

13 SECTION 15 TOWN 07 RANGE

ADAMS COUNTY

COUNTY CORNER NO: 73
 ROMPORTOL ID: 41507130000

PUBLIC LAND SURVEY MONUMENT RECORD

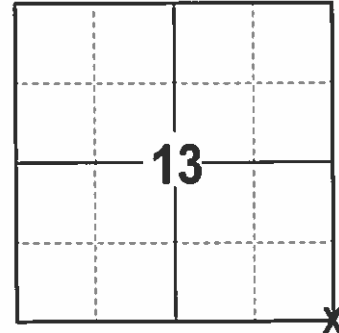
TYPE OF MONUMENT: HARRISON
 ADAMS COUNTY COORDINATES, NAD 83 (2007)

N. 148759.363

E. 588944.908

ELEVATION- DATUM

FIELD WORK DATE: 2/1/2017



LOCATION
 (INDICATE CORNER BY "X")

SEAL:

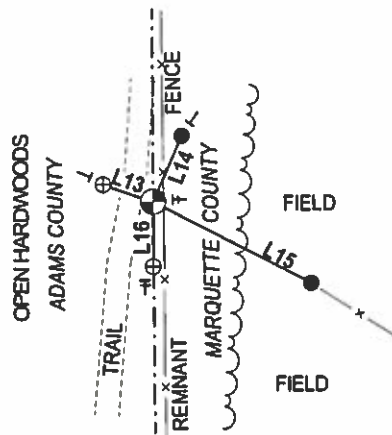


DATA SHOWN HERE ON THIS TIE SHEET IS CORRECT AND COMPLETE TO THE BEST OF MY KNOWLEDGE AND BELIEF.

PROFESSIONAL LAND SURVEYOR

DATE 3/7/17

TIE SKETCH



- 3/4" x 18" IRON REBAR SET, 1.50#/FT
- ⊕ FOUND 2-3/8" OD IRON PIPE
- ⊕ FOUND HARRISON
- VINYL "T" POST
- STEEL "T" POST

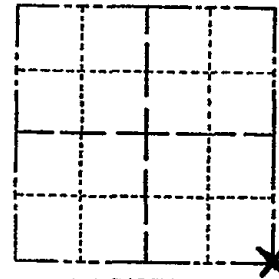
LINE	BEARING	DISTANCE
L13	N 70°57'24" W	13.85'
L14	N 23°51'26" E	18.75'
L15	S 62°52'15" E	46.29'
L16	S 00°04'18" W	16.81'

ADAMS COUNTY

Survey Monument Record

TYPE OF MONUMENT: HARRISON
STATE PLANE COORDINATES: N _____
E _____
ELEVATION — M.S.L. DATUM: _____
THETA ANGLE: _____
FIELD BOOK: Clip sheets PAGE _____

CORNER NO. 352
SECTION 13
TOWN 15N
RANGE 7E



LOCATION
(Indicated by 'X')

SEAL:

BASIS FOR MONUMENT LOCATION

(Use reverse side if necessary)

Show info such as: History of corner, with reference to Vol. and pg, dates, surveyor; exact description of monument replaced; if location computed, by taped or EDM traverse; landowner remarks, etc.

Location determined by computed coordinates from an extensive traverse connecting all of Sections 12-13. Existing fence corner. Probed--no other evidence found.

CORNER O.K. 10-28-76 R.N-55
" " 5-8-91 JG-55
" " 4-3-96 JG-55
ALL OK, 3-27-06 - GPR
OK 12-21-11 MS



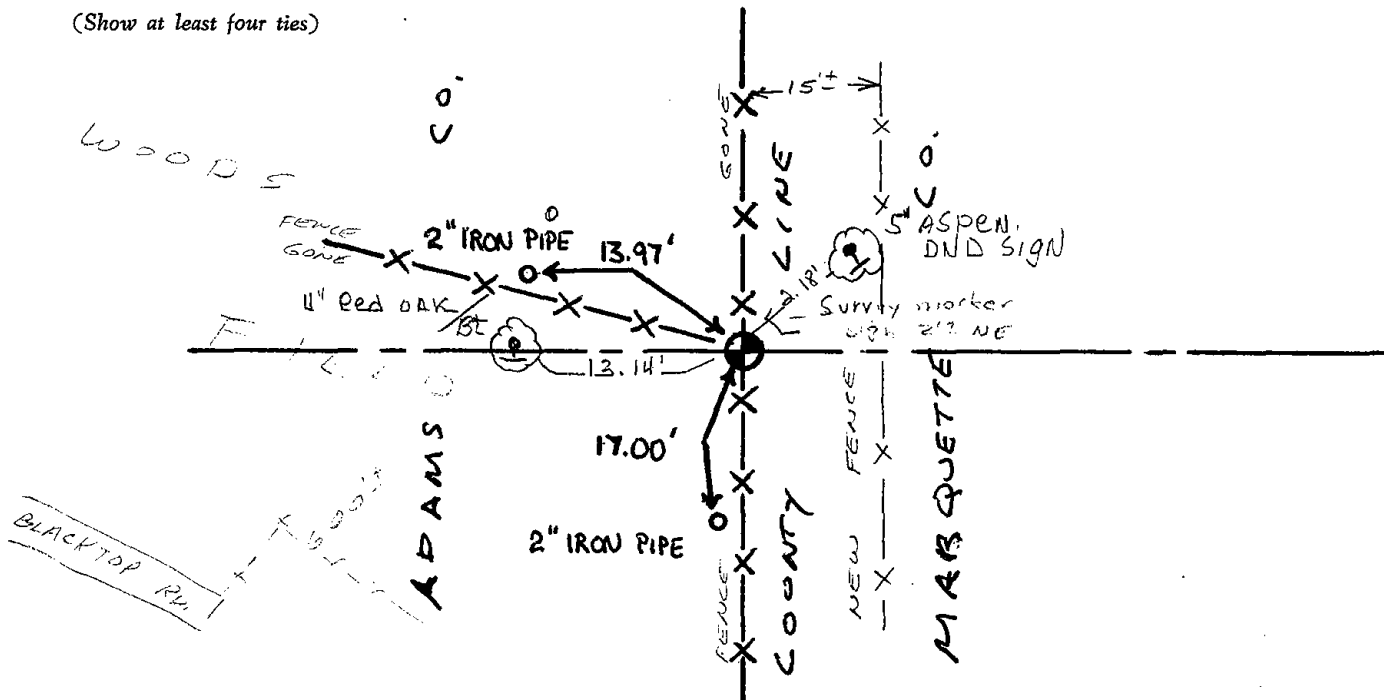
CERTIFIED CORRECT:

R. K. Saylor
Registered Land Surveyor

DATE: 1/15/74

TIE SKETCH

(Show at least four ties)



MAINTENANCE RECORD

Date	Int.	Remarks
12-30-81	TH-NJ	Mon + Tues O.K.
3-27-86	GR-SS	" "