

24 SECTION 15 TOWN 06 RANGE

ADAMS COUNTY

COUNTY CORNER NO: 80
 ROMPORTOL ID: 41506242000

PUBLIC LAND SURVEY MONUMENT RECORD

TYPE OF MONUMENT: HARRISON
 ADAMS COUNTY COORDINATES, NAD 83 (2007)

N. 146125.113
 E. 557720.527

ELEVATION- DATUM

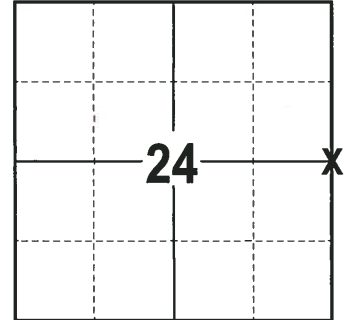
FIELD WORK DATE: 09/19/2017

BASIS FOR MONUMENT LOCATION

1976 - PLS 878 EXCAVATED WITH A BACKHOE AND FOUND STONE OF RECORD. THE STONE WAS A 8"X10"X20" RED GRANITE STONE CALLED FOR BY BARRETT IN VOL 1, PAGE 8 OF THE COUNTY SURVEY RECORDS. LOWERED STONE AND SET HARRISON ON TOP AND RE-TIED. (NOTE: THIS CORNER WAS PREVIOUSLY SET BY SAM MULLEN. THE HARRISON HE HAD SET WAS REMOVED. SEE OLD TIE SHEET.)

1999 - PLS 1397 EXISTING MONUMENT WAS FOUND IN PLACE. MONUMENT WAS REMOVED AND RAISED DUE TO RECONSTRUCTION OF C.T.H. B. CORNER WAS RE-TIED.

2017 - PLS 2994 FOUND A HARRISON MONUMENT 4" BELOW THE ROAD SURFACE AND 2 PROPERTY IRONS THAT WERE ADDED AS TIES TO PRIOR TIE SHEET. THE MONUMENT AGREES WITH THE EXISTING PROPERTY IRON TIES. ACCEPTED THE HARRISON MONUMENT AS THE CORNER LOCATION. SET 2 NEW TIES AND RE-MEASURED THE TIES AND PROPERTY IRONS.



LOCATION
 (INDICATE CORNER BY "X")

SEAL:



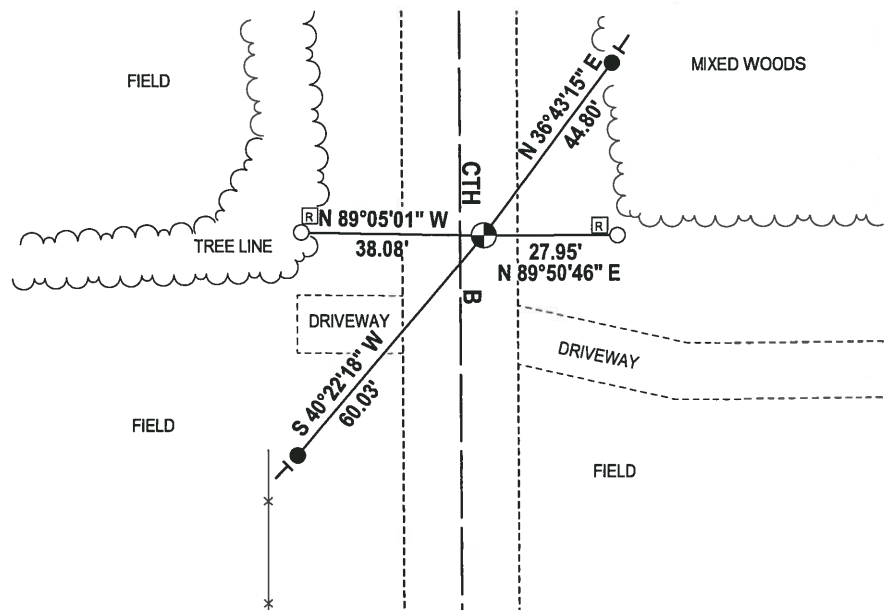
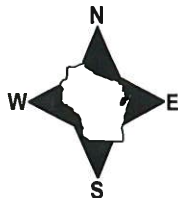
DATA SHOWN HERE ON THIS TIE SHEET IS CORRECT AND COMPLETE TO THE BEST OF MY KNOWLEDGE AND BELIEF.

PROFESSIONAL LAND SURVEYOR

DATE 11-15-17

- TIE SKETCH -

NOTE: THE CORNER FALLS 5± EAST OF THE CENTERLINE OF CTH B.



- 3/4" x 18" IRON REBAR SET, 1.50#/FT
- 3/4" IRON ROD FOUND
- ⊙ HARRISON FOUND
- ⊠ WITNESS RWGP
- ⊣ VINYL "T" POST

ADAMS COUNTY

Survey Monument Record

TYPE OF MONUMENT: 30" HARRISON MARKER

STATE PLANE COORDINATES: N _____

E _____

ELEVATION — M.S.L. DATUM: _____

THETA ANGLE: _____

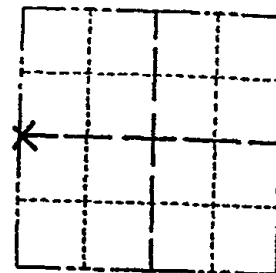
FIELD BOOK: _____ PAGE _____

CORNER NO. 110

SECTION 19

TOWN 15N

RANGE 7E



LOCATION
(Indicated by 'X')

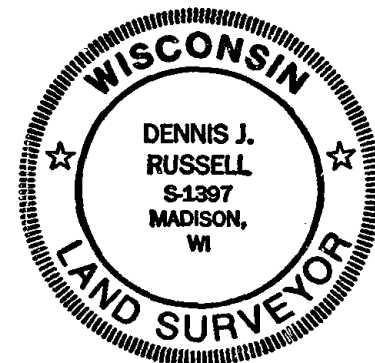
SEAL:

BASIS FOR MONUMENT LOCATION

(Use reverse side if necessary)

Show info such as: History of corner, with reference to Vol. and pg, dates, surveyor; exact description of monument replaced; if location computed, by taped or EDM traverse; landowner remarks, etc.

Existing Monument was found in place. Monument was removed and raised due to reconstruction of C.T.H. "B". All tie measurements are horizontal measurements unless noted otherwise.



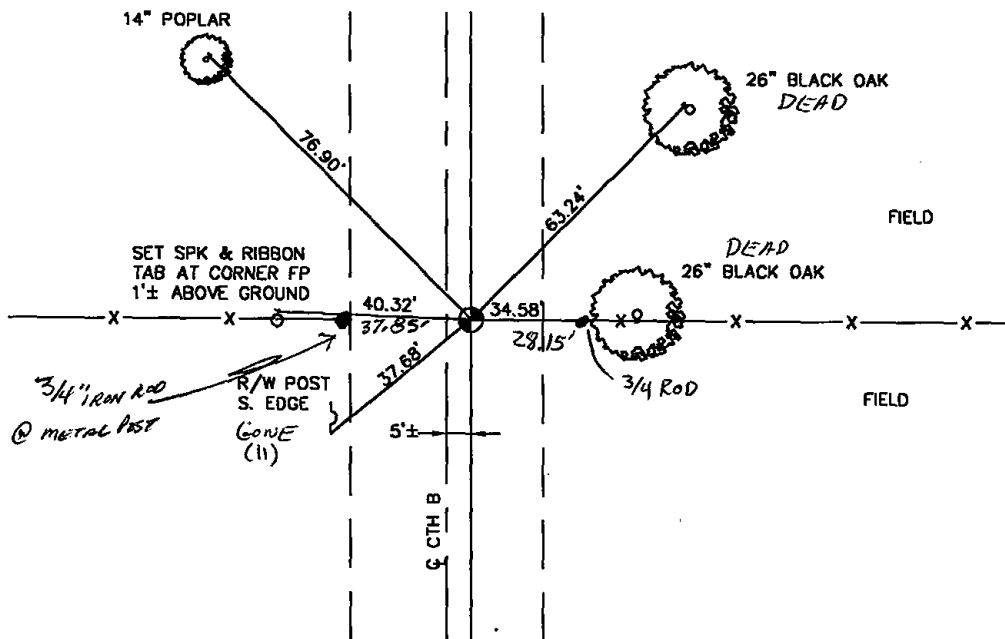
OK, 1-NEWTIE, 3-1-06, - JG
1 GONE, 1 NEW 12-22-11 MS

CERTIFIED CORRECT
Dennis J. Russell
Registered Land Surveyor
DATE: July 26, 1999

TIE SKETCH

(Show at least four ties)

ALL MEASUREMENTS ARE HORIZONTAL.

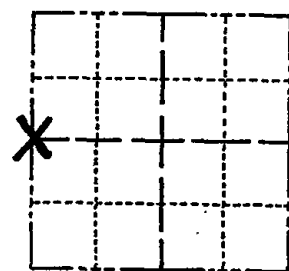


ADAMS COUNTY

Survey Monument Record

TYPE OF MONUMENT: Harrison standard
STATE PLANE COORDINATES: N _____
E _____
ELEVATION — M.S.L. DATUM: _____
THE TA ANGLE: _____
FIELD BOOK: 41 PAGE 17

CORNER NO. 110
SECTION 19
TOWN 15
RANGE 7



LOCATION
(Indicated by 'X')

SEAL:

BASIS FOR MONUMENT LOCATION

(Use reverse side if necessary)

Show info such as: History of corner, with reference to Vol. and pg, dates, surveyor; exact description of monument replaced; if location computed, by taped or EDM traverse; landowner remarks, etc.

Excavated with backhoe. Found stone of record. Lowered stone and set Harrison on top.

Note: This corner was previously set by Sam Mullen. The Harrison he had set was removed. See tie sheet (old).

Stone found was 8'x10'x20' red granite. Called for by Barrett, Vol 1, page 8, County Survey records.



CERTIFIED CORRECT:

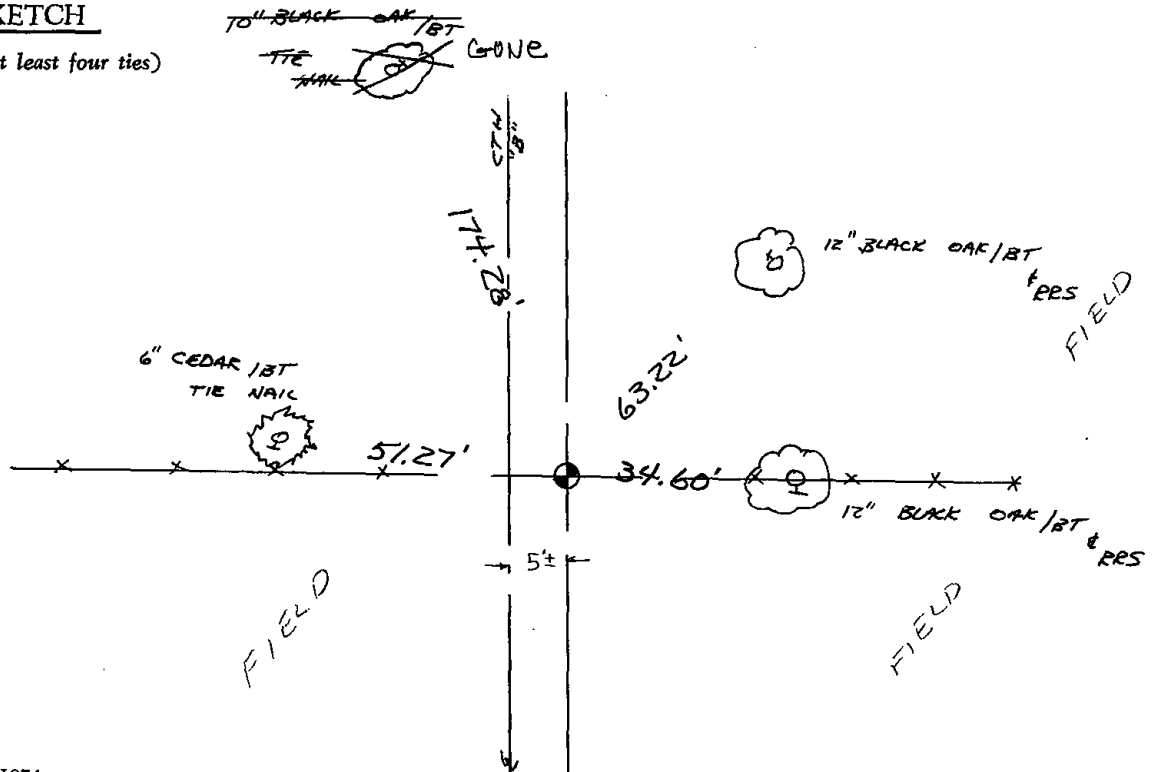
Anthony B. Kiedrowski
Registered Land Surveyor

DATE: May 17, 1976

CORNER O.K. 4-23-76 RM-SS
" " 2-3-86 GR-SS
ALL OK 1-31-91 KE-JG
" " 11-29-95 SS
OK 2-16-01 JG SEE ATTACHED SHEET DTD 7/26/99

TIE SKETCH

(Show at least four ties)



MAINTENANCE RECORD

Date	Init.	Remarks
10-12-81	RC-JH	Ment & Jaws o.k.
11-29-95	SS	OK