

19
SECTION

15
TOWN

07
RANGE

ADAMS COUNTY

COUNTY CORNER NO: 75

ROMPORTOL ID: 41507192000

PUBLIC LAND SURVEY MONUMENT RECORD

TYPE OF MONUMENT: HARRISON (BROKEN-TOP)
ADAMS COUNTY COORDINATES, NAD 83 (2007)

N. 146130.400

E. 562638.481

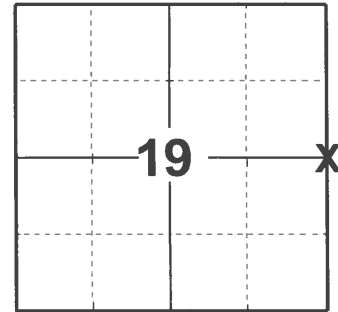
ELEVATION- _____ DATUM _____

FIELD WORK DATE: 04/07/2021

BASIS FOR MONUMENT LOCATION

1976 - PLS 1103 TRAVERSED AROUND SECTIONS 18 AND 19 TO DETERMINE SEARCH AREAS. FOUND NO EVIDENCE OF THE CORNER. SET CORNER BY DOUBLING OVER DISTANCE AND BEARING FROM SOUTHEAST CORNER OF THIS SECTION TO IRON PIPE SET BY M.C. SMITH ON MAY 7, 1919 (VOLUME 2, PAGE 59 OF ADAMS COUNTY SURVEY RECORDS) AT THE SOUTHEAST CORNER OF THE NORTHEAST QUARTER OF THE SOUTHEAST QUARTER OF SECTION 19.

2021 - PLS 2675 FOUND HARRISON (BROKEN-TOP) MONUMENT 8" BELOW GROUND SURFACE. DID NOT RECOVER ANY EXISTING TIES OR WITNESSES. ACCEPTED HARRISON (BROKEN -TOP) MONUMENT AS THE CORNER LOCATION AND SET 4 NEW TIES.



LOCATION
(INDICATE CORNER BY "X")

SEAL:



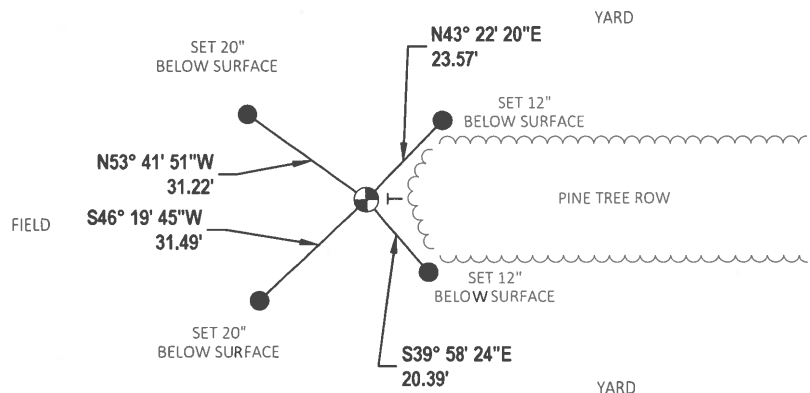
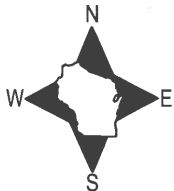
DATA SHOWN HERE ON THIS TIE SHEET IS CORRECT AND COMPLETE TO THE BEST OF MY KNOWLEDGE AND BELIEF.

PROFESSIONAL LAND SURVEYOR

DATE 5/19/21

- TIE SKETCH

NOTE: CORNER LANDS 220'± WEST OF 5TH LANE.



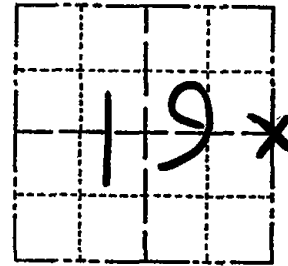
- SET 3/4" x 18" IRON REBAR, 1.50#/FT
- ⊕ FOUND HARRISON (BROKEN-TOP) MONUMENT
- VINYL "T" POST

ADAMS COUNTY

Survey Monument Record

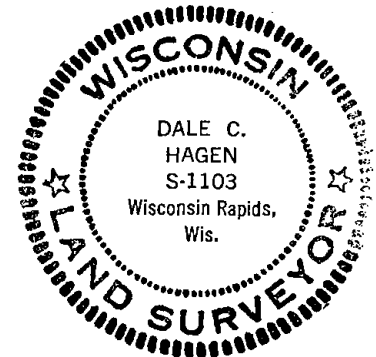
TYPE OF MONUMENT: Harrison
STATE PLANE COORDINATES: N _____
E _____
ELEVATION — M.S.L. DATUM: _____
THETA ANGLE: _____
FIELD BOOK: _____ PAGE _____

CORNER NO. 1055
SECTION 19
TOWN 15
RANGE 7



LOCATION
(Indicated by 'X')

SEAL:



BASIS FOR MONUMENT LOCATION

(Use reverse side if necessary)

Show info such as: History of corner, with reference to Vol. and pg, dates, surveyor; exact description of monument replaced; if location computed, by taped or EDM traverse; landowner remarks, etc.

Traversed around Sections 18 and 19 using T-2 and EDM to determine search areas for investigation.

Could find no evidence of the original corner or any remonumentation.

Set corner by doubling over distance and bearing from Southeast corner of this section to iron pipe set by M.C. Smith on May 7, 1919 (See Volume 2, Page 59 of Adams County Survey Records) at the Southeast corner of the Northeast Quarter of the Southeast Quarter of Section 19.

Harrison Monument Set May 27, 1976.

CERTIFIED CORRECT:

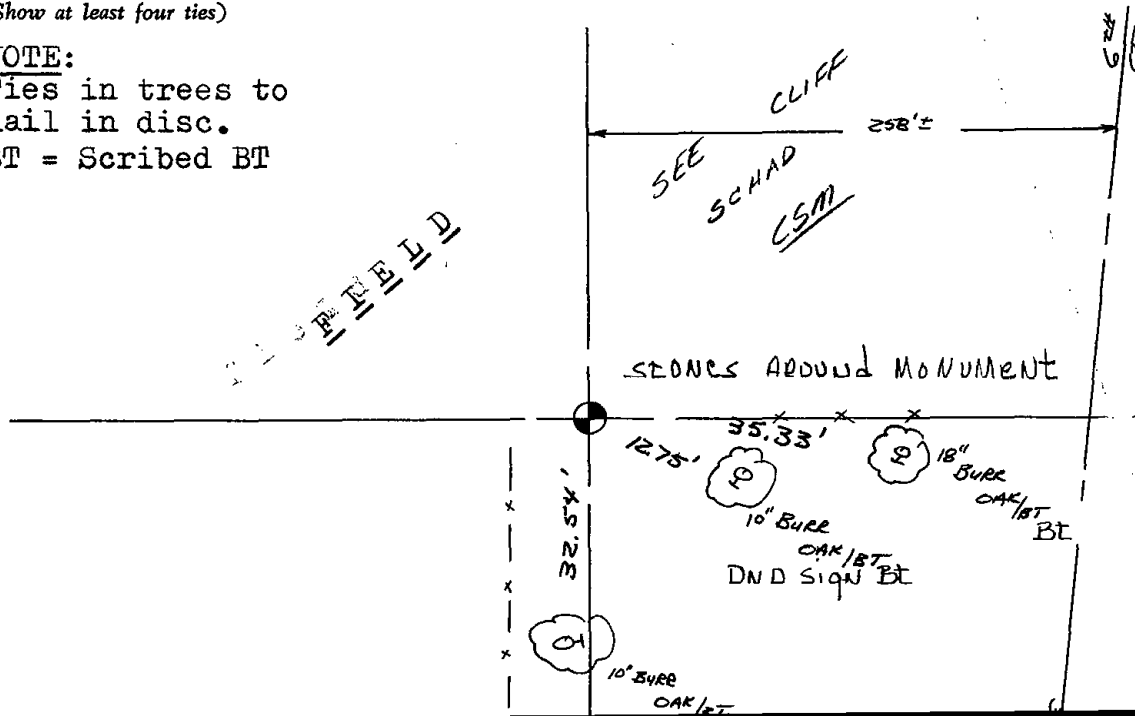
Dale C. Hagen
Registered Land Surveyor
DATE: July 21, 1976

TIE SKETCH

(Show at least four ties)

NOTE:

Ties in trees to nail in disc.
BT = Scribed BT



MAINTENANCE RECORD

Date	Init.	Remarks
12-29-81	TH NJ	O.K.
2-3-86	AR-55	OK
6-7-91	JG-53	OK
5-11-96	SS	TIES OK
8-16-01	JG	OK
12-21-11	MS	OK

ADAMS COUNTY

Survey Monument Record

TYPE OF MONUMENT: Harrison

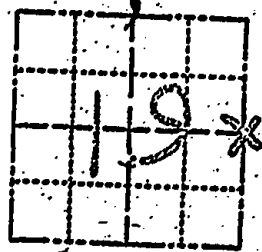
STATE PLANE COORDINATES: N _____
E _____

ELEVATION -- M.S.L. DATUM: _____

THETA ANGLE: _____

FIELD BOOK: _____ PAGE _____

CORNER NO. 1655
SECTION 19
TOWN 15
RANGE 7



LOCATION
(Indicated by 'X')

BASIS FOR MONUMENT LOCATION

(Use reverse side if necessary)

Show info such as: History of corner, with reference to Vol. and pg. dates, surveyor; exact description of monument replaced; if location computed, by taped or EDM traverse; landowner remarks, etc.

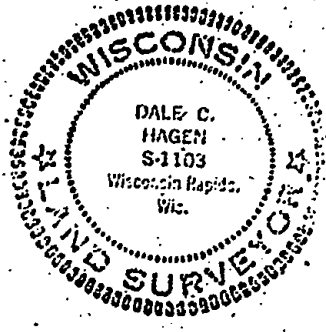
Traversed around Sections 18 and 19 using T-2 and EDM to determine search areas for investigation.

Could find no evidence of the original corner or any re-monumentation.

Set corner by doubling over distance and bearing from Southeast corner of this section to iron pipe set by M.C. Smith on May 7, 1919. (See Volume 2, Page 59 of Adams County Survey Records) at the Southeast corner of the Northeast quarter of the Southeast quarter of Section 19.

Harrison Monument Set May 27, 1976.

SEAL:



CERTIFIED CORRECT:

Dale C. Hagen
Registered Land Surveyor

DATE: July 21, 1976

Apr 13 87 Ken Carlson

TIE SKETCH

(Show at least four ties)

NOTE:
Ties in trees to nail in disc.
BT = Scribed BT

