

PUBLIC LAND SURVEY MONUMENT RECORD

TYPE OF MONUMENT: HARRISON
 ADAMS COUNTY COORDINATES, NAD 83 (2007)

N. 143521.418
 E. 583632.121

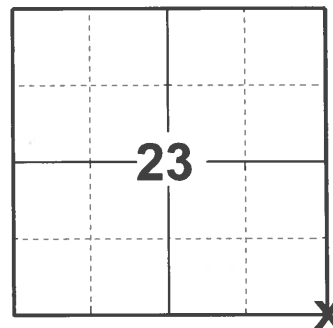
ELEVATION- _____ DATUM _____

FIELD WORK DATE: 04/01/2021

BASIS FOR MONUMENT LOCATION

1973 - PLS 878 FOUND 3/4" X 24" IRON ROD. MONUMENTED SAME. MONUMENT AGREES WITH TRAVERSE RUN OF SECTION 23.

2021 - PLS 2675 FOUND HARRISON MONUMENT FLUSH WITH THE ROAD SURFACE AND 1 WITNESS. THE MONUMENT AGREES WITH WITNESS. ACCEPTED THE HARRISON MONUMENT AS THE CORNER LOCATION. SET 4 NEW TIES AND MEASURED TO THE EXISTING WITNESS.



LOCATION

(INDICATE CORNER BY "X")

SEAL:



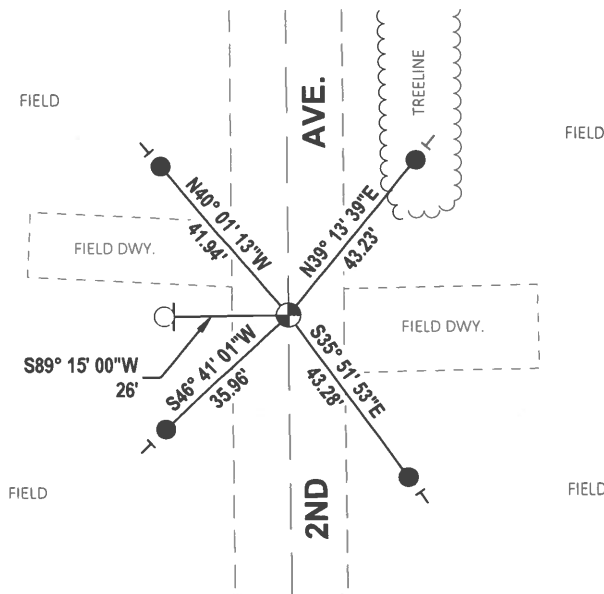
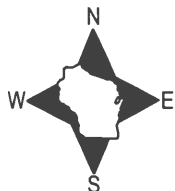
DATA SHOWN HERE ON THIS TIE SHEET IS CORRECT AND COMPLETE TO THE BEST OF MY KNOWLEDGE AND BELIEF.

PROFESSIONAL LAND SURVEYOR

DATE 5/19/21

- TIE SKETCH

NOTE: CORNER LANDS ON THE CENTERLINE OF 2ND AVE.



- SET 3/4" x 18" IRON REBAR, 1.50#/FT
- FOUND NAIL AND WASHER IN FENCE POST
- ⊙ FOUND HARRISON MONUMENT
- ┊ VINYL "T" POST

ADAMS COUNTY

Survey Monument Record Set Harrison 5-7-75

TYPE OF MONUMENT: RIP SPIKE

STATE PLANE COORDINATES: N _____ E _____

ELEVATION - C.M.S.L. DATUM: _____

THETA ANGLE: _____

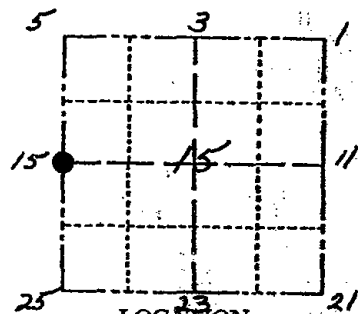
FIELD BOOK: 454 PAGE 70

CORNER NO. 601

SECTION 23

TOWN 15 N

RANGE 7 E



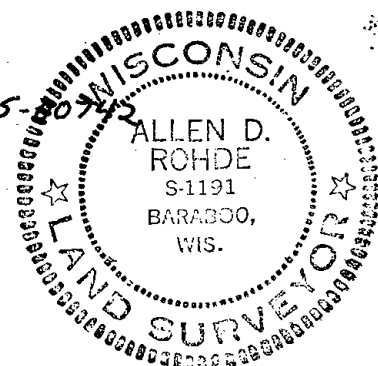
SEAL:

BASIS FOR MONUMENT LOCATION

(Use reverse side if necessary)

Show info such as: History of corner, with reference to Vol. and pg. dates, surveyor, exact description of monument replaced; if location computed, by taped or EDM traverse; landowner remarks, etc.

*Fd Existing Nail w/bottle
CAP 2" below pavement
Corner Established Feb 11 1966 by Ken Carlson
Re P. Chuck Connell Survey
Proj. No. 1871 F.B. 336 P. 23
File No. 22-68-5*



MAINTENANCE RECORD

Date	Init.	Remarks
12-30-81	TH-NJ	TIES O.K
9-10-85		KEN CARLSON
2-3-86	GR-SS	OK
10-12-91	JG-CR	OK
4-3-96	JG-SS	OK
8-5-01	MH-JB	ALL OK

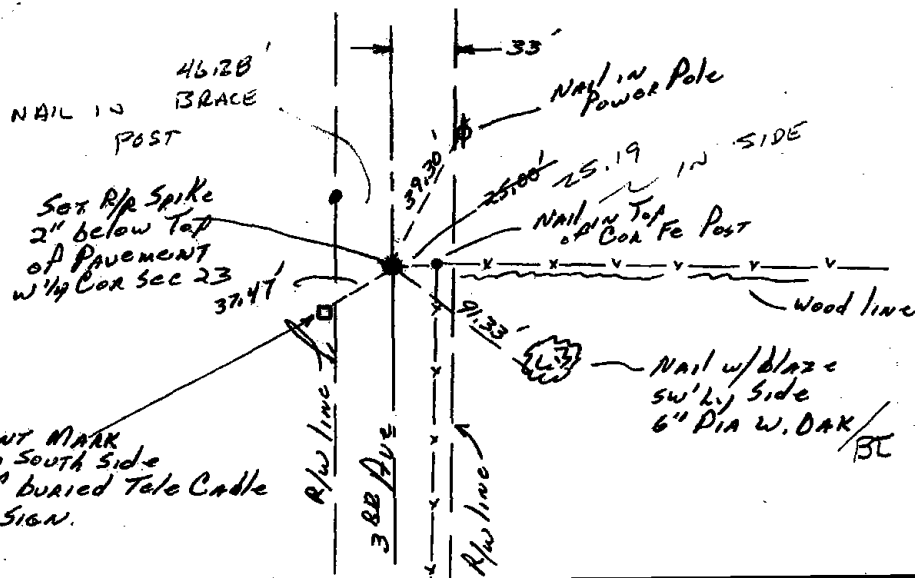
CERTIFIED CORRECT

Allen D. Rohde
Registered Land Surveyor

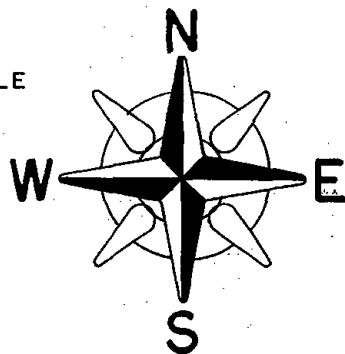
DATE: 1-6-75

TIE SKETCH 8-7-06-JG-OK

(Show at least four ties)



NO SCALE



SURVEYOR'S NOTE: This corner will be monumented with a Harrison Marker in the Spring of 1975.