

24 SECTION 15 TOWN 06 RANGE

ADAMS COUNTY

COUNTY CORNER NO: 93
ROMPORTOL ID: 41506240000

PUBLIC LAND SURVEY MONUMENT RECORD

TYPE OF MONUMENT: HARRISON
ADAMS COUNTY COORDINATES, NAD 83 (2007)

N. 143481.507

E. 557713.077

ELEVATION- DATUM

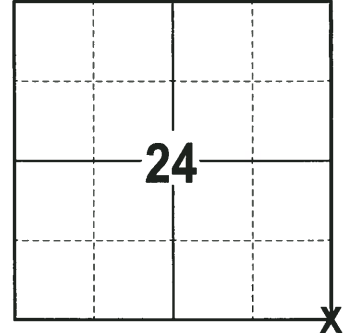
FIELD WORK DATE: 09/18/2017

BASIS FOR MONUMENT LOCATION

1976 - PLS 878 EXCAVATED WITH A BACKHOE AND FOUND A 10"X10"X16" SQUARE SANDSTONE. LOWERED THE STONE AND SET A HARRISON MONUMENT ON TOP. WITNESSED BY ADJACENT LANDOWNER MIOTKE, WHO LIVES IN THE NORTHWEST QUADRANT OF THE INTERSECTION. HE SAID HE KNEW OF A STONE BEING THERE. STONE CALLED FOR BY BARRETT PER VOL 1, PAGE 8, COUNTY SURVEYOR RECORDS. THIS POINT HAD BEEN MONUMENTED BY SAM MULLEN WITHOUT SEARCHING FOR THE STONE. REMOVED HIS MONUMENT AND TIED OUT.

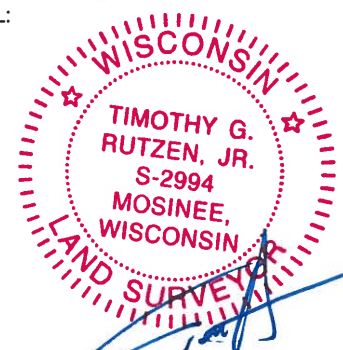
1999 - PLS 1397 EXISTING MONUMENT WAS FOUND AT THE CORNER LOCATION. MONUMENT WAS REMOVED AND RAISED DUE TO RECONSTRUCTION OF C.T.H. B. CORNER WAS RE-TIED.

2017 - PLS 2994 FOUND A HARRISON MONUMENT 6" BELOW THE ROAD SURFACE AND 1 WITNESS. THE MONUMENT AGREES WITH THE EXISTING WITNESS. ACCEPTED THE HARRISON MONUMENT AS THE CORNER LOCATION. SET 4 NEW TIES AND MEASURED THE TIES AND WITNESS.



LOCATION
(INDICATE CORNER BY "X")

SEAL:



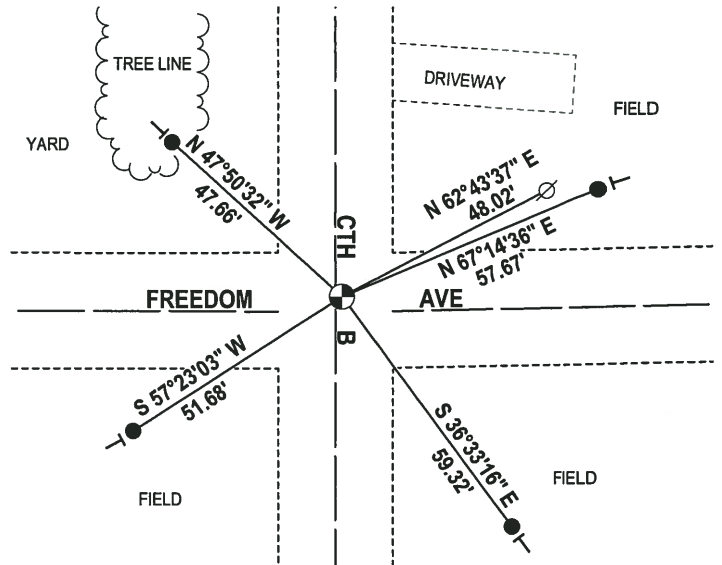
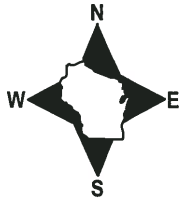
DATA SHOWN HERE ON THIS TIE SHEET IS CORRECT AND COMPLETE TO THE BEST OF MY KNOWLEDGE AND BELIEF.

PROFESSIONAL LAND SURVEYOR

DATE 11-15-17

TIE SKETCH

NOTE: THE CORNER FALLS 1± EAST OF THE CENTERLINE OF CTH B AND 3± NORTH OF THE CENTERLINE OF FREEDOM AVE.



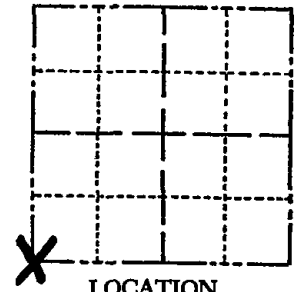
- 3/4" x 18" IRON REBAR SET, 1.50#/FT
- ⊙ HARRISON FOUND
- ⊗ WITNESS POWER POLE
- ┌ VINYL "T" POST

ADAMS COUNTY

Survey Monument Record

TYPE OF MONUMENT: Harrison standard
STATE PLANE COORDINATES: N _____
E _____
ELEVATION — M.S.L. DATUM: _____
THETA ANGLE: _____
FIELD BOOK: 41 PAGE 17

CORNER NO. 111 (81)
SECTION 19
TOWN 15
RANGE 7



LOCATION
(Indicated by 'X')

SEAL:



BASIS FOR MONUMENT LOCATION

(Use reverse side if necessary)

Show info such as: History of corner, with reference to Vol. and pg, dates, surveyor; exact description of monument replaced; if location computed, by taped or EDM traverse; landowner remarks, etc.

Excavated with backhoe. Found 10'x10'x16' square white sandstone. Lowered stone and set Harrison on top.
Witnessed by adjacent landowner Miotke, who lives in the northwest quadrant of the intersection. He said he knew of stone being there. Stone called for by Barrett per Vol 1, page 8, County Surveyor records.

This point had been monumented by Sam Mullen without searching for the stone. Removed his monument at this time.

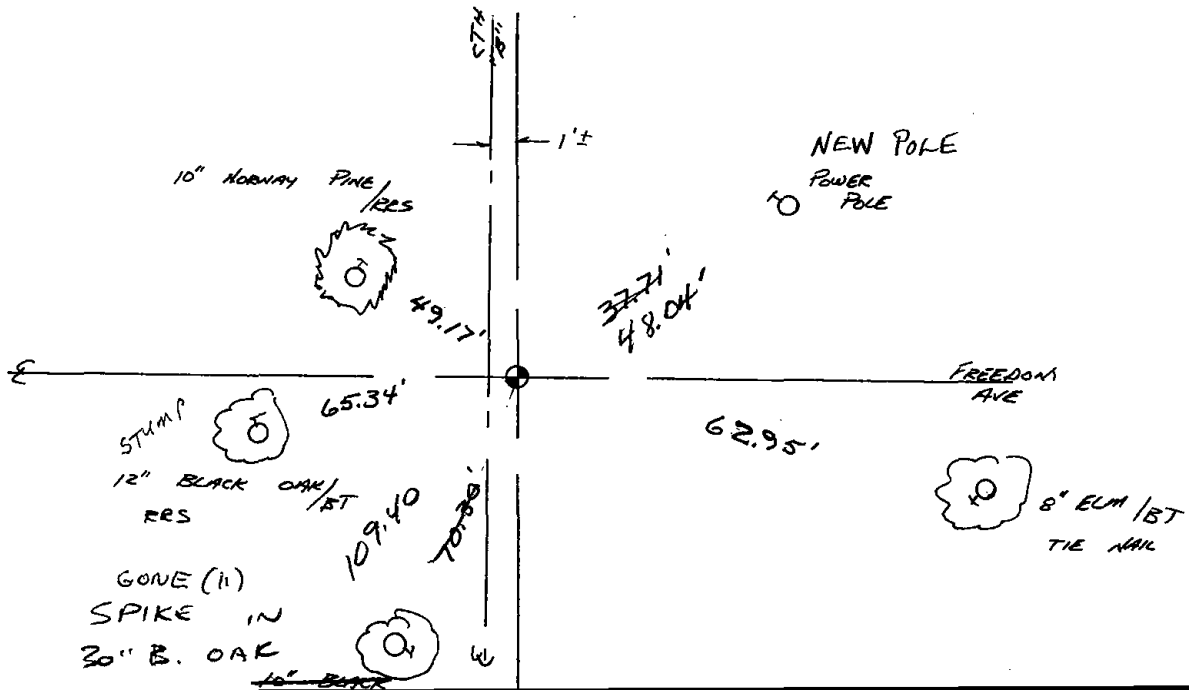
CORNER O.K. - 1976
10-22-85 KEV CARLSON
2-3-86 OK GR-50
1-GONE, 1-NEW 1-31-91 KE-JG
1-GONE 12-22-11 MS

CERTIFIED CORRECT:

Anthony B. Kiedrowski
Registered Land Surveyor
DATE: 5/9/76

TIE SKETCH

(Show at least four ties)



MAINTENANCE RECORD

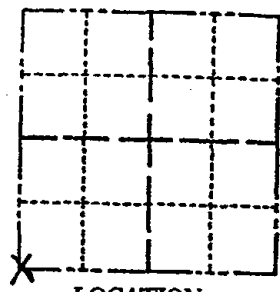
Date	Init.	Remarks
10-12-81	TH-LC	MONÉ-Ties O.K
11-29-95	SS	OK

ADAMS COUNTY

Survey Monument Record

TYPE OF MONUMENT: 30" HARRISON MARKER
 STATE PLANE COORDINATES: N _____
 E _____
 ELEVATION — M.S.L. DATUM: _____
 THETA ANGLE: _____
 FIELD BOOK: _____ PAGE _____

CORNER NO. 111
 SECTION 19
 TOWN 15N
 RANGE 7E



LOCATION
(Indicated by 'X')

SEAL:

BASIS FOR MONUMENT LOCATION

(Use reverse side if necessary)

Show info such as: History of corner, with reference to Vol. and pg. dates, surveyor; exact description of monument replaced; if location computed, by taped or EDM traverse; landowner remarks, etc.

Existing Monument was found in place. Monument was removed and raised due to reconstruction of C.T.H. "B". All tie measurements are horizontal measurements unless noted otherwise.

ALL OK 2-16-01 - JG
OK, 3-1-06 - JG



CERTIFIED CORRECT:
Dennis J. Russell
 Registered Land Surveyor
 DATE: *July 26, 1999*

TIE SKETCH

(Show at least four ties)

ALL MEASUREMENTS ARE HORIZONTAL.

