

21
SECTION

15
TOWN

07
RANGE

ADAMS COUNTY

COUNTY CORNER NO: 86

ROMPORTOL ID: 41507210020

PUBLIC LAND SURVEY MONUMENT RECORD

TYPE OF MONUMENT: HARRISON
ADAMS COUNTY COORDINATES, NAD 83 (2007)

N. 143488.396

E. 570505.069

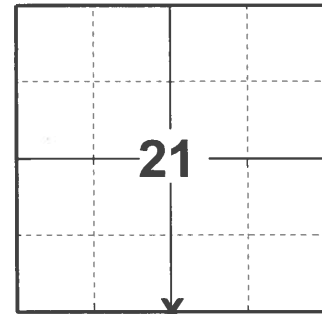
ELEVATION- _____ DATUM _____

FIELD WORK DATE: 04/06/2021

BASIS FOR MONUMENT LOCATION

1978 - PLS 1267 FOUND M.C. SMITH BEARING TREE AS NOTED IN VOLUME 6 PAGE 78 ADAMS COUNTY SURVEY RECORDS. RE-SET CORNER FROM RECORD TIES. FIT EDM TRAVERSE OF SECTION GOOD.

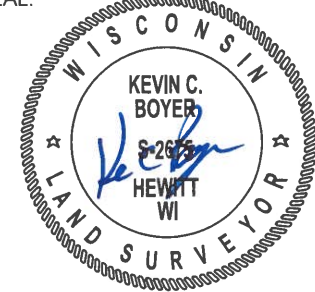
2021 - PLS 2675 FOUND HARRISON MONUMENT 4" ABOVE GROUND SURFACE. DID NOT RECOVER ANY EXISTING TIES OR WITNESSES. ACCEPTED HARRISON MONUMENT AS THE CORNER LOCATION AND SET 4 NEW TIES.



LOCATION

(INDICATE CORNER BY "X")

SEAL:



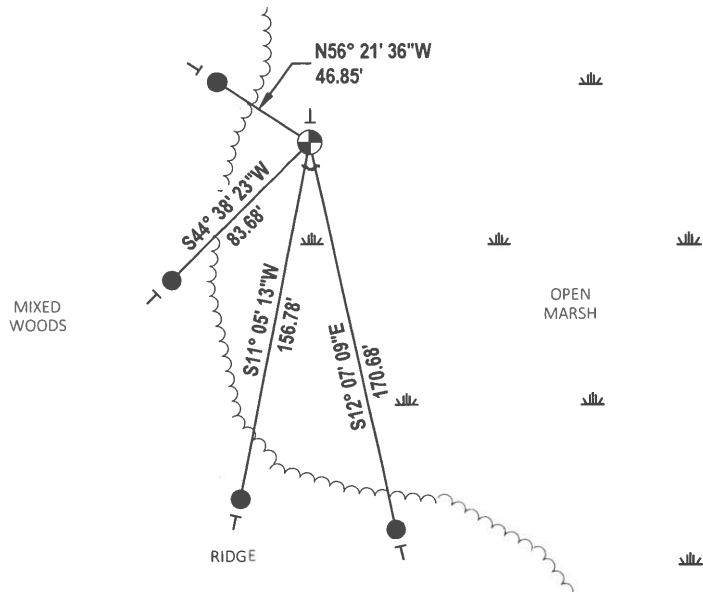
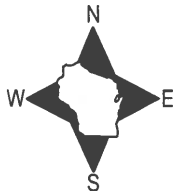
DATA SHOWN HERE ON THIS TIE SHEET IS CORRECT AND COMPLETE TO THE BEST OF MY KNOWLEDGE AND BELIEF.

PROFESSIONAL LAND SURVEYOR

DATE 5/19/21

- TIE SKETCH -

NOTE: CORNER LANDS 32'± INTO MARSH.

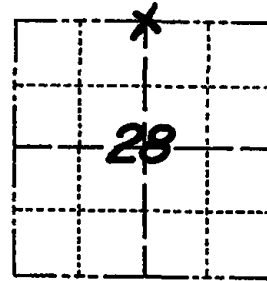


- SET 3/4" x 18" IRON REBAR, 1.50#/FT
- ⊕ FOUND HARRISON MONUMENT
- VINYL "T" POST
- ~ STEEL FENCE POST

Government Land Corner Certificate

ADAMS County
 TYPE OF MONUMENT: HARRISON
 STATE PLANE COORDINATES: N _____
 E _____
 ELEVATION — M.S.L. DATUM: _____
 THETA ANGLE: _____
 FIELD BOOK: _____ PAGE _____
 DRAWN BY: _____

CORNER NO. 86
 SECTION 28
 TOWN 15N
 RANGE 7E



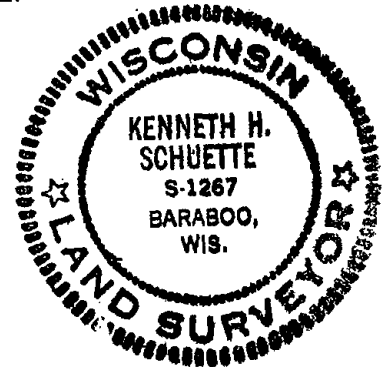
LOCATION
 (Indicated by 'X')

BASIS FOR MONUMENT LOCATION

Show info such as: History of corner, with reference to Vol. and pg., dates, surveyor; exact description of monument replaced; if location computed, by taped or EDM traverse; landowner remarks, etc. (Use reverse side if necessary)

FOUND M.C. SMITH BEARING TREE AS NOTED IN VOLUME 6 ON PAGE 78 ADAMS COUNTY SURVEY RECORDS. RE-SET CORNER FROM RECORD TIES. FIT EDM TRAVERSE OF SECTION GOOD.

SEAL:



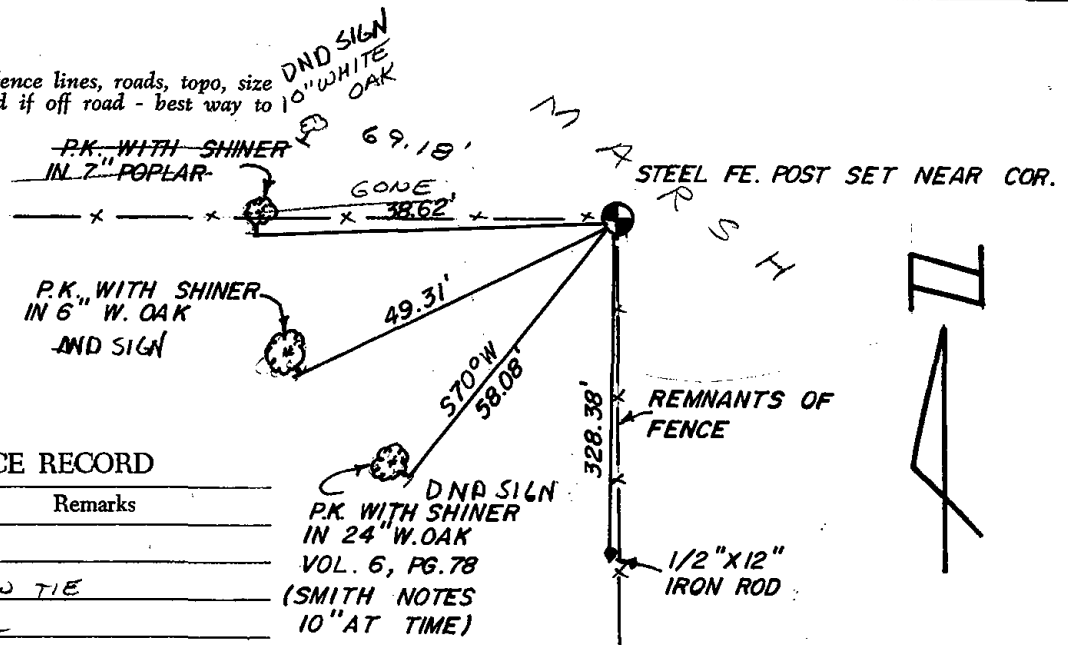
DATA SHOWN HERE ON
 CERTIFIED CORRECT:

Kenneth H. Schuette
 Registered Land Surveyor

DATE: 1 Aug 1978

TIE SKETCH

Show at least four ties, also fence lines, roads, topo, size and type of witness trees' and if off road - best way to arrive at corner.



MAINTENANCE RECORD

Date	Init.	Remarks
12-29-81	TH-NJ	OK
3-21-86	D.V.-SS.	1 NEW TIE
8-28-91	SS-JG	OK
3-3-95	MC	OK
5-14-96	SS	"
2-21-01	ML-JG	ALL OK
8-8-06	JG	OK

DNA SILN
 PK WITH SHINER
 IN 24" W. OAK
 VOL. 6, PG. 78
 (SMITH NOTES
 10" AT TIME)