

22  
SECTION

15  
TOWN

07  
RANGE

# ADAMS COUNTY

COUNTY CORNER NO: 89

ROMPORTOL ID: 41507220000

## PUBLIC LAND SURVEY MONUMENT RECORD

TYPE OF MONUMENT: 2" ANGLE IRON  
ADAMS COUNTY COORDINATES, NAD 83 (2007)

N. 143506.838

E. 578329.523

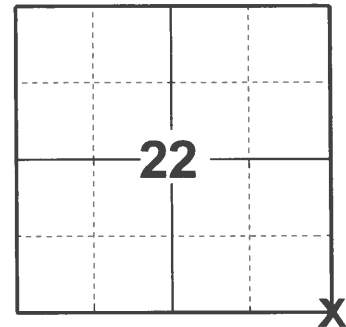
ELEVATION- \_\_\_\_\_ DATUM \_\_\_\_\_

FIELD WORK DATE: 04/05/2021

### BASIS FOR MONUMENT LOCATION

1973 - PLS 878 FOUND 2" ANGLE IRON THAT LANDOWNER POINTED OUT AS BEING THE SECTION CORNER. OTHER POSTS WERE WOOD. A TRAVERSE OF ENTIRE SECTION WAS COMPLETED AND CONFIRMED THE LOCATION OF THE CORNER WAS CORRECT.

2021 - PLS 2675 FOUND 2" ANGLE IRON 6" BELOW GROUND SURFACE AND 1 WITNESS. THE CORNER AGREES WITH THE WITNESS AND SECTION SUMMARY DISTANCES FROM THE S1/4 AND E1/4 TO THE SOUTHEAST CORNER. ACCEPTED THE 2" ANGLE IRON AS THE CORNER LOCATION. SET 4 NEW TIES AND MEASURED TO THE EXISTING WITNESS.



LOCATION

(INDICATE CORNER BY "X")

SEAL:



DATA SHOWN HERE ON THIS TIE SHEET IS CORRECT AND COMPLETE TO THE BEST OF MY KNOWLEDGE AND BELIEF.

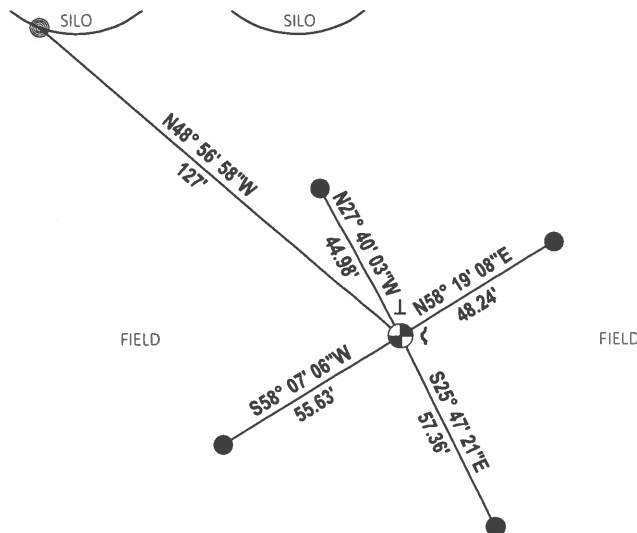
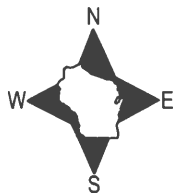
PROFESSIONAL LAND SURVEYOR

DATE 5/19/21

### TIE SKETCH

NOTE1: 1-1/4" OD IRON PIPE .59' NORTHEAST OF CORNER LOCATION.

NOTE 2: ALL TIES ARE 24" BELOW GROUND SURFACE.



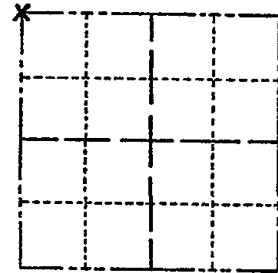
- SET 3/4" x 18" IRON REBAR, 1.50#/FT
- ⊕ FOUND 2" ANGLE IRON
- ↘ STEEL FENCE POST
- VINYL "T" POST

# ADAMS COUNTY

## Survey Monument Record

CORNER NO. 238  
 SECTION 26  
 TOWN 15  
 RANGE 7

TYPE OF MONUMENT: 4 1/2" ANGLE IRON  
 STATE PLANE COORDINATES: N \_\_\_\_\_  
 E \_\_\_\_\_  
 ELEVATION — M.S.L. DATUM: \_\_\_\_\_  
 THETA ANGLE: \_\_\_\_\_  
 FIELD BOOK: 107 PAGE 67



LOCATION  
(Indicated by 'X')

SEAL:



### BASIS FOR MONUMENT LOCATION

(Use reverse side if necessary)

Show info such as: History of corner, with reference to Vol. and pg, dates, surveyor; exact description of monument replaced; if location computed, by taped or EDM traverse; landowner remarks, etc.

ed

Local landowner point out this particular 2" angle iron fence post as being the section corner. Other posts are wood. A Traverse of the entire section confirmed that the location of this corner to be correct. Not much to take ties to. Could not replace post with Harrison at this time.

Corner & ties o.k. 10-29-76 RW-SS  
 MAINTENANCE RECORD

Date	Init.	Remarks
12-30-81	JH-WJ	Mon & Ties OK
9-10-85	OK	K. CARLSON
2-3-86	GR-SS	OK
6-12-91	JG-CR	CORNER OK - 1 - TIE GONE (NOTHING AVAILABLE FOR NEW TIES)
4-3-96	JG-SS	OK
3-5-01	MH-SB	OK

CERTIFIED CORRECT:

*Anthony B. Kiedrowski*  
 Registered Land Surveyor

DATE: 2-22-73

### TIE SKETCH COULD NOT FIND ANGLE IRON 8-7-06-JC

(Show at least four ties)

