

30
SECTION

15
TOWN

07
RANGE

ADAMS COUNTY

COUNTY CORNER NO: 102

ROMPORTOL ID: 41507300020

PUBLIC LAND SURVEY MONUMENT RECORD

TYPE OF MONUMENT: HARRISON (BROKEN-TOP)
ADAMS COUNTY COORDINATES, NAD 83 (2007)

N. 138213.491

E. 560026.268

ELEVATION- DATUM

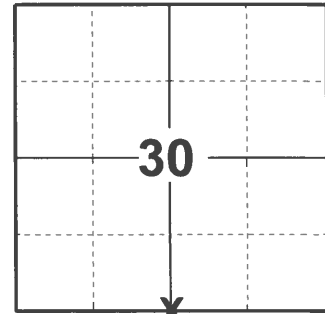
FIELD WORK DATE: 04/27/2021

BASIS FOR MONUMENT LOCATION

1977 - FOUND NO RESURVEYS OF RECORDS PERTINENT TO THIS CORNER. CORNER FALLS IN LARGE CULTIVATED FIELD AND THERE WAS NO REMAINING EVIDENCE AS TO WHERE THE ORIGINAL GOVERNMENT 1/4 POST WOULD BE. RESET THIS CORNER BY THE SINGLE PROPORTION METHOD AS OUTLINED IN THE B.L.M. MANUAL OF INSTRUCTIONS. USED AN EDM-THEODOLITE TRAVERSE.

1996 - PLS 2021 FOUND HARRISON MONUMENT LYING ON THE GROUND IN PIECES NEXT TO IRRIGATION WELL. SET ROD BASED ON DISTANCE FROM ZIETLOW SECTION SUMMARY FOR 31-15-7, DATED 8-24-77. ROD SET 24" BELOW GROUND SURFACE.

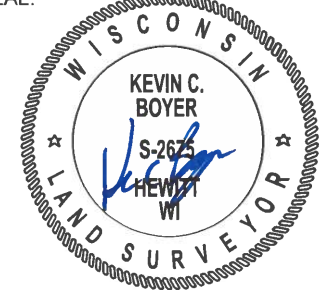
2021 - PLS 2675 FOUND HARRISON (BROKEN TOP) MONUMENT 18" BELOW GROUND SURFACE AND 1 WITNESS FROM 1977 TIE SHEET BY PLS 922. DID NOT RECOVER 3/4" IRON ROD SET BY PLS 2021 SET IN 1996, BUT FOUND 3 OF HIS WITNESSES FOR HIS SET CORNER. DID NOT ACCEPT PLS 2021 CORNER LOCATION SINCE HARRISON (BROKEN TOP) MONUMENT WAS RECOVERED AND THE WITNESS DISTANCE AGREES WITH THE MONUMENT. ACCEPTED HARRISON (BROKEN TOP) MONUMENT AS THE CORNER LOCATION. DUE TO CORNER LOCATION I USED 2 FOUND PROPERTY IRONS, A SECTION CORNER AND 2 CORNERS OF EXISTING PIVOTS FOR TIES.



LOCATION

(INDICATE CORNER BY "X")

SEAL:



DATA SHOWN HERE ON THIS TIE SHEET IS CORRECT AND COMPLETE TO THE BEST OF MY KNOWLEDGE AND BELIEF.

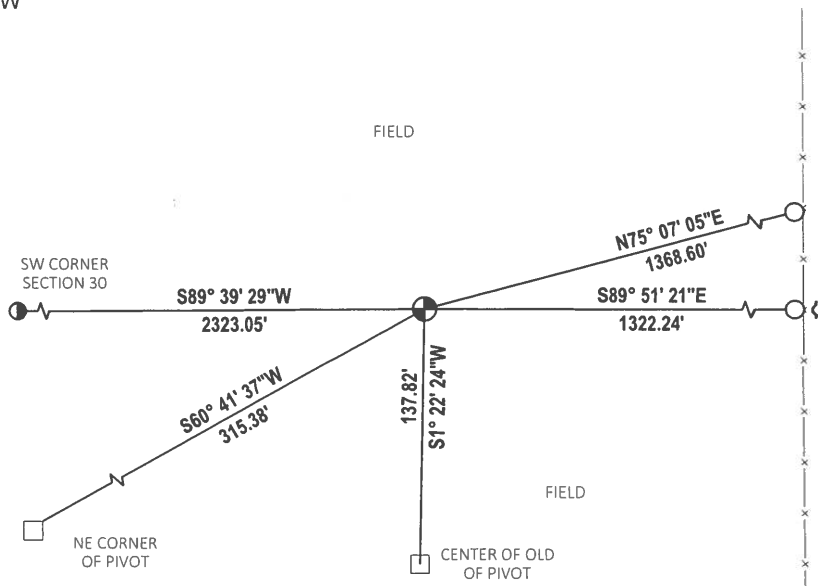
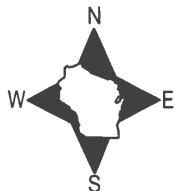
PROFESSIONAL LAND SURVEYOR

DATE 5/19/21

- TIE SKETCH

NOTE 1: PLS 2021 CORNER LOCATION FALLS S 05°35'08" W, 7.45' FROM FOUND HARRISON.

NOTE 2: HARRISON MONUMENT IS 18" BELOW GROUND SURFACE.



- FOUND 3/4" IRON ROD
- ⊕ FOUND HARRISON (BROKEN TOP) MONUMENT
- ~ STEEL FENCE POST
- FOUND SECTION CORNER

ADAMS COUNTY

Survey Monument Record

TYPE OF MONUMENT: 3/4" X 24" IRON BAR, HARRISON TO BE SET SPRING 1976

STATE PLANE COORDINATES: N _____

E _____

ELEVATION — M.S.L. DATUM: _____

THETA ANGLE: _____

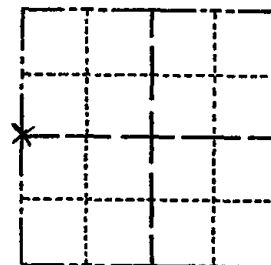
FIELD BOOK: _____ PAGE _____

CORNER NO. 848

SECTION 29

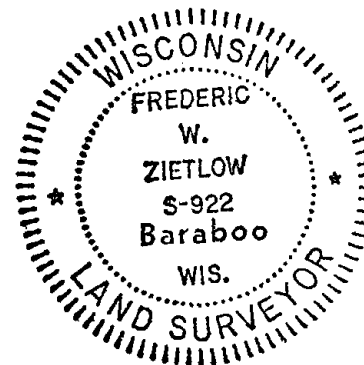
TOWN 15 N

RANGE 7 E



LOCATION
(Indicated by 'X')

SEAL:



BASIS FOR MONUMENT LOCATION

(Use reverse side if necessary)

Show info such as: History of corner, with reference to Vol. and pg, dates, surveyor; exact description of monument replaced; if location computed, by taped or EDM traverse; landowner remarks, etc.

FOUND MOUND & TRIANGULAR FORMATION OF STONES, NO RECORD OF THIS IN ADAMS COUNTY SURVEY RECORDS. FIT EDM TRAVERSE OF SECTION GOOD.

Corner & ties o.k. 5-20-76 GR-SS

MAINTENANCE RECORD

Date	Init.	Remarks
12-29-81	TH-NJ	O.K.
2-3-86	GC-SS	OK
4-11-90	MARK CARLSON	OK
6-12-91	SB-TR	TIES OK
11-29-95	SS	" "
2-27-01	MH-X	ALL OK
8-8-06	JG	ALL OK

CERTIFIED CORRECT:

Frederic W. Zietlow

Registered Land Surveyor

DATE: 1-15-76

TIE SKETCH

(Show at least four ties)

