

26
SECTION

15
TOWN

07
RANGE

ADAMS COUNTY

COUNTY CORNER NO: 99

ROMPORTOL ID: 41507262000

PUBLIC LAND SURVEY MONUMENT RECORD

TYPE OF MONUMENT: HARRISON (BROKEN-TOP)
ADAMS COUNTY COORDINATES, NAD 83 (2007)

N. 140875.876

E. 583633.648

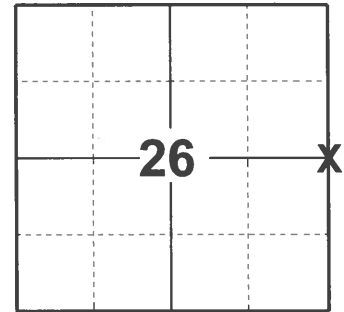
ELEVATION- _____ DATUM _____

FIELD WORK DATE: 04/14/2021

BASIS FOR MONUMENT LOCATION

1973 - PLS 878 SET ON A STRAIGHT LINE EQUIDISTANT BETWEEN SECTION CORNERS.

2021 - PLS 2675 FOUND HARRISON (BROKEN TOP) MONUMENT 4" BELOW ROAD SURFACE AND 1 WITNESS. THE MONUMENT AGREES WITH EXISTING WITNESS TREE. ACCEPTED THE HARRISON (BROKEN-TOP) MONUMENT AS THE CORNER LOCATION. SET 4 NEW TIES AND MEASURED TO THE EXISTING WITNESS TREE.



LOCATION
(INDICATE CORNER BY "X")

SEAL:



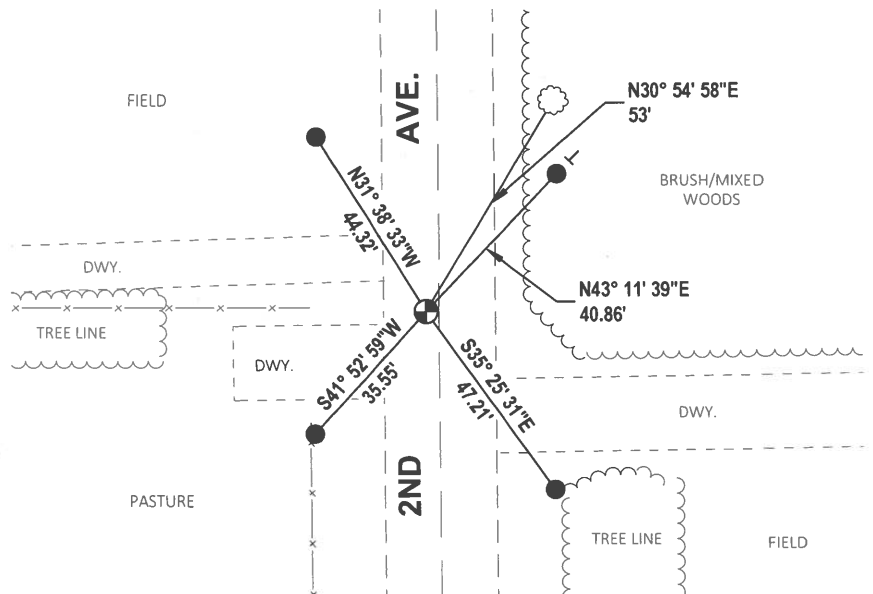
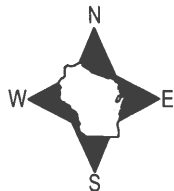
DATA SHOWN HERE ON THIS TIE SHEET IS CORRECT AND COMPLETE TO THE BEST OF MY KNOWLEDGE AND BELIEF.

PROFESSIONAL LAND SURVEYOR

DATE 5/19/21

TIE SKETCH

NOTE: CORNER LANDS 2.7'± WEST OF THE CENTERLINE OF 2ND AVE.



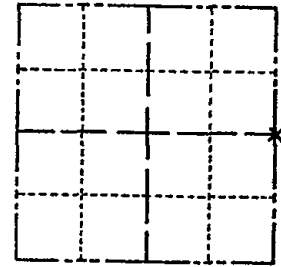
- SET 3/4" x 18" IRON REBAR, 1.50#/FT
- ⊕ FOUND HARRISON (BROKEN-TOP) MONUMENT
- VINYL "T" POST
- ☼ WITNESS TREE

ADAMS COUNTY

Survey Monument Record

TYPE OF MONUMENT: Harrison standard
 STATE PLANE COORDINATES: N _____
 E _____
 ELEVATION — M.S.L. DATUM: _____
 THETA ANGLE: _____
 FIELD BOOK: 107 PAGE 61

CORNER NO. 235
 SECTION 26
 TOWN 15
 RANGE 7



LOCATION
(Indicated by 'X')

SEAL:



BASIS FOR MONUMENT LOCATION

(Use reverse side if necessary)

Show info such as: History of corner, with reference to Vol. and pg, dates, surveyor; exact description of monument replaced; if location computed, by taped or EDM traverse; landowner remarks, etc.

Set on a straight line equidistant between section corners.

Corner & ties O.K. 10-29-76 RN-SS

MAINTENANCE RECORD

Date	Init.	Remarks
12-30-81	TH-WJ	MON. TIES O.K.
2-3-86	GR-SS	" "
5-8-91	JG-SS	2 NEW TIES
2-12-96	SS	OK
3-02-01	JG-MH	1-GONE, 1-NEW
8-7-06	JG	OK
3-17-11	SS	OK

CERTIFIED CORRECT:

Anthony B. Kiedrowski
 Registered Land Surveyor

DATE: 2-22-75

TIE SKETCH

(Show at least four ties)

