

PUBLIC LAND SURVEY MONUMENT RECORD

TYPE OF MONUMENT: HARRISON
 ADAMS COUNTY COORDINATES, NAD 83 (2007)

N. 140840.689

E. 562685.776

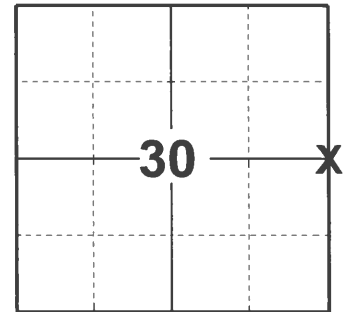
ELEVATION- DATUM

FIELD WORK DATE: 04/27/2021

BASIS FOR MONUMENT LOCATION

1976 - PLS 922 FOUND MOUND AND TRIANGULAR FORMATION OF STONES. NO RECORD OF THIS IN ADAMS COUNTY SURVEY RECORDS. FIT EDM TRAVERSE OF SECTION GOOD.

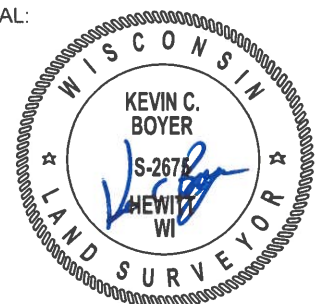
2021 - PLS 2675 FOUND HARRISON MONUMENT FLUSH WITH GROUND SURFACE, 1 TIE AND 3 WITNESSES. MONUMENT AGREES WITH THE TIE AND WITNESSES. ACCEPTED THE HARRISON MONUMENT AS THE CORNER LOCATION. SET 3 NEW TIES AND MEASURED TO THE EXISTING TIE AND WITNESSES.



LOCATION

(INDICATE CORNER BY "X")

SEAL:



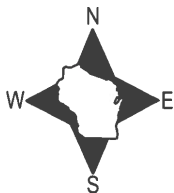
DATA SHOWN HERE ON THIS TIE SHEET IS CORRECT AND COMPLETE TO THE BEST OF MY KNOWLEDGE AND BELIEF.

PROFESSIONAL LAND SURVEYOR

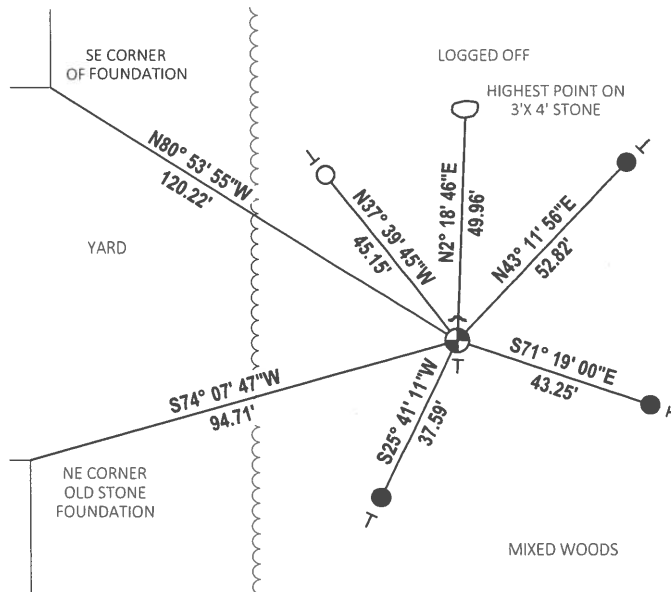
DATE 5/19/21

- TIE SKETCH

NOTE: CORNER LANDS 300± EAST OF 5TH LANE.



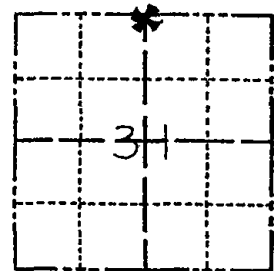
- FOUND 3/4" IRON ROD
- SET 3/4" x 18" IRON REBAR, 1.50#/FT
- ⊕ FOUND HARRISON MONUMENT
- ⌞ STEEL FENCE POST
- ├ VINYL "T" POST
- WITNESS STONE



Government Land Corner Certificate

ADAMS County
 TYPE OF MONUMENT: HARRISON
 STATE PLANE COORDINATES: N _____
 E _____
 ELEVATION — M.S.L. DATUM: _____
 THETA ANGLE: _____
 FIELD BOOK: _____ PAGE _____
 DRAWN BY: Edloff

CORNER NO. _____
 SECTION 31
 TOWN T. 15 N.
 RANGE R. 7 E.



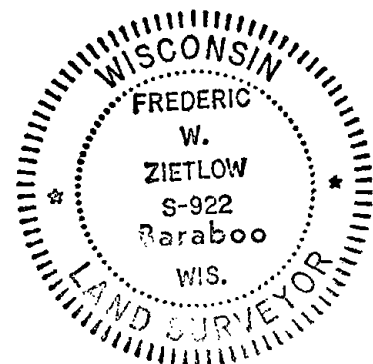
LOCATION
 (Indicated by 'X')

BASIS FOR MONUMENT LOCATION

Show info such as: History of corner, with reference to Vol. and pg., dates, surveyor; exact description of monument replaced; if location computed, by taped or EDM traverse; landowner remarks, etc. (Use reverse side if necessary)

RESEARCHED ADAMS COUNTY SURVEY RECORDS & NO RESURVEYS WERE ON FILE WHICH WERE PERTINENT TO THIS CORNER. THIS CORNER FALLS IN A LARGE CULTIVATED FIELD & THERE IS NO REMAINING EVIDENCE AS TO WHERE THE ORIGINAL GOV'T 1/4 POST WOULD HAVE BEEN LOCATED. WE RESET THIS CORNER BY THE SINGLE PROPORTIONATE METHOD AS OUTLINED IN THE D.L.M. MANUAL OF INSTRUCTIONS
 EDM. - THEODOLITE TRAVERSE

SEAL:



DATA SHOWN HERE ON
 CERTIFIED CORRECT:

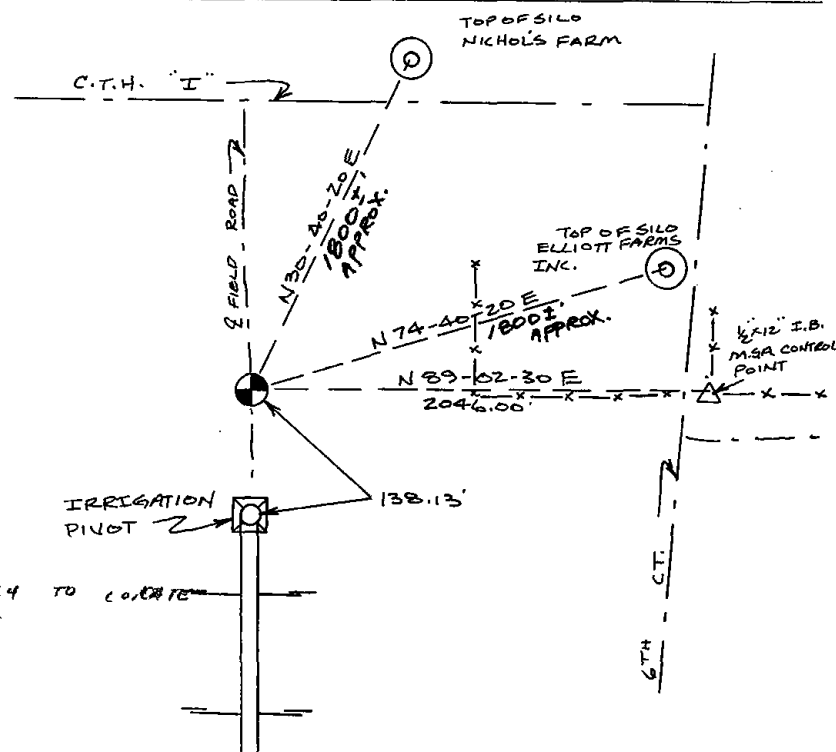
Frederic W. Zietlow
 Registered Land Surveyor

DATE: FEBRUARY 1, 1977

TIE SKETCH

Show at least four ties, also fence lines, roads, topo, size and type of witness trees and if off road - best way to arrive at corner.

NOTE: THIS IS IN A CULTIVATED AREA & THERE IS A LACK OF GOOD WITNESS OBJECTS.



MAINTENANCE RECORD

Date	Init.	Remarks
12-28-81	TH-NT	ERR. PIVOT APPROX. OK
2-3-86	GR-SJ	TIES OK - DID NOT TRY TO CORRECT
6-12-91	JG-CR	TIES OK
SEE TIE SHEET	MC	2-23-96
2-27-01	MH-SJ	ALL OK
3-1-06	JG	OK

