

PUBLIC LAND SURVEY MONUMENT RECORD

TYPE OF MONUMENT: HARRISON
 ADAMS COUNTY COORDINATES, NAD 83 (2007)

N. 138212.880
 E. 570558.251

ELEVATION- _____ DATUM _____

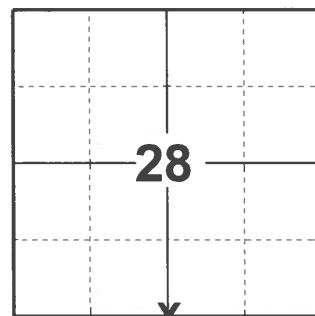
FIELD WORK DATE: 04/22/2021

BASIS FOR MONUMENT LOCATION

1976 - PLS 1103 RAN EDM/TRANSIT TRAVERSE AROUND SECTION 33 TO DETERMINE SEARCH AREA. FOUND NO EVIDENCE OF ORIGINAL CORNER OR REMONUMENTATION. SET CORNER ON LINE AND PROPORTIONAL TO ORIGINAL NOTES BETWEEN THE ADJACENT SECTION CORNERS.

1983 - PLS 1103 RAN EDM/TRANSIT TRAVERSE AROUND SECTION 33 TO DETERMINE SEARCH AREA. FOUND NO EVIDENCE OF ORIGINAL CORNER OR REMONUMENTATION. SET CORNER ON LINE AND PROPORTIONAL TO ORIGINAL NOTES BETWEEN THE ADJACENT SECTION CORNERS. NOTE: THIS CORNER HAD TO BE RESET BECAUSE AGA MODEL 76 LASER GAVE A FIVE METER ERROR IN A DISTANCE READOUT IN ONE OF THE LEGS OF THE SECTION TRAVERSE. DISREGARD ANY OTHER TIES TO THIS CORNER. CORNER WAS MOVED IN SPRING OF 77.

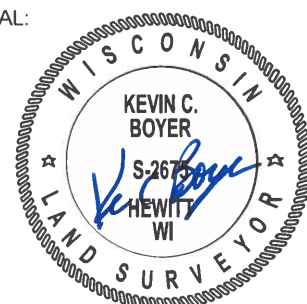
2021 - PLS 2675 FOUND HARRISON MONUMENT FLUSH WITH GROUND. DID NOT RECOVER ANY TIES OR WITNESSES. ACCEPTED HARRISON MONUMENT AS THE CORNER LOCATION AND SET 4 NEW TIES.



LOCATION

(INDICATE CORNER BY "X")

SEAL:



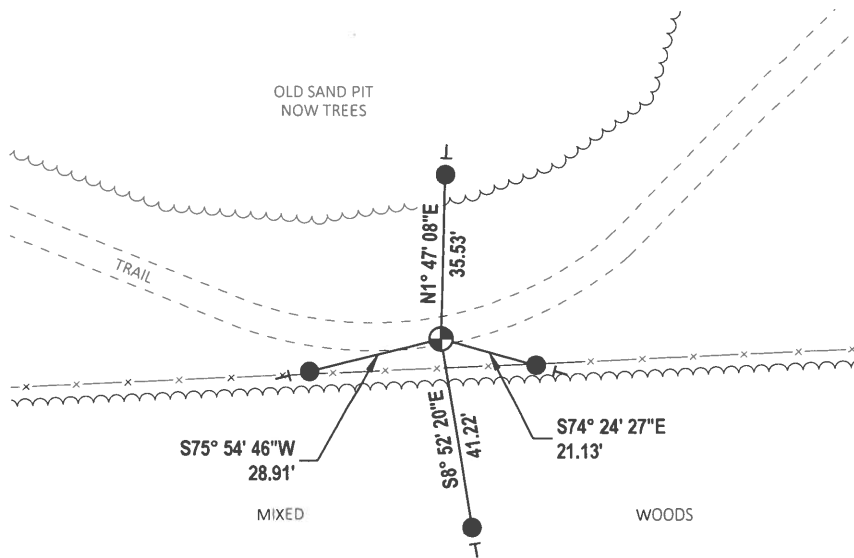
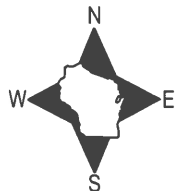
DATA SHOWN HERE ON THIS TIE SHEET IS CORRECT AND COMPLETE TO THE BEST OF MY KNOWLEDGE AND BELIEF.

PROFESSIONAL LAND SURVEYOR

DATE 5/19/21

- TIE SKETCH

NOTE: CORNER LANDS IN TRAIL, FLUSH WITH GROUND SURFACE.



- SET 3/4" x 18" IRON REBAR, 1.50#/FT
- ⊕ FOUND HARRISON MONUMENT
- ⊥ VINYL "T" POST

Government Land Corner Certificate

ADAMS County

TYPE OF MONUMENT: HARRISON

STATE PLANE COORDINATES: N _____
E _____

ELEVATION — M.S.L. DATUM: _____

THETA ANGLE: _____

FIELD BOOK: FILE PAGE _____

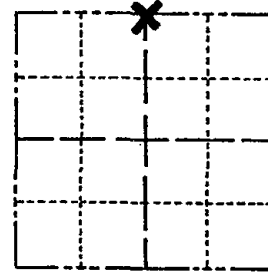
DRAWN BY: LANCE HARBEC

CORNER NO. 106

SECTION 33

TOWN 15

RANGE 7



LOCATION
(Indicated by 'X')

BASIS FOR MONUMENT LOCATION

Show info such as: History of corner, with reference to Vol. and pg., dates, surveyor; exact description of monument replaced; if location computed, by taped or EDM traverse; landowner remarks, etc. (Use reverse side if necessary)

Ran EDM/transit traverse around Section 33-15-7 to determine search area for corners.

Could find no evidence of the original corner or any remonumentation thereof.

Set corner on line and proportional to original notes between the adjacent section corners.

NOTE: This corner had to be reset because our AGA Model 76 Laser gave a five meter error in a distance readout in one of the legs of the section traverse. Disregard any other ties to this corner. Corner was moved in spring of '77.

SEAL:



DATA SHOWN HERE ON
CERTIFIED CORRECT:

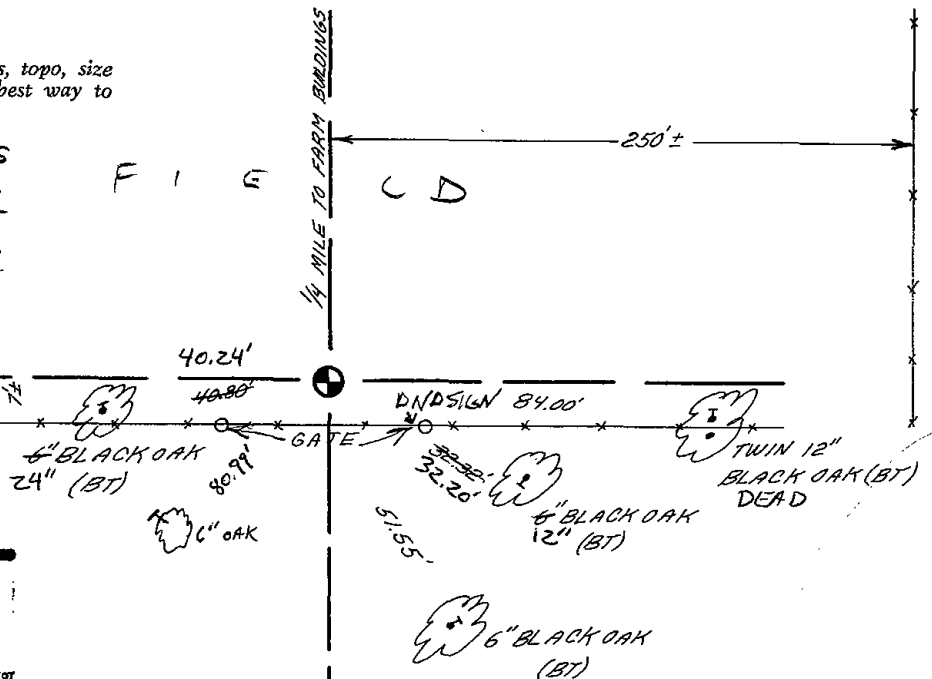
Anthony B. Kiedrowski
Registered Land Surveyor

DATE: 8-8-83

TIE SKETCH

Show at least four ties, also fence lines, roads, topo, size and type of witness trees and if off road - best way to arrive at corner.

- OK 3-3-86 - GR - SS
- 8-28-91 SS-JG - OK
- 3-3-95 MC+SH OK
- 11-29-95 SS OK
- 2-27-01 JG-MH OK
- 8-8-06 - JG OK
- 3 NEW 12-27-11 MS



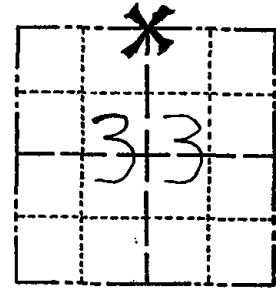
filed for record this 17th day of August 1983
per 59.60 Wisconsin Statutes.
Lance Harbeck
ADAMS COUNTY SURVEYOR

ADAMS COUNTY

Survey Monument Record

TYPE OF MONUMENT: Harrison
STATE PLANE COORDINATES: N _____
E _____
ELEVATION — M.S.L. DATUM: _____
THETA ANGLE: _____
FIELD BOOK: 38 PAGE 2

CORNER NO. 948
SECTION 33
TOWN 15
RANGE 7



LOCATION
(Indicated by 'X')

SEAL:

BASIS FOR MONUMENT LOCATION

(Use reverse side if necessary)

Show info such as: History of corner, with reference to Vol. and pg, dates, surveyor; exact description of monument replaced; if location computed, by taped or EDM traverse; landowner remarks, etc.

Ran EDM/transit traverse around Section 33-15-7 to determine search areas for corners.

Could find no evidence of the original corner or any remonumentation thereof.

Set corner on line and proportional to original notes between the adjacent section corners.



CERTIFIED CORRECT:

Dale C. Hagen
Registered Land Surveyor

DATE: 6-1-1976

MAINTENANCE RECORD

Date	Init.	Remarks
12-28-81	TH-NJ	O.K.

TIE SKETCH

(Show at least four ties)

NOTE:

Ties in trees to nail in disc.

