

26
SECTION

15
TOWN

07
RANGE

ADAMS COUNTY

COUNTY CORNER NO: 110

ROMPORTOL ID: 41507260020

PUBLIC LAND SURVEY MONUMENT RECORD

TYPE OF MONUMENT: HARRISON (BROKEN-TOP)
ADAMS COUNTY COORDINATES, NAD 83 (2007)

N. 138228.185

E. 581005.737

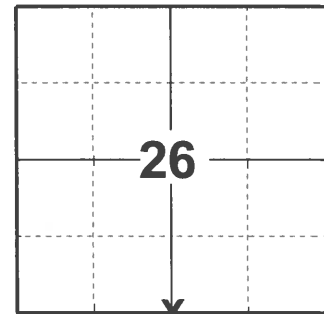
ELEVATION- DATUM

FIELD WORK DATE: 04/14/2021

BASIS FOR MONUMENT LOCATION

1973 - PLS 878 ACCEPTED LOCATION OF FENCE CORNER AS CORRECT AFTER COMPARING WITH DATA FROM TRAVERSE OF THE ENTIRE SECTION. NO OTHER EVIDENCE AVAILABLE.

2021 - PLS 2675 FOUND HARRISON (BROKEN-TOP) MONUMENT 6" BELOW THE GROUND SURFACE. DID NOT RECOVER ANY EXISTING TIES OR WITNESSES. ACCEPTED THE HARRISON (BROKEN-TOP) MONUMENT AS THE CORNER LOCATION AND SET 4 NEW TIES.



LOCATION

(INDICATE CORNER BY "X")

SEAL:



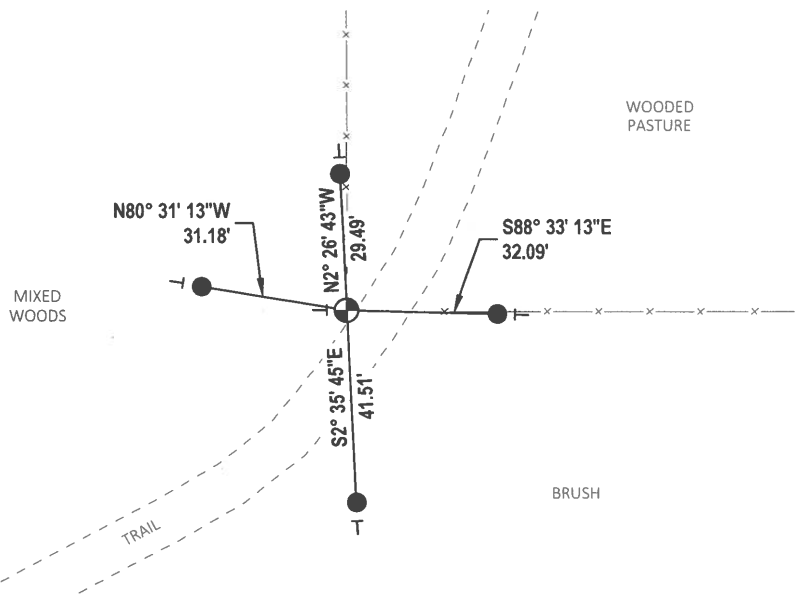
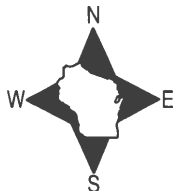
DATA SHOWN HERE ON THIS TIE SHEET IS CORRECT AND COMPLETE TO THE BEST OF MY KNOWLEDGE AND BELIEF.

PROFESSIONAL LAND SURVEYOR

DATE 5/19/21

TIE SKETCH

NOTE: CORNER LANDS 1' OFF THE EDGE OF THE TRAIL.



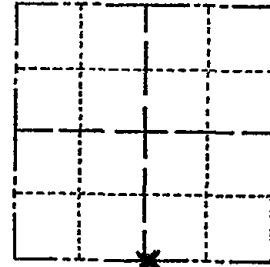
- SET 3/4" x 18" IRON REBAR, 1.50#/FT
- ⊕ FOUND HARRISON (BROKEN-TOP) MONUMENT
- ⊖ VINYL "T" POST

ADAMS COUNTY

Survey Monument Record

TYPE OF MONUMENT: Harrison standard
 STATE PLANE COORDINATES: N _____
 E _____
 ELEVATION — M.S.L. DATUM: _____
 THETA ANGLE: _____
 FIELD BOOK: 107 PAGE 55

CORNER NO. 232
 SECTION 26
 TOWN 15
 RANGE 7



LOCATION
 (Indicated by 'X')

SEAL:



BASIS FOR MONUMENT LOCATION

(Use reverse side if necessary)

Show info such as: History of corner, with reference to Vol. and pg, dates, surveyor; exact description of monument replaced; if location computed, by taped or EDM traverse; landowner remarks, etc.

Accepted location of fence corner as correct after comparing with data from a traverse of the entire section. No other evidence available.

Corner o.k. - trees scribed "BT" 10-29-76 RN-SS

MAINTENANCE RECORD

Date	Init.	Remarks
10-30-81	TH-NJ	M 20 = TIES O.K.
3-26-86	OR-SS	" " "
5-3-91	JL-SS	" " "
2-12-96	SS	ADD 1 TIE
3-3-06	JG	OK
12-21-11	MS	OK

CERTIFIED CORRECT:

Anthony B. Kiedrowski
 Registered Land Surveyor

DATE: 2-22-73

TIE SKETCH

(Show at least four ties)

