

25  
SECTION

15  
TOWN

07  
RANGE

# ADAMS COUNTY

COUNTY CORNER NO: 112

ROMPORTOL ID: 41507250020

## PUBLIC LAND SURVEY MONUMENT RECORD

TYPE OF MONUMENT: HARRISON  
ADAMS COUNTY COORDINATES, NAD 83 (2007)

N. 138249.390

E. 586296.636

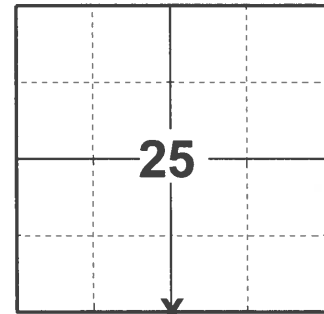
ELEVATION- \_\_\_\_\_ DATUM \_\_\_\_\_

FIELD WORK DATE: 04/14/2021

### BASIS FOR MONUMENT LOCATION

1976 - PLS 1103 RAN EDM/T2 TRAVERSE AROUND SECTION 25 TO DETERMINE SEARCH AREA. FOUND REMAINS OF ORIGINAL BEARING TREE IN NORTHWEST QUADRANT. EXCAVATION AT LOCATION REFERENCED TO BY BEARING TREE YIELDED NO EVIDENCE OF ORIGINAL CORNER OR REMONUMENTATION. RE-ESTABLISHED CORNER AT LOCATION INDICATED BY BEARING TREE.

2021 - PLS 2675 FOUND HARRISON MONUMENT 4" BELOW ROAD SURFACE AND 1 WITNESS. MONUMENT AGREES WITH THE WITNESS. ACCEPTED HARRISON MONUMENT AS THE CORNER LOCATION. SET 3 NEW TIES AND MEASURED TO A FOUND PROPERTY IRON AND EXISTING WITNESS.



LOCATION

(INDICATE CORNER BY "X")

SEAL:



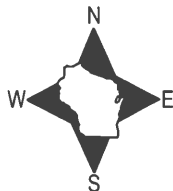
DATA SHOWN HERE ON THIS TIE SHEET IS CORRECT AND COMPLETE TO THE BEST OF MY KNOWLEDGE AND BELIEF.

PROFESSIONAL LAND SURVEYOR

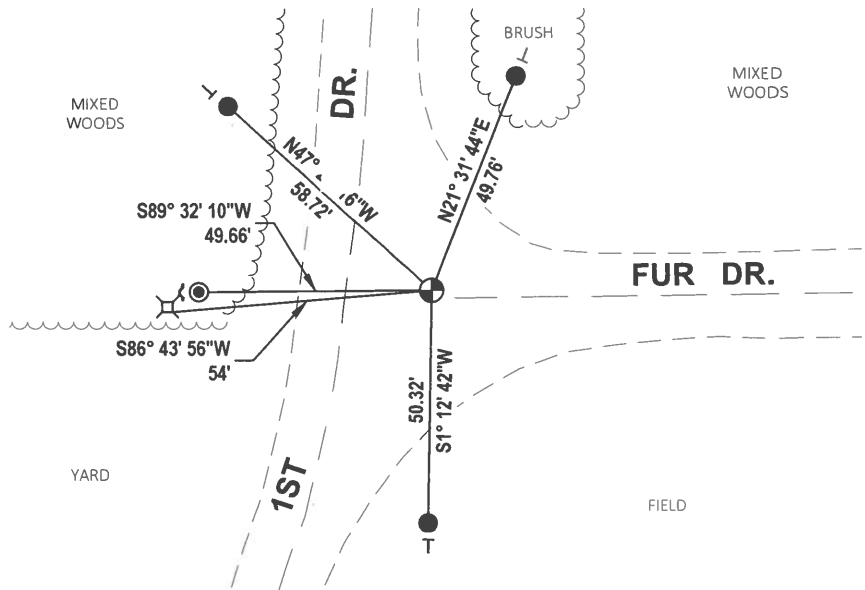
DATE 5/19/21

### TIE SKETCH

NOTE: CORNER LANDS 1.9± NORTH OF THE CENTERLINE OF FUR DR.



- SET 3/4" x 18" IRON REBAR, 1.50#/FT
- ⊕ FOUND HARRISON MONUMENT
- ⊙ FOUND 1-1/4" OD PIPE
- ~ STEEL FENCE POST
- ┆ VINYL "T" POST
- ⊕ WITNESS PEDISTAL

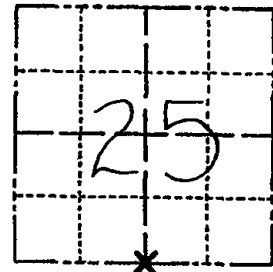


**ADAMS COUNTY**

**Survey Monument Record**

TYPE OF MONUMENT: HARRISON  
 STATE PLANE COORDINATES: N \_\_\_\_\_  
 E \_\_\_\_\_  
 ELEVATION — M.S.L. DATUM: \_\_\_\_\_  
 THETA ANGLE: \_\_\_\_\_  
 FIELD BOOK: 38 PAGE 12

CORNER NO. 112  
 SECTION 25  
 TOWN 15  
 RANGE 7



LOCATION  
(Indicated by 'X')

SEAL:



**BASIS FOR MONUMENT LOCATION**

(Use reverse side if necessary)

Show info such as: History of corner, with reference to Vol. and pg, dates, surveyor; exact description of monument replaced; if location computed, by taped or EDM traverse; landowner remarks, etc.

Ran EDM/T2 traverse around Section 25 to determine search area.

Found remains of original bearing tree in the Northwest Quadrant. Excavation at the location referenced by this bearing tree yielded no evidence of the original corner or any remonumentation.

Re-established corner at location indicated by bearing tree.

CERTIFIED CORRECT:

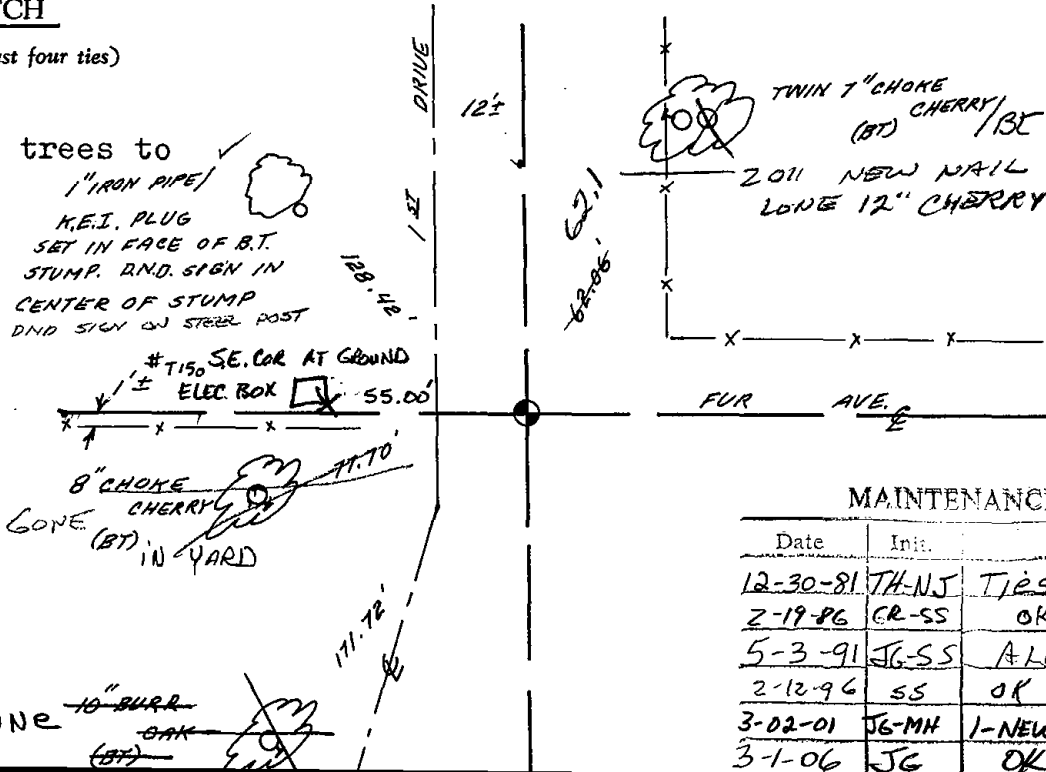
*Dale C. Hagen*  
 Registered Land Surveyor  
 DATE: 12-2-76

**TIE SKETCH**

(Show at least four ties)

**NOTE**

Ties in trees to nail in disc.  
 1" IRON PIPE  
 K.E.I. PLUG  
 SET IN FACE OF B.T. STUMP. AND SIGN IN CENTER OF STUMP AND SIGN ON STEEL POST



**MAINTENANCE RECORD**

Date	Init.	Remarks
12-30-81	TH-NJ	Ties o.k
2-19-86	CR-SS	OK
5-3-91	JG-SS	ALL OK
2-12-96	SS	OK
3-02-01	JG-MH	1-NEW
3-1-06	JG	OK