

36 SECTION 15 TOWN 06 RANGE

ADAMS COUNTY

COUNTY CORNER NO: 120
ROMPORTOL ID: 41506362000

PUBLIC LAND SURVEY MONUMENT RECORD

TYPE OF MONUMENT: HARRISON (BROKEN-TOP)
ADAMS COUNTY COORDINATES, NAD 83 (2007)

N. 135548.290
E. 557704.672

ELEVATION- DATUM

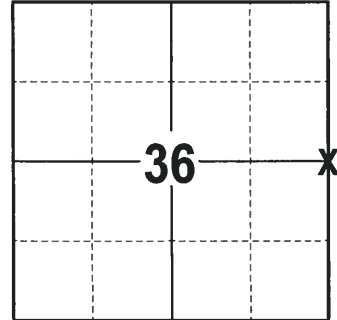
FIELD WORK DATE: 09/18/2017

BASIS FOR MONUMENT LOCATION

1977 - PLS 922 FOUND REMNANTS OF ONE ORIGINAL BEARING TREE. (DEPRESSION IN GROUND AND ROOTS) RE-SET CORNER FROM GOVT TIES. SET A 30" HARRISON MONUMENT AT THE CORNER LOCATION AND TIED OUT.

1999 - PLS 1397 EXISTING MONUMENT WAS FOUND AT THE CORNER LOCATION. MONUMENT WAS REMOVED AND RAISED DUE TO RECONSTRUCTION OF C.T.H. B. CORNER WAS RE-TIED.

2017 - PLS 2994 FOUND A HARRISON MONUMENT WITH THE TOP BROKEN OFF 8" BELOW THE ROAD SURFACE. ACCEPTED THE HARRISON MONUMENT AS THE CORNER LOCATION, SET 4 NEW TIES AND MEASURED THE TIES.



LOCATION
(INDICATE CORNER BY "X")

SEAL:



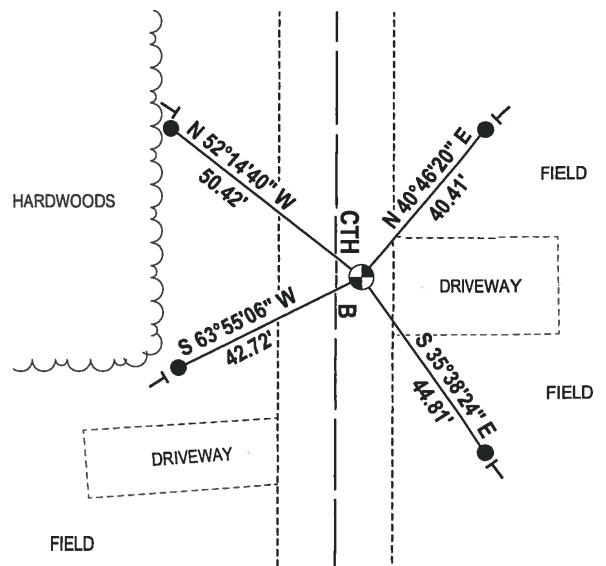
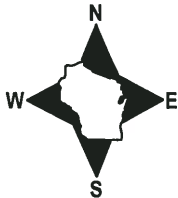
DATA SHOWN HERE ON THIS TIE SHEET IS CORRECT AND COMPLETE TO THE BEST OF MY KNOWLEDGE AND BELIEF.

PROFESSIONAL LAND SURVEYOR

DATE 11-15-17

- TIE SKETCH -

NOTE: THE CORNER FALLS 5'± EAST OF THE CENTERLINE OF CTH B.



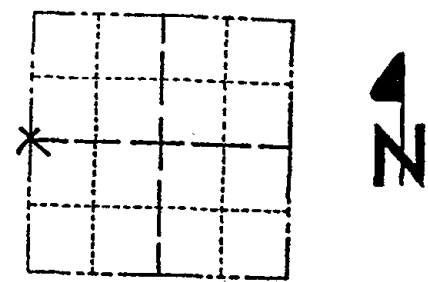
- 3/4" x 18" IRON REBAR SET, 1.50#/FT
- ⊙ HARRISON (BROKEN-TOP) FOUND
- ⊣ VINYL "T" POST

ADAMS COUNTY

Survey Monument Record

TYPE OF MONUMENT: 30" HARRISON MARKER
 STATE PLANE COORDINATES: N _____
 E _____
 ELEVATION — M.S.L. DATUM: _____
 THETA ANGLE: _____
 FIELD BOOK: _____ PAGE _____

CORNER NO. 114
 SECTION 31
 TOWN 15N
 RANGE 7E



LOCATION
(Indicated by 'X')

SEAL:

BASIS FOR MONUMENT LOCATION

(Use reverse side if necessary)

Show info such as: History of corner, with reference to Vol. and pg, dates, surveyor; exact description of monument replaced; if location computed, by taped or EDM traverse; landowner remarks, etc.

Existing Monument was found in place. Monument was removed and raised due to reconstruction of C.T.H. "B". All tie measurements are horizontal measurements unless noted otherwise.

OK 2-26-01 - JG
OK 3-1-06 - JG
OK 12-22-11 MS

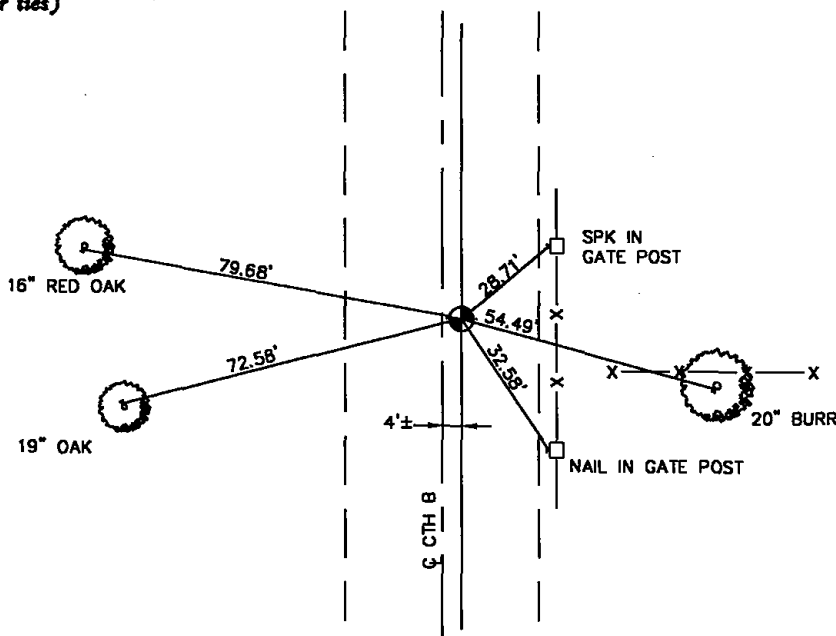


CERTIFIED CORRECT:
Dennis J. Russell
 Registered Land Surveyor
 DATE: July 26, 1999

TIE SKETCH

(Show at least four ties)

ALL MEASUREMENTS ARE HORIZONTAL.



ADAMS COUNTY

Survey Monument Record

TYPE OF MONUMENT: 30" STANDARD HARRISON

STATE PLANE COORDINATES: N _____

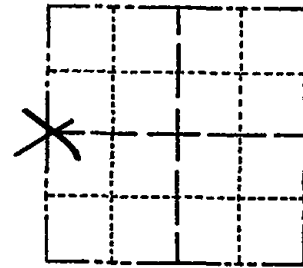
E _____

ELEVATION — M.S.L. DATUM: _____

THETA ANGLE: _____

FIELD BOOK: 486 PAGE 55

CORNER NO. 114
 SECTION 31
 TOWN 15N
 RANGE 7E



LOCATION
(Indicated by 'X')

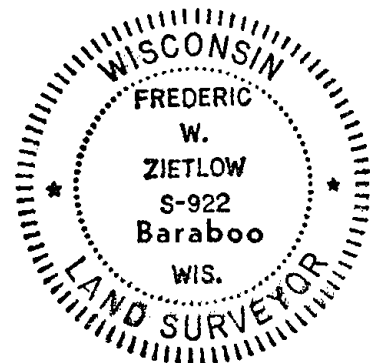
SEAL:

BASIS FOR MONUMENT LOCATION

(Use reverse side if necessary)

Show info such as: History of corner, with reference to Vol. and pg, dates, surveyor; exact description of monument replaced; if location computed, by taped or EDM traverse; landowner remarks, etc.

FOUND REMNANTS OF ONE ORIGINAL BEARING TREE. (DEPRESSION IN GROUND AND ROOTS) RESET CORNER FROM GOV'T TIES.



MAINTENANCE RECORD

Date	Init.	Remarks
10-21-81	TH-LC	MON + TIES O.K.
2-3-86	G.R.-SS	OK
1-31-91	KZ-SG	ALL OK

CERTIFIED CORRECT:

Frederic W. Zietlow
 Registered Land Surveyor

DATE: AUGUST 24, 1977

TIE SKETCH

(Show at least four ties)

