

32  
SECTION

15  
TOWN

07  
RANGE

# ADAMS COUNTY

COUNTY CORNER NO: 116

ROMPORTOL ID: 41507322000

## PUBLIC LAND SURVEY MONUMENT RECORD

TYPE OF MONUMENT: HARRISON  
ADAMS COUNTY COORDINATES, NAD 83 (2007)

N. 135557.642

E. 567906.793

ELEVATION- \_\_\_\_\_ DATUM \_\_\_\_\_

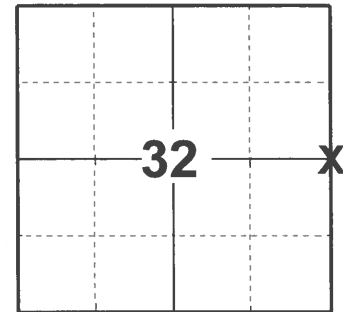
FIELD WORK DATE: 04/22/2021

### BASIS FOR MONUMENT LOCATION

1976 - PLS 1103 RAN EDM/TRANSIT TRAVERSE AROUND SECTION 33-15-7 TO DETERMINE SEARCH AREA. FOUND NO EVIDENCE OF THE ORIGINAL CORNER OR ANY SUBSEQUENT REMONUMENTATION. SET CORNER ON LINE AND PROPORTIONAL TO ORIGINAL NOTES BETWEEN ADJACENT SECTION CORNERS.

1983- PLS 878 RAN EDM/ TRANSIT TRAVERSE AROUND SECTION 33-15-7 TO DETERMINE SEARCH AREA. FOUND NO EVIDENCE OF THE ORIGINAL CORNER OR ANY SUBSEQUENT REMONUMENTATION. SET CORNER ON LINE AND PROPORTIONAL TO ORIGINAL NOTES BETWEEN THE ADJACENT SECTION CORNERS. CORNER HAD TO BE RESET DUE TO OUR AGA MODEL 76 LASER GAVE A 5 METER ERROR IN A DISTANCE READOUT IN ONE OF THE LEGS OF THE SECTION TRAVERSE. DISREGARD ANY OTHER TIES TO THIS CORNER. CORNER WAS MOVED IN THE SPRING OF 1977.

2021 - PLS 2675 FOUND HARRISON MONUMENT FLUSH WITH GROUND SURFACE AND 2 WITNESS TREES. THE MONUMENT AGREES WITH THE EXISTING WITNESS TREES. ACCEPTED HARRISON MONUMENT AS THE CORNER LOCATION. SET 4 NEW TIES AND MEASURED TO THE EXISTING WITNESSES.



LOCATION  
(INDICATE CORNER BY "X")

SEAL:



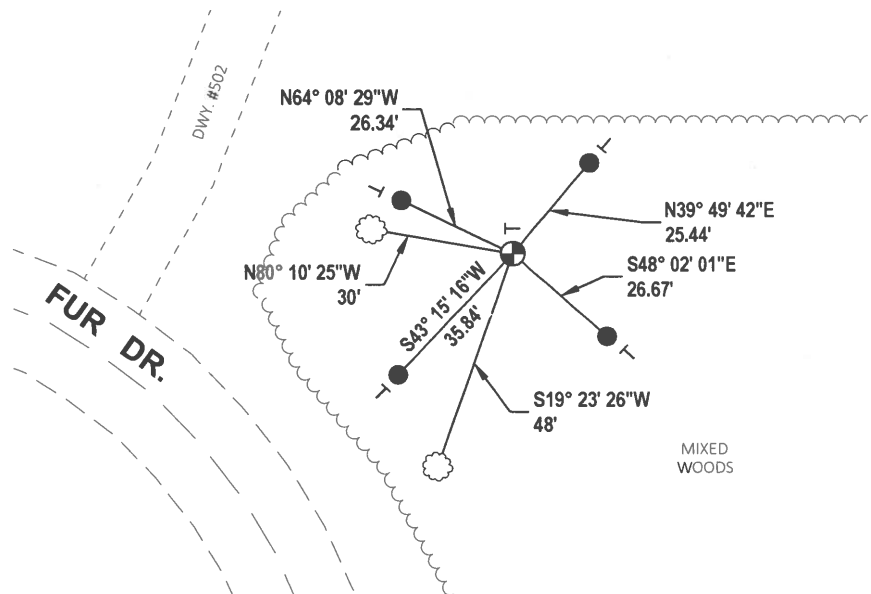
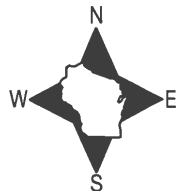
DATA SHOWN HERE ON THIS TIE SHEET IS CORRECT AND COMPLETE TO THE BEST OF MY KNOWLEDGE AND BELIEF.

PROFESSIONAL LAND SURVEYOR

DATE 5/19/21

### TIE SKETCH

NOTE: CORNER LANDS 78'± NORTHEAST OF THE CENTERLINE OF FUR DR.



- SET 3/4" x 18" IRON REBAR, 1.50#/FT
- ⊕ FOUND HARRISON MONUMENT
- ⊥ VINYL "T" POST
- ⊗ WITNESS TREE

# Government Land Corner Certificate

ADAMS County

TYPE OF MONUMENT: HARRISON

STATE PLANE COORDINATES: N \_\_\_\_\_  
E \_\_\_\_\_

ELEVATION — M.S.L. DATUM: \_\_\_\_\_

THETA ANGLE: \_\_\_\_\_

FIELD BOOK: FILE PAGE \_\_\_\_\_

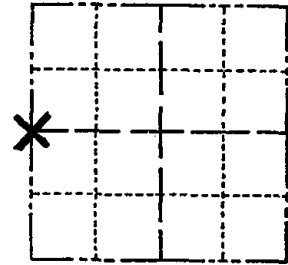
DRAWN BY: LANCE HABECK

CORNER NO. 116

SECTION 33

TOWN 15

RANGE 7



LOCATION  
(Indicated by 'X')

SEAL:



DATA SHOWN HERE ON  
CERTIFIED CORRECT:

Anthony B. Kiedrowski  
Registered Land Surveyor

DATE: 8-8-83

## BASIS FOR MONUMENT LOCATION

Show info such as: History of corner, with reference to Vol. and pg., dates, surveyor; exact description of monument replaced; if location computed, by taped or EDM traverse; landowner remarks, etc. (Use reverse side if necessary)

Ran EDM/transit traverse around Section 33-15-7 to determine search areas.

Could find no evidence of the original corner or any subsequent remonumentation.

Set corner on line and proportional to original notes between the adjacent section corners.

NOTE: This corner had to be reset because our AGA Model 76 Laser gave a five meter error in a distance readout in one of the legs of the section traverse. Disregard any other ties to this corner. Corner was moved in spring of '77.

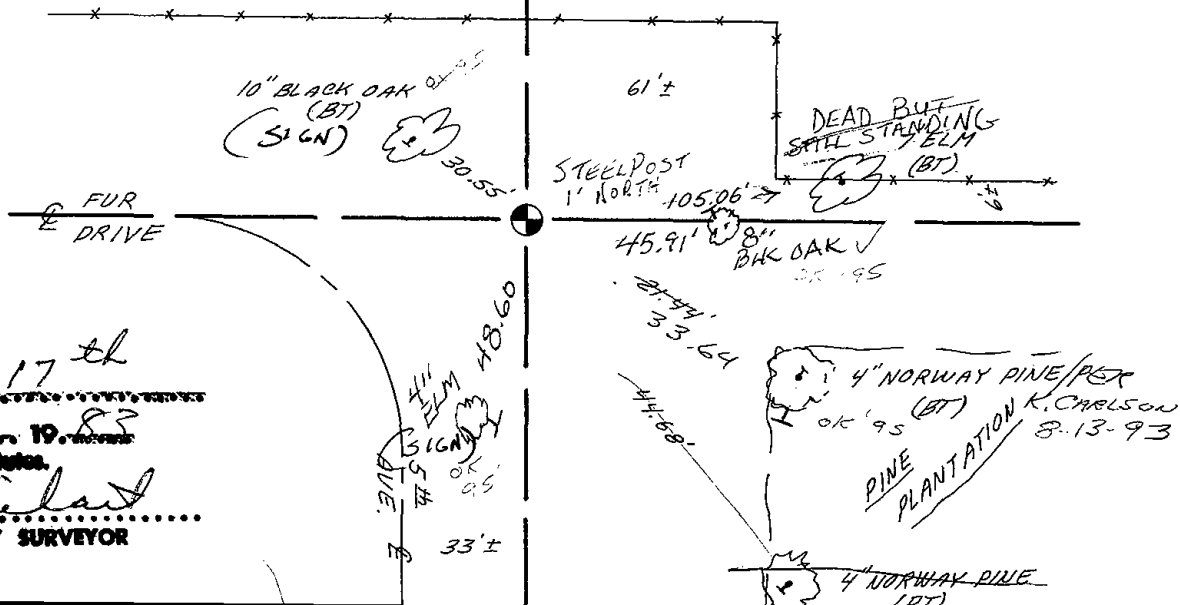
5-3-91 SS-IG 2-NEW TIES, MON OK

2-26-01-JG-OK

## TIE SKETCH

3-17-11 SS OK

Show at least four ties, also fence lines, roads, topo, size and type of witness trees' and if off road - best way to arrive at corner.



Filed for record this 17<sup>th</sup> day of August 1983  
per 89.00 Wisconsin Statutes.  
[Signature]  
ADAMS COUNTY SURVEYOR

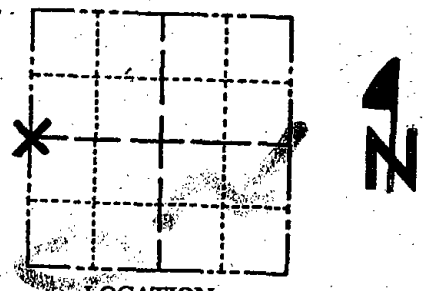


Government Land Corner Certificate

ADAMS County

CORNER NO. 116  
 SECTION 33  
 TOWN 15  
 RANGE 7

TYPE OF MONUMENT HARRISON  
 STATE PLANE COORDINATES: N \_\_\_\_\_  
 E \_\_\_\_\_  
 ELEVATION — M.S.L. DATUM: \_\_\_\_\_  
 THETA ANGLE: \_\_\_\_\_  
 FIELD BOOK: FILE PAGE \_\_\_\_\_  
 DRAWN BY: LANCE HABECK



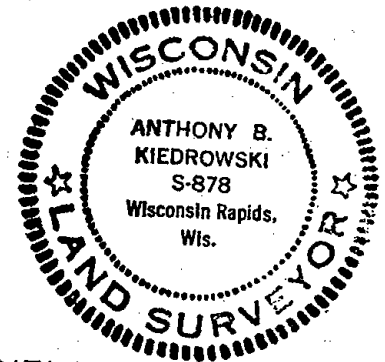
LOCATION  
(Indicated by 'X')

BASIS FOR MONUMENT LOCATION

Show info such as: History of corner, with reference to vol. and pg., dates, surveyor; exact description of monument replaced; if location computed, by taped or EDM traverse; landowner remarks, etc. (Use reverse side if necessary)

Ran EDM/transit traverse around Section 33-15-7 to determine search areas.  
 Could find no evidence of the original corner or any subsequent remonumentation.  
 Set corner on line and proportional to original notes between the adjacent section corners.

SEAL:



DATA SHOWN HERE ON CERTIFIED CORRECT:

Anthony B. Kiedrowski  
 Registered Land Surveyor

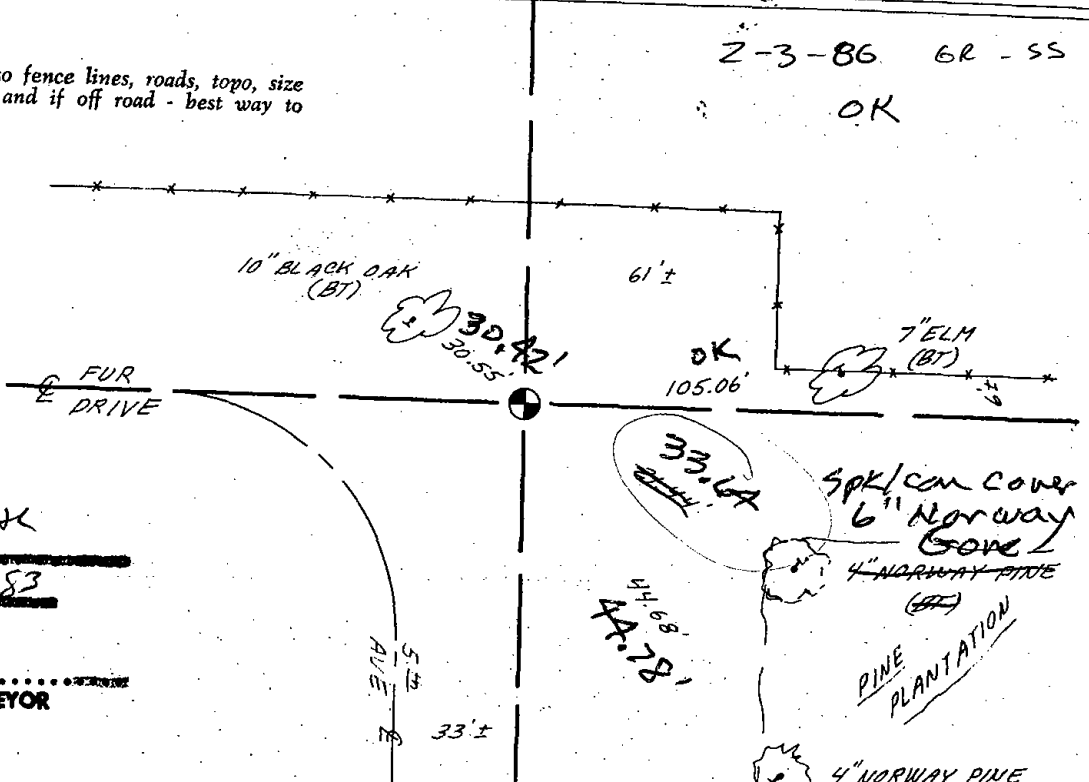
DATE: 8-6-83

NOTE: This corner had to be reset because our AGA Model 76 Laser gave a five meter error in a distance readout in one of the legs of the section traverse. Disregard any other ties to this corner. Corner was moved in spring of '77.

Ties checked Aug 13, 1983 K. Carlson

TIE SKETCH

Show at least four ties, also fence lines, roads, topo, size and type of witness trees and if off road - best way to arrive at corner.



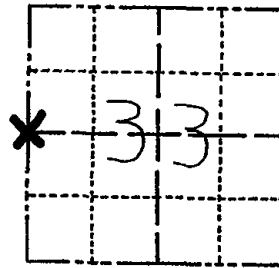
28K  
 filed for record this...  
 day of Sept 1983  
 per 59.60 Wisconsin Statutes.  
[Signature]  
 ADAMS COUNTY SURVEYOR

# ADAMS COUNTY

## Survey Monument Record

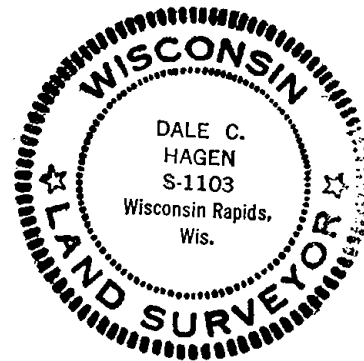
TYPE OF MONUMENT: Harrison  
 STATE PLANE COORDINATES: N \_\_\_\_\_  
 E \_\_\_\_\_  
 ELEVATION — M.S.L. DATUM: \_\_\_\_\_  
 THETA ANGLE: \_\_\_\_\_  
 FIELD BOOK: 38 PAGE 3

CORNER NO. 950<sup>(116)</sup>  
 SECTION 33  
 TOWN 15  
 RANGE 7



LOCATION  
(Indicated by 'X')

SEAL:



### BASIS FOR MONUMENT LOCATION

(Use reverse side if necessary)

Show info such as: History of corner, with reference to Vol. and pg, dates, surveyor; exact description of monument replaced; if location computed, by taped or EDM traverse; landowner remarks, etc.

Ran EDM/transit traverse around Section 33-15-7 to determine search areas.

Could find no evidence of the original corner or any subsequent remonumentation.

Set corner on line and proportional to original notes between the adjacent Section corners.

CERTIFIED CORRECT:

*Dale C. Hagen*

Registered Land Surveyor

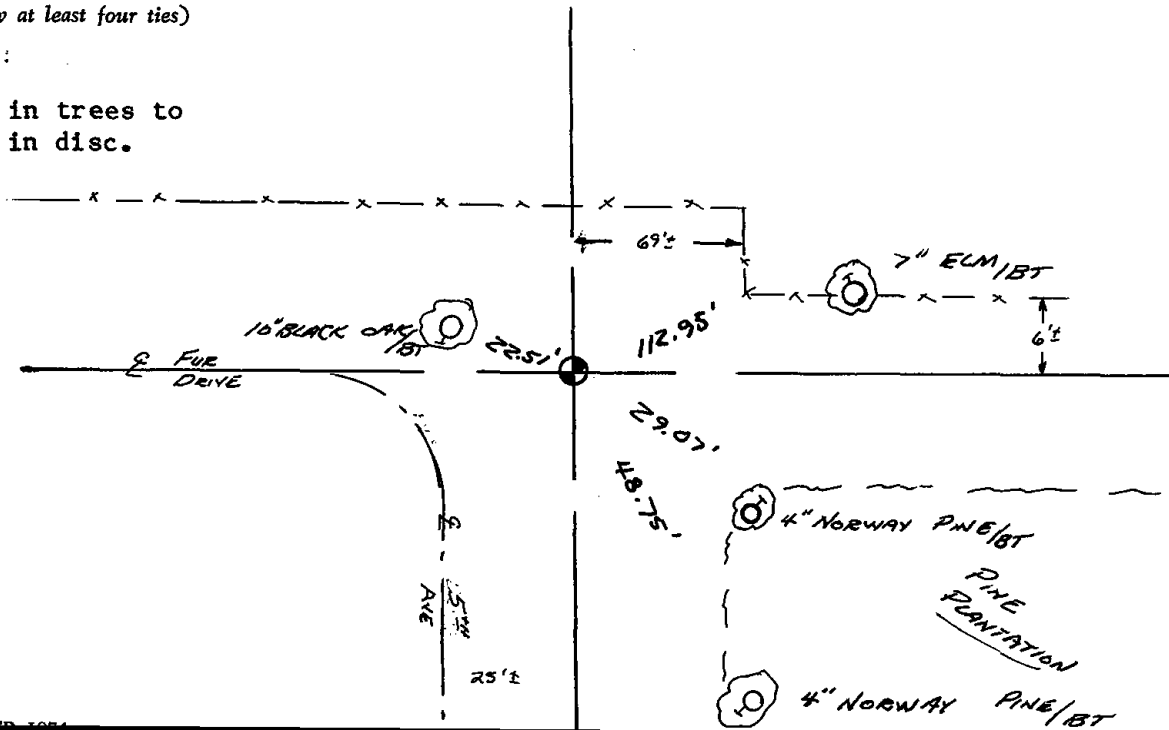
DATE: 6-1-1976

### TIE SKETCH

(Show at least four ties)

#### NOTE:

Ties in trees to nail in disc.



MAINTENANCE RECORD

Date	Inch.	Remarks
12-28-81	TH-NJ	O.K