

PUBLIC LAND SURVEY MONUMENT RECORD

TYPE OF MONUMENT: ADAMS COUNTY ALUMINUM CAP IN CONCRETE
ADAMS COUNTY COORDINATES, NAD 83 (2007)

N. 135598.885

E. 578407.248

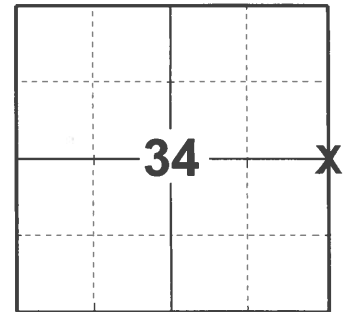
ELEVATION- _____ DATUM _____

FIELD WORK DATE: 04/15/2021

BASIS FOR MONUMENT LOCATION

1976 - PLS 1103 RAN EDM TRANSIT TRAVERSE AROUND SECTION 34 TO EAST QUARTER CORNER OF SECTION 33. FOUND 5" DIAMETER CONCRETE MONUMENT WITH LEAD CAP. BELIEVE CAP WAS SET BY RAY PHILLIPS, NO RECORDS FOUND TO VERIFY. ACCEPTED MONUMENT AS CORNER LOCATION.

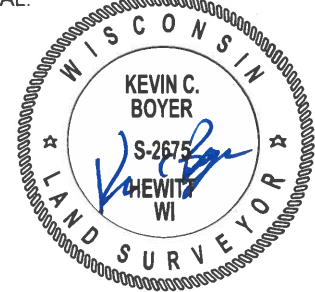
2021 - PLS 2675 FOUND ADAMS COUNTY ALUMINUM CAP IN CONCRETE 6" ABOVE GROUND SURFACE AND 2 WITNESSES. MONUMENT AGREES WITH ALL 3 WITNESSES. ACCEPTED THE ADAMS COUNTY ALUMINUM CAP IN CONCRETE AS THE CORNER LOCATION. SET 4 NEW TIES AND MEASURED TO THE EXISTING 2 WITNESSES.



LOCATION

(INDICATE CORNER BY "X")

SEAL:



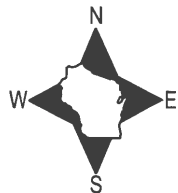
DATA SHOWN HERE ON THIS TIE SHEET IS CORRECT AND COMPLETE TO THE BEST OF MY KNOWLEDGE AND BELIEF.

PROFESSIONAL LAND SURVEYOR

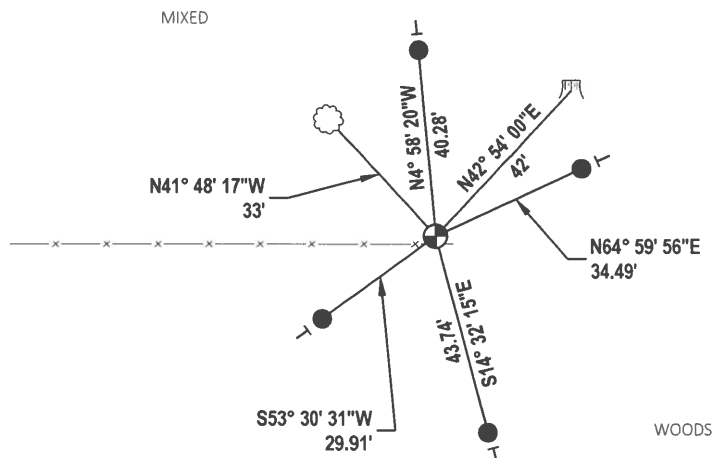
DATE 5/19/21

TIE SKETCH

NOTE: CORNER LANDS 1.6'± NORTH OF FENCE LINE.



- SET 3/4" x 18" IRON REBAR, 1.50#/FT
- ⊕ FOUND ADAMS COUNTY ALUMINUM CAP IN CONCRETE
- ┆ VINYL "T" POST
- ☁ WITNESS TREE
- ▭ WITNESS STUMP



ADAMS COUNTY

Survey Monument Record

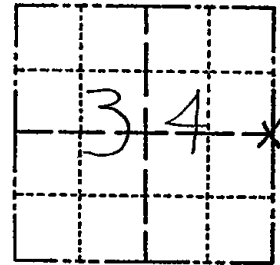
TYPE OF MONUMENT: 3" Dia. Concrete Monument with Cap
STATE PLANE COORDINATES: N _____
E _____

ELEVATION — M.S.L. DATUM: _____

THETA ANGLE: _____

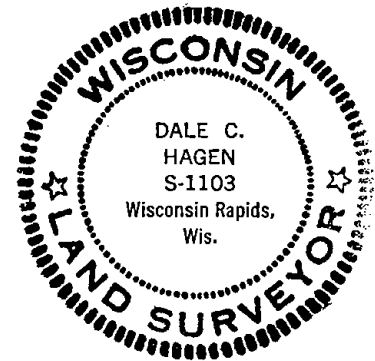
FIELD BOOK: 38 PAGE 3

CORNER NO. 951
SECTION 34
TOWN 15
RANGE 7



LOCATION
(Indicated by 'X')

SEAL:



BASIS FOR MONUMENT LOCATION

(Use reverse side if necessary)

Show info such as: History of corner, with reference to Vol. and pg, dates, surveyor; exact description of monument replaced; if location computed, by taped or EDM traverse; landowner remarks, etc.

Ran EDM/transit traverse around Section 34 and to East Quarter corner of Section 33.

Found 5" Diameter Concrete Monument with lead cap with 'Adams County' and 'Do Not Disturb' on top.

Believed set by Ray Phillips, previous Adams County Surveyor, but as of now, no records to verify this belief have been found.

Accepted monument as found and did not replace, because the monument is in excellent shape.

CERTIFIED CORRECT:

Dale C. Hagen
Registered Land Surveyor

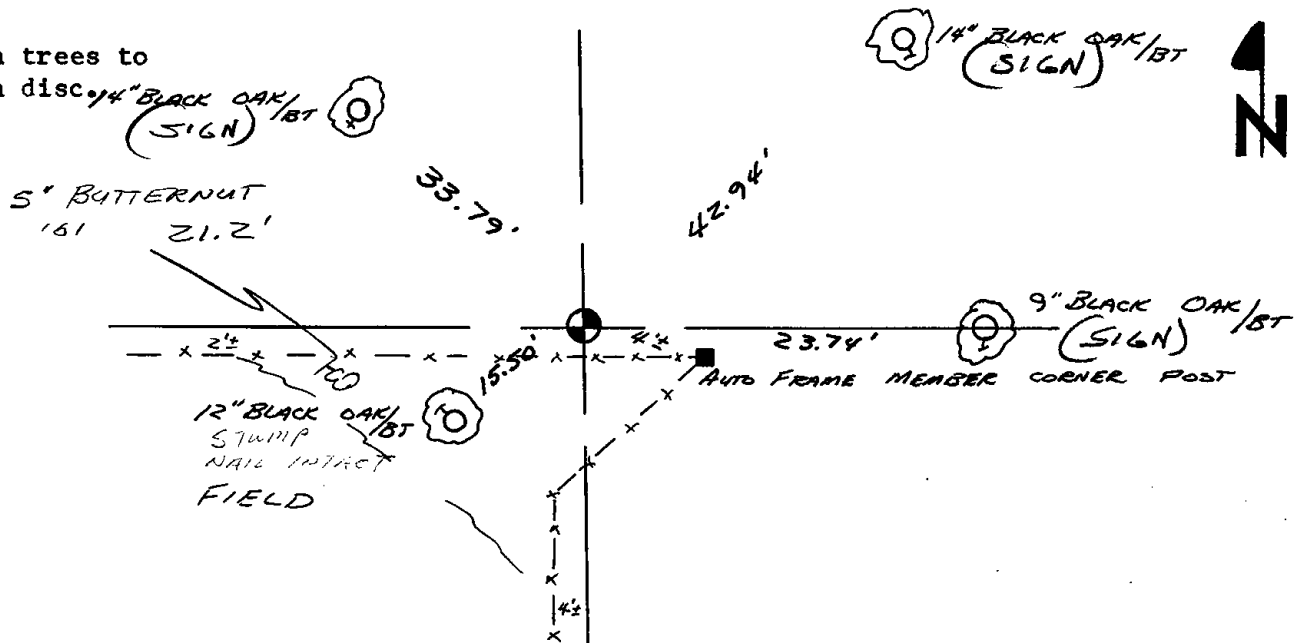
DATE: 6-1-1976

TIE SKETCH

(Show at least four ties)

NOTE:

Ties in trees to nail in disc.



MAINTENANCE RECORD

Date	Init.	Remarks
12-30-81	TH-NJ	MON + TIES O.K
3-3-86	GR-SS	" OK
5-3-91	JG-SS	ALL OK
2-12-96	SS	OK
10-22-01	J.S. -SS	1 NEW TIE
3-1-06	JG	OK