

35  
SECTION

15  
TOWN

07  
RANGE

# ADAMS COUNTY

COUNTY CORNER NO: 119

ROMPORTOL ID: 41507352000

## PUBLIC LAND SURVEY MONUMENT RECORD

TYPE OF MONUMENT: HARRISON  
ADAMS COUNTY COORDINATES, NAD 83 (2007)

N. 135589.082

E. 583643.532

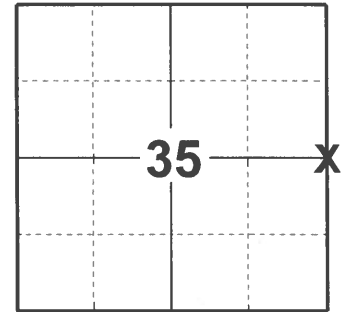
ELEVATION- \_\_\_\_\_ DATUM \_\_\_\_\_

FIELD WORK DATE: 04/19/2021

### BASIS FOR MONUMENT LOCATION

1982 - PLS 1444 FOUND NO EVIDENCE OF ORIGINAL CORNER OR ANY RESURVEY CORNERS. NO INDICATION OF ANY ORIGINAL BEARINGS TREES. CORNER WAS SET EQUIDISTANT AND ON LINE BETWEEN ADJACENT SECTION CORNERS.

2021 - PLS 2675 FOUND HARRISON MONUMENT 2" ABOVE GROUND AND 3 WITNESSES. MONUMENT AGREES WITH ALL 3 WITNESSES. ACCEPTED HARRISON MONUMENT AS THE CORNER LOCATION. SET 4 NEW TIES AND MEASURED TO THE EXISTING WITNESSES.



**LOCATION**

(INDICATE CORNER BY "X")

SEAL:



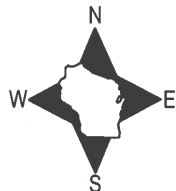
DATA SHOWN HERE ON THIS TIE SHEET IS CORRECT AND COMPLETE TO THE BEST OF MY KNOWLEDGE AND BELIEF.

PROFESSIONAL LAND SURVEYOR

DATE 5/19/21

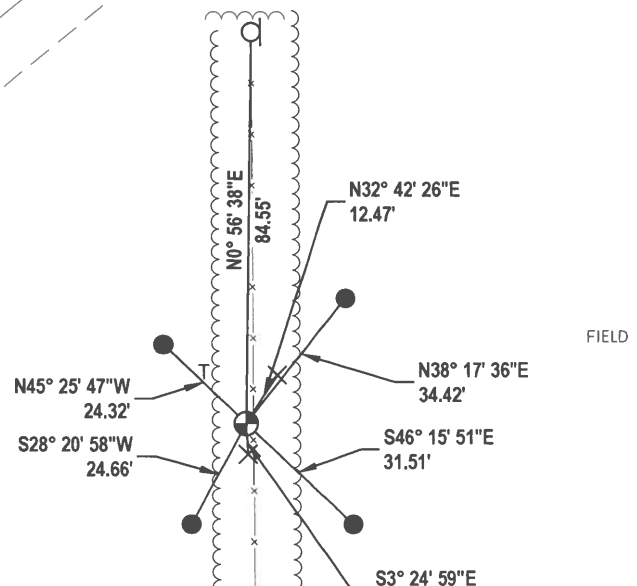
### - TIE SKETCH

NOTE: ALL TIES ARE SET 24" BELOW GROUND SURFACE.



- SET 3/4" x 18" IRON REBAR, 1.50#/FT
- × FOUND WITNESS STONE WITH CHISELED X
- ⊕ FOUND HARRISON MONUMENT
- VINYL "T" POST
- ⊔ FENCE POST

FIELD

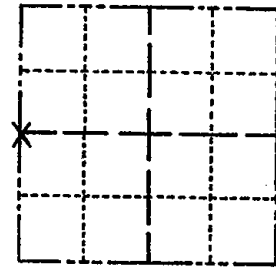


ADAMS COUNTY

Survey Monument Record

TYPE OF MONUMENT: Harrison  
STATE PLANE COORDINATES: N \_\_\_\_\_  
E \_\_\_\_\_  
ELEVATION — M.S.L. DATUM: \_\_\_\_\_  
THETA ANGLE: \_\_\_\_\_  
FIELD BOOK: S-1063 PAGE \_\_\_\_\_

CORNER NO. 514  
SECTION 1  
TOWN 15  
RANGE 7



LOCATION  
(Indicated by 'X')

SEAL:

BASIS FOR MONUMENT LOCATION

(Use reverse side if necessary)

Show info such as: History of corner, with reference to Vol. and pg, dates, surveyor; exact description of monument replaced; if location computed, by taped or EDM traverse; landowner remarks, etc.

CORNER SET AT THE INTERSECTION OF A STRAIGHT LINE BETWEEN NW & SW SECTION CORNERS AND AN EAST-WEST FENCE LINE.

CORNER SET FROM COMPUTED COORDINATES THROUGH AN EXTENSIVE E.D.M. TRAVERSE.

NO OTHER EVIDENCE COULD BE FOUND.

Corner & ties o.k. trees scribed ST 4-1-76 GR-SS  
TOP CORNER TIES o.k. 7-16-85 KEN CARLSON  
ALL OK 4-1-91 GR-JG  
O.K. 3-11-96 SS.  
" 2-28-07 SS  
OK 3-8-06-JG  
3-15-11 SS 3 NEW TIES



CERTIFIED CORRECT:

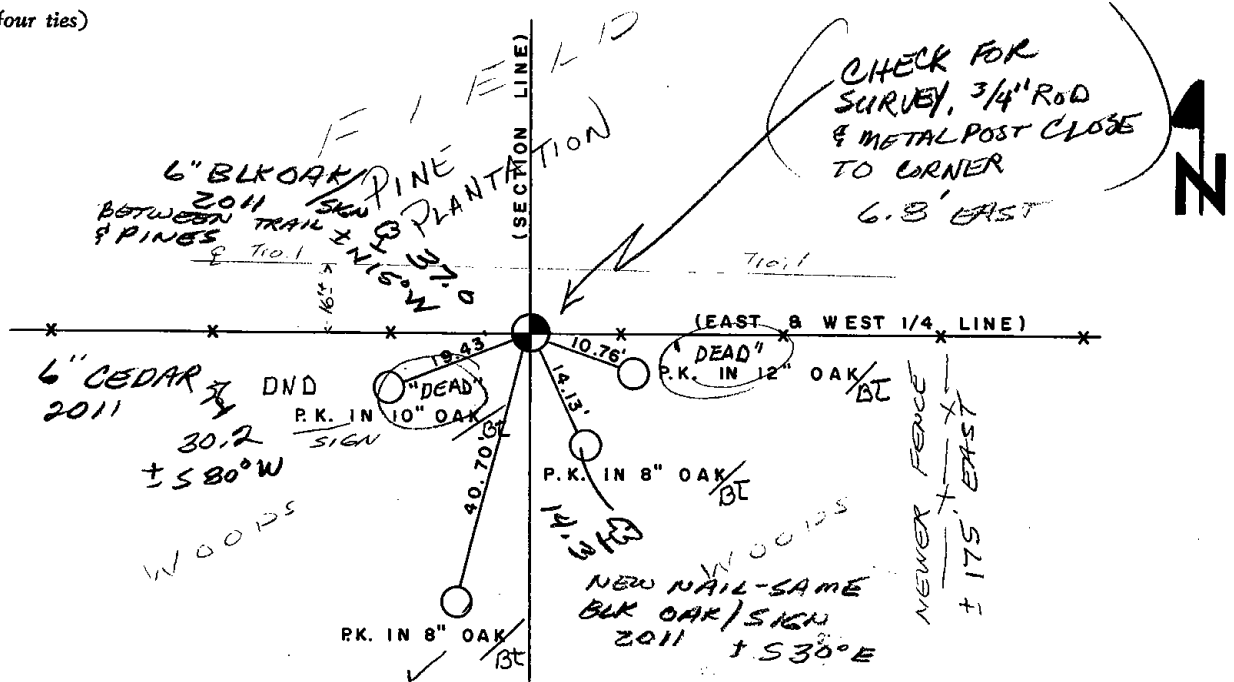
*Dale D. Rice*

Registered Land Surveyor

DATE: 12/13/74

TIE SKETCH

(Show at least four ties)



MAINTENANCE RECORD

Date	Init.	Remarks
9-15-81	LC-NJ	TIES + MON. OK.