

33  
SECTION

15  
TOWN

07  
RANGE

# ADAMS COUNTY

COUNTY CORNER NO: 126  
ROMPORTOL ID: 41507330020

## PUBLIC LAND SURVEY MONUMENT RECORD

TYPE OF MONUMENT: 2-3/8" O.D. IRON PIPE  
ADAMS COUNTY COORDINATES, NAD 83 (2007)

N. 132917.120

E. 570501.384

ELEVATION- \_\_\_\_\_ DATUM \_\_\_\_\_

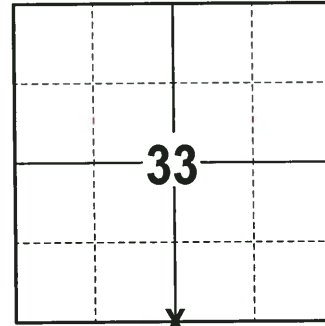
FIELD WORK DATE: 10/31/2017

### BASIS FOR MONUMENT LOCATION

1975 - PLS 1103 RAN EDM/TRANSIT TRAVERSE OF SOUTH AND EAST LINE OF SECTION 33-15-7. COULD FIND NO EVIDENCE OF THE ORIGINAL CORNER, REMONUMENTATION OR ACCESSORY MONUMENTS. THE BEST AVAILABLE EVIDENCE IS THE FENCE CORNER AND IT FIT THE ORIGINAL NOTES AND OCCUPATION WELL. SET A HARRISON MONUMENT AT THE FENCE CORNER AND TIED OUT.

1997 - PLS 606 THE HARRISON MARKER AT THIS LOCATION HAS BEEN TOTALLY OBLITERATED. FOUND 2 OF THE MARKER PIECES AFTER EXCAVATING. SET A 2" X30" IRON PIPE BY COORDINATE VALUE COMPUTATION FROM THE SECTION SUMMARY ON FILE FOR THIS SECTION AND TIED OUT.

2017 - PLS 2994 FOUND A 2-3/8" O.D. IRON PIPE 1" BELOW THE GROUND SURFACE AND 3 WITNESS TREES. THE MONUMENT AGREES WITH THE EXISTING WITNESS TREES. ACCEPTED THE HARRISON MONUMENT AS THE CORNER LOCATION. SET 4 NEW TIES AND MEASURED TO THE TIES AND WITNESS TREES.



LOCATION  
(INDICATE CORNER BY "X")

SEAL:

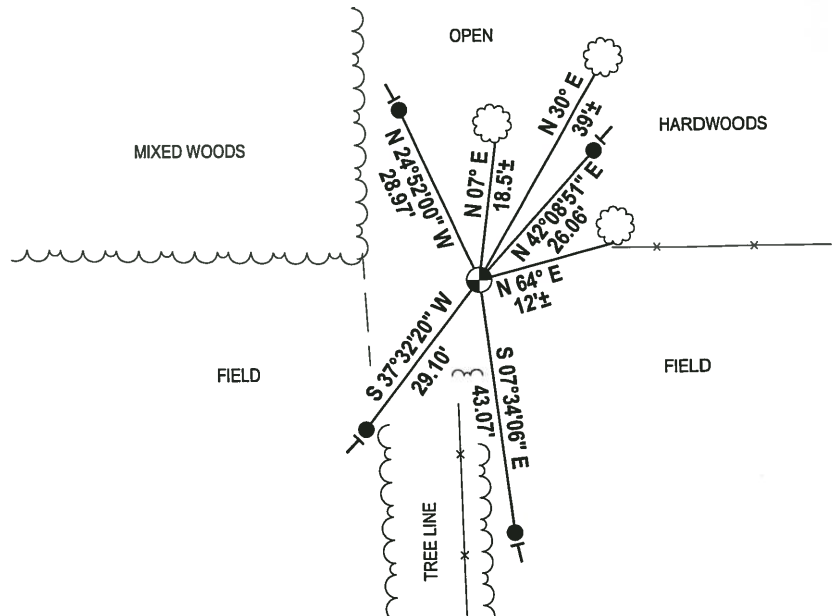
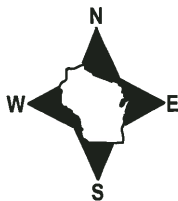


DATA SHOWN HERE ON THIS TIE SHEET IS CORRECT AND COMPLETE TO THE BEST OF MY KNOWLEDGE AND BELIEF.

PROFESSIONAL LAND SURVEYOR

DATE 12-21-17

### TIE SKETCH



- 3/4" x 18" IRON REBAR SET, 1.50#/FT
- ⊙ 2-3/8" O.D. IRON PIPE FOUND
- ┊ VINYL "T" POST
- ☁ WITNESS TREE FOUND

ADAMS COUNTY

Survey Monument Record

TYPE OF MONUMENT: Standard Harrison

STATE PLANE COORDINATES: N \_\_\_\_\_

E \_\_\_\_\_

ELEVATION — M.S.L. DATUM: \_\_\_\_\_

THETA ANGLE: \_\_\_\_\_

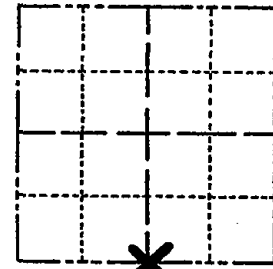
FIELD BOOK: \_\_\_\_\_ PAGE \_\_\_\_\_

CORNER NO. 693<sup>26</sup>

SECTION 33

TOWN 15

RANGE 7



LOCATION  
(Indicated by 'X')

SEAL:

BASIS FOR MONUMENT LOCATION

(Use reverse side if necessary)

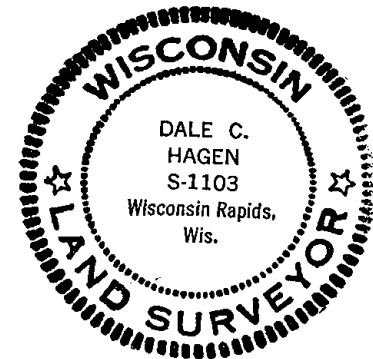
Show info such as: History of corner, with reference to Vol. and pg, dates, surveyor; exact description of monument replaced; if location computed, by taped or EDM traverse; landowner remarks, etc.

Ran EDM/transit traverse of South and East line of Section 33-15-7.

Could find no evidence of the original corner or any remonumentation or accessory monuments.

The best available evidence, the fence corner, fit the original notes and occupation well.

Set corner at fence corner.



CERTIFIED CORRECT

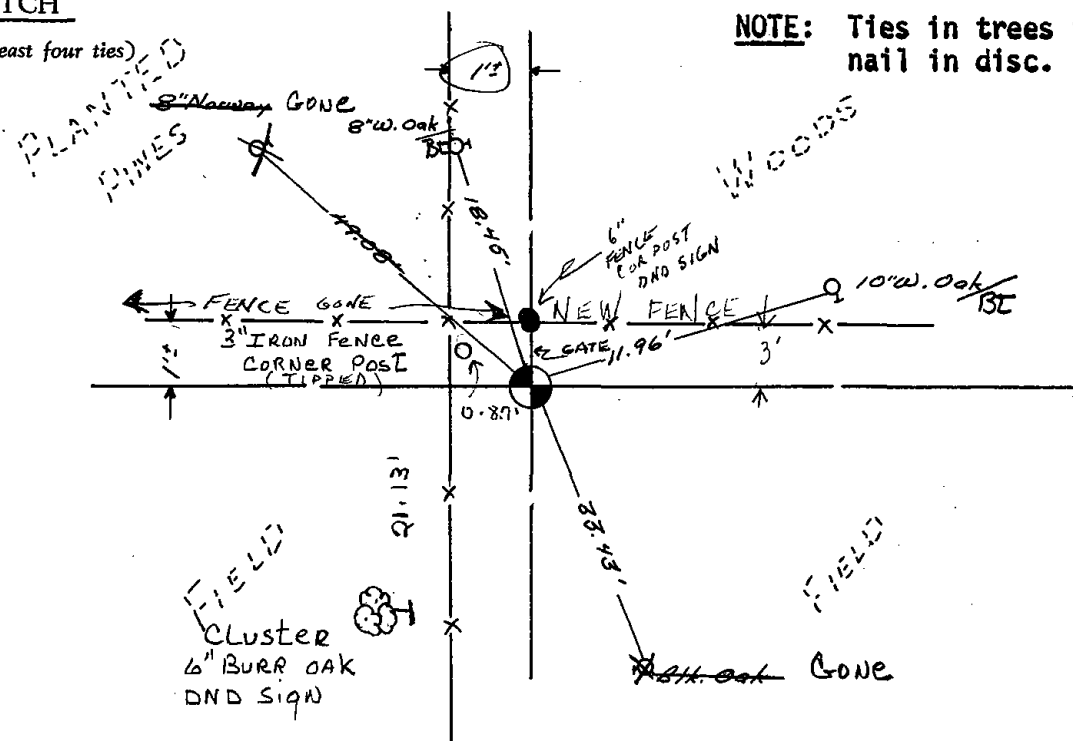
Dale C Hagen  
Registered Land Surveyor

DATE: June 10, 1975

\* (ALSO SEE CARROLL DTD 3/26/97 ON THE BACK)

TIE SKETCH

(Show at least four ties)



NOTE: Ties in trees to nail in disc.



MAINTENANCE RECORD

Date	Id	Remarks
12-28-81	TH-NJ	MON. O.K.
3-3-86	SS	TIES O.K.
5-3-91	SS-IG	ALL OK
11-29-95	SS	TIES OK
2-27-01	JG-AH	OK
12-21-11	MS	OK

CORNER NO. 693  
SECTION 33  
TOWN 15  
RANGE 7E

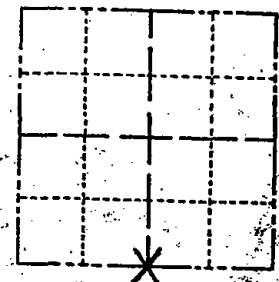
Survey Monument Record

TYPE OF MONUMENT: 2" x 30" Iron Pipe  
STATE PLANE COORDINATES: N \_\_\_\_\_  
E \_\_\_\_\_

ELEVATION — M.S.L. DATUM: \_\_\_\_\_

THETA ANGLE: \_\_\_\_\_

FIELD BOOK: \_\_\_\_\_ PAGE \_\_\_\_\_



LOCATION  
(Indicated by 'X')

SEAL:

BASIS FOR MONUMENT LOCATION

(Use reverse side if necessary)

Show info such as: History of corner, with reference to Vol. and pg. dates, surveyor; exact description of monument replaced; if location computed, by taped or EDM traverse; landowner remarks, etc.

The Harrison marker supposed to be at this location has been totally obliterated by others. In are excavation we found (2) of the marker pieces. This 2" x 30" pipe was set by cordinate value computation from the Section Summary on file for this Section.



OK 1-31-06 - JG

CERTIFIED CORRECT

James J. Carroll  
Registered Land Surveyor

DATE: March 26, 1997

TIE SKETCH

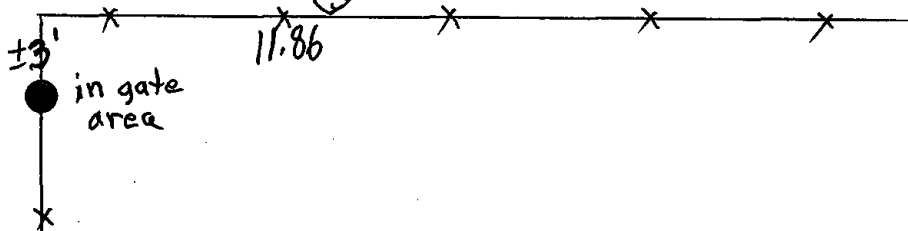
(Show at least four ties)

all ties are spike nails

12" Burr Oak old tree spike  
10" red Oak  
38.82

18.51

17" Burr Oak



12" Burr Oak in a spike 21.88



