

33
SECTION

15
TOWN

07
RANGE

ADAMS COUNTY

COUNTY CORNER NO: 127
ROMPORTOL ID: 41507330000

PUBLIC LAND SURVEY MONUMENT RECORD

TYPE OF MONUMENT: HARRISON (BROKEN TOP)
ADAMS COUNTY COORDINATES, NAD 83 (2007)

N. 132917.204

E. 573136.175

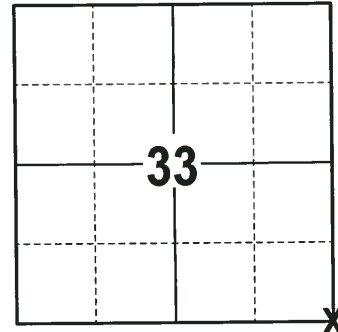
ELEVATION- _____ DATUM _____

FIELD WORK DATE: 10/31/2017

BASIS FOR MONUMENT LOCATION

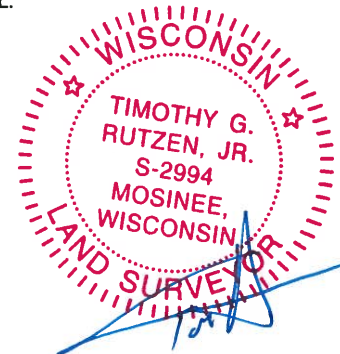
1975 - PLS 1103 RAN EDM/TRANSIT TRAVERSE OF SOUTH AND EAST LINE OF SECTION 33-15-7. COULD FIND NO EVIDENCE OF THE ORIGINAL CORNER OR ANY REMONUMENTATION OR ACCESSORY MONUMENTS. SET CORNER BY DOUBLING OVER THE LINE FROM THE SOUTHWEST CORNER TO THE SOUTH QUARTER CORNER. SET A STANDARD HARRISON MONUMENT AT THE CORNER LOCATION AND TIED OUT.

2017 - PLS 2994 FOUND A HARRISON MONUMENT WITH THE TOP BROKEN 24" BELOW THE SURFACE. NO TIES OR WITNESSES WERE FOUND. ACCEPTED THE HARRISON MONUMENT WITH A BROKEN TOP AS THE CORNER LOCATION. SET 4 NEW TIES AND MEASURED TO THE TIES.



LOCATION
(INDICATE CORNER BY "X")

SEAL:



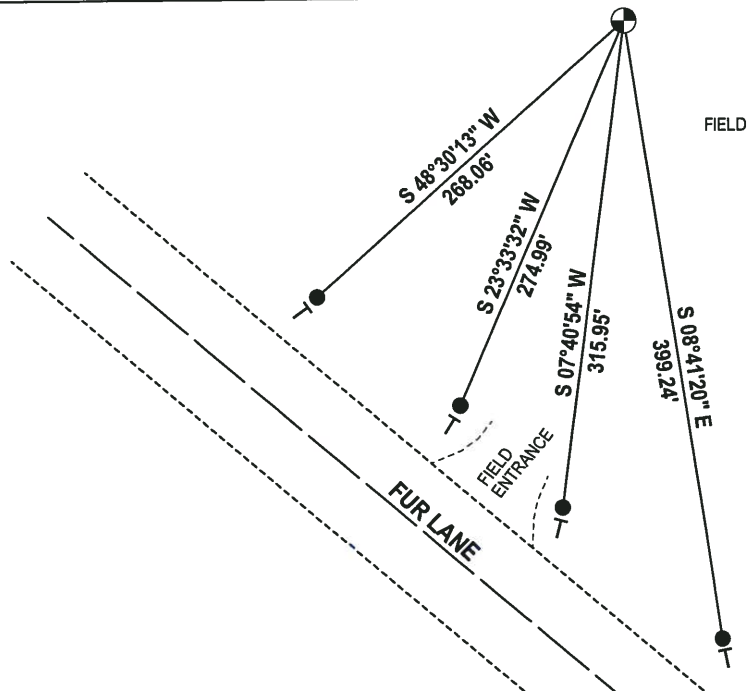
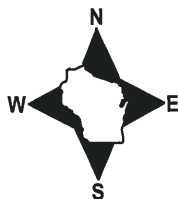
DATA SHOWN HERE ON THIS TIE SHEET IS CORRECT AND COMPLETE TO THE BEST OF MY KNOWLEDGE AND BELIEF.

PROFESSIONAL LAND SURVEYOR

DATE 12-21-17

TIE SKETCH

NOTE: THE CORNER FALLS 289± NORTH-EAST OF THE CENTERLINE OF FUR LANE.



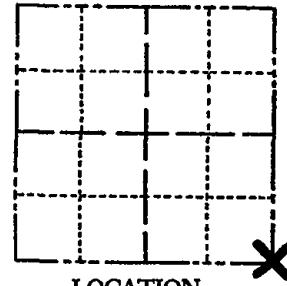
- 3/4" x 18" IRON REBAR SET, 1.50#/FT
- ⊕ HARRISON (BROKEN TOP) FOUND
- VINYL "T" POST

ADAMS COUNTY

Survey Monument Record

TYPE OF MONUMENT: Standard Harrison
 STATE PLANE COORDINATES: N _____
 E _____
 ELEVATION — M.S.L. DATUM: _____
 THETA ANGLE: _____
 FIELD BOOK: _____ PAGE _____

CORNER NO. 692
 SECTION 33
 TOWN 15
 RANGE 7



LOCATION
(Indicated by 'X')

SEAL:

BASIS FOR MONUMENT LOCATION

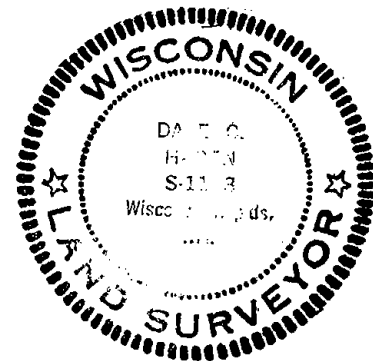
(Use reverse side if necessary)

Show info such as: History of corner, with reference to Vol. and pg, dates, surveyor; exact description of monument replaced; if location computed, by taped or EDM traverse; landowner remarks, etc.

Ran EDM/transit traverse of South and East line of Section 33-15-7.

Could find no evidence of the original corner or any remonumentation or accessory monuments.

Set corner by doubling over line from Southwest corner to South Quarter corner.



TIES O.K. 2-3-86 GR-SS
 TIES OK 5-3-91 - JG-SS
 " " 11-29-95 - SS
 " " 2-26-01 - JG
 " " 1-31-06 - JG
 1 GONG 12-21-11 MS

CERTIFIED CORRECT:

Dale C Hayen
 Registered Land Surveyor

DATE: June 10, 1975

TIE SKETCH

(Show at least four ties)

NOTE: Ties in trees to nail in disc.

