

32  
SECTION

17  
TOWN

05  
RANGE

# ADAMS COUNTY

COUNTY CORNER NO: 124

ROMPORTOL ID: 41705320020

## PUBLIC LAND SURVEY MONUMENT RECORD

TYPE OF MONUMENT: HARRISON  
ADAMS COUNTY COORDINATES, NAD 83 (2007)

N. 192088.671

E. 502033.894

ELEVATION- \_\_\_\_\_ DATUM \_\_\_\_\_

FIELD WORK DATE: 01/03/2018

### BASIS FOR MONUMENT LOCATION

1981 - PLS 1444 THIS CORNER WAS SET EQUIDISTANT AND ON A STRAIGHT LINE BETWEEN SECTION CORNERS. FOUND NO EVIDENCE FROM THE ORIGINAL CORNER OR ANY RESURVEYS. SET A HARRISON MONUMENT AT THE CORNER LOCATION AND TIED OUT.

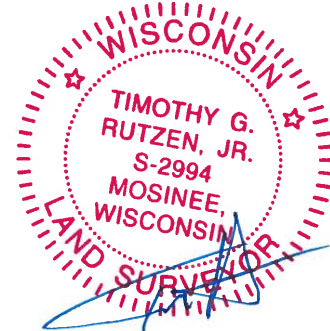
2005 - PLS (UNKNOWN) VERIFIED THE CORNER LOCATION AND RE-TIED.

2017 - PLS 2994 FOUND A HARRISON MONUMENT 2" ABOVE THE GROUND SURFACE AND 1 WITNESS TREE. THE MONUMENT AGREES WITH THE EXISTING WITNESS TREE. ACCEPTED THE HARRISON MONUMENT AS THE CORNER LOCATION. SET 4 NEW TIES AND MEASURED TO THE TIES AND WITNESS TREE.



**LOCATION**  
(INDICATE CORNER BY "X")

SEAL:

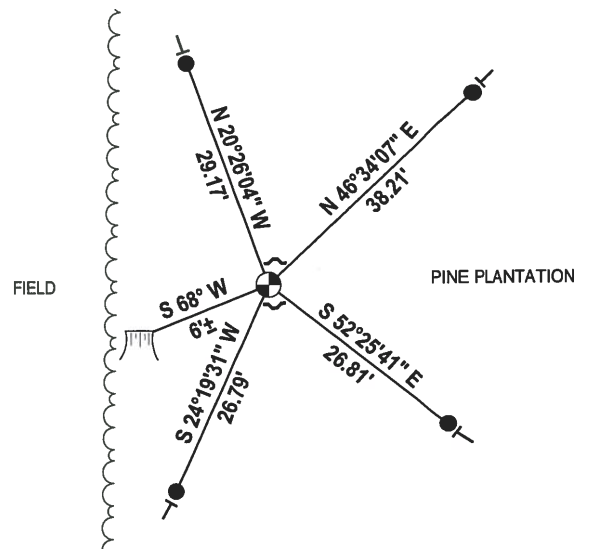
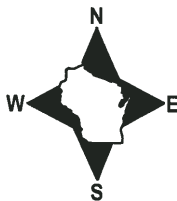


DATA SHOWN HERE ON THIS TIE SHEET IS CORRECT AND COMPLETE TO THE BEST OF MY KNOWLEDGE AND BELIEF.

PROFESSIONAL LAND SURVEYOR

DATE 2-2-18

### - TIE SKETCH

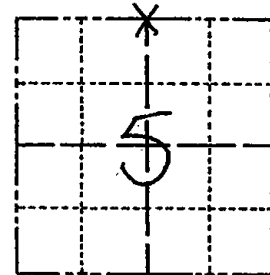


- 3/4" x 18" IRON REBAR SET, 1.50#/FT
- ⊕ HARRISON FOUND
- ↙ STEEL FENCE POST
- VINYL "T" POST
- ⌋ WITNESS TREE FOUND

# Government Land Corner Certificate

ADAMS County  
 TYPE OF MONUMENT: HARRISON  
 STATE PLANE COORDINATES: N \_\_\_\_\_  
 E \_\_\_\_\_  
 ELEVATION — M.S.L. DATUM: \_\_\_\_\_  
 THETA ANGLE: \_\_\_\_\_  
 FIELD BOOK: 86 PAGE 119  
 DRAWN BY: UJ

CORNER NO. 4  
 SECTION 5  
 TOWN 16  
 RANGE 5



LOCATION  
(Indicated by 'X')

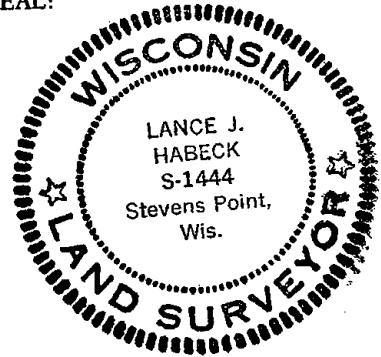
## BASIS FOR MONUMENT LOCATION

Show info such as: History of corner, with reference to Vol. and pg., dates, surveyor; exact description of monument replaced; if location computed, by taped or EDM traverse; landowner remarks, etc. (Use reverse side if necessary)

This corner was set equidistant and on a straight line between section corners. No evidence of the original corner or any resurvey corner was found.

- 1-GONE, 1-NEW 7-10-90 JG, SS
- 1-GONE, 2-NEW 1-11-95 JG-SS
- 2-GONE, 2-NEW, 4-11-00 - JG
- RETIED ON BACK 10-31-05 - JG

SEAL:



DATA SHOWN HERE ON  
CERTIFIED CORRECT:

*Lance J. Habeck*  
Registered Land Surveyor

DATE: 1/6/81

## TIE SKETCH

Show at least four ties, also fence lines, roads, topo, size and type of 'witness trees' and if off road - best way to arrive at corner.

(TAKE WOODS TRAIL OFF CTY "Z"  
IN CUT OFF AREA, STAY TO THE  
RIGHT.)

