

## PUBLIC LAND SURVEY MONUMENT RECORD

TYPE OF MONUMENT: HARRISON  
 ADAMS COUNTY COORDINATES, NAD 83 (2007)

N. 192229.940

E. 509935.309

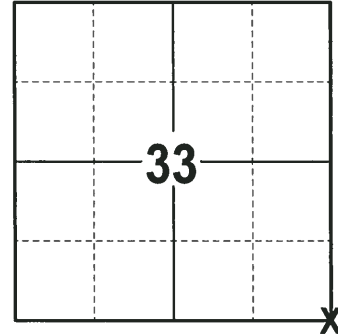
ELEVATION-      DATUM     

FIELD WORK DATE: 01/03/2018

### BASIS FOR MONUMENT LOCATION

1980 - PLS 1432 CALCULATED POSITION BY SINGLE PROPORTIONING (BASED ON ORIGINAL DISTANCES) ALONG THE TOWNSHIP LINE BETWEEN THE N1/4 OF SECTION 4 AND THE NE OF SECTION 3. THERE IS A BEARING TREE SE OF THE CALCULATED POSITION. NO RECORD OF IT. IT FACES TO A POSITION ABOUT 100' EAST OF THE CALCULATED POSITION. SET A HARRISON MONUMENT AT THE CALCULATED LOCATION AND TIED OUT.

2017 - PLS 2994 FOUND A HARRISON MONUMENT 2" ABOVE THE GROUND SURFACE AND 1 WITNESS TREE. THE MONUMENT AGREES WITH THE EXISTING WITNESS TREE. ACCEPTED THE HARRISON MONUMENT AS THE CORNER LOCATION. SET 4 NEW TIES AND MEASURED TO THE TIES AND WITNESS TREE.



**LOCATION**  
 (INDICATE CORNER BY "X")

SEAL:



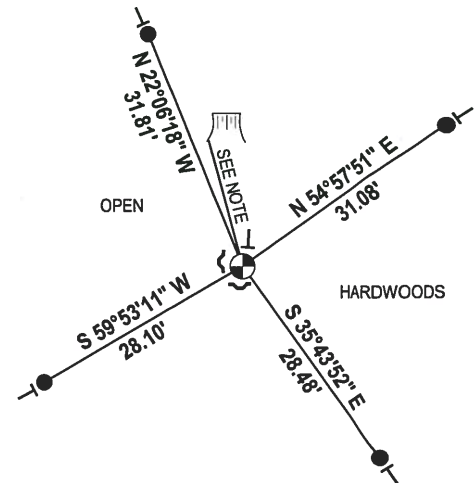
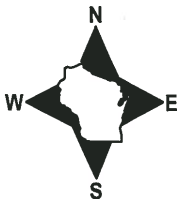
DATA SHOWN HERE ON THIS TIE SHEET IS CORRECT AND COMPLETE TO THE BEST OF MY KNOWLEDGE AND BELIEF.

PROFESSIONAL LAND SURVEYOR

DATE 2-2-18

### - TIE SKETCH

NOTE: WITNESS TREE STUMP FALLS N15°W, 7'±.



- 3/4" x 18" IRON REBAR SET, 1.50#/FT
- ⊙ HARRISON FOUND
- ✓ STEEL FENCE POST
- VINYL "T" POST
- ⌋ WITNESS TREE STUMP FOUND

# Government Land Corner Certificate

ADAMS County

TYPE OF MONUMENT: Harrison Cast Iron

STATE PLANE COORDINATES: N \_\_\_\_\_  
E \_\_\_\_\_

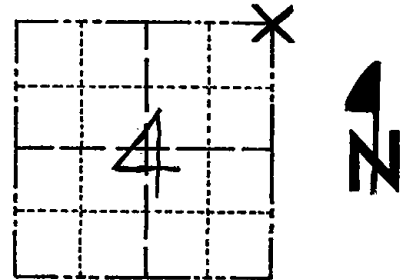
ELEVATION — M.S.L. DATUM: \_\_\_\_\_

THETA ANGLE: \_\_\_\_\_

FIELD BOOK: Project folder PAGE \_\_\_\_\_

DRAWN BY: Marvin Seymour

CORNER NO. 7  
SECTION 4  
TOWN 16  
RANGE 5



LOCATION  
(Indicated by 'X')

## BASIS FOR MONUMENT LOCATION

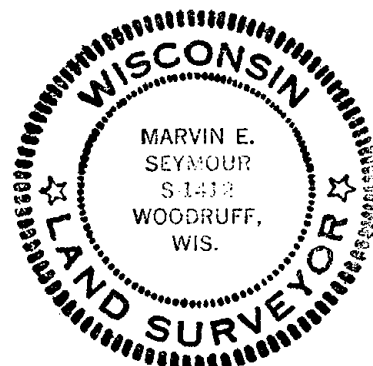
Show info such as: History of corner, with reference to Vol. and pg., dates, surveyor; exact description of monument replaced; if location computed, by taped or EDM traverse; landowner remarks, etc. (Use reverse side if necessary)

Set by single proportioning (based on original distances) along the township line between N<sup>1</sup>/<sub>4</sub> Sec. 4 and NE <sup>3</sup>/<sub>4</sub>.

There is a bearing tree SE of where corner is now set. No record of it. It faces to a position about 100' east of set corner location.

ALL OK 9-5-90 SS-JG  
ALL OK 1-3-06-JG  
OK NOV 2010 SS

SEAL:



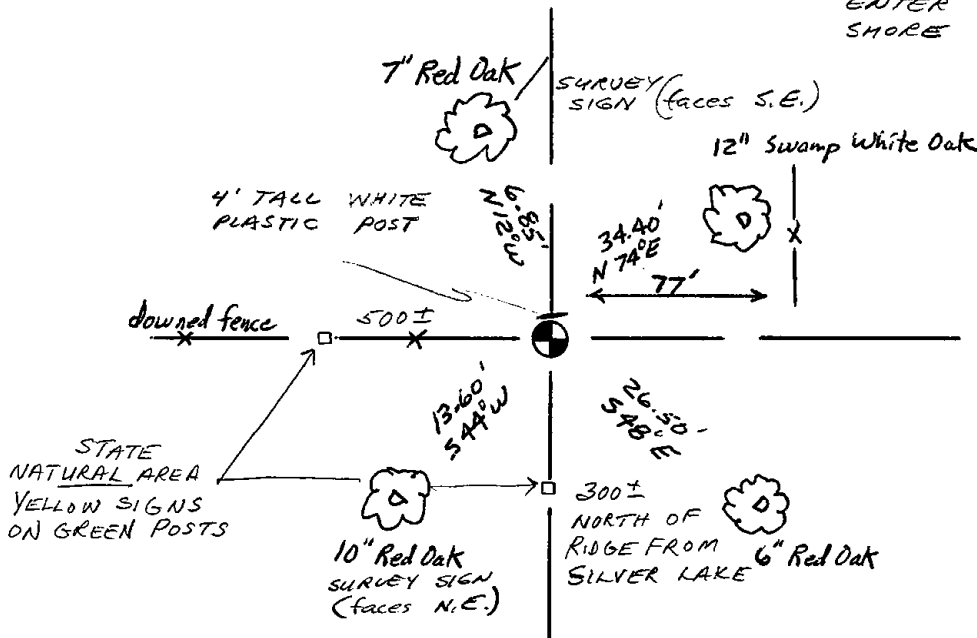
DATA SHOWN HERE ON  
CERTIFIED CORRECT:

Marvin E. Seymour  
Registered Land Surveyor

DATE: August 18, 1980

## TIE SKETCH

Show at least four ties, also fence lines, roads, topo, size and type of witness trees and if off road - best way to arrive at corner.



NOTE: CORNER NEAR TOP OF HILL - 100'± S.W. FROM HIGHEST POINT  
AERIAL PHOTO MOST HELPFUL ENTER BY RIDGE ON NORTH SHORE OF SILVER LAKE

