

ADAMS COUNTY

Survey Monument Record

TYPE OF MONUMENT: 1 1/2" x 48" Iron Pipe in Creek

STATE PLANE COORDINATES: N _____

E _____

ELEVATION — M.S.L. DATUM: _____

THETA ANGLE: _____

FIELD BOOK: 38 PAGE 16

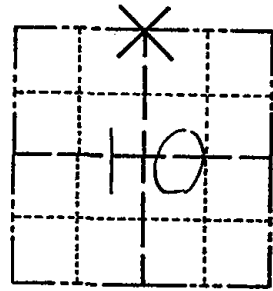
CORNER NO. 28

SECTION 10

TOWN 16

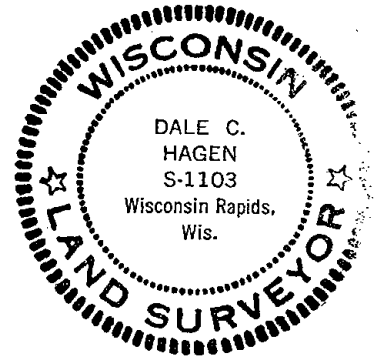
RANGE 5

28



LOCATION
(Indicated by 'X')

SEAL:



BASIS FOR MONUMENT LOCATION

(Use reverse side if necessary)

Show info such as: History of corner, with reference to Vol. and pg, dates, surveyor; exact description of monument replaced; if location computed, by taped or EDM traverse; landowner remarks, etc.

Ran EDM/T2 traverse around Sections 8, 9, 10, 11 and 12 to determine search areas.

Investigation yielded the remains of a 8" diameter by 8 foot long pointed wood post driven in Duck Creek.

In County Surveyor Field Book 3, Pages 5-13, M.C. Smith calls for this post to fall in Duck Creek.

Relocated corner at record distance from Black Oak bearing tree to the Northwest and on down fenceline. Corner falls within 1 foot of end of down post in creek.

Set witness pipe as very little adequate bearing trees are available.

Set 1 1/2" x 48" Iron Pipe for corner on 10-5-76.

CERTIFIED CORRECT:

Dale C. Hagen
Registered Land Surveyor

DATE: 11-30-76

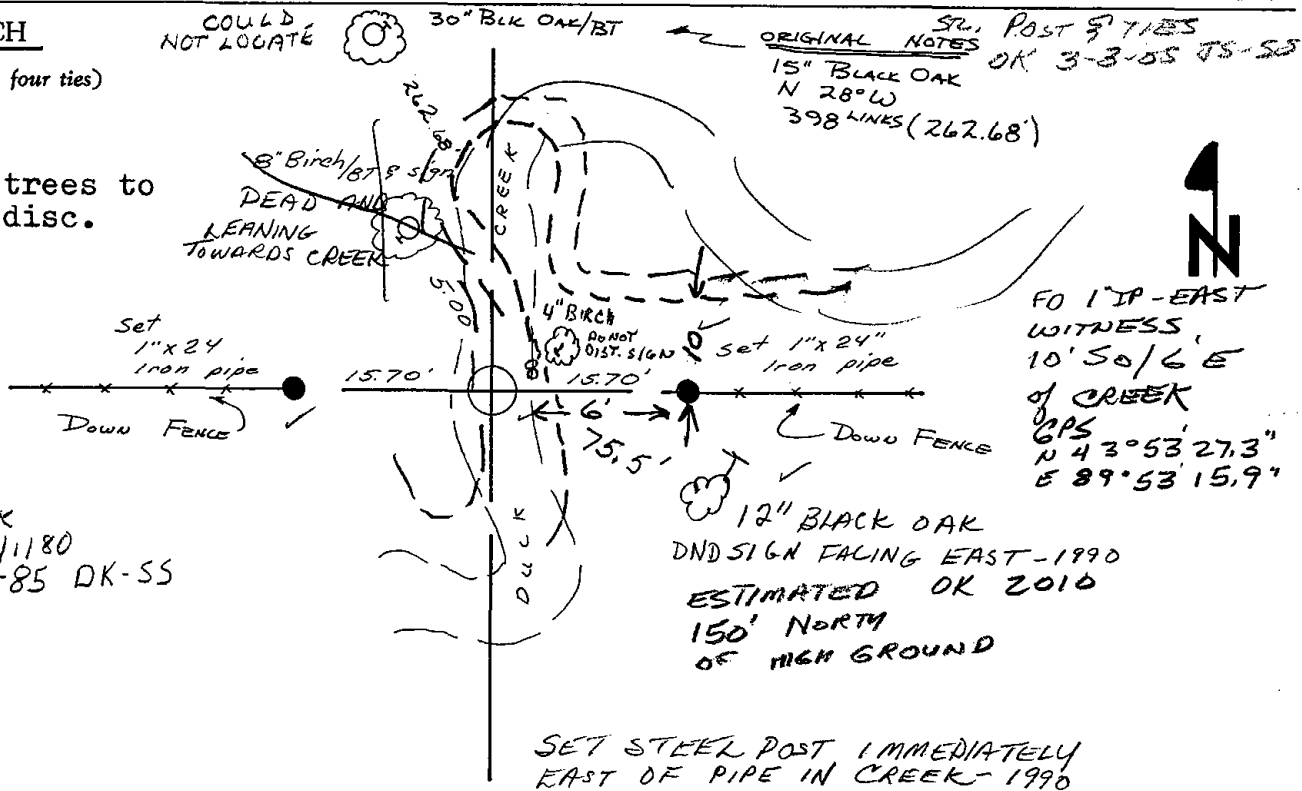
1-NEW 10-490 JG-SS ALL OK 1-11-95 JG-SS DATE: 11-30-76 MLOK 2-10-00TWSS

TIE SKETCH

(Show at least four ties)

NOTE

Ties in trees to nail in disc.



CORNER OK
KV-SK 10/1180
OK-7-23-85 DK-SS