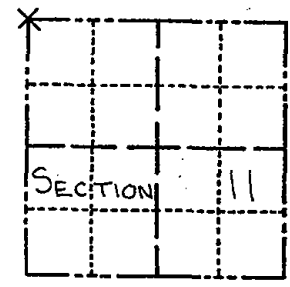


ADAMS COUNTY
Survey Monument Record

CORNER NO. 473
 SECTION 11
 TOWN 16 N
 RANGE 5E

TYPE OF MONUMENT: ADAMS COUNTY
 STATE PLANE COORDINATES: N 43° 53' 26.4"
HAND HELD GPS E 089° 52' 40.3"
 ELEVATION — M.S.L. DATUM: _____
 THETA ANGLE: _____
 FIELD BOOK: _____ PAGE _____



LOCATION
 (Indicated by 'X')

BASIS FOR MONUMENT LOCATION

(Use reverse side if necessary)
 Show info such as: History of corner, with reference to Vol. and pg, dates, surveyor; exact description of monument replaced; if location computed, by taped or EDM traverse; landowner remarks, etc.
 THIS CORNER WAS RE-SET FROM THE REMAINS OF THE TWO ORIGINAL GOVERNMENT BEARING TREES.

SEAL:

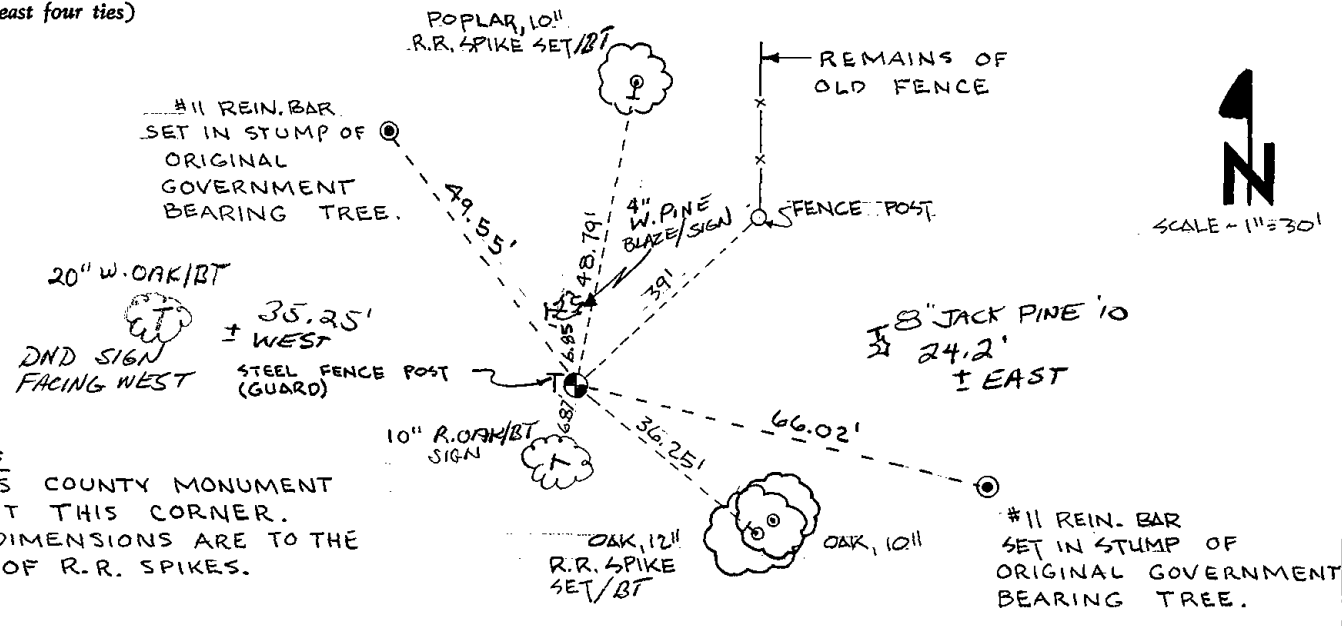


CORNER O.K. 11-11-75 D.M - S.S.
 MON OK - RETIED 1/13/81 RN-SK
 OK - 7/23/85 DK-SS
 ALL OK 9-5-90 JG-SS
 ALL OK 1-11-95 JG-SS
 1-NEW, 1-3-06 JG

CERTIFIED CORRECT:
Donald L. Paulson
 Registered Land Surveyor
 DATE: JULY 26, 1974

TIE SKETCH 1 NEW TIE 12-08-10 SS

(Show at least four ties)



NOTES:
 1. ADAMS COUNTY MONUMENT SET AT THIS CORNER.
 2. ALL DIMENSIONS ARE TO THE FACE OF R.R. SPIKES.