

07
SECTION

16
TOWN

05
RANGE

ADAMS COUNTY

COUNTY CORNER NO: 35

ROMPORTOL ID: 41605072000

PUBLIC LAND SURVEY MONUMENT RECORD

TYPE OF MONUMENT: HARRISON
ADAMS COUNTY COORDINATES, NAD 83 (2007)

N. 188498.856

E. 499299.168

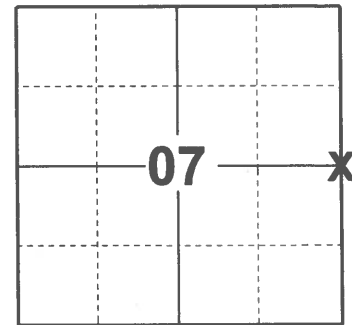
ELEVATION- _____ DATUM _____

FIELD WORK DATE: 01/13/2021

BASIS FOR MONUMENT LOCATION

1972 - PLS 981 SET MONUMENT ON MAY 11, 1972 BY SAM T. MULLEN R.L.S. 981

2021 - PLS 2675 FOUND HARRISON MONUMENT 6"± BELOW THE ROAD SURFACE AND 1 TIE. THE MONUMENT AGREES WITH THE EXISTING TIE. ACCEPTED THE HARRISON AS THE CORNER LOCATION. SET 3 NEW TIES, MEASURED TO 2 FOUND RIGHT OF WAY IRONS, AND THE EXISTING TIE.



LOCATION

(INDICATE CORNER BY "X")

SEAL:



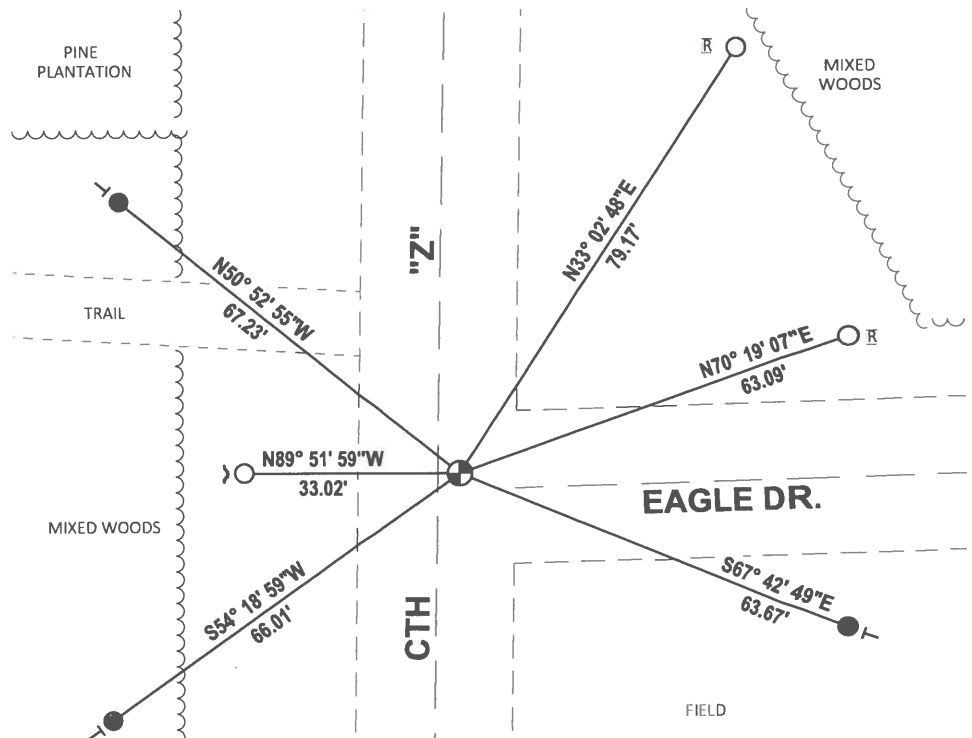
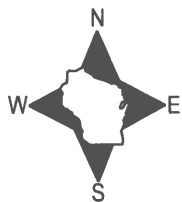
DATA SHOWN HERE ON THIS TIE SHEET IS CORRECT AND COMPLETE TO THE BEST OF MY KNOWLEDGE AND BELIEF.

PROFESSIONAL LAND SURVEYOR

DATE 2/23/2021

TIE SKETCH

NOTE: THE CORNER LANDS 3'± EAST OF CENTERLINE OF CTH "Z".



- SET 3/4" x 18" IRON REBAR, 1.50#/FT
- FOUND 3/4" IRON ROD
- ⊕ FOUND HARRISON MONUMENT
- ~ STEEL FENCE POST
- VINYL "T" POST
- ⊠ RIGHT OF WAY POST

Section 7 Town 16 Range 5

County Corner No. 35

Romportol ID 41605072000

ADAMS COUNTY

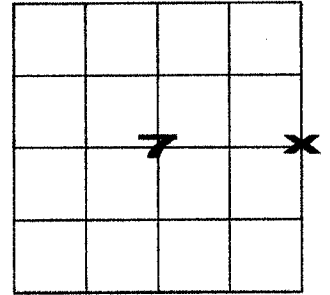
PUBLIC LAND SURVEY MONUMENT RECORD

Type of Monument Bernten Survey Nail

Adams County Coordinates (NAD 83, 2007)

Northing 188498.856

Easting 499299.168



Corner History and Basis for Location

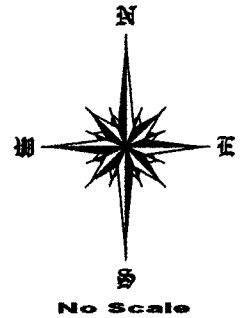
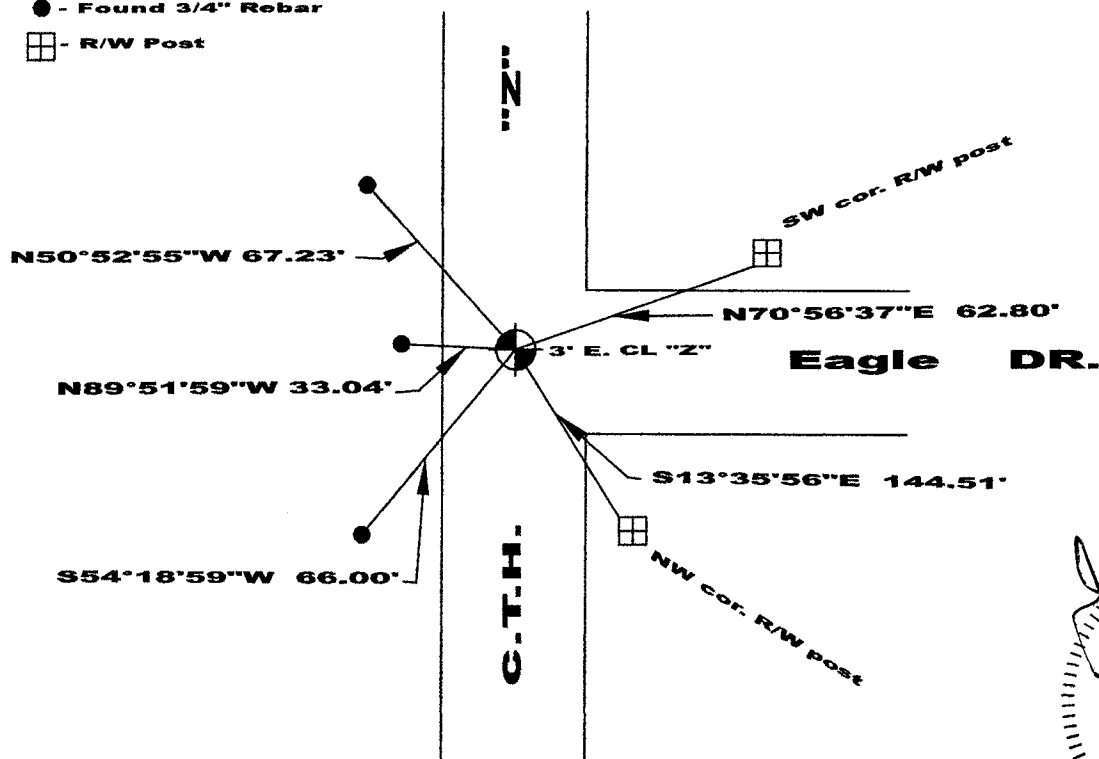
1972 - PLS 981 set a Harrison monument.

2021 - PLS 2675 found and excepted Harrison monument and set three new ties.

2022 - PLS 1739 placed a Berntsen Survey nail at the previously established location and measured to references as shown below. Harrison monument and ties destroyed due to road construction.

● - Found 3/4" Rebar

□ - R/W Post



Jerol M. Smart
 WISCONSIN
 Jerol M. Smart
 S-1739
 Montello
 WI
 LAND SURVEYOR
 DEC. 22, 2022

I, Jerol M. Smart, P.L.S., Adams County Surveyor, do hereby certify that the information shown hereon is correct and that I have fully complied with Wisconsin Statutes and Admin. code to the best of my knowledge and belief.

ADAMS COUNTY

Survey Monument Record

TYPE OF MONUMENT: 30" Harrison

STATE PLANE COORDINATES: N _____

E _____

ELEVATION — M.S.L. DATUM: _____

THETA ANGLE: _____

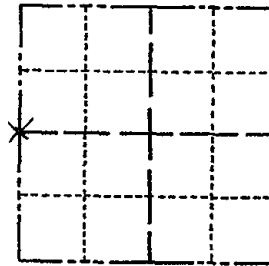
FIELD BOOK: 103 PAGE 126

CORNER NO. 126

SECTION 8

TOWN 16

RANGE 5



LOCATION
(Indicated by 'X')

SEAL:

BASIS FOR MONUMENT LOCATION

(Use reverse side if necessary)

Show info such as: History of corner, with reference to Vol. and pg, dates, surveyor; exact description of monument replaced; if location computed, by taped or EDM traverse; landowner remarks, etc.

Set monument on may 11, 1972 by Sam T. Mullen R.L.S. 981

FO MAG NAIL - TIES OK 10-26-10 SS

NO BEEPS ONLY 1 TIE KU-SK 10/1/80

TOW PRODU OFF. 100228 WAD

ALL OK 4/15/85 DK

CERTIFIED CORRECT:

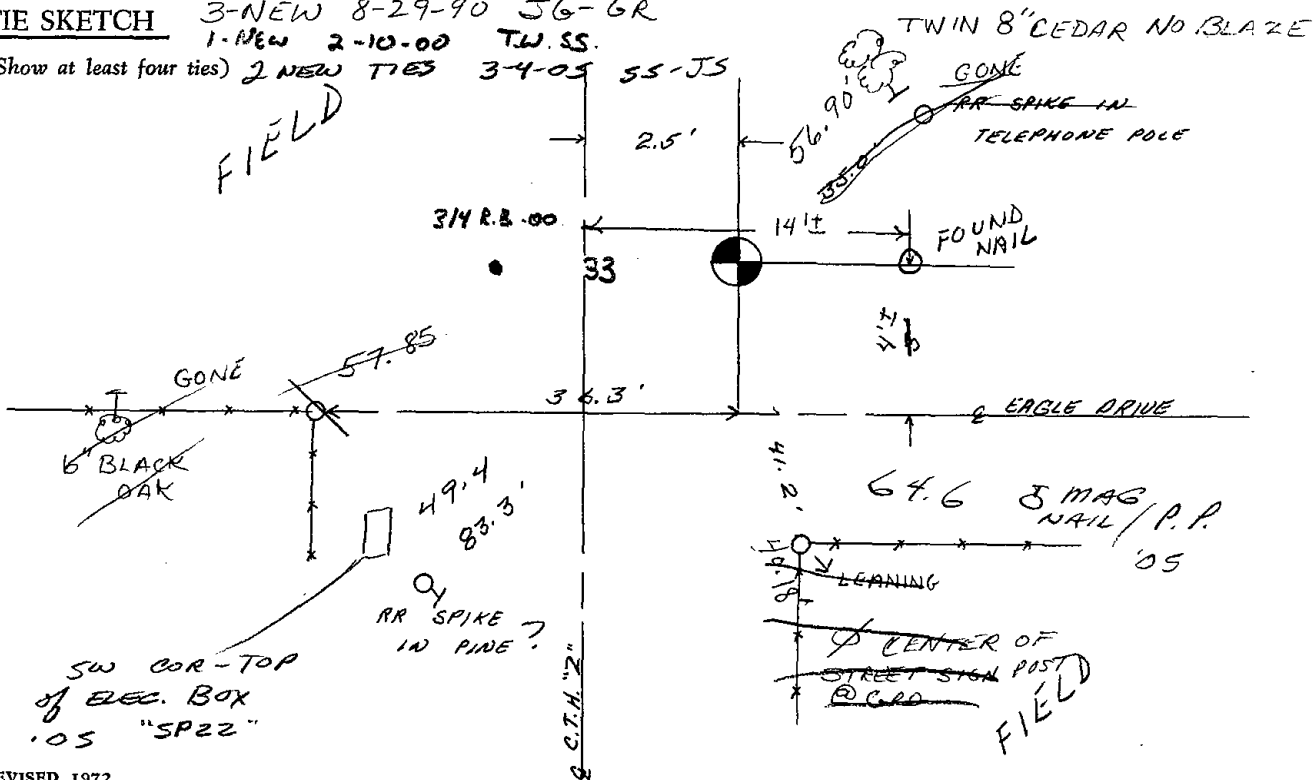
Registered Land Surveyor

DATE: _____

TIE SKETCH 3-NEW 8-29-90 56-GR

1-NEW 2-10-00 T.W.SS.

(Show at least four ties) 2-NEW TIES 3-4-05 55-JS



CENTER OF SECTION

ADAMS COUNTY

Survey Monument Record

TYPE OF MONUMENT: 1"x24" 1.68#/ft iron pipe

STATE PLANE COORDINATES: N _____

E _____

ELEVATION — M.S.L. DATUM: _____

THETA ANGLE: _____

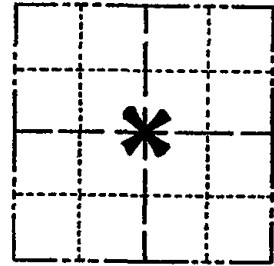
FIELD BOOK: File PAGE _____

CORNER NO. _____

SECTION 8

TOWN 16

RANGE 5



LOCATION
(Indicated by 'X')

SEAL:



BASIS FOR MONUMENT LOCATION

(Use reverse side if necessary)

Show info such as: History of corner, with reference to Vol. and pg, dates, surveyor; exact description of monument replaced; if location computed, by taped or EDM traverse; landowner remarks, etc.

Excavated with backhoe. Found 6x8" top, 8x15" bottom, 14" High sandstone. Matches distance and direction to bearing tree of record. Stone called for per County surveyor records, Vol. 1, Page 101.

Lowered stone and set pipe on top.

ALL OK 2-10-00-TW.SS.

" 3-4-05 JS-SS

CERTIFIED CORRECT:

Anthony B. Kiedrowski
Registered Land Surveyor

DATE: 8/26/76

TIE SKETCH

(Show at least four ties)

NOTE:

Ties in trees to nail in disc.

