

## PUBLIC LAND SURVEY MONUMENT RECORD

TYPE OF MONUMENT: 1-1/4" O.D. IRON PIPE  
ADAMS COUNTY COORDINATES, NAD 83 (2007)

N. 188543.455

E. 501996.315

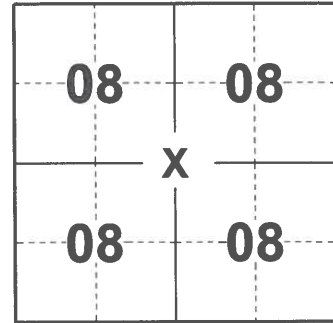
ELEVATION- - - - - DATUM - - - - -

FIELD WORK DATE: 01/25/2021

### BASIS FOR MONUMENT LOCATION

1976 - PLS 878 EXCAVATED WITH BACKHOE. FOUND 6"X8" TOP, 8"X15" BOTTOM, 14" HIGH SANDSTONE. MATCHES DISTANCE AND DIRECTION TO BEARING TREE OF RECORD. STONE CALLED FOR PER COUNTY SURVEYOR RECORDS, VOL. 1, PAGE 101. LOWERED STONE AND SET PIPE ON TOP.

2021 - PLS 2675 FOUND 1-1/4" O.D. IRON PIPE 2± BELOW THE ROAD SURFACE AND 2 WITNESSES. THE MONUMENT AGREES WITH BOTH WITNESSES. ACCEPTED THE 1-1/4" O.D. IRON PIPE AS THE CORNER LOCATION. SET 4 NEW TIES AND MEASURED TO THE EXISTING WITNESSES.



LOCATION  
(INDICATE CORNER BY "X")

SEAL:



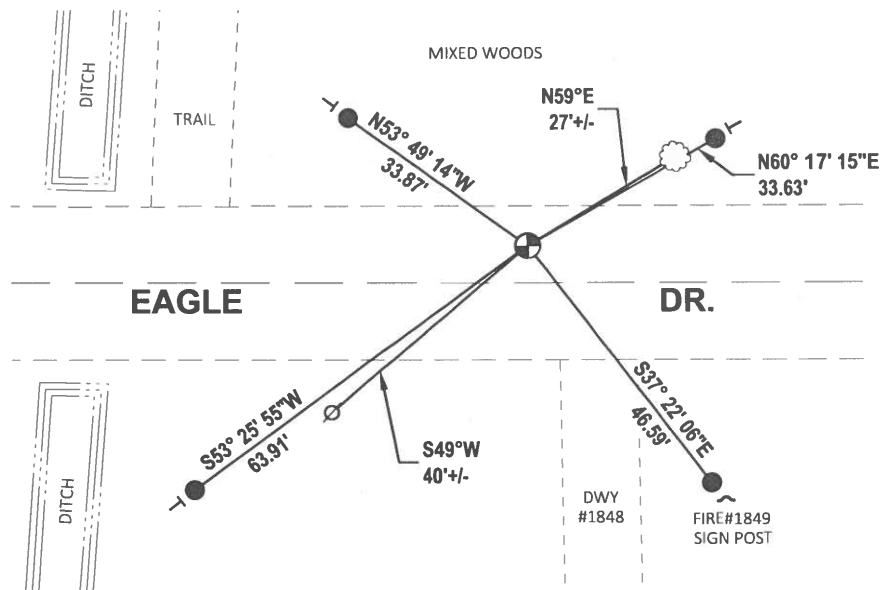
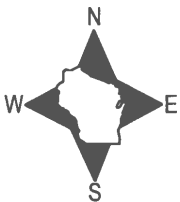
DATA SHOWN HERE ON THIS TIE SHEET IS CORRECT AND COMPLETE TO THE BEST OF MY KNOWLEDGE AND BELIEF.

PROFESSIONAL LAND SURVEYOR

DATE 2/23/2021

### - TIE SKETCH -

NOTE: THE CORNER LANDS 6± NORTH OF CENTERLINE OF EAGLE DR.



- SET 3/4" x 18" IRON REBAR, 1.50#/FT
- ⊕ FOUND 1-1/4" O.D. IRON PIPE
- ⊘ WITNESS POWER POLE
- ~ STEEL FENCE POST
- VINYL "T" POST
- ⊗ WITNESS TREE