

12 SECTION 16 TOWN 05 RANGE

ADAMS COUNTY

COUNTY CORNER NO: 40

ROMPORTOL ID: 41605122000

PUBLIC LAND SURVEY MONUMENT RECORD

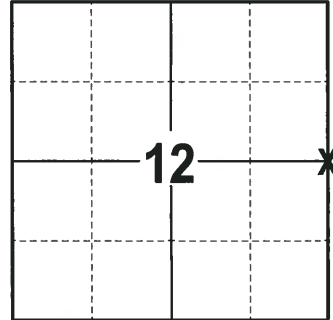
TYPE OF MONUMENT: HARRISON
 ADAMS COUNTY COORDINATES, NAD 83 (2007)

N. 188468.332

E. 525839.753

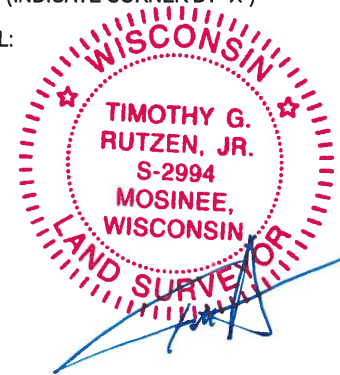
ELEVATION- _____ DATUM _____

FIELD WORK DATE: 11/13/2017



LOCATION
 (INDICATE CORNER BY "X")

SEAL:



DATA SHOWN HERE ON THIS TIE SHEET IS CORRECT AND COMPLETE TO THE BEST OF MY KNOWLEDGE AND BELIEF.

PROFESSIONAL LAND SURVEYOR

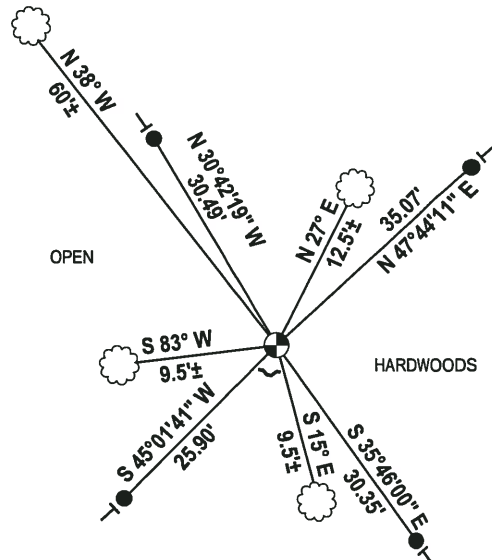
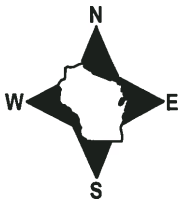
DATE 12-4-17

BASIS FOR MONUMENT LOCATION

1976 - PLS 1103 RAN EDM/T2 TRAVERSE AROUND SECTION 8, 9, 10, 11 AND 12 TO DETERMINE THE SEARCH AREA. FOUND A DOWN FENCE LINE THRU THE SEARCH AREA AND APPARENT BEARING TREE TO THE NORTHWEST. EXCAVATED AT THE INTERSECTION OF TIE DISTANCE TO BEARING TREE AND FENCE LINE. FOUND A ROUND STAIN IN EXCAVATION FROM ANCIENT POST. SET A HARRISON MONUMENT AT STAIN LOCATION AND RE-TIED.

2017 - PLS 2994 FOUND A HARRISON MONUMENT FLUSH WITH THE GROUND SURFACE AND 4 WITNESS TREES. THE MONUMENT AGREES WITH THE EXISTING WITNESS TREES. ACCEPTED THE HARRISON MONUMENT AS THE CORNER LOCATION. SET 4 NEW TIES AND MEASURED TO THE TIES AND WITNESS TREES.

- TIE SKETCH



- 3/4" x 18" IRON REBAR SET, 1.50#/FT
- ⊙ HARRISON FOUND
- ~ STEEL FENCE POST
- ┌ VINYL "T" POST
- ☁ WITNESS TREE FOUND

ADAMS COUNTY

Survey Monument Record

TYPE OF MONUMENT: Harrison Monument

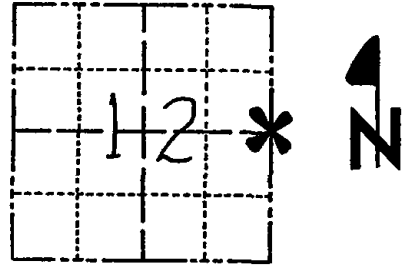
STATE PLANE COORDINATES: N _____
E _____

ELEVATION — M.S.L. DATUM: _____

THETA ANGLE: _____

FIELD BOOK: 38 PAGE 18

CORNER NO. 40
SECTION 12
TOWN 16
RANGE 5



LOCATION
(Indicated by 'X')

SEAL:



BASIS FOR MONUMENT LOCATION

(Use reverse side if necessary)

Show info such as: History of corner, with reference to Vol. and pg, dates, surveyor; exact description of monument replaced; if location computed, by taped or EDM traverse; landowner remarks, etc.

Ran EDM/T2 traverse around Sections 8, 9, 10, 11 and 12 to determine search area.

Found down fenceline thru search area and apparent bearing tree to Northwest.

Excavated at intersection of tie distance to tree and fence line. Found round stain in excavation from ancient post.

Remonumented post stain with Harrison Monument on 10-15-76.

COR OK 10/6/80 KU-SK

7-22-85 SS - DK

ALL OK 8-29-90 GR-JG

1-GONE, 1-NEW 3/10/95 JG-CR

ALL OK, 5/9/00 - JG

CERTIFIED CORRECT:

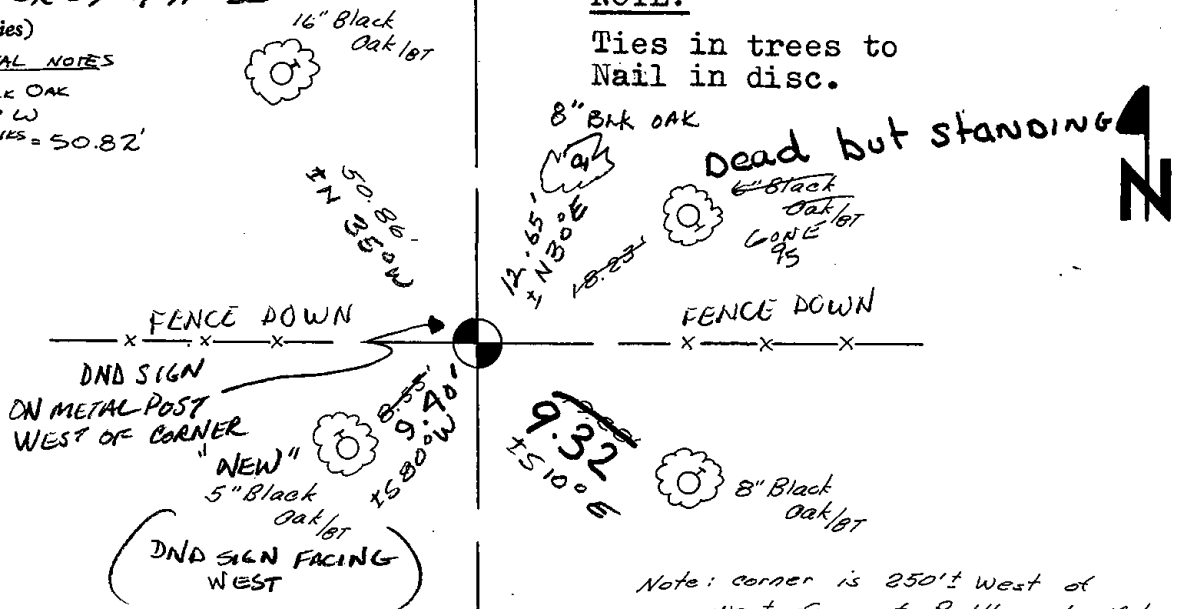
Dale C Hagen
Registered Land Surveyor
DATE: 11-30-76

TIE SKETCH 1-GONE, 1-NEW, 12/20/05 - JG
OK - 1-4-11 SS

(Show at least four ties)

ORIGINAL NOTES

14" BLK OAK
N 65° W
77 LINES = 50.82'



NOTE:

Ties in trees to Nail in disc.

Note: corner is 250'± West of West face of Rattlesnake Md.