

PUBLIC LAND SURVEY MONUMENT RECORD

TYPE OF MONUMENT: HARRISON
 ADAMS COUNTY COORDINATES, NAD 83 (2007)

N. 185843.290

E. 499270.463

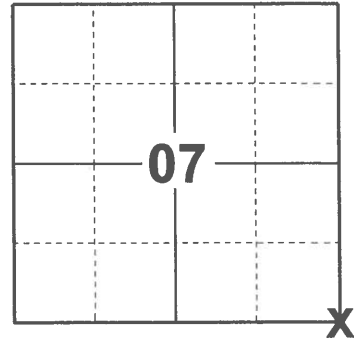
ELEVATION- _____ DATUM _____

FIELD WORK DATE: 01/13/2021

BASIS FOR MONUMENT LOCATION

1972 - PLS 981 FOUND "PK" SET MONUMENT MAY 10, 1972

2021 - PLS 2675 FOUND HARRISON MONUMENT 4"± BELOW ROAD SURFACE AND 1 WITNESS. THE MONUMENT AGREES WITH THE EXISTING WITNESS. ACCEPTED THE HARRISON AS THE CORNER LOCATION. LOCATED 4 RIW MONUMENTS AS TIES AND MEASURED TO THE EXISTING WITNESS.



LOCATION
 (INDICATE CORNER BY "X")

SEAL:



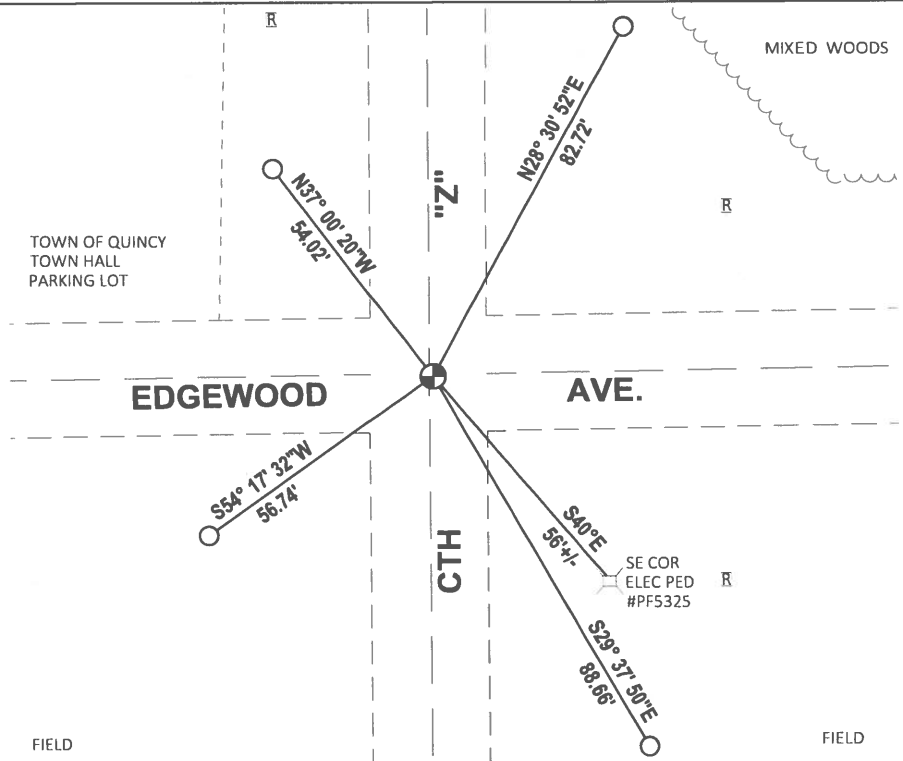
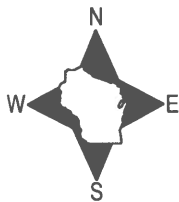
DATA SHOWN HERE ON THIS TIE SHEET IS CORRECT AND COMPLETE TO THE BEST OF MY KNOWLEDGE AND BELIEF.

PROFESSIONAL LAND SURVEYOR

DATE 2/23/2021

- TIE SKETCH

NOTE: THER CORNER LANDS 1± EAST OF CENTERLINE OF CTH "Z" AND 0.5± SOUTH OF CENTERLINE OF EDGEWOOD AVE.



- FOUND 3/4" IRON ROD
- FOUND HARRISON MONUMENT
- ⊠ RIW POST

FIELD

FIELD

Section 7 Town 16 Range 5

County Corner No. 43

Romportol ID 41605070000

ADAMS COUNTY

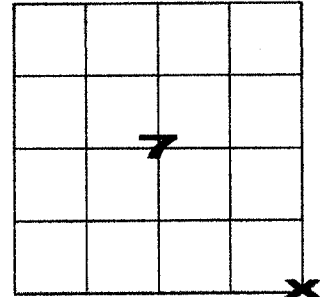
PUBLIC LAND SURVEY MONUMENT RECORD

Type of Monument Bernten Survey Nail

Adams County Coordinates (NAD 83, 2007)

Northing 185843.290

Easting 499270.463

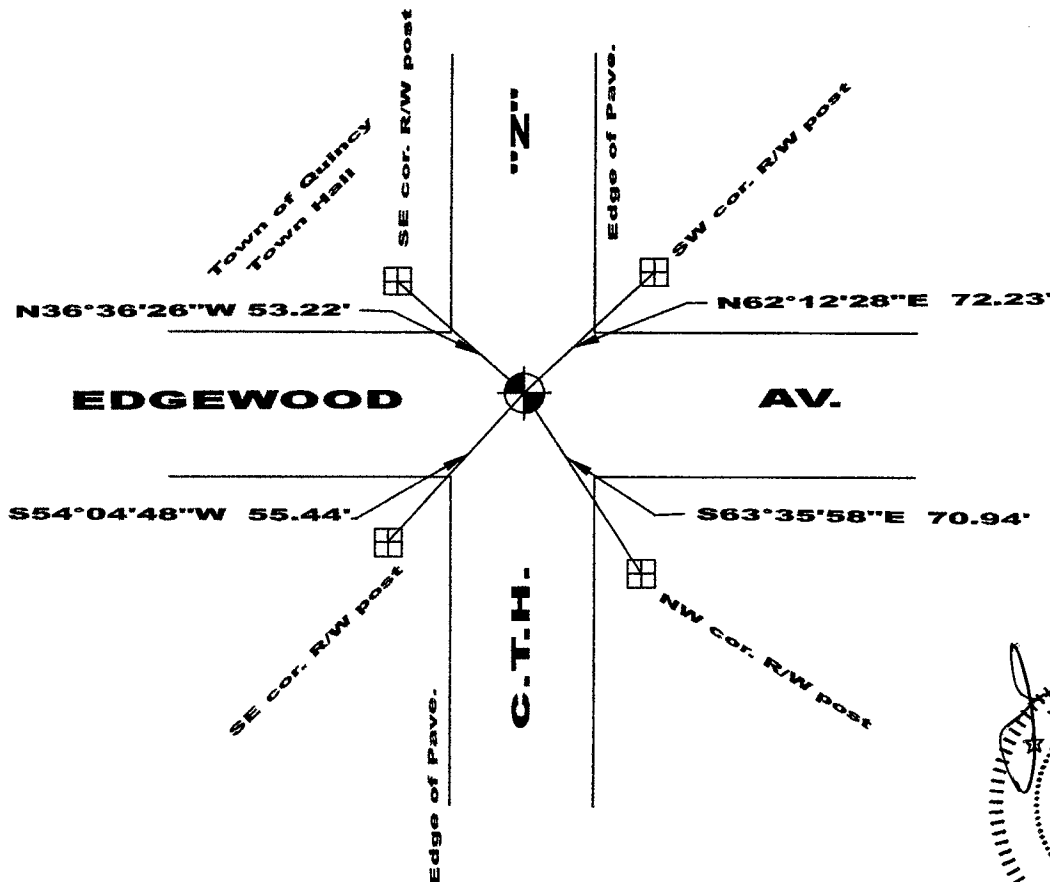


Corner History and Basis for Location

1972 - PLS 981 found and accepted a P.K. nail. Set a Harrison monument.

2021 - PLS 2675 found and excepted Harrison monument and set four new ties,

2022 - PLS 1739 placed a Berntsen Survey nail at the previously established location and measured to references as shown below. Harrison monument and ties destroyed due to road construction.



[Signature]
 WISCONSIN
 Jerol M. Smart
 S-1739
 Montello
 WI
 LAND SURVEYOR
 DEC. 22, 2022

I, Jerol M. Smart, P.L.S., Adams County Surveyor, do hereby certify that the information shown hereon is correct and that I have fully complied with Wisconsin Statutes and Admin. code to the best of my knowledge and belief.

ADAMS COUNTY

Survey Monument Record

TYPE OF MONUMENT: 30" HARRISON"

STATE PLANE COORDINATES: N. _____

E. _____

ELEVATION — M.S.L. DATUM: _____

THETA ANGLE: _____

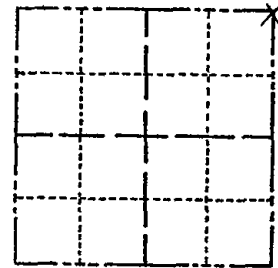
FIELD BOOK: L03 PAGE 124

CORNER NO. 124

SECTION 18

TOWN 16

RANGE 5



LOCATION
(Indicated by 'X')

SEAL:

BASIS FOR MONUMENT LOCATION

(Use reverse side if necessary)

Show info such as: History of corner, with reference to Vol. and pg, dates, surveyor; exact description of monument replaced; if location computed, by taped or EDM traverse; landowner remarks, etc.

Found "PK" set monument May 10, 1972

Sam T. Mullen S981 (R.L.S.)

CORNER O.K. 10/28/75 D.M. S.S.
 CORNER OK 10/1/80 DM-SJ
 CORNER OK 4/15/85 D.K.
 ALL OK 2-8-90 KZ
 2-GONE, 2-NEW 2-7-95 JG
 ALL OK 2-10-00 T.L.S.S.
 MON OK - 2 TIES REMAIN 12-20-10

CERTIFIED CORRECT:

Registered Land Surveyor

DATE: _____

TIE SKETCH

(Show at least four ties)

