

PUBLIC LAND SURVEY MONUMENT RECORD

TYPE OF MONUMENT: HARRISON
 ADAMS COUNTY COORDINATES, NAD 83 (2007)

N. 185907.326

E. 520504.330

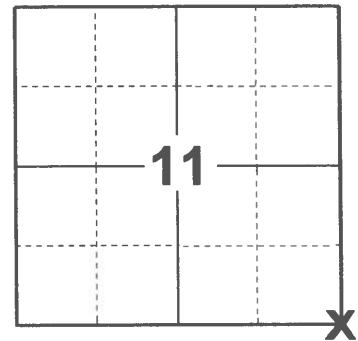
ELEVATION- _____ DATUM _____

FIELD WORK DATE: 01/19/2021

BASIS FOR MONUMENT LOCATION

1974 - PLS 728 ADAMS COUNTY MONUMENT WAS SET TO REPLACE EXISTING WOOD POST WITH SQUARED TOP. FOUND BLAZED AND MARKED WITNESS BEARING TREES. THESE WERE NOT ORIGINAL BEARING TREES. NO RECORDS AVAILABLE ON WHO SET CORNER OR BLAZED TREES. PROPERTY OWNERS (NEKOOSA-EWARDS PAPER COMPANY & REX HILL) RECOGNIZED AND USED THIS POST AS THE SECTION CORNER.

2021 - PLS 2675 FOUND HARRISON MONUMENT FLUSH WITH THE GROUND AND 2 WITNESS TREES. THE MONUMENT AGREES WITH BOTH WITNESS TREES. ACCEPTED THE HARRISON AS THE CORNER LOCATION. SET 4 NEW TIES AND MEASURED TO EXISTING WITNESS TREES.



LOCATION
 (INDICATE CORNER BY "X")

SEAL:

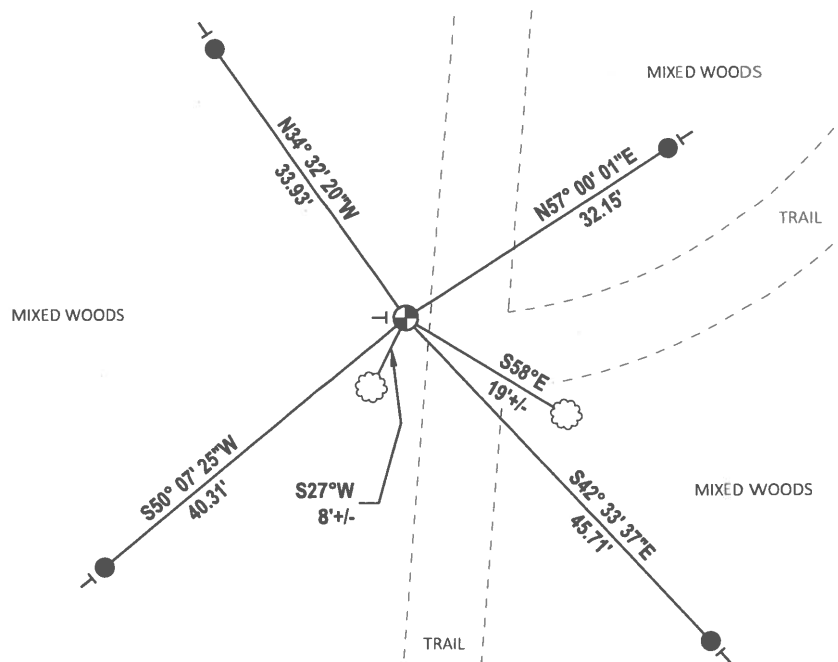
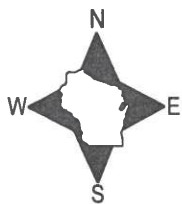


DATA SHOWN HERE ON THIS TIE SHEET IS CORRECT AND COMPLETE TO THE BEST OF MY KNOWLEDGE AND BELIEF.

PROFESSIONAL LAND SURVEYOR

DATE 2/23/2021

- TIE SKETCH



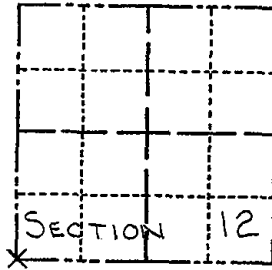
- SET 3/4" x 18" IRON REBAR, 1.50#/FT
- ⊕ FOUND HARRISON MONUMENT
- VINYL "T" POST
- ☁ WITNESS TREE

ADAMS COUNTY

Survey Monument Record

TYPE OF MONUMENT: ADAMS COUNTY
 STATE PLANE COORDINATES: N 43° 52' 35.7"
 HAND HELD GPS E 89° 51' 28.0"
 ELEVATION — M.S.L. DATUM: _____
 THETA ANGLE: _____
 FIELD BOOK: _____ PAGE _____

CORNER NO. 475
 SECTION 12
 TOWN 16N
 RANGE 5E



LOCATION
(Indicated by 'X')

SEAL:



BASIS FOR MONUMENT LOCATION

(Use reverse side if necessary)

Show info such as: History of corner, with reference to Vol. and pg, dates, surveyor; exact description of monument replaced; if location computed, by taped or EDM traverse; landowner remarks, etc.

ADAMS COUNTY MONUMENT WAS SET TO REPLACE EXISTING WOOD POST WITH SQUARED TOP. FOUND BLASED AND MARKED WITNESS BEARING TREES. THESE WERE NOT ORIGINAL BEARING TREES. NO RECORDS AVAILABLE ON WHO SET CORNER OR BLASED TREES. PROPERTY OWNERS (NEKOOSA-EDWARDS PAPER COMPANY & REX HILL) RECOGNIZED AND USED THIS POST AS THE SECTION CORNER.

OVER

CORNER O.K. 1-2-75 D.M.-S.S.
 SEC NOTE - TREES MARKED
 TIES MON O.K. 1-9-81 NJ4TH
 ALL OK 1-9-90 GR-KZ / OK 7-13-90 M. CARLSON

CERTIFIED CORRECT:

Donald L. Paulson
 Registered Land Surveyor

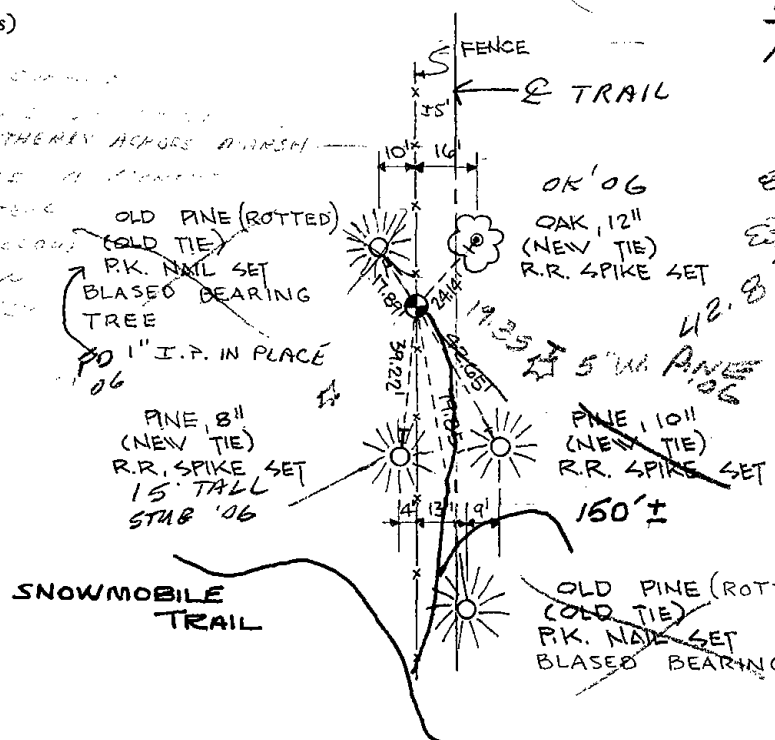
DATE: JULY 26, 1974

TIE SKETCH

(Show at least four ties)

3 NEW TIES 1-10-06 - JG-SS

Notes on sketch:
 NORTH FENCE (STEEL
 NAILS) TAKEN FROM
 FENCE SOUTH ON
 ROAD AND PLACED
 EAST OF TREE
 1-10-06



4" W. PINE '06
 505°W 8.6'
 NAIL / WEST SIDE

8" W OAK '06

SCALE = 1" = 50'

- NOTES:
- ADAMS COUNTY MONUMENT SET AT THIS CORNER.
 - ALL DIMENSIONS ARE TO THE FACE OF NAILS SET.

12-07-10 FD. HARRISON - FENCES NOW REMNANTS - TRAILS ARE
GR-SS MOSTLY GONE

6" BLACK '10
OAK '10
12.6'
± N 10° W

36.42
± N 65° E

6" WHITE PINE '10

8.59'
8.70° W
19.35'
± S 30° E
6" WHITE PINE '06

19.35'
± S 30° E
5" WHITE PINE '06