

PUBLIC LAND SURVEY MONUMENT RECORD

TYPE OF MONUMENT: HARRISON
 ADAMS COUNTY COORDINATES, NAD 83 (2007)

N. 183189.281

E. 499278.573

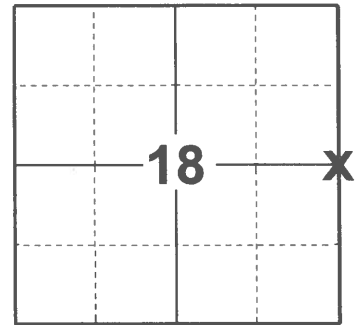
ELEVATION- - - - - DATUM - - - - -

FIELD WORK DATE: 02/02/2021

BASIS FOR MONUMENT LOCATION

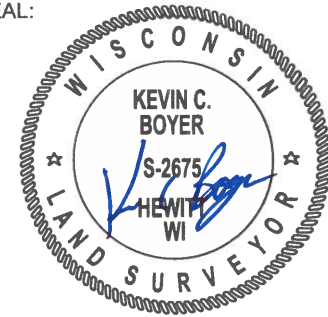
1972 - PLS 981 FOUND "PK" NAIL, AND SET A 30" HARRISON MONUMENT.

2021 - PLS 2675 FOUND A MAG-NAIL IN THE ROAD SURFACE, REMOVED AND FOUND A HARRISON MONUMENT 4"± BELOW THE ROAD SURFACE. DID NOT RECOVER ANY EXISTING TIES OR WITNESSES. ACCEPTED THE HARRISON AS THE CORNER LOCATION. SET 4 NEW TIES.



LOCATION
 (INDICATE CORNER BY "X")

SEAL:

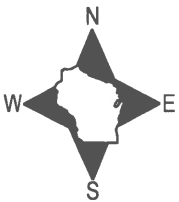


DATA SHOWN HERE ON THIS TIE SHEET IS CORRECT AND COMPLETE TO THE BEST OF MY KNOWLEDGE AND BELIEF.

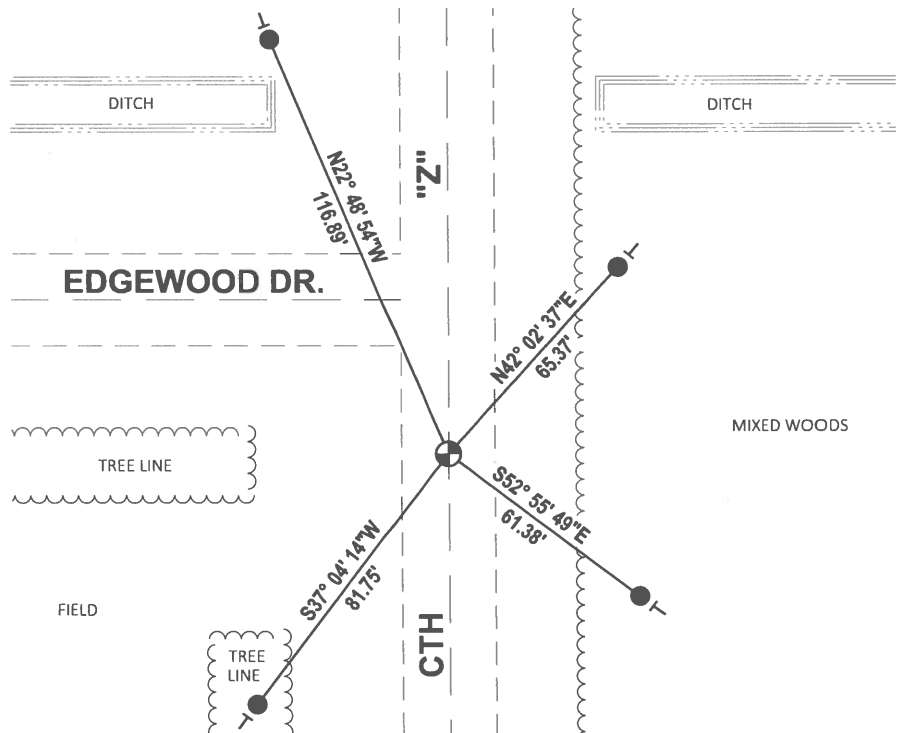
PROFESSIONAL LAND SURVEYOR

DATE 2/23/2021

- TIE SKETCH



- SET 3/4" x 18" IRON REBAR, 1.50#/FT
- ⊕ FOUND HARRISON MONUMENT
- ┆ VINYL "T" POST



ADAMS COUNTY

Survey Monument Record

TYPE OF MONUMENT: 30" Harrison Monument

STATE PLANE COORDINATES: N _____

E _____

ELEVATION — M.S.L. DATUM: _____

THETA ANGLE: _____

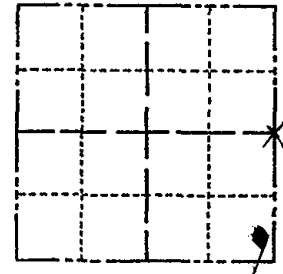
FIELD BOOK: 103 PAGE 123

CORNER NO. 123

SECTION 18

TOWN 16

RANGE 5



LOCATION
(Indicated by 'X')

SEAL:

BASIS FOR MONUMENT LOCATION

(Use reverse side if necessary)

Show info such as: History of corner, with reference to Vol. and pg. dates, surveyor; exact description of monument replaced; if location computed, by taped or EDM traverse; landowner remarks, etc.

Found "pk" nail set 30" harrison monument

May 10, 1972 by surveyor 981 (Sam T. Mullen

CORNER O.K. 10/28/75 D.M. - S.L.
 CORNER OK 10/2/80 KV - SK
 2 GONE NO NEW, 4/15/85 D.K.
 OK 3-23-90 KZ-SS
 ALL OK 2-7-95 SG
 2 GONE 2 NEW 2-10-00 T.W. S.S.
 3-2-05 SET MAG FROM 3 TIES DA./SS.
 FD MAG - 2 NEW TIES 12-20-10

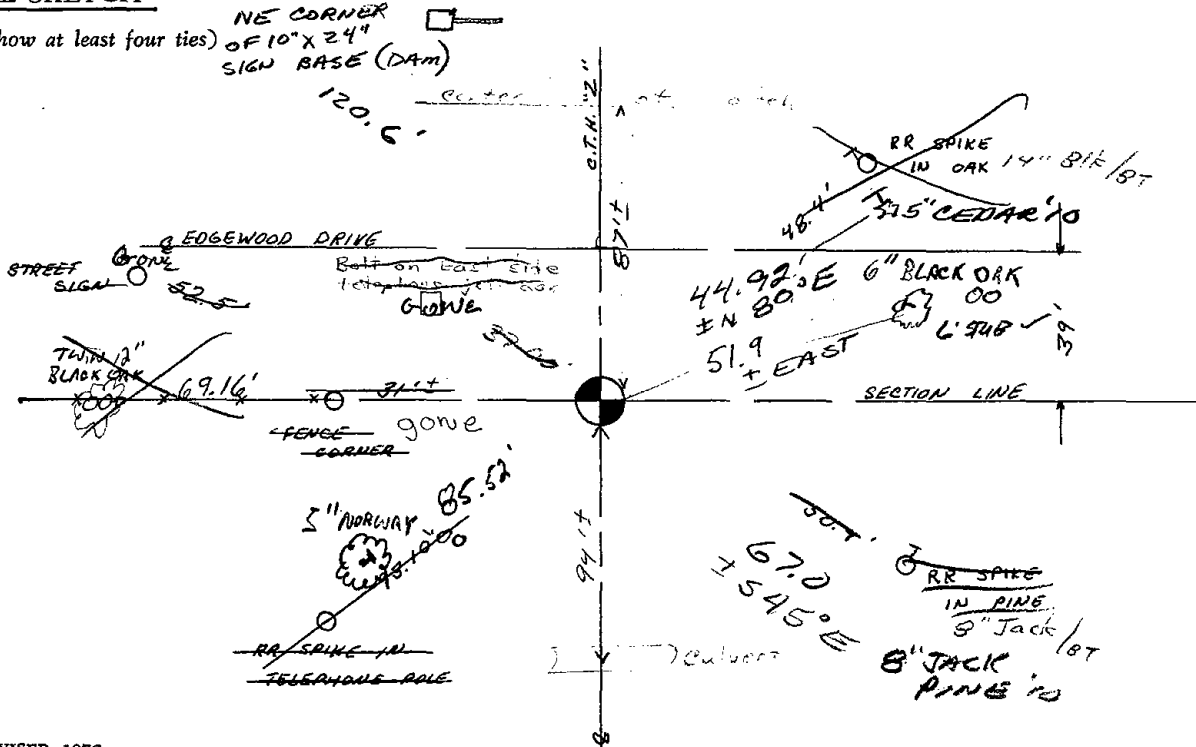
CERTIFIED CORRECT:

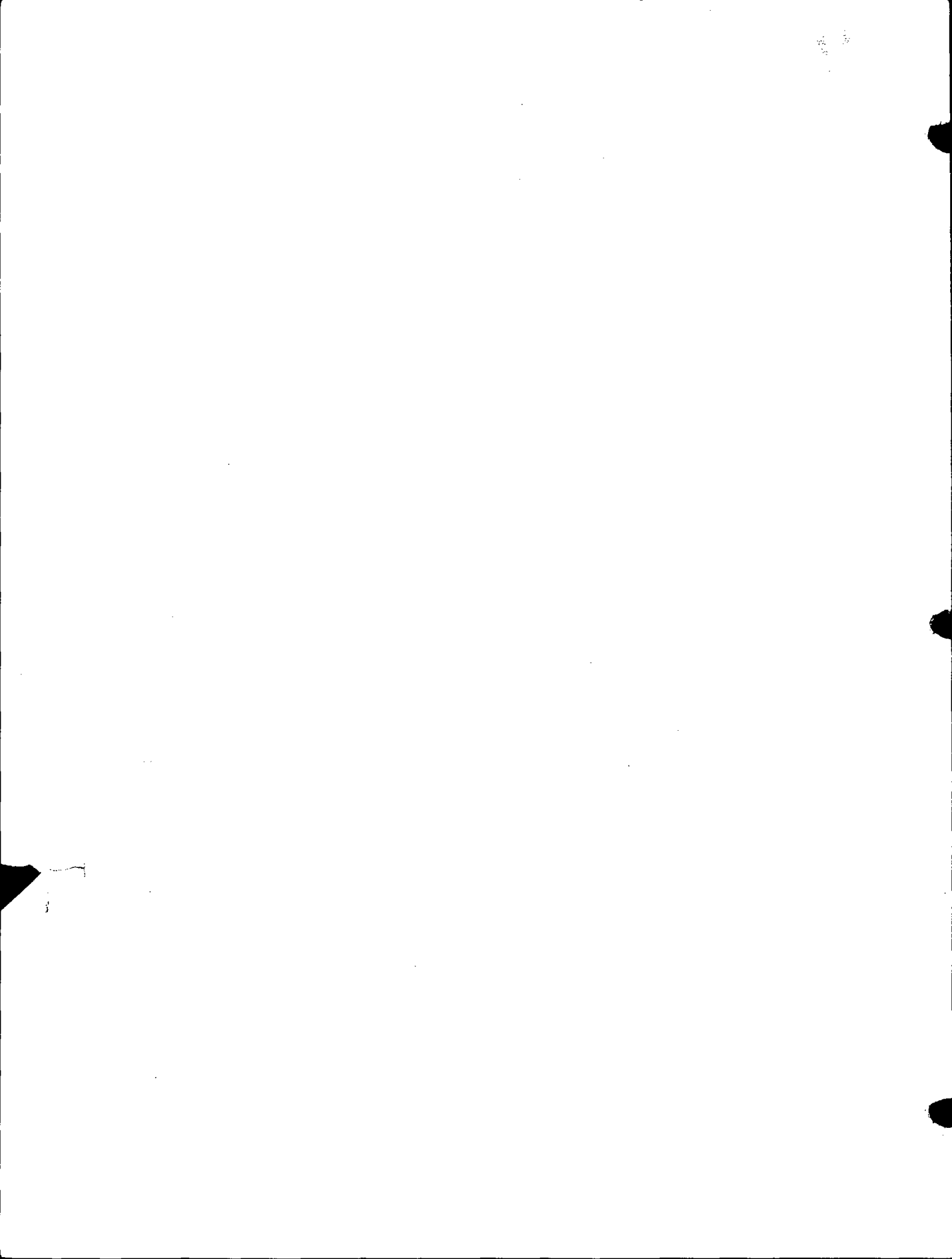
Registered Land Surveyor

DATE: _____

TIE SKETCH

(Show at least four ties) NE CORNER OF 10" X 24" SIGN BASE (DAM)





ADAMS COUNTY

Survey Monument Record

TYPE OF MONUMENT: 30" Harrison Monument

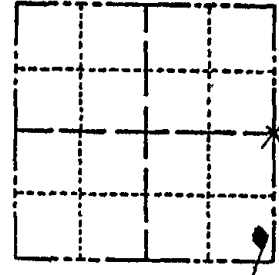
STATE PLANE COORDINATES: N _____
E _____

ELEVATION — M.S.L. DATUM: _____

THETA ANGLE: _____

FIELD BOOK: 103 PAGE 123

CORNER NO. 123 (56)
SECTION 18
TOWN 16
RANGE 5



LOCATION
(Indicated by 'X')

SEAL:

BASIS FOR MONUMENT LOCATION

(Use reverse side if necessary)

Show info such as: History of corner, with reference to Vol. and pg, dates, surveyor; exact description of monument replaced; if location computed, by taped or EDM traverse; landowner remarks, etc.

Found "pk" nail set 30" harrison monument

May 10, 1972 by surveyor 981 (Sam T. Mullen)

*This X is wrong loc?
See dimensions*

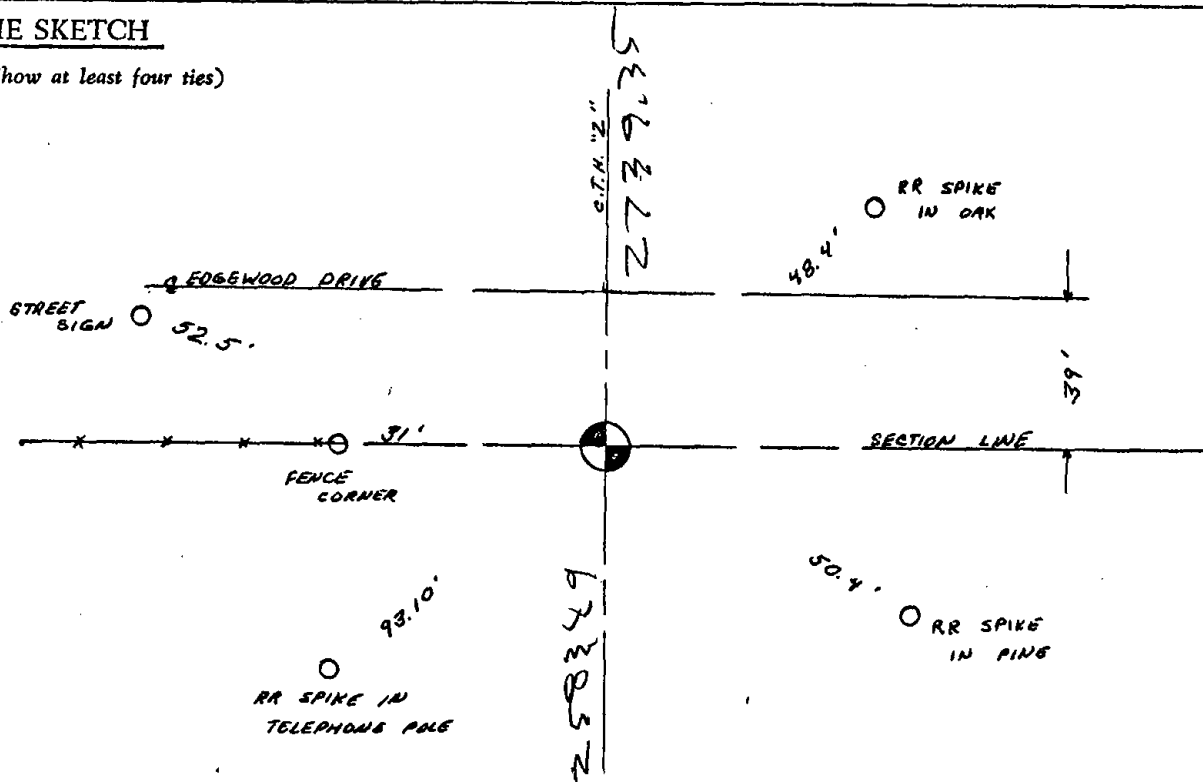
CERTIFIED CORRECT:

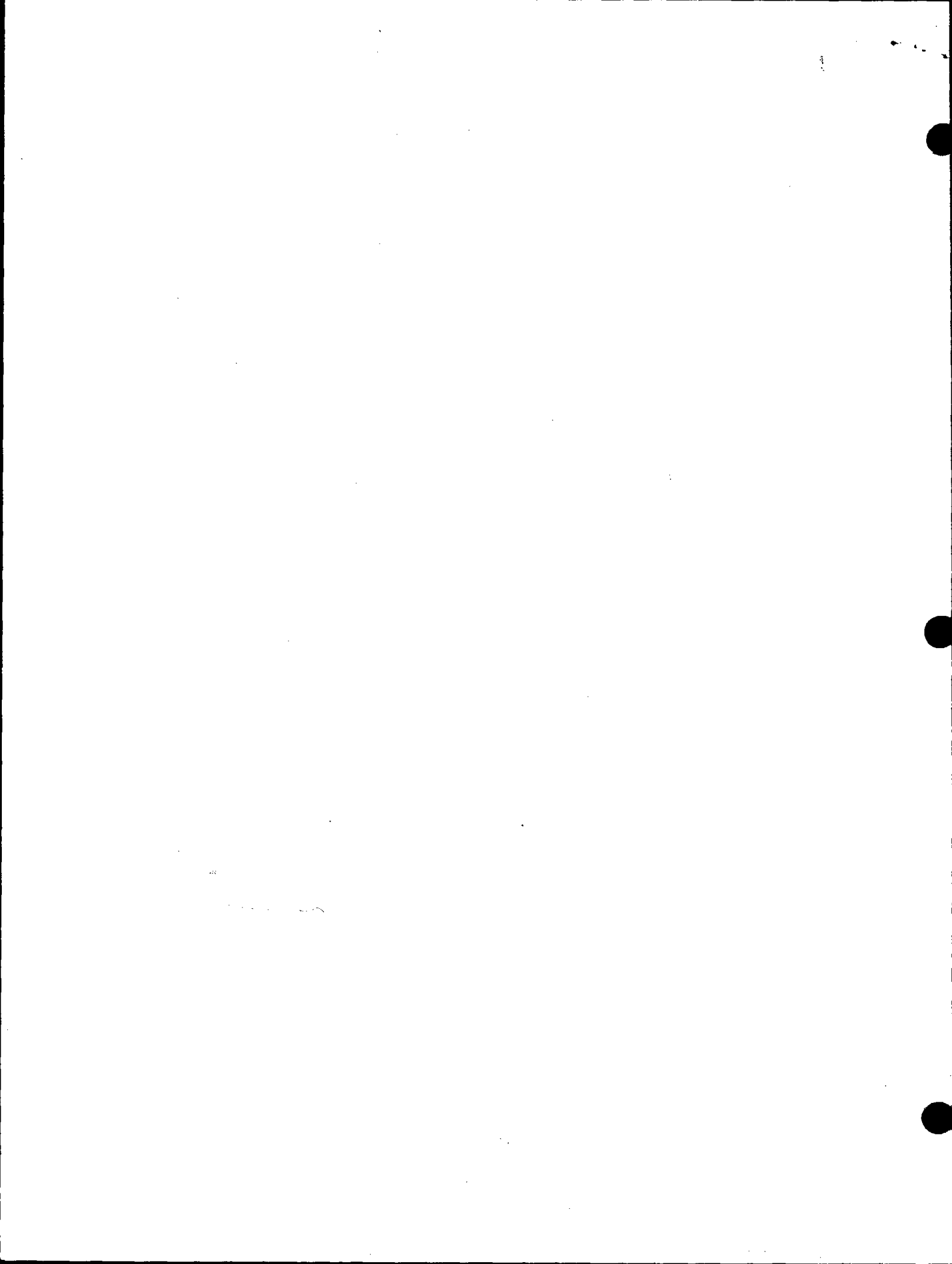
Registered Land Surveyor

DATE: _____

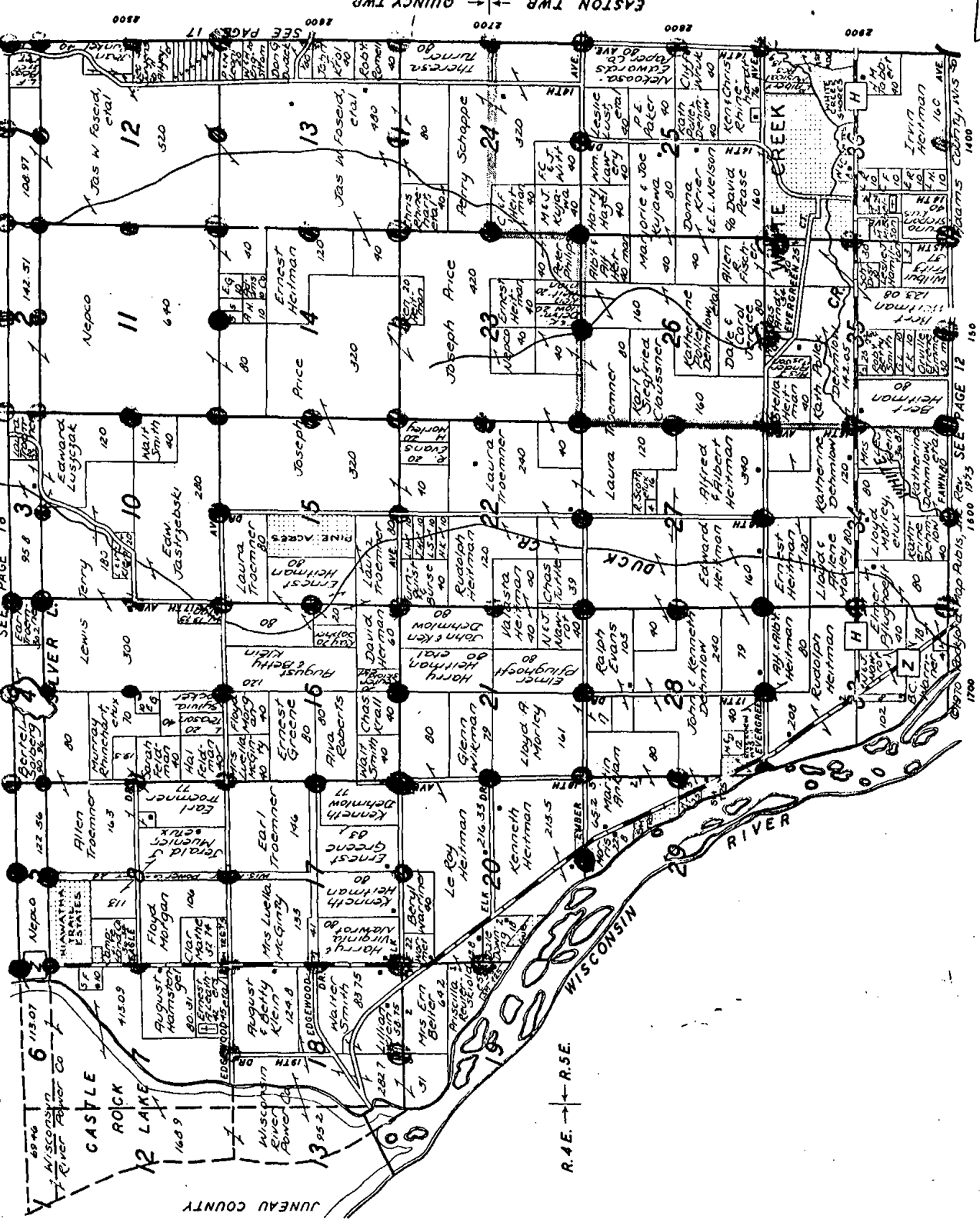
TIE SKETCH

(Show at least four ties)

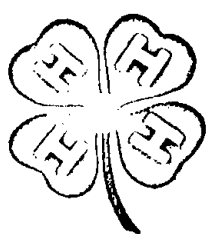




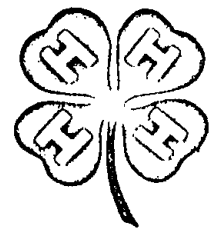
SOUTH QUINCY WEST EASTON T. 16N.-R. 4-5E.
 PART EASTON T. 16N.-R. 4-5E.



THE NATIONAL 4-H CLUB PLEDGE



I PLEDGE:
 My head to clear thinking
 My heart to greater loyalty
 My hands to larger service
 And my health to better living
 For my home, my club,
 My community and
 My country



KIEDROWSKI ENGINEERING, INC.

4340 - 80TH STREET SOUTH (KELLNER)

WISCONSIN RAPIDS, WI 54494 PHONE (715) 421-0444

TO Greg Rhinehart

Mid-State Assoc.
514 Main

Friendship, WI 53934

SUBJECT

E $\frac{1}{4}$ corner 18-16-5

MESSAGE

DATE 11/2/82

Greg:

I think this corner is in the wrong place. See Section dimensions.

REPLY

SIGNED

Tong

DATE

SIGNED