

PUBLIC LAND SURVEY MONUMENT RECORD

TYPE OF MONUMENT: HARRISON
 ADAMS COUNTY COORDINATES, NAD 83 (2007)

N. 183190.544

E. 515206.420

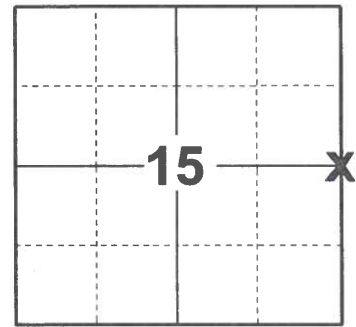
ELEVATION- - - - - DATUM - - - - -

FIELD WORK DATE: 01/20/2021

BASIS FOR MONUMENT LOCATION

1977 - PLS 1103 RAN EDM/T2 TRAVERSE AROUND SECTION 14 AND PARTS OF ADJOINING SECTIONS TO DETERMINE SEARCH AREAS FOR INVESTIGATION. COULD FIND NO EVIDENCE OF THE ORIGINAL CORNER OR ANY REMONUMENTATION. COULD FIND NO BEARING TREES, THOUGH AREA LOOKS VERY PROMISING. SET CORNER BY SINGLE PROPORTIONATE MEASURE ON LINE BETWEEN ADJACENT SECTION CORNERS. SET HARRISON MONUMENT ON 12-14-1976.

2021 - PLS 2675 FOUND HARRISON MONUMENT FLUSH WITH GROUND SURFACE AND DID NOT RECOVER ANY TIES OR WITNESSES. ACCEPTED THE HARRISON AS THE CORNER LOCATION. SET 4 NEW TIES.



LOCATION
 (INDICATE CORNER BY "X")

SEAL:

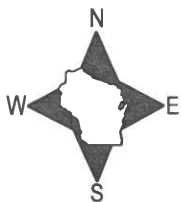


DATA SHOWN HERE ON THIS TIE SHEET IS CORRECT AND COMPLETE TO THE BEST OF MY KNOWLEDGE AND BELIEF.

PROFESSIONAL LAND SURVEYOR

DATE 2/23/2021

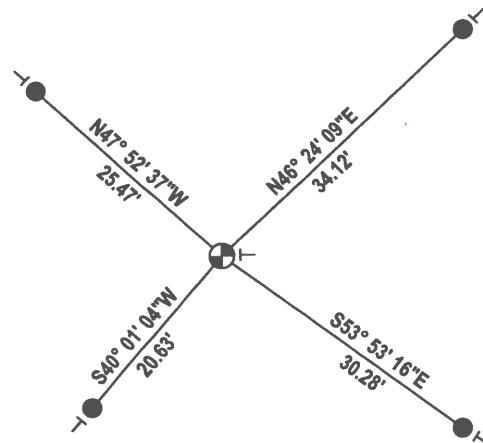
TIE SKETCH



MIXED WOODS
 HILLSIDE

HARDWOODS
 BENCH

TOP OF SLOPE



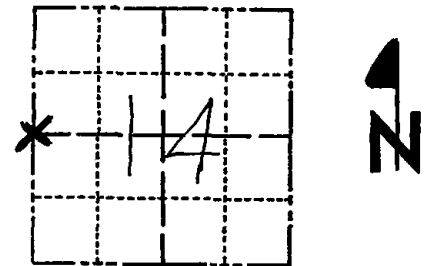
- SET 3/4" x 18" IRON REBAR, 1.50#/FT
- ⊕ FOUND HARRISON MONUMENT
- VINYL "T" POST

ADAMS COUNTY

Survey Monument Record

CORNER NO. 58
SECTION 14
TOWN 16
RANGE 5

TYPE OF MONUMENT: HARRISON
STATE PLANE COORDINATES: N 43° 52' 07.3
E 089 52 40.4
ELEVATION — M.S.L. DATUM:
THETA ANGLE:
FIELD BOOK: 38 PAGE 23



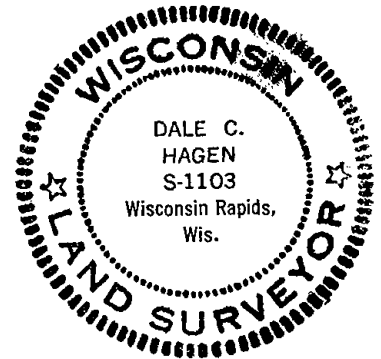
LOCATION (Indicated by 'X')

BASIS FOR MONUMENT LOCATION

(Use reverse side if necessary)

Show info such as: History of corner, with reference to Vol. and pg. dates, surveyor; exact description of monument replaced; if location computed, by taped or EDM traverse; landowner remarks, etc.

SEAL:



Ran EDM/T2 traverse around Section 14 and parts of adjoining sections to determine search areas for investigation.

Could find no evidence of the original corner or any remonumentation. Could find no bearing trees, though area looks very promising.

Set corner by single proportionate measure on line between adjacent section corners.

Set Harrison monument on 12-14-76.

COR. OK 10/3/80 KU-SK
AN OK 5/28/85 DK
ALL OK 8-29-90 GR-JG
" " 1-10-06 SS - SIGNS ON ALL BIS
" " 12-8-10 GR OK

CERTIFIED CORRECT:

Dale C Hagen
Registered Land Surveyor
DATE 7-5-77

TIE SKETCH

(Show at least four ties)

NOTE

Ties in trees to nail in disc.

