

PUBLIC LAND SURVEY MONUMENT RECORD

TYPE OF MONUMENT: HARRISON
 ADAMS COUNTY COORDINATES, NAD 83 (2007)

N. 180543.630

E. 496677.440

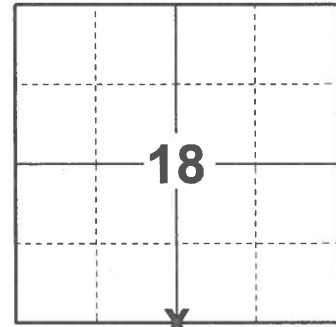
ELEVATION- - - - - DATUM - - - - -

FIELD WORK DATE: 02/02/2021

BASIS FOR MONUMENT LOCATION

1972 - PLS 981 SET 30" HARRISON MONUMENT ON MAY 10, 1972.

2021 - PLS 2675 FOUND HARRISON MONUMENT 2" ABOVE GROUND SURFACE AND 1 TIE. THE MONUMENT AGREE WITH THE EXISTING TIE. ACCEPTED THE HARRISON AS THE CORNER LOCATION. SET 4 NEW TIES AND MEASURED TO THE EXISTING TIE.



LOCATION

(INDICATE CORNER BY "X")

SEAL:

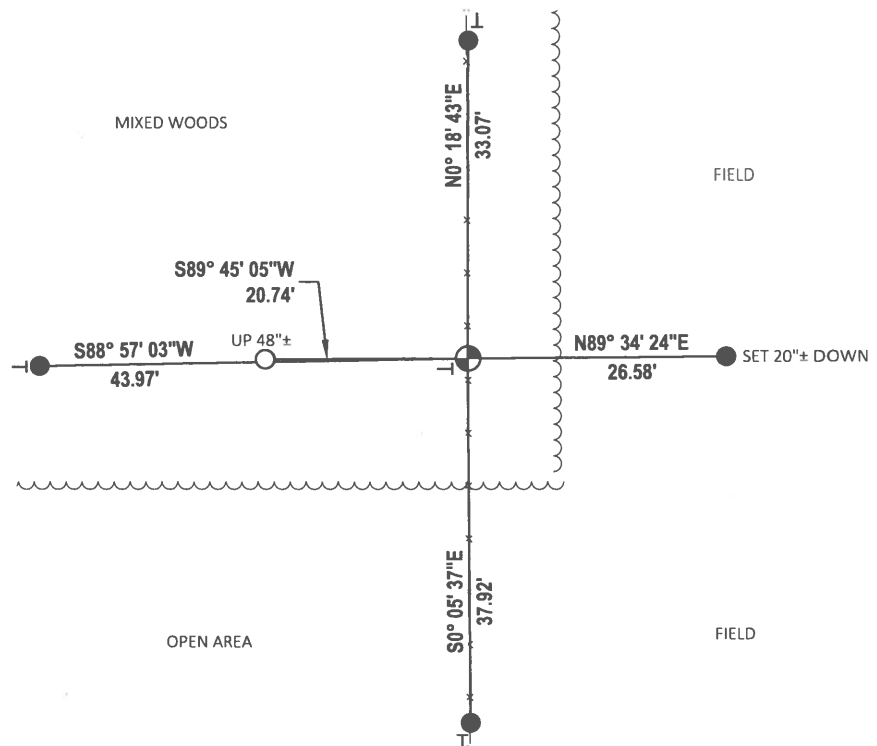
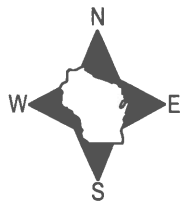


DATA SHOWN HERE ON THIS TIE SHEET IS CORRECT AND COMPLETE TO THE BEST OF MY KNOWLEDGE AND BELIEF.

PROFESSIONAL LAND SURVEYOR

DATE 2/23/2021

- TIE SKETCH



- SET 3/4" x 18" IRON REBAR, 1.50#/FT
- FOUND 3/4" IRON ROD
- ⊕ FOUND HARRISON MONUMENT
- ⊣ VINYL "T" POST

ADAMS COUNTY

Survey Monument Record

TYPE OF MONUMENT: 30" HARRISON

STATE PLANE COORDINATES: N _____

E _____

ELEVATION — M.S.L. DATUM: _____

THETA ANGLE: _____

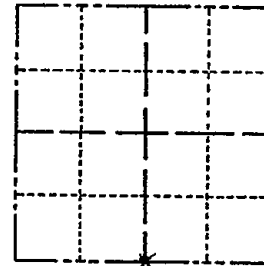
FIELD BOOK: 103 PAGE 121

CORNER NO. 121

SECTION 18

TOWN 16

RANGE 5



LOCATION
(Indicated by 'X')

SEAL:

BASIS FOR MONUMENT LOCATION

(Use reverse side if necessary)

Show info such as: History of corner, with reference to Vol. and pg, dates, surveyor; exact description of monument replaced; if location computed, by taped or EDM traverse; landowner remarks, etc.

Set 30" Harrison monument on May 10, 1972

Sam T. Mullen R L S 981

CORNER O.K. 10/28/75 D.M.-S.S.

CORNER OK 10/2/80 KV-SK

CORNER OK 11-4-85 S.S.

CORNER OK 3-23-90

10-93 KC ALL OK

1-13-95 85-SS OK

10-26-10 OK SS

CERTIFIED CORRECT:

Registered Land Surveyor

DATE: _____

TIE SKETCH

(Show at least four ties)

