

PUBLIC LAND SURVEY MONUMENT RECORD

TYPE OF MONUMENT: HARRISON (BROKEN-TOP)
ADAMS COUNTY COORDINATES, NAD 83 (2007)

N. 180535.801

E. 499320.750

ELEVATION- - - - DATUM - - - -

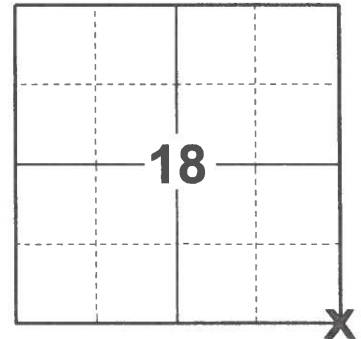
FIELD WORK DATE: 02/02/2021

BASIS FOR MONUMENT LOCATION

1972 - PLS 981 FOUND "PK" NAIL, SET 30" HARRISON MONUMENT (ALSO FOUND A RAILROAD SPIKE).

2005 - PLS 2168 FOUND STANDARD HARRISON 18" DEEP WITH THE TOP BROKEN OFF. AS PER DISCUSSION WITH THE ADAMS COUNTY SURVEYOR, SET TIES WELL OUT INTO SAFE AREAS AND RETURNED TO PLACE MAG NAIL IN ROAD SURFACE OVER MONUMENT AFTER PAVING COMPLETE.

2021 - PLS 2675 FOUND SURVEY NAIL IN THE ROAD SURFACE, REMOVED, AND FOUND HARRISON (BROKEN-TOP) MONUMENT 18"± DOWN AND 4 EXISTING TIES. THE MONUMENT AGREES WITH ALL 4 TIES. ACCEPTED THE HARRISON (BROKEN-TOP) AS THE CORNER LOCATION AND MEASURED TO THE EXISTING TIES.



LOCATION
(INDICATE CORNER BY "X")

SEAL:



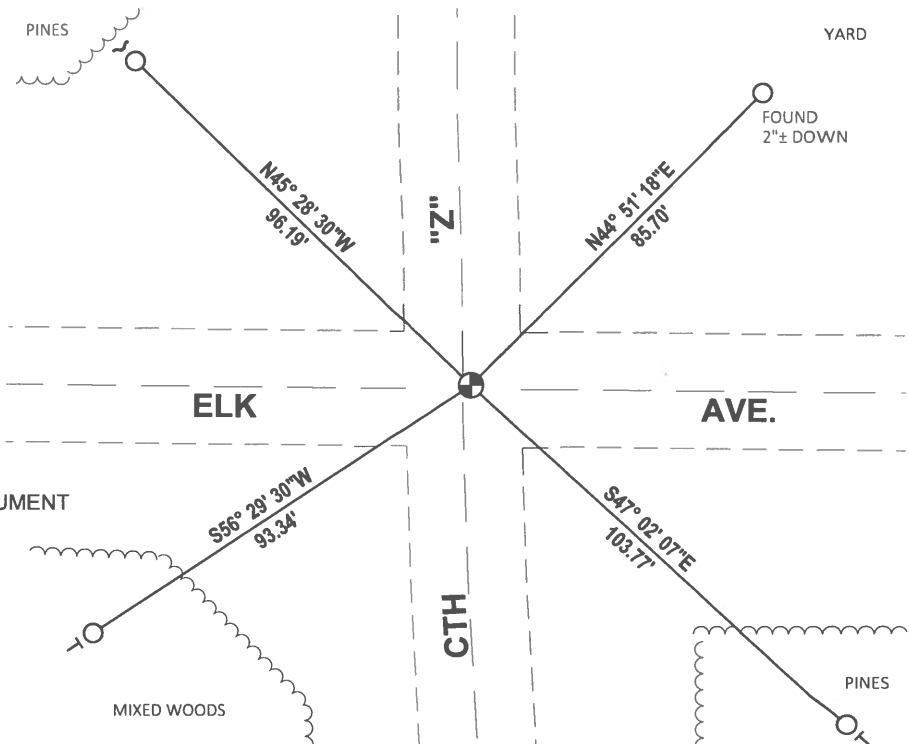
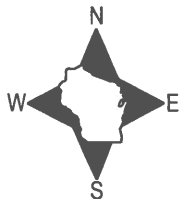
DATA SHOWN HERE ON THIS TIE SHEET IS CORRECT AND COMPLETE TO THE BEST OF MY KNOWLEDGE AND BELIEF.

PROFESSIONAL LAND SURVEYOR

DATE 2/23/2021

- TIE SKETCH

NOTE: THE CORNER LANDS 1'± NORTH OF CENTERLINE OF ELK AVE. AND 2'± EAST OF CENTERLINE OF CTH "Z".



- FOUND 3/4" IRON ROD
- ⊕ FOUND HARRISON (BROKEN-TOP) MONUMENT
- ↘ STEEL FENCE POST
- ↙ VINYL "T" POST

ADAMS COUNTY

Survey Monument Record

TYPE OF MONUMENT: 30 " Harrison

STATE PLANE COORDINATES: N _____

E _____

ELEVATION -- M.S.L. DATUM: _____

THETA ANGLE: _____

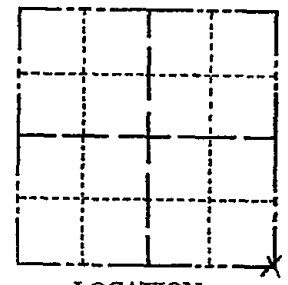
FIELD BOOK: 103 PAGE 122

CORNER NO. 122

SECTION 18

TOWN 16

RANGE 5



LOCATION
(Indicated by 'X')

SEAL:

BASIS FOR MONUMENT LOCATION

(Use reverse side if necessary)

Show info such as: History of corner, with reference to Vol. and pg, dates, surveyor; exact description of monument replaced; if location computed, by taped or EDM traverse; landowner remarks, etc.

Found "P. K." nail, set 30 inch Harrison Monument (also found R.R. spike)

May 10, 1972

R.L.S. 981-- Sam T. Mullen

*SEE ATTACHED
TIE SHEET
DATED 10-17-05*

CORNER O.K. 10/28/75 D.M.-S.S.
 CORNER OK 10/2/80 KV-SK
 ALL OK 4/15/85 D.K.
 ALL OK 3-23-90 KZ-SS
 1-GONE 2-7-95 JG 1-GONE 2-10-00 T.W.S.S.

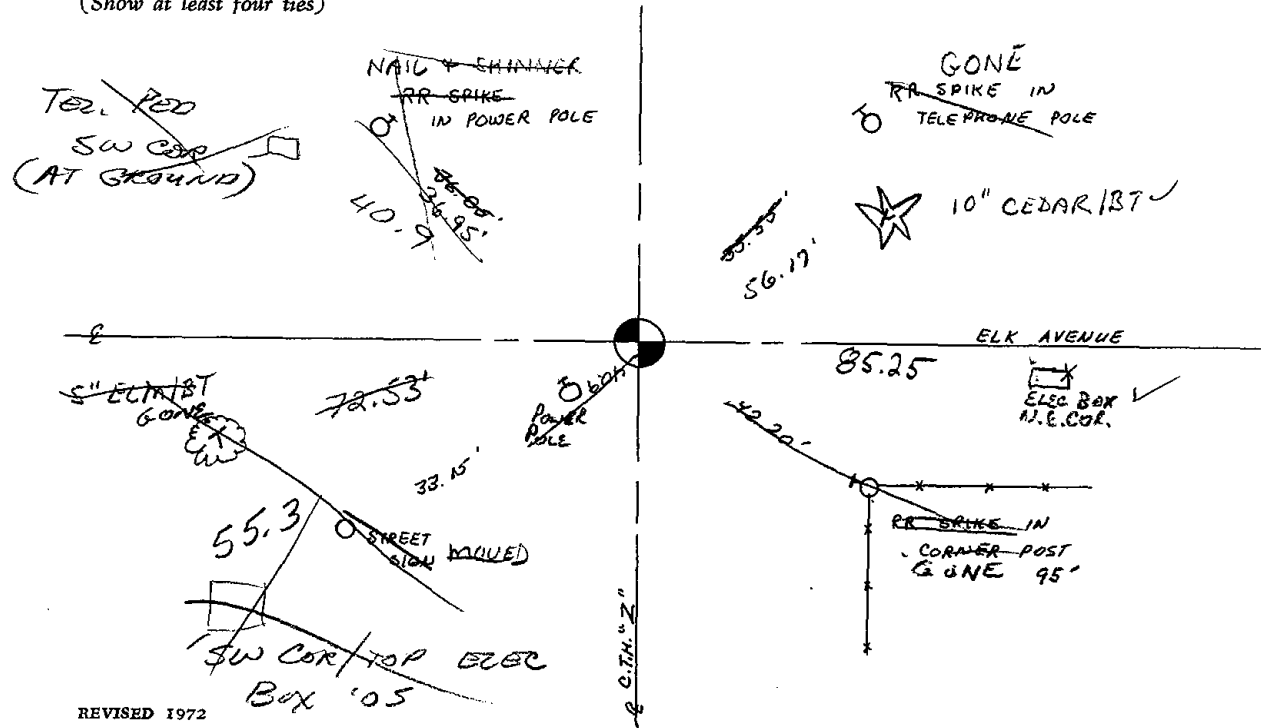
CERTIFIED CORRECT:

Registered Land Surveyor

DATE: _____

TIE SKETCH 2 NEW 3-4-05 JS-SS (SEE ATTACHED SHEET DTD 10-17-05)
 OK " 12-20-10

(Show at least four ties)



ADAMS COUNTY SURVEY MONUMENT RECORD

CORNER NO. _____
SECTION 19
TOWN 16 N.
RANGE 5 E.

TYPE OF MONUMENT: MAG NAIL OVER STANDARD HARRISON

ADAMS COUNTY COORDINATES
NORTHING:
EASTING:

■ = CORNER MONUMENT RESTORED

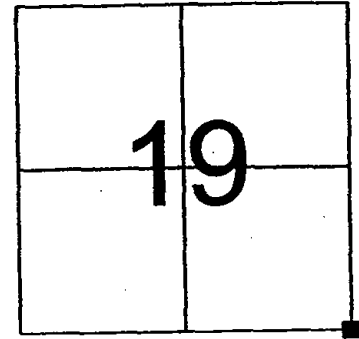
BASIS FOR MONUMENT LOCATION
(USE REVERSE SIDE IF NECESSARY)

SHOW INFO SUCH AS: HISTORY OF CORNER, WITH REFERENCE TO VOLUME AND PAGE DATES, SURVEYOR, EXACT DESCRIPTION OF MONUMENT PLACED OR FOUND, IF LOCATION COMPUTED, BY TAPED OR EDM TRAVERSE, LANDOWNER REMARKS, ETC.

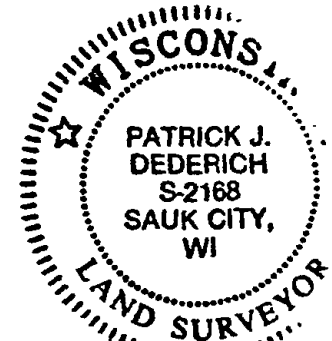
FOUND STANDARD HARRISON 18" DEEP WITH THE TOP BROKEN OFF. AS PER DISCUSSION WITH THE ADAMS COUNTY SURVEYOR, SET TIES WELL OUT INTO SAFE AREAS AND RETURNED TO PLACE MAG NAIL IN ROAD SURFACE OVER MONUMENT AFTER PAVING COMPLETE.

LEGEND

- = MAG NAIL IN ROAD SURFACE OVER STANDARD HARRISON WITH THE TOP BROKEN OFF
- = 3/4" X 24" IRON ROD SET
- ∟ = 2" CHANNEL POST WITH GOV'T SIGN.



LOCATION

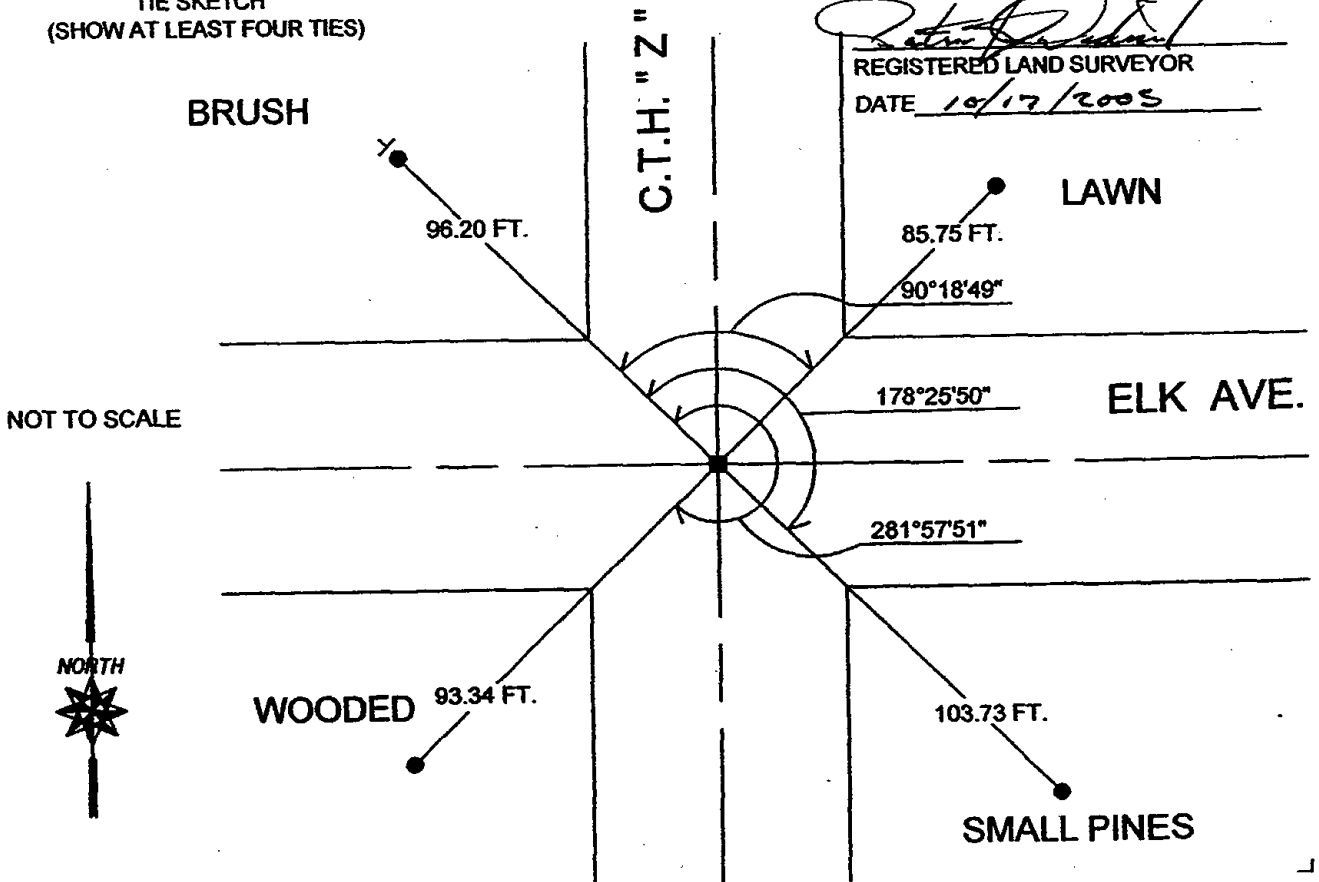


CERTIFIED CORRECT

REGISTERED LAND SURVEYOR

DATE 10/17/2005

TIE SKETCH
(SHOW AT LEAST FOUR TIES)



NOT TO SCALE



2

ADAMS COUNTY SURVEY MONUMENT RECORD

CORNER NO. 63
SECTION 19
TOWN 16 N.
RANGE 5 E.

TYPE OF MONUMENT: MAG NAIL OVER STANDARD HARRISON

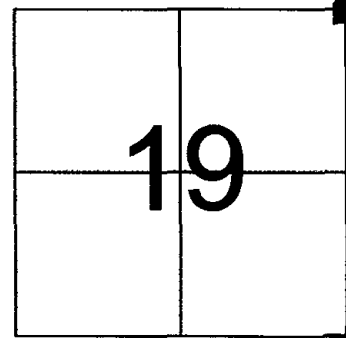
ADAMS COUNTY COORDINATES
NORTHING:
EASTING:

■ = CORNER MONUMENT RESTORED

BASIS FOR MONUMENT LOCATION
(USE REVERSE SIDE IF NECESSARY)

SHOW INFO SUCH AS: HISTORY OF CORNER, WITH REFERENCE TO VOLUME AND PAGE DATES, SURVEYOR; EXACT DESCRIPTION OF MONUMENT PLACED OR FOUND, IF LOCATION COMPUTED, BY TAPED OR EDM TRAVERSE; LANDOWNER REMARKS, ETC.

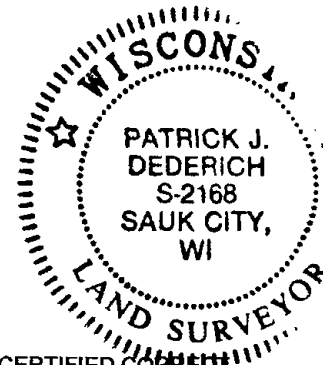
FOUND STANDARD HARRISON 18" DEEP WITH THE TOP BROKEN OFF.
AS PER DISCUSSION WITH THE ADAMS COUNTY SURVEYOR, SET TIES
WELL OUT INTO SAFE AREAS AND RETURNED TO PLACE MAG NAIL
IN ROAD SURFACE OVER MONUMENT AFTER PAVING COMPLETE.



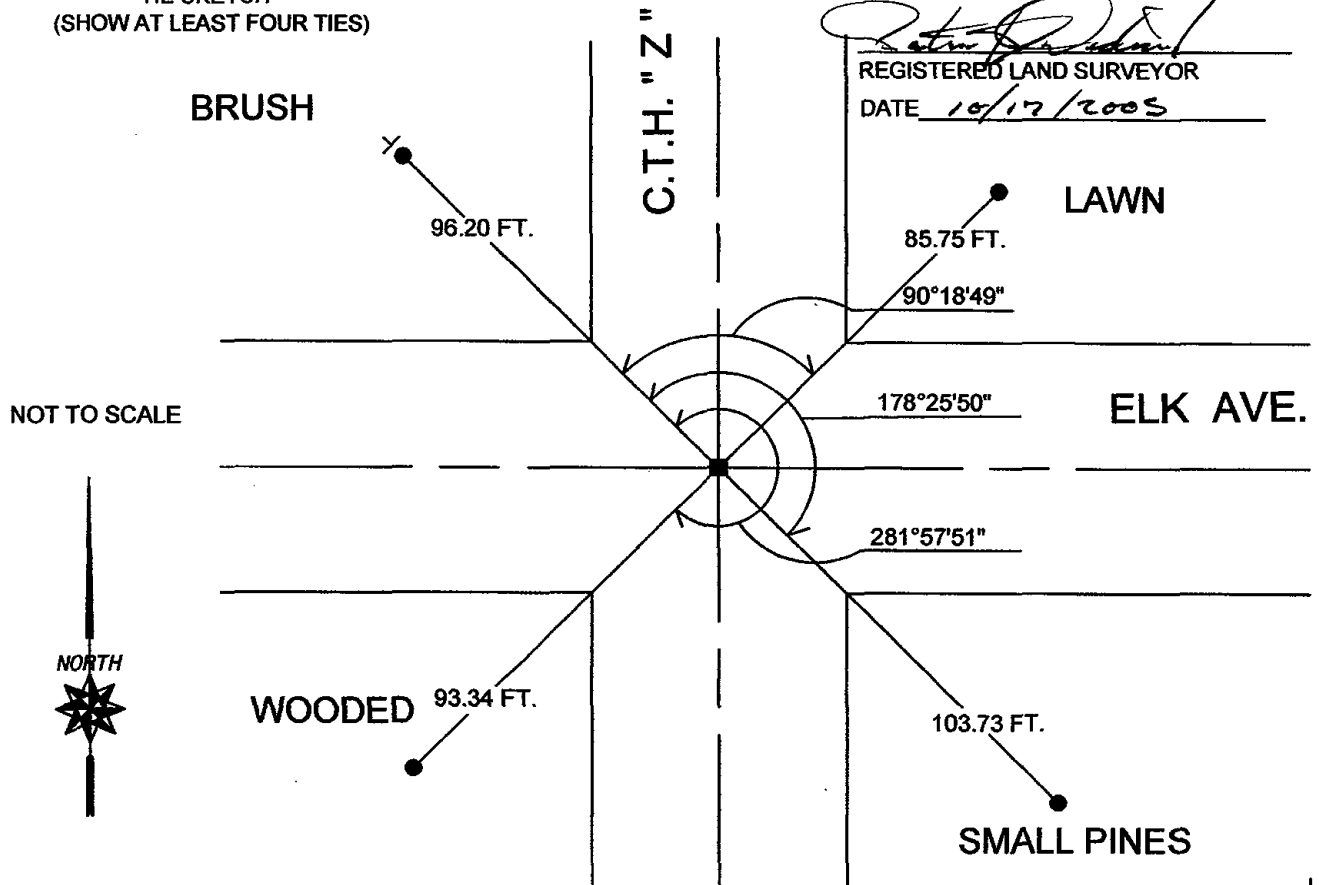
LOCATION

LEGEND

- = MAG NAIL IN ROAD SURFACE OVER STANDARD HARRISON WITH THE TOP BROKEN OFF
- = 3/4" X 24" IRON ROD SET
- ∟ = 2" CHANNEL POST WITH GOV'T SIGN.



TIE SKETCH
(SHOW AT LEAST FOUR TIES)



CERTIFIED CORNER

REGISTERED LAND SURVEYOR

DATE 10/17/2005

RECEIVED
OCT 19 2005
FBI - MEMPHIS