

## PUBLIC LAND SURVEY MONUMENT RECORD

TYPE OF MONUMENT: HARRISON  
 ADAMS COUNTY COORDINATES, NAD 83 (2007)

N. 180587.073

E. 501955.792

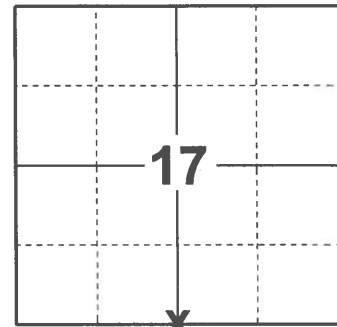
ELEVATION- - - - - DATUM - - - - -

FIELD WORK DATE: 02/01/2021

### BASIS FOR MONUMENT LOCATION

1979 - PLS 878 NO RECORD OF RESURVEYS. EXCAVATED WITH BACKHOE, FOUND NOTHING. CORNER SET ON LINE AND EQUIDISTANT BETWEEN SECTION CORNERS.

2021 - PLS 2675 FOUND HARRISON MONUMENT 4"± BELOW THE ROAD SHOULDER AND DID NOT RECOVER ANY EXISTING TIES OR WITNESSES. ACCEPTED THE HARRISON AS THE CORNER LOCATION. SET 4 NEW TIES.



**LOCATION**

(INDICATE CORNER BY "X")

SEAL:

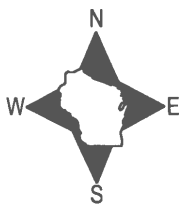


DATA SHOWN HERE ON THIS TIE SHEET IS CORRECT AND COMPLETE TO THE BEST OF MY KNOWLEDGE AND BELIEF.

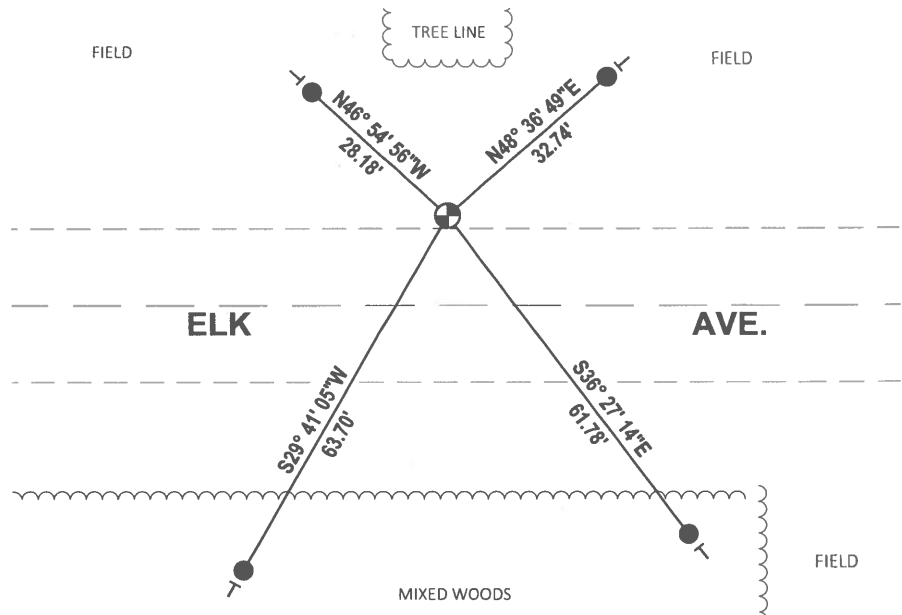
PROFESSIONAL LAND SURVEYOR

DATE 2/23/2021

### - TIE SKETCH -



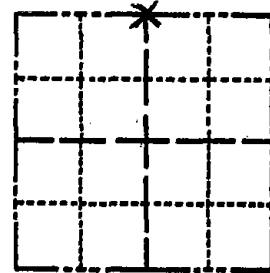
- SET 3/4" x 18" IRON REBAR, 1.50#/FT
- ⊕ FOUND HARRISON MONUMENT
- ┊ VINYL "T" POST



# Government Land Corner Certificate

ADAMS County  
 TYPE OF MONUMENT: STANDARD HARRISON  
 STATE PLANE COORDINATES: N \_\_\_\_\_  
 E \_\_\_\_\_  
 ELEVATION — M.S.L. DATUM: \_\_\_\_\_  
 THETA ANGLE: \_\_\_\_\_  
 FIELD BOOK: 77 PAGE 4  
 DRAWN BY: PAUL KIEDROWSKI

CORNER NO. 64  
 SECTION 20  
 TOWN 16N  
 RANGE 5E



LOCATION  
(Indicated by 'X')

## BASIS FOR MONUMENT LOCATION

Show info such as: History of corner, with reference to Vol. and pg., dates, surveyor; exact description of monument replaced; if location computed, by taped or EDM traverse; landowner remarks, etc. (Use reverse side if necessary)

No record of resurveys. Excavated with backhoe, found nothing. Corner set on line and equidistant between section corners.

- ALL OK 4/15/85
- 1 GONE, NOTHING AVAILABLE FOR NEW TIE
- 2-8-90 KZ-SS
- ALL OK 2-7-95 JG
- ALL OK 2-10-00 TW, SS.
- " " 3-3-05 JS-SS
- " " 7-7-10 SS

SEAL:



DATA SHOWN HERE ON  
CERTIFIED CORRECT:

6/13/79 AB Kiedrowski  
Registered Land Surveyor

DATE: \_\_\_\_\_

## TIE SKETCH

Show at least four ties, also fence lines, roads, topo, size and type of witness trees and if off road - best way to arrive at corner.

