

PUBLIC LAND SURVEY MONUMENT RECORD

TYPE OF MONUMENT: HARRISON
 ADAMS COUNTY COORDINATES, NAD 83 (2007)

N. 180638.074

E. 504590.811

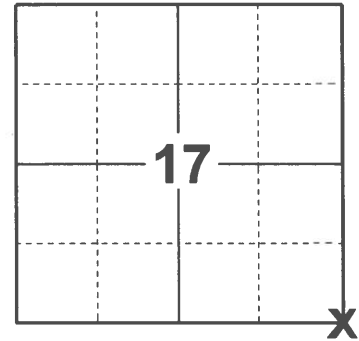
ELEVATION- - - - - DATUM - - - - -

FIELD WORK DATE: 02/01/2021

BASIS FOR MONUMENT LOCATION

1979 -PLS 878 EXCAVATED WITH BACKHOE. FOUND BOTTOM 6" OF 4"X5" SANDSTONE AND SEVERAL FRAGMENTS OVER STAIN FROM POST. NO RESURVEYS IN AREA. REPLACED STONE WITH HARRISON AND PUT STONE ALONG WEST SIDE.

2021 - PLS 2675 FOUND HARRISON MONUMENT 6"± BELOW THE GROUND AND DID NOT RECOVER ANY EXISTING TIES OR WITNESSES. ACCEPTED THE HARRISON AS THE CORNER LOCATION. SET 4 NEW TIES.



LOCATION

(INDICATE CORNER BY "X")

SEAL:

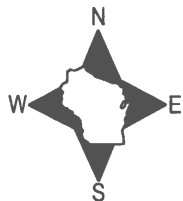


DATA SHOWN HERE ON THIS TIE SHEET IS CORRECT AND COMPLETE TO THE BEST OF MY KNOWLEDGE AND BELIEF.

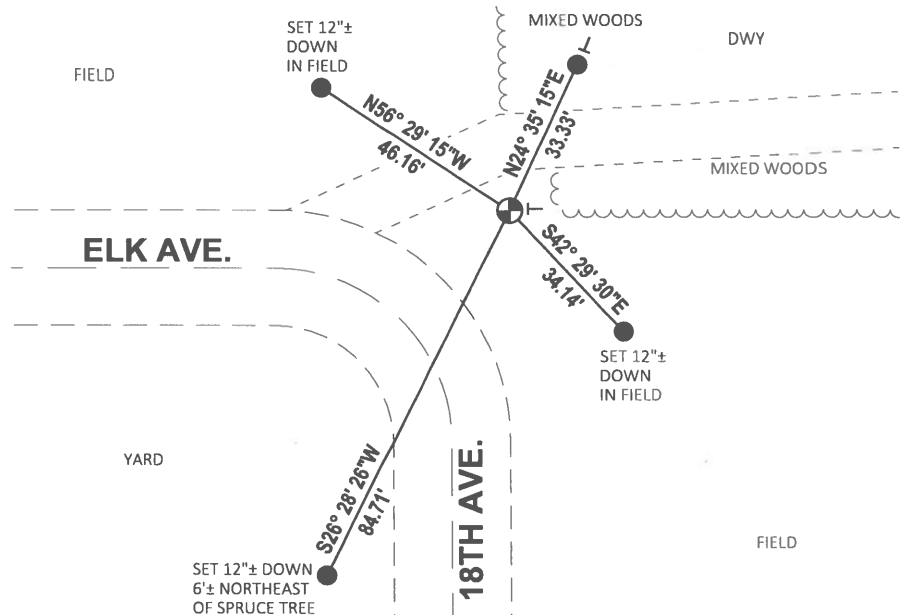
PROFESSIONAL LAND SURVEYOR

DATE 2/23/2021

TIE SKETCH



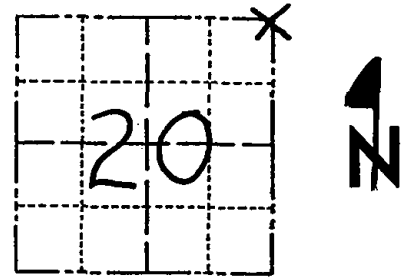
- SET 3/4" x 18" IRON REBAR, 1.50#/FT
- ⊕ FOUND HARRISON MONUMENT
- VINYL "T" POST



Government Land Corner Certificate

ADAMS County
 TYPE OF MONUMENT: **HARRISON**
 STATE PLANE COORDINATES: N _____
 E _____
 ELEVATION — M.S.L. DATUM: _____
 THETA ANGLE: _____
 FIELD BOOK: 102 PAGE 23
 DRAWN BY: B. SULLIVAN

CORNER NO. 65
 SECTION 20
 TOWN 16
 RANGE 5



LOCATION
(Indicated by 'X')

BASIS FOR MONUMENT LOCATION

Show info such as: History of corner, with reference to Vol. and pg., dates, surveyor; exact description of monument replaced; if location computed, by taped or EDM traverse; landowner remarks, etc. (Use reverse side if necessary)

SEAL:



Excavated with backhoe. Found bottom 6" of 4 x 5 sandstone and several fragments over stain from post. No resurveys in area. Replaced stone with harrison and put stone along west side.

Location verified by EDM traverse.

ALL OK 4/15/85 D.K.
 ALL OK 2-8-90 KZ-SS
 ALL OK 2-7-95 JG
 2 Good 2-10-00 T.W. S.S.
 " " 3-3-05 JS-SS

DATA SHOWN HERE ON
CERTIFIED CORRECT:

Anthony B. Kiedrowski
Registered Land Surveyor

DATE: 5/7/79

TIE SKETCH

Show at least four ties, also fence lines, roads, topo, size and type of witness trees and if off road - best way to arrive at corner.

