

PUBLIC LAND SURVEY MONUMENT RECORD

TYPE OF MONUMENT: HARRISON
 ADAMS COUNTY COORDINATES, NAD 83 (2007)

N. 180637.277

E. 507261.172

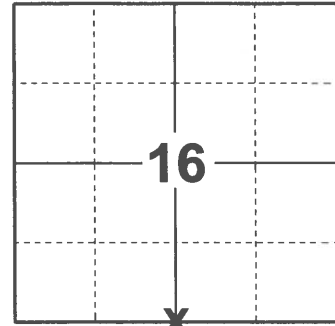
ELEVATION- - - - DATUM - - - -

FIELD WORK DATE: 02/01/2021

BASIS FOR MONUMENT LOCATION

1980 - PLS 1478 FOUND 18" LONG SAND STONE MONUMENT (5" SQUARE TOP, 10" SQUARE BOTTOM) LYING ALONG SIDE NEW FENCE CORNER POST. NEW MONUMENT SET IN DEPRESSION AT BOTTOM OF POST THAT THE STONE APPEARED TO HAVE COME FROM. NO RECORD OF ANY SURVEYS SUBSEQUENT TO THE ORIGINAL WAS FOUND FOR THIS LOCATION.

2021 - PLS 2675 FOUND HARRISON MONUMENT FLUSH WITH THE GROUND AND DID NOT RECOVER ANY EXISTING TIES OR WITNESSES. ACCEPTED THE HARRISON AS THE CORNER LOCATION AND SET 4 NEW TIES.



LOCATION

(INDICATE CORNER BY "X")

SEAL:



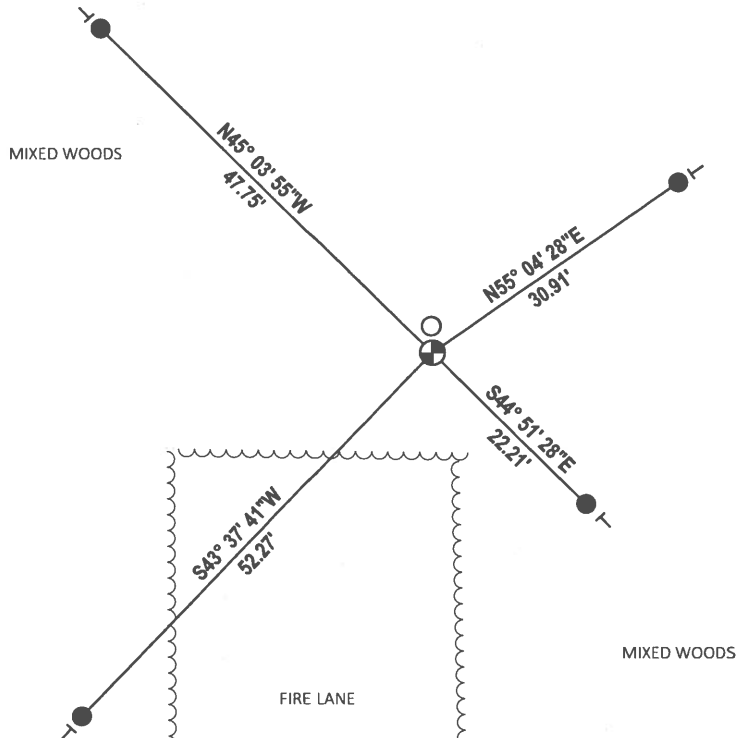
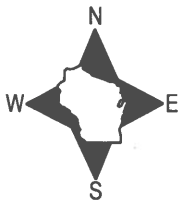
DATA SHOWN HERE ON THIS TIE SHEET IS CORRECT AND COMPLETE TO THE BEST OF MY KNOWLEDGE AND BELIEF.

PROFESSIONAL LAND SURVEYOR

DATE 2/23/2021

- TIE SKETCH

NOTE: THE CORNER LANDS 1'± SOUTH OF UTILITY POLE.



- SET 3/4" x 18" IRON REBAR, 1.50#/FT
- ⊕ FOUND HARRISON MONUMENT
- ┆ VINYL "T" POST
- UTILITY POLE

Government Land Corner Certificate

SET MAR.
5/2/80
SS

Adams County

TYPE OF MONUMENT: Harrison

STATE PLANE COORDINATES: N _____
E _____

ELEVATION — M.S.L. DATUM: _____

THETA ANGLE: _____

FIELD BOOK: 80 PAGE 40

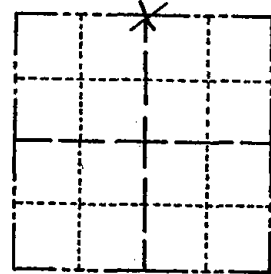
DRAWN BY: Greg Rhinehart

CORNER NO. 66

SECTION 21

TOWN 16

RANGE 5



LOCATION
(Indicated by 'X')

BASIS FOR MONUMENT LOCATION

Show info such as: History of corner, with reference to Vol. and pg., dates, surveyor; exact description of monument replaced; if location computed, by taped or EDM traverse; landowner remarks, etc. (Use reverse side if necessary)

Found 18" long sand stone monument (5" square top, 10" square bottom) lying along side new fence corner post. New monument set in depression at bottom of post that the stone appeared to have come from. No record of any surveys subsequent to the original was found for this location.

2000 - VERY LITTLE FENCE
EVIDENCE REMAINING

SEAL:



DATA SHOWN HERE ON
CERTIFIED CORRECT:

Gregory P. Rhinehart
Registered Land Surveyor

DATE: 2/26/80

TIE SKETCH

Show at least four ties, also fence lines, roads, topo, size and type of witness trees and if off road - best way to arrive at corner.

