

PUBLIC LAND SURVEY MONUMENT RECORD

TYPE OF MONUMENT: HARRISON
 ADAMS COUNTY COORDINATES, NAD 83 (2007)

N. 180621.822

E. 509918.431

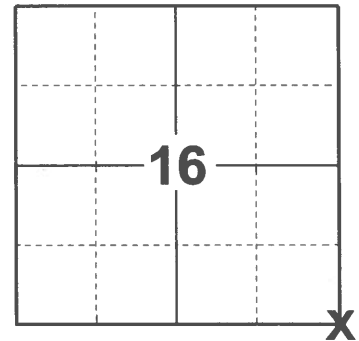
ELEVATION- - - - - DATUM - - - - -

FIELD WORK DATE: 01/25/2021

BASIS FOR MONUMENT LOCATION

1979 - PLS 1478 SET CORNER ON THE CENTERLINE OPPOSITE FENCE LINE TO THE NORTH. THIS LOCATION IS VERY NEARLY PROPORTIONATE IN THE EAST WEST DIRECTION AND IS ON A LINE EXTENDED OF A FENCE HEADING EAST FROM THE NORTHWEST CORNER OF SECTION 21. THIS CORNER ALSO FALLS VERY CLOSE TO ORIGINAL RECORD DISTANCES FROM THE SOUTH.

2021 - PLS 2675 FOUND HARRISON MONUMENT 16"± BELOW THE ROAD SURFACE AND 2 WITNESS TREES. THE MONUMENT AGREES WITH BOTH WITNESS TREES. ACCEPTED THE HARRISON AS THE CORNER LOCATION. SET 4 NEW TIES AND MEASURED TO THE EXISTING WITNESS TREES.



LOCATION

(INDICATE CORNER BY "X")

SEAL:

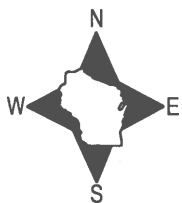


DATA SHOWN HERE ON THIS TIE SHEET IS CORRECT AND COMPLETE TO THE BEST OF MY KNOWLEDGE AND BELIEF.

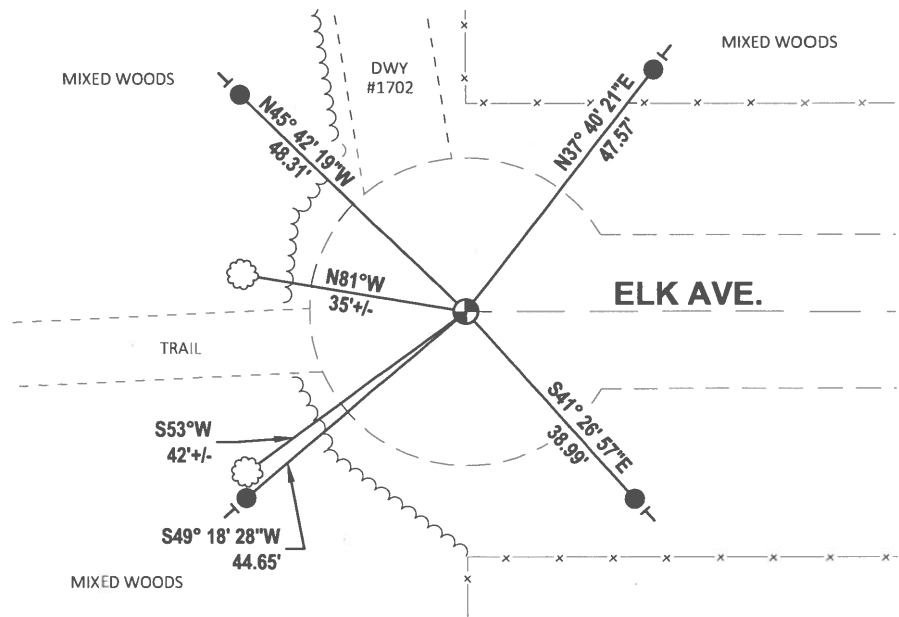
PROFESSIONAL LAND SURVEYOR

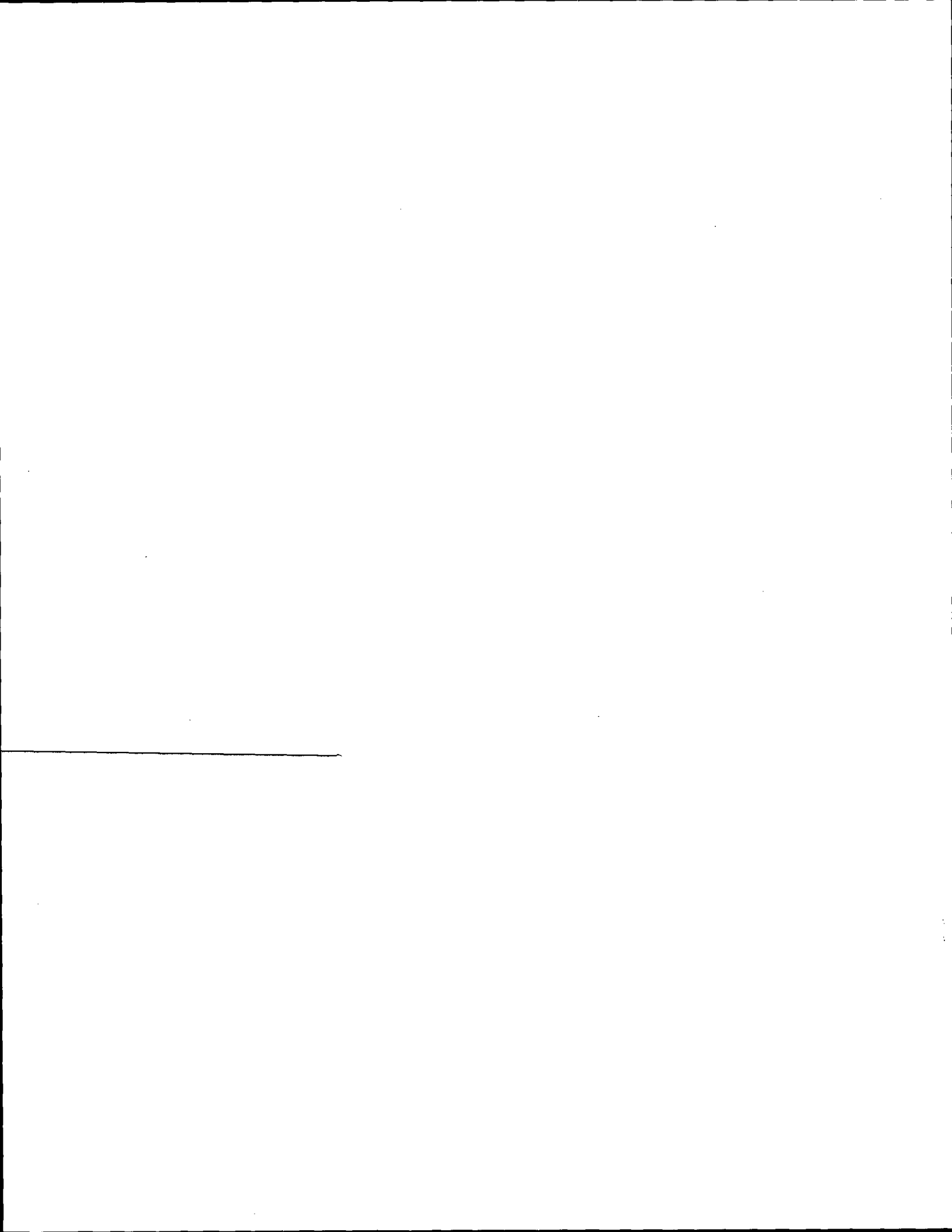
DATE 2/23/2021

- TIE SKETCH -



- SET 3/4" x 18" IRON REBAR, 1.50#/FT
- ⊕ FOUND HARRISON MONUMENT
- VINYL "T" POST
- ☉ WITNESS TREE

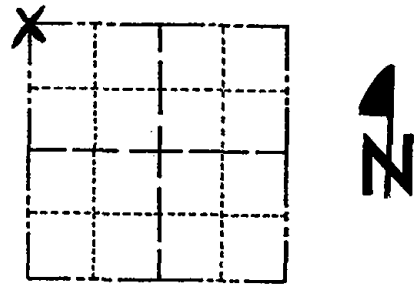




Government Land Corner Certificate

ADAMS County
 TYPE OF MONUMENT: HARRISON
 STATE PLANE COORDINATES: N _____
 E _____
 ELEVATION — M.S.L. DATUM: _____
 THETA ANGLE: _____
 FIELD BOOK: 54 PAGE 63
 DRAWN BY: R. NUBER

CORNER NO. 67
 SECTION 22
 TOWN 16
 RANGE 5



LOCATION (Indicated by 'X')

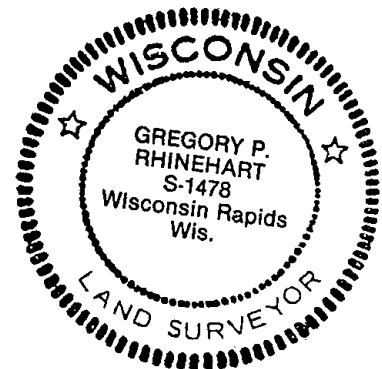
BASIS FOR MONUMENT LOCATION

Show info such as: History of corner, with reference to Vol. and pg., dates, surveyor; exact description of monument replaced; if location computed, by taped or EDM traverse; landowner remarks, etc. (Use reverse side if necessary)

Set corner on the centerline opposite fence line to the north. this location is very nearly proportionate in the east west direction and is on a line extended of a fence heading east from the NW CORNER of Section 21. This corner also falls very close to original record distances from the south.

ALL OK 4/15/85 DK.
 ALL OK 2-8-90 KZ-SS
 " " 2-7-95 JG
 ALL OK 2-10-00 TW-SS

SEAL:



DATA SHOWN HERE ON CERTIFIED CORRECT:

Gregory P Rhinehart
Registered Land Surveyor

DATE: 9/4/79

TIE SKETCH

Show at least four ties, also fence lines, roads, topo, size and type of witness trees and if off road - best way to arrive at corner.

