

PUBLIC LAND SURVEY MONUMENT RECORD

TYPE OF MONUMENT: HARRISON
ADAMS COUNTY COORDINATES, NAD 83 (2007)

N. 180619.631

E. 512568.215

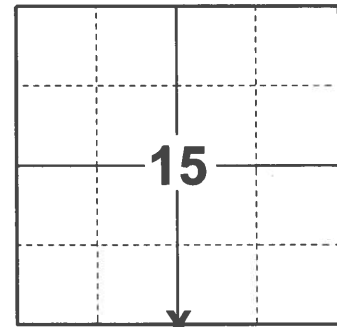
ELEVATION- - - - - DATUM - - - - -

FIELD WORK DATE: 01/25/2021

BASIS FOR MONUMENT LOCATION

1979 - PLS 1478 SET EQUIDISTANT AND ON LINE BETWEEN ADJACENT SECTION CORNERS. EXCAVATION AT THE CENTERLINE-CENTERLINE LOCATION YIELDED NO EVIDENCE OF ANY PREVIOUS MONUMENTATION.

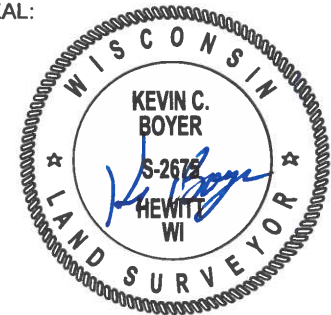
2021 - PLS 2675 FOUND HARRISON MONUMENT 3"± BELOW THE ROAD SURFACE AND 1 WITNESS. THE MONUMENT AGREES WITH THE WITNESS. ACCEPTED THE HARRISON AS THE CORNER LOCATION. SET 4 TIES AND MEASURED TO THE EXISTING WITNESS.



LOCATION

(INDICATE CORNER BY "X")

SEAL:



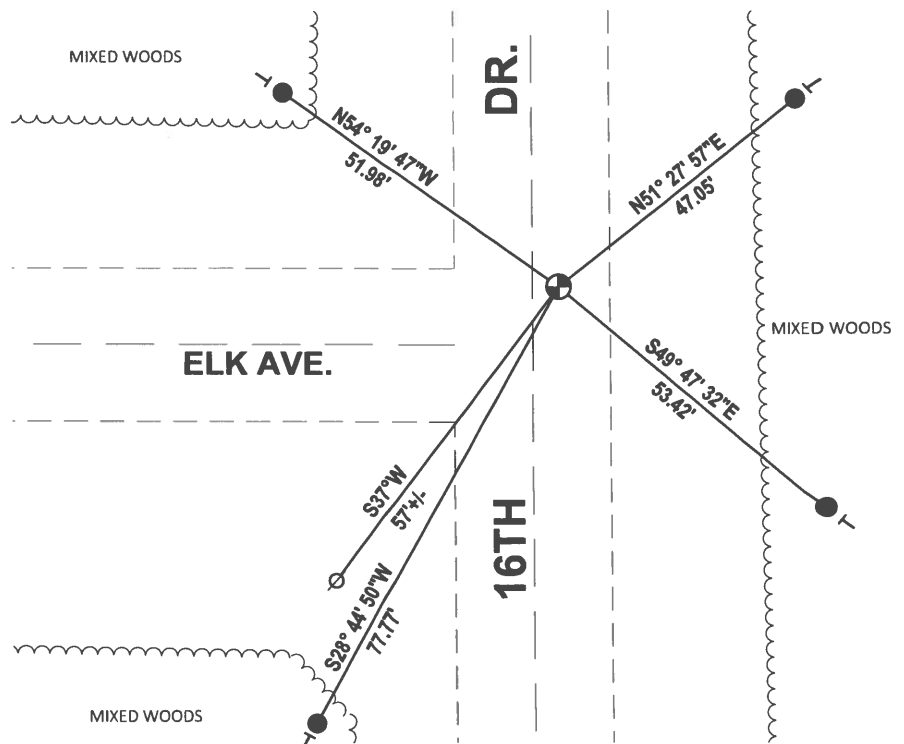
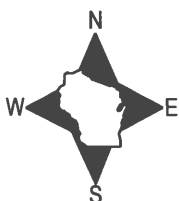
DATA SHOWN HERE ON THIS TIE SHEET IS CORRECT AND COMPLETE TO THE BEST OF MY KNOWLEDGE AND BELIEF.

PROFESSIONAL LAND SURVEYOR

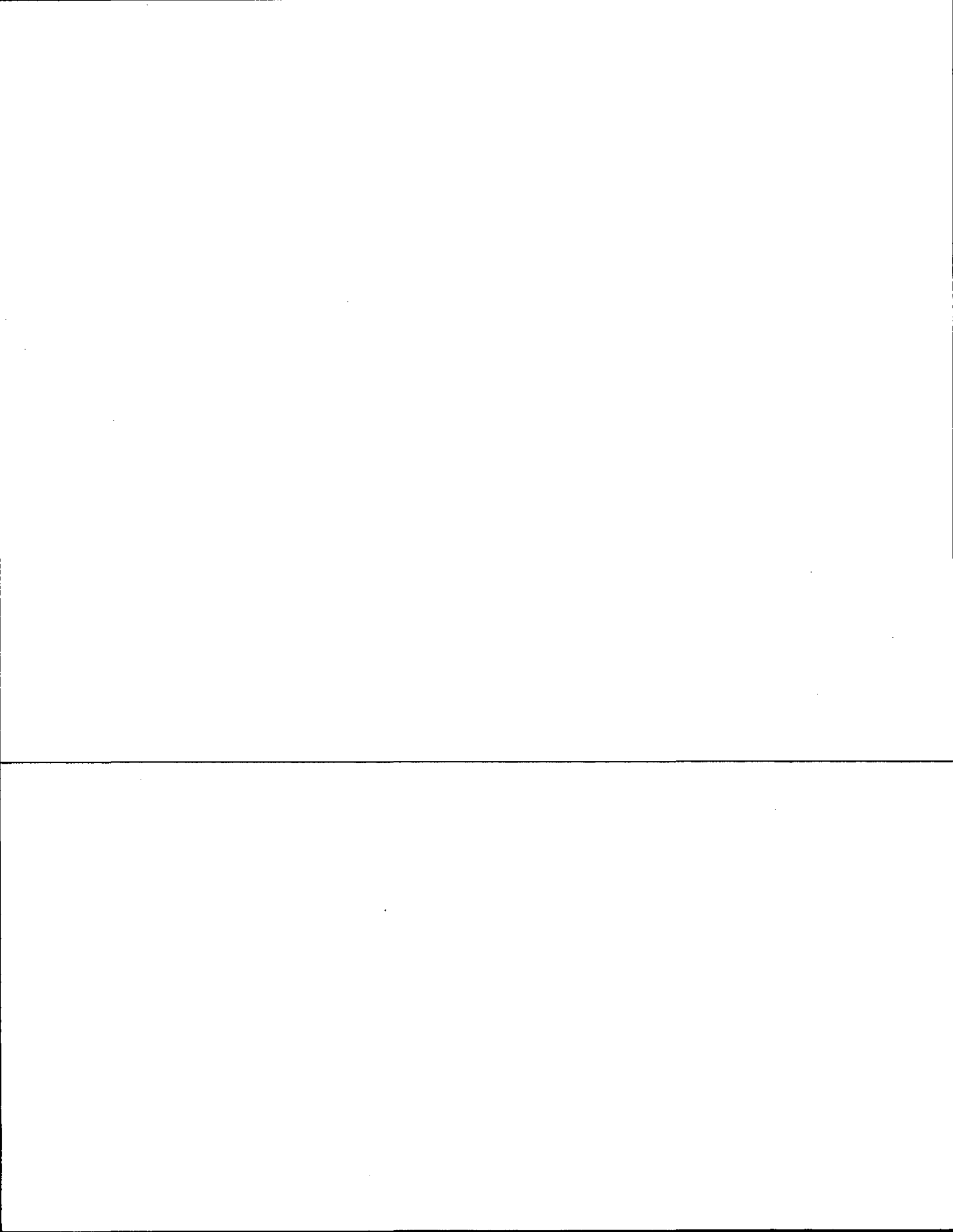
DATE 2/23/2021

- TIE SKETCH -

NOTE: THE CORNER LANDS 6"± EAST OF CENTERLINE OF 16TH DR.



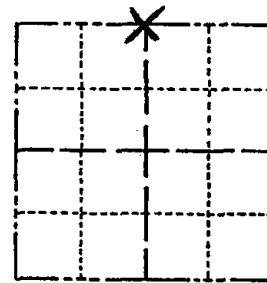
- SET 3/4" x 18" IRON REBAR, 1.50#/FT
- ⊕ FOUND HARRISON MONUMENT
- ⊘ WITNESS POWER POLE
- ⊣ VINYL "T" POST



Government Land Corner Certificate

ADAMS County
 TYPE OF MONUMENT: HARRISON
 STATE PLANE COORDINATES: N _____
 E _____
 ELEVATION — M.S.L. DATUM: _____
 THETA ANGLE: _____
 FIELD BOOK: 54 PAGE 62
 DRAWN BY: R. NUBER

CORNER NO. 68
 SECTION 22
 TOWN 16
 RANGE 5



LOCATION
(Indicated by 'X')

BASIS FOR MONUMENT LOCATION

Show info such as: History of corner, with reference to Vol. and pg., dates, surveyor; exact description of monument replaced; if location computed, by taped or EDM traverse; landowner remarks, etc. (Use reverse side if necessary)

Set equidistant and on line between adjacent section corners.

Excavation at the centerline-centerline location yielded no evidence of any previous monumentation.

ALL OK 4/15/85 DK.
 ALL OK 2-8-90 KZ-SS
 " " 2-7-95 JG
 ALL OK 2-10-00 TW.S.S.
 #1 NEW 3-3-05 S.S. J.S.

SEAL:



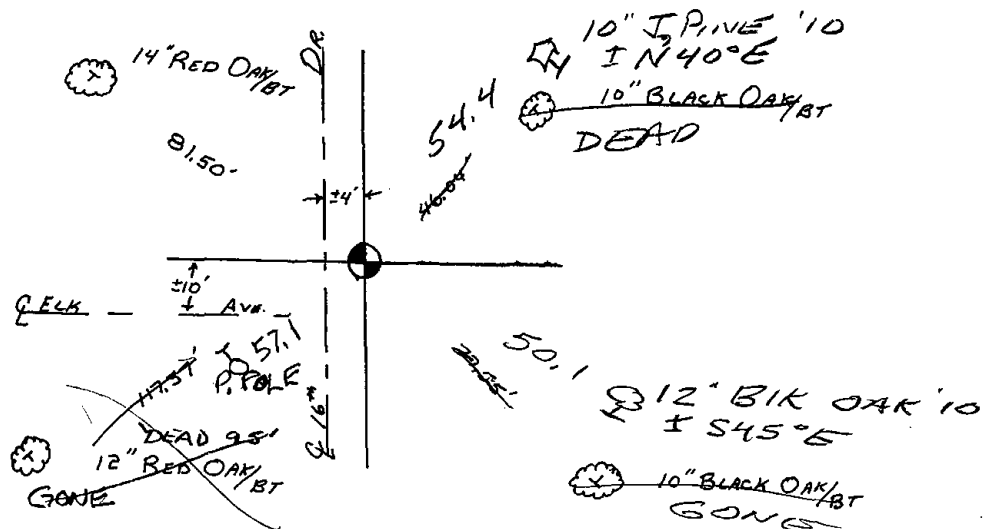
DATA SHOWN HERE ON
CERTIFIED CORRECT:

Gregory P. Rhinehart
Registered Land Surveyor

DATE: 9/4/79

TIE SKETCH

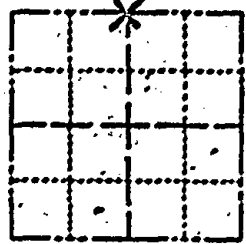
Show at least four ties, also fence lines, roads, topo, size and type of witness trees and if off road - best way to arrive at corner.



Government Land Corner Certificate

Adams County
 TYPE OF MONUMENT: HARRISON
 STATE PLANE COORDINATES: N _____
 E _____
 ELEVATION — M.S.L. DATUM: _____
 THETA ANGLE: _____
 FIELD BOOK: 54 PAGE 62
 DRAWN BY: R. Niess

CORNER NO. 68
 SECTION 22
 TOWN 16
 RANGE 5



LOCATION
 (Indicated by 'X')

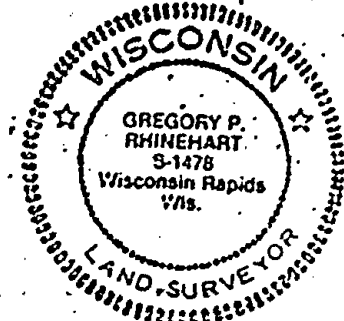
BASIS FOR MONUMENT LOCATION

Show info such as: History of corner, with reference to Vol. and pg., dates, surveyor; exact description of monument replaced; if location computed, by typed or EDM traverse; landowner remarks, etc. (Use reverse side if necessary)

Set equidistant and on line between adjacent section corners.

Excavation at the center-line-centerline location yielded no evidence of any previous monumentation.

SEAL:



DATA SHOWN HERE ON
 CERTIFIED CORRECT:

Gregory P. Rhinehart
 Registered Land Surveyor

DATE: 9/9/79

Ken Carlson Sept 2 '86

TIE SKETCH

Show at least four ties, also fence lines, roads, topo, size and type of witness trees and if off road - best way to arrive at corner.

