

PUBLIC LAND SURVEY MONUMENT RECORD

TYPE OF MONUMENT: HARRISON
ADAMS COUNTY COORDINATES, NAD 83 (2007)

N. 180587.786

E. 517864.412

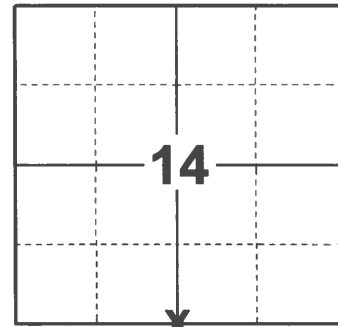
ELEVATION- _____ DATUM _____

FIELD WORK DATE: 01/22/2021

BASIS FOR MONUMENT LOCATION

1976 - PLS 1103 RAN EDM/T2 TRAVERSE AROUND SECTION 14 TO DETERMINE SEARCH AREAS FOR INVESTIGATION. FOUND 6" DIAMETER BY 5' LONG POINTED, DRIVEN WOODEN POST WITH BLAZES ON 2 SIDES. THIS POST IS SIMILAR TO THOSE FOUND AT THE EAST QUARTER AND NORTHEAST CORNERS OF THIS SECTION. COULD FIND NO OTHER EVIDENCE OF THE ORIGINAL CORNER, REMONUMENTATION OR ACCESSORIES. REPLACED POST WITH HARRISON ON 11-17-1976.

2021 - PLS 2675 FOUND A HARRISON MONUMENT 4"± BELOW THE MARSH SURFACE AND 5 WITNESSES. THE MONUMENT AGREES WITH ALL 5 WITNESSES. ACCEPTED THE HARRISON AS THE CORNER LOCATION. SET 4 NEW TIES AND MEASURED TO THE EXISTING WITNESSES.



LOCATION

(INDICATE CORNER BY "X")

SEAL:

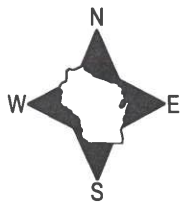


DATA SHOWN HERE ON THIS TIE SHEET IS CORRECT AND COMPLETE TO THE BEST OF MY KNOWLEDGE AND BELIEF.

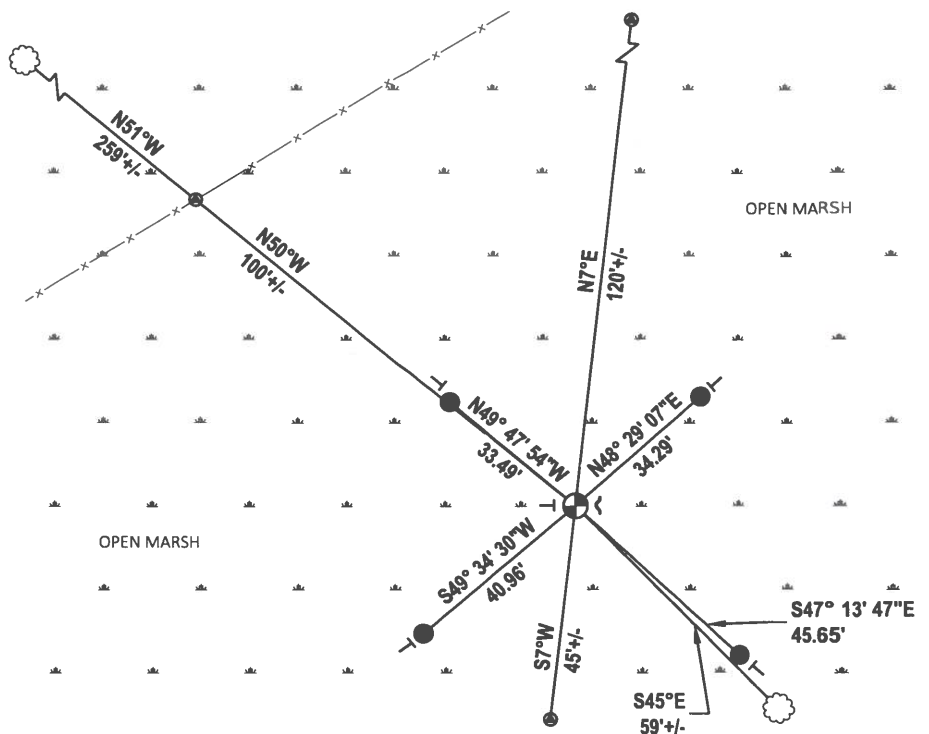
PROFESSIONAL LAND SURVEYOR

DATE 2/23/2021

- TIE SKETCH



- SET 3/4" x 18" IRON REBAR, 1.50#/FT
- ⊕ FOUND HARRISON MONUMENT
- ┘ STEEL FENCE POST
- └ VINYL "T" POST
- ☼ WITNESS TREE
- ⊙ LITE METAL POST WITH DND SIGNS



ADAMS COUNTY

Survey Monument Record

TYPE OF MONUMENT: Standard Harrison

STATE PLANE COORDINATES: N _____

E _____

ELEVATION — M.S.L. DATUM: _____

THETA ANGLE: _____

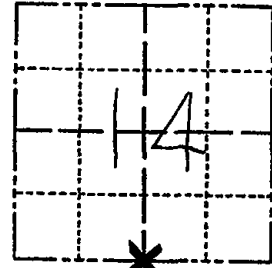
FIELD BOOK: 37 PAGE 70

CORNER NO. 70

SECTION 14

TOWN 16

RANGE 5



LOCATION (Indicated by 'X')

SEAL:



BASIS FOR MONUMENT LOCATION

(Use reverse side if necessary)

Show info such as: History of corner, with reference to Vol. and pg. dates, surveyor; exact description of monument replaced; if location computed, by taped or EDM traverse; landowner remarks, etc.

Ran EDM/T2 traverse around Section 14 to determine search areas for investigation.

Found 6" diameter by 5' long pointed, driven wooden post with blazes on 2 sides. This post is similar to those found at the East Quarter and ~~South~~ ^{NORTH} Southeast corners of this section.

Could find no other evidence of the original corner, remonumentation or accessories.

Replaced post with Harrison on 11-17-76.

MON. & TIES OK 1/13/81 RN-SK

" " 11-7-85 GR-SS

FOR 1990'S UPDATE NEED TO TAKE MONUMENT MATERIALS WITH. PREF. (STEEL FENCE POST) OK 1-9-90 KZ-GR

4-NEW, 1-12-06, JG-SS

CERTIFIED CORRECT:

Dale C Hagen

Registered Land Surveyor

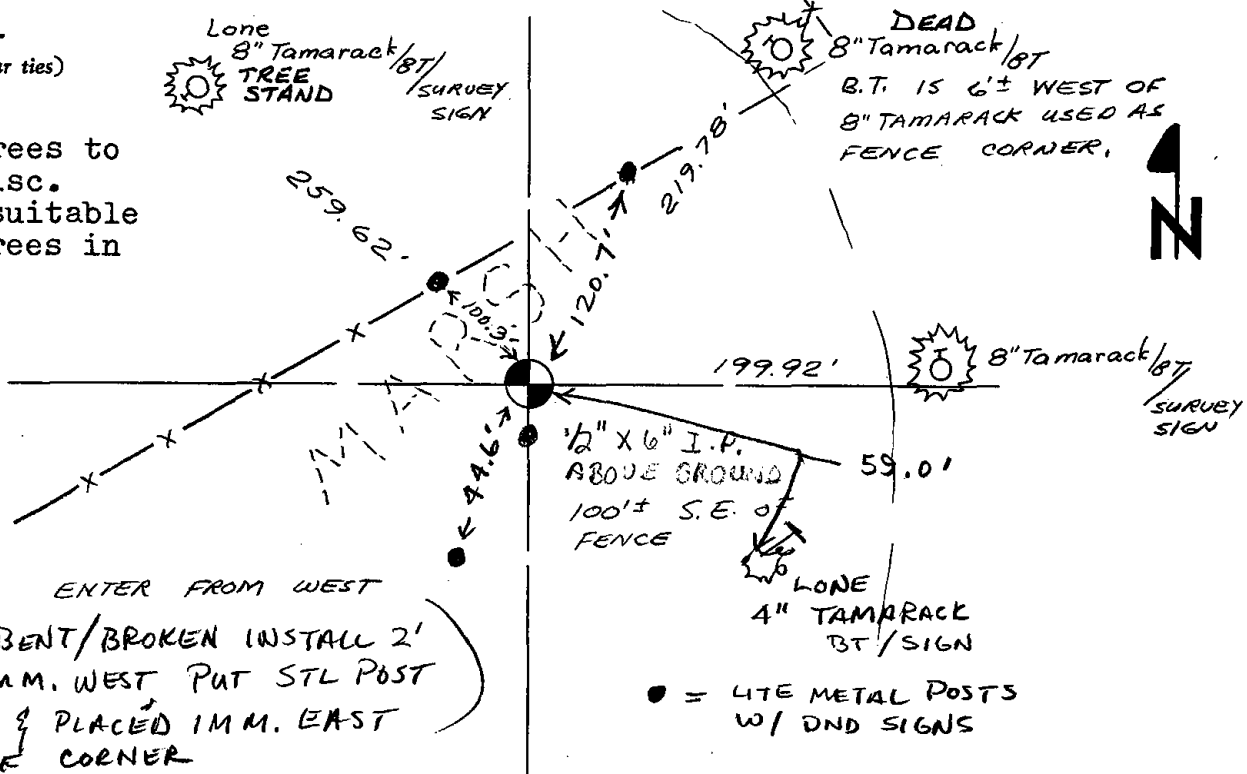
DATE: 11-30-76

TIE SKETCH

(Show at least four ties)

NOTE

Ties in trees to nail in disc. No other suitable bearing trees in vicinity.



ENTER FROM WEST
1" IP FD BENT/BROKEN INSTALL 2' SECTION IMM. WEST PUT STL POST IN 4' SEC & PLACED IMM. EAST OF CORNER