

14
SECTION

16
TOWN

05
RANGE

ADAMS COUNTY

COUNTY CORNER NO: 71

ROMPORTOL ID: 41605140000

PUBLIC LAND SURVEY MONUMENT RECORD

TYPE OF MONUMENT: HARRISON
ADAMS COUNTY COORDINATES, NAD 83 (2007)

N. 180595.159

E. 520605.174

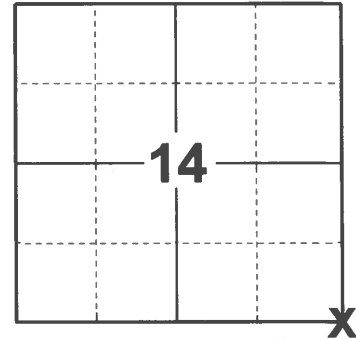
ELEVATION- DATUM

FIELD WORK DATE: 01/19/2021

BASIS FOR MONUMENT LOCATION

1976 - PLS 1103 RAN EDM/T2 TRAVERSE AROUND SECTION 14 TO DETERMINE SEARCH AREAS FOR INVESTIGATION. FOUND 6" DIAMETER BY 5' LONG WOODEN POST, BLAZED ON SIDES, WITH POINTED BOTTOM DRIVEN IN SWAMP. THIS POST IS SIMILAR TO THOSE FOUND AT THE SOUTH AND EAST QUARTER CORNERS OF THIS SECTION. COULD FIND NO EVIDENCE OF THE ORIGINAL BEARING TREES, OR SUBSEQUENT REMONUMENTATION OTHER THAN POST. REPLACED POST WITH HARRISON OF 11-17-1976.

2021 - PLS 2675 FOUND A HARRISON MONUMENT 2"± BELOW THE MARSH SURFACE AND DID NOT RECOVER ANY EXISTING TIES OR WITNESSES. ACCEPTED THE HARRISON AS THE CORNER LOCATION. SET 4 NEW TIES.



LOCATION

(INDICATE CORNER BY "X")

SEAL:

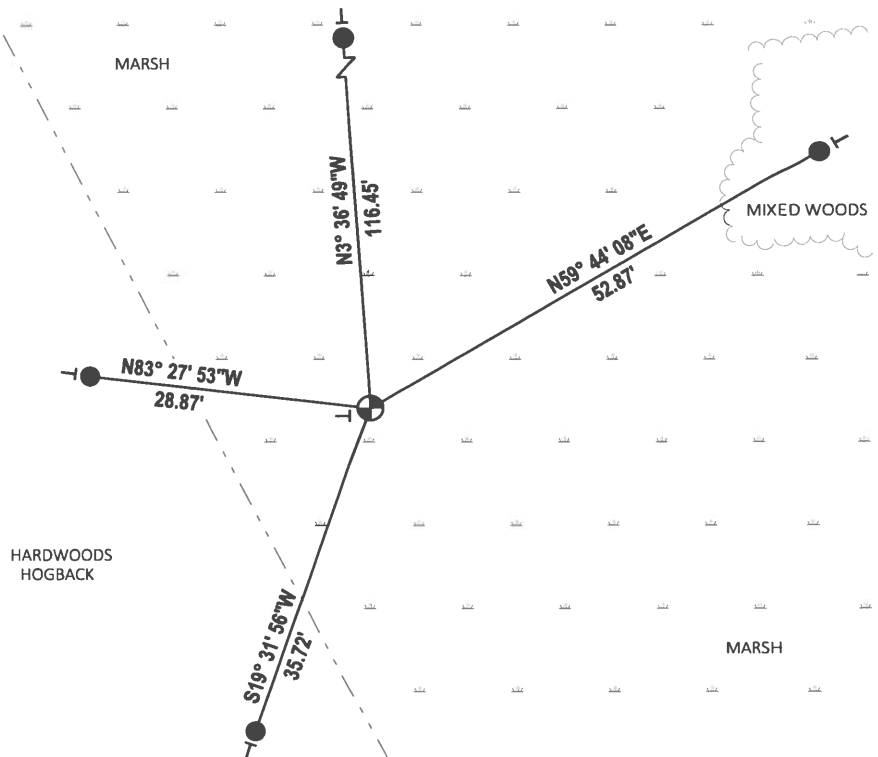
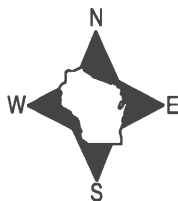


DATA SHOWN HERE ON THIS TIE SHEET IS CORRECT AND COMPLETE TO THE BEST OF MY KNOWLEDGE AND BELIEF.

PROFESSIONAL LAND SURVEYOR

DATE 2/23/2021

- TIE SKETCH



- SET 3/4" x 18" IRON REBAR, 1.50#/FT
- ⊕ FOUND HARRISON MONUMENT
- ┊ VINYL "T" POST

ADAMS COUNTY

Survey Monument Record

TYPE OF MONUMENT: Standard Harrison

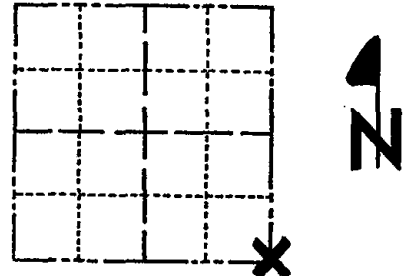
STATE PLANE COORDINATES: N 43°51'43.3"
HANO H&L O P S E 089°51'26.8"

ELEVATION — M.S.L. DATUM: _____

THETA ANGLE: _____

FIELD BOOK: 37 PAGE 70

CORNER NO. 1073 (71)
SECTION 14
TOWN 16
RANGE 5



LOCATION
(Indicated by 'X')

SEAL:



BASIS FOR MONUMENT LOCATION

(Use reverse side if necessary)

Show info such as: History of corner, with reference to Vol. and pg, dates, surveyor; exact description of monument replaced; if location computed, by taped or EDM traverse; landowner remarks, etc.

Ran EDM/T2 traverse around Section 14 to determine search areas for investigation.

Found 6" Diameter by 5' long wooden post, blazed on sides, with pointed bottom driven in swamp. This post is similar to those found at the South and East Quarter corners of this section.

Could find no evidence of the original bearing trees, or subsequent remonumentation other than post.

Replaced post with Harrison on 11-17-76.

MON OK 1-9-81 TH-NJ
" " 2-14-85 GR.
OK 1-9-90 GR
SEE CARLSON 7-13-90 NEXT PAGE
1-GONE, 1-NEW 12-20-85, -JG
12-09-10 GR - OK

CERTIFIED CORRECT:

Dale C Hagen
Registered Land Surveyor
DATE: 11-30-76

TIE SKETCH

(Show at least four ties)

NOTE:
Ties in trees to nail in disc. No other bearing trees are available.

