

20
SECTION

16
TOWN

05
RANGE

ADAMS COUNTY

COUNTY CORNER NO: 76

ROMPORTOL ID: 4160520200

PUBLIC LAND SURVEY MONUMENT RECORD

TYPE OF MONUMENT: HARRISON

ADAMS COUNTY COORDINATES, NAD 83 (2007)

N. 177967.798

E. 504613.700

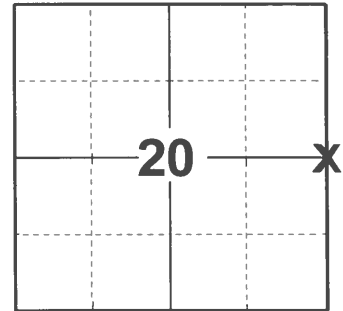
ELEVATION- _____ DATUM _____

FIELD WORK DATE: 02/16/2021

BASIS FOR MONUMENT LOCATION

1977 - PLS 878 EXCAVATED WITH BACKHOE. FOUND DEFINITE STAIN FROM ORIGINAL POST. LOCATION VERIFIED BY EDM TRAVERSE.

2021 - PLS 2675 FOUND HARRISON 4"± BELOW THE ROAD SURFACE AND DID NOT RECOVER ANY EXISTING TIES OR WITNESSES. ACCEPTED THE HARRISON AS THE CORNER LOCATION AND SET 4 NEW TIES.



LOCATION

(INDICATE CORNER BY "X")

SEAL:



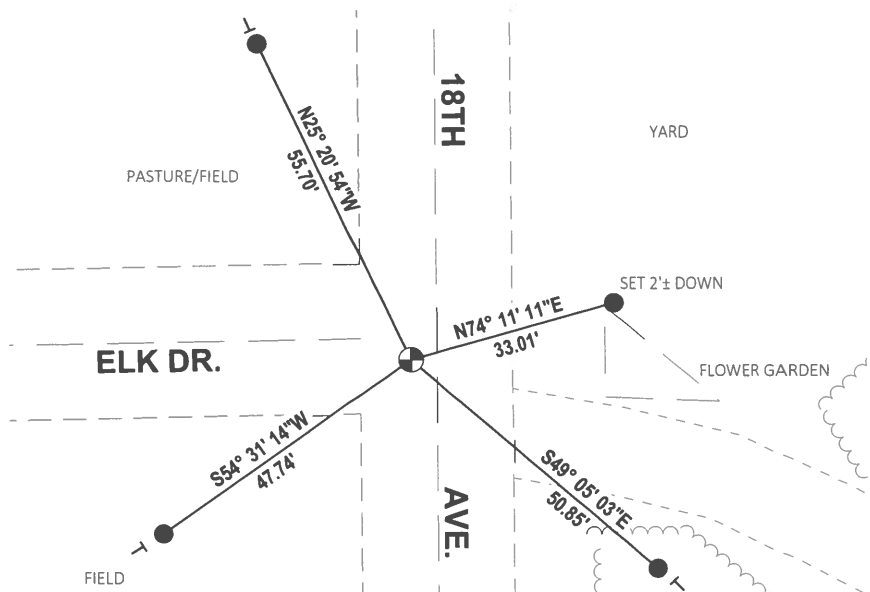
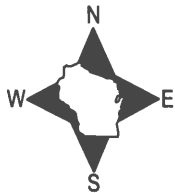
DATA SHOWN HERE ON THIS TIE SHEET IS CORRECT AND COMPLETE TO THE BEST OF MY KNOWLEDGE AND BELIEF.

PROFESSIONAL LAND SURVEYOR

DATE 3/3/2021

TIE SKETCH

NOTE: THE CORNER LANDS 4'± WEST OF 18TH AVE. CENTERLINE AND 3'± SOUTH OF ELK DR. CENTERLINE.

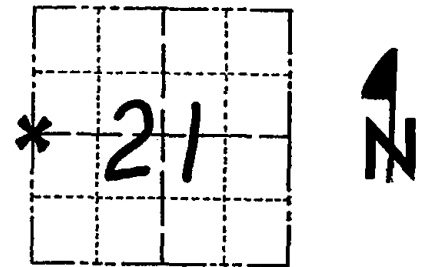


- SET 3/4" x 18" IRON REBAR, 1.50#/FT
- ⊕ FOUND HARRISON MONUMENT
- ┊ VINYL "T" POST

Government Land Corner Certificate

ADAMS County
 TYPE OF MONUMENT: HARRISON STO.
 STATE PLANE COORDINATES: N _____
 E _____
 ELEVATION — M.S.L. DATUM: _____
 THETA ANGLE: — (101) (116)
 FIELD BOOK: 54 PAGE 38
 DRAWN BY: SCOTT SORENSEN

CORNER NO. 76
 SECTION 21
 TOWN 16
 RANGE 5



LOCATION
(Indicated by 'X')

BASIS FOR MONUMENT LOCATION

Show info such as: History of corner, with reference to Vol. and pg., dates, surveyor; exact description of monument replaced; if location computed, by taped or EDM traverse; landowner remarks, etc. (Use reverse side if necessary)

Excavated with backhoe. Found definite stain from original post. Location verified by EDM traverse.

SEAL:



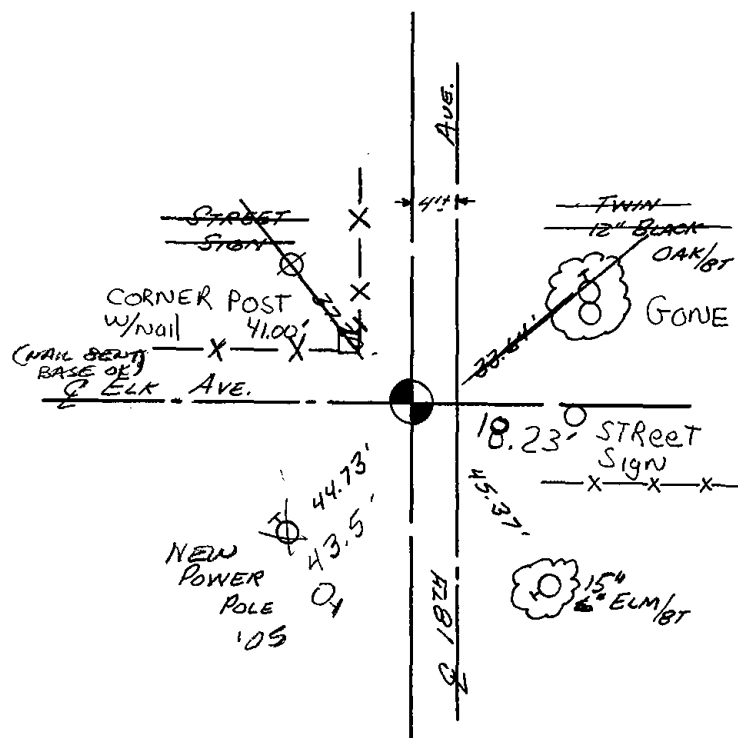
DATA SHOWN HERE ON
CERTIFIED CORRECT:

Anthony B. Kiedrowski
Registered Land Surveyor

DATE: 11/5/77

TIE SKETCH

Show at least four ties, also fence lines, roads, topo, size and type of witness trees' and if off road - best way to arrive at corner.



MAINTENANCE RECORD

Date	Init.	Remarks
10/2/80	KV-SK	COR. OK
4/15/85	OK	2 GONE 2 NEW
2-8-90	KZ-SS	OK
2-7-95	JG	OK
2-10-00	TW-SS	ALL OK
3-3-05	JS-SS	1 NEW TIE
7-7-10	SS	OK