

PUBLIC LAND SURVEY MONUMENT RECORD

TYPE OF MONUMENT: HARRISON
 ADAMS COUNTY COORDINATES, NAD 83 (2007)

N. 177981.319

E. 509929.338

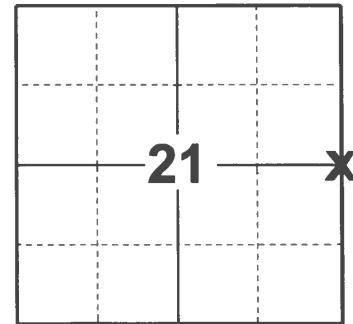
ELEVATION- - - - - DATUM - - - - -

FIELD WORK DATE: 02/03/2021

BASIS FOR MONUMENT LOCATION

1979 - PLS 1478 SET CORNER EQUIDISTANT AND ON LINE BETWEEN ADJACENT SECTION CORNERS. SEARCH OF THE AREA YIELDED NO EVIDENCE OF ANY PREVIOUS MONUMENTATION.

2021 - PLS 2675 FOUND HARRISON MONUMENT FLUSH WITH THE MARSH AND 3 WITNESS TREES. THE MONUMENT AGREES WITH ALL 3 WITNESS TREES. ACCEPTED THE HARRISON AS THE CORNER LOCATION. SET 4 NEW TIES AND MEASURED TO THE WITNESS TREES.



LOCATION
 (INDICATE CORNER BY "X")

SEAL:

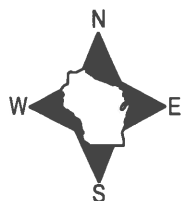


DATA SHOWN HERE ON THIS TIE SHEET IS CORRECT AND COMPLETE TO THE BEST OF MY KNOWLEDGE AND BELIEF.

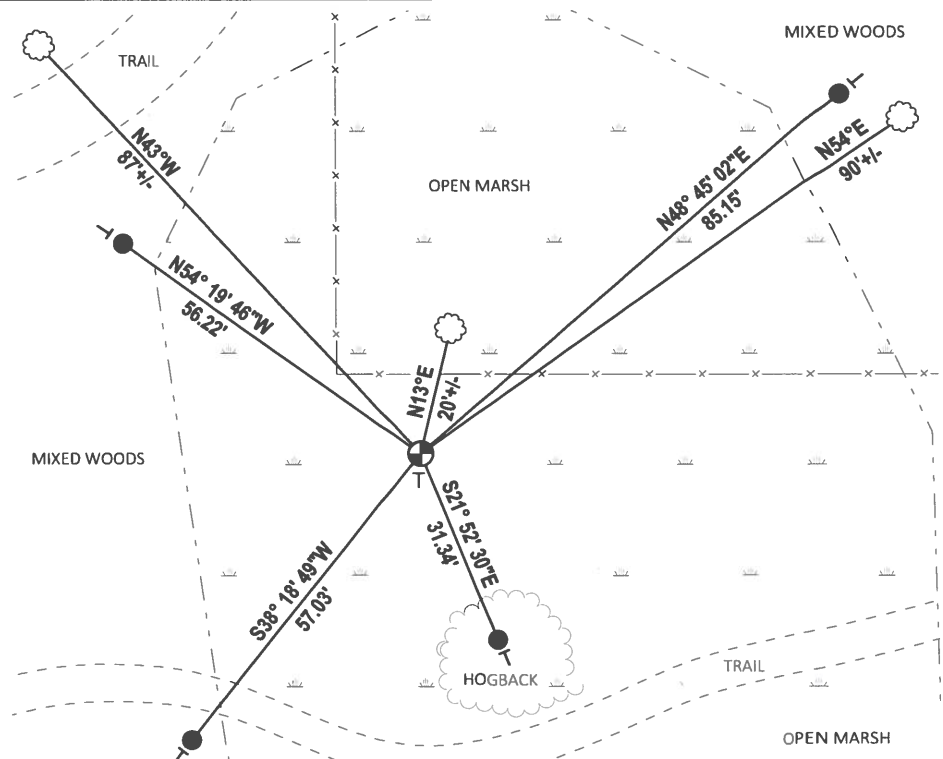
PROFESSIONAL LAND SURVEYOR

DATE 2/23/2021

- TIE SKETCH



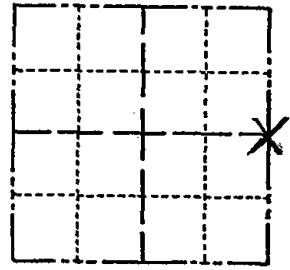
- SET 3/4" x 18" IRON REBAR, 1.50#/FT
- ⊕ FOUND HARRISON MONUMENT
- ┆ VINYL "T" POST
- ☁ WITNESS TREE



Government Land Corner Certificate

ADAMS County
 TYPE OF MONUMENT: HARRISON
 STATE PLANE COORDINATES: N _____
 E _____
 ELEVATION — M.S.L. DATUM: _____
 THETA ANGLE: _____
 FIELD BOOK: 54 PAGE 62
 DRAWN BY: R. NUBER

CORNER NO. 77
 SECTION 21
 TOWN 16
 RANGE 5



LOCATION (Indicated by 'X')

BASIS FOR MONUMENT LOCATION

Show info such as: History of corner, with reference to Vol. and pg., dates, surveyor; exact description of monument replaced; if location computed, by taped or EDM traverse; landowner remarks, etc. (Use reverse side if necessary)

Set corner equidistant and on line between adjacent section corners. Search of the area yielded no evidence of any previous monumentation.

SEAL:



DATA SHOWN HERE ON CERTIFIED CORRECT:

Gregory P. Rhinehart
Registered Land Surveyor

DATE: 9/9/79

TIE SKETCH

Show at least four ties, also fence lines, roads, topo, size and type of witness trees' and if off road - best way to arrive at corner.

ENTER FROM NORTH - FOLLOW RIDGE
 EAST OF MARSH - FIND NEW
 FENCE AT 1320±' FOLLOW
 FENCE WEST, FIND OLD FENCE
 CORNER NEAR MIDDLE
 OF MARSHY AREA
 FOLLOW FENCE SOUTH
 TO ARRIVE AT CORNER
 BRUSHED LINE VISIBLE
 10± EAST OF FENCE
 FOR SOUTHERLY 1000±'
 11-5-85 S.S.

Fo 3/4" Alum. PIPE
 7' TALL @ MON

