

PUBLIC LAND SURVEY MONUMENT RECORD

TYPE OF MONUMENT: 2-3/8" O.D. IRON PIPE
 ADAMS COUNTY COORDINATES, NAD 83 (2007)

N. 177970.337

E. 523206.193

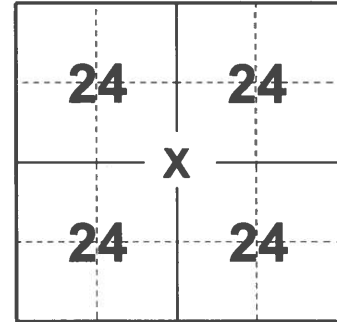
ELEVATION- - - - DATUM - - - -

FIELD WORK DATE: 01/21/2021

BASIS FOR MONUMENT LOCATION

1977 - PLS 1191 RESEARCHED COUNTY SURVEY RECORDS. FOUND SURVEY MADE BY Z. WISE, OCT. 27, 1874, RECORDED IN VOL. 2, PG. 109. SET C1/4 CORNER BY SINGLE PROPORTIONATE MEASURE HALF THE DISTANCE AND ON LINE BETWEEN N1/4 CORNER AND S1/4 CORNER, WHICH CORRELATES WITH ABOVE SURVEY NOTES AND BEST FITS OCCUPATION IN AREA. FOUND NO EVIDENCE OF BEARING TREES OR MONUMENTATION AT CORNER. CORNER COMPUTED BY E.D.M. TRAVERSE. NOTE: PROPORTION DERIVED FROM MEASUREMENT ON NORTH LINE OF THE NW1/4 OF SECTION 24 AND ABOVE SURVEY NOTES.

2021 - PLS 2675 FOUND 2-3/8" O.D. IRON PIPE FLUSH WITH THE GROUND SURFACE AND DID NOT RECOVER ANY EXISTING TIES OR WITNESSES. ACCEPTED THE 2-3/8" O.D. IRON PIPE AS THE CORNER LOCATION. SET 4 NEW TIES.



LOCATION
(INDICATE CORNER BY "X")

SEAL:

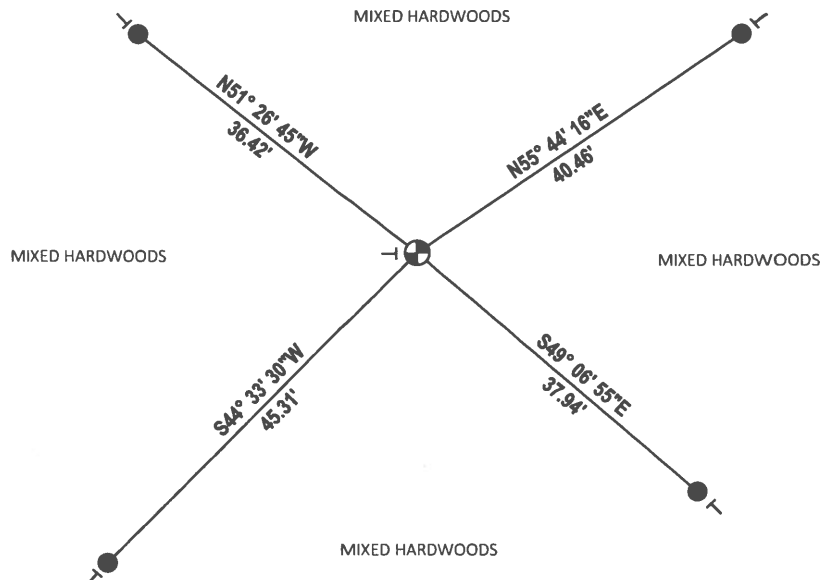
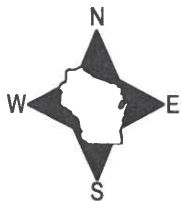


DATA SHOWN HERE ON THIS TIE SHEET IS CORRECT AND COMPLETE TO THE BEST OF MY KNOWLEDGE AND BELIEF.

PROFESSIONAL LAND SURVEYOR

DATE 2/23/2021

- TIE SKETCH



- SET 3/4" x 18" IRON REBAR, 1.50#/FT
- ⊕ FOUND 2-3/8" O.D. IRON PIPE
- ┊ VINYL "T" POST