

## PUBLIC LAND SURVEY MONUMENT RECORD

TYPE OF MONUMENT: HARRISON (BROKEN-TOP)  
ADAMS COUNTY COORDINATES, NAD 83 (2007)

N. 175317.212

E. 504636.350

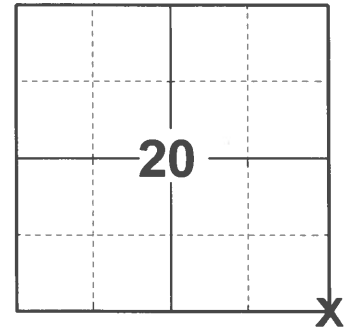
ELEVATION- \_\_\_\_\_ DATUM \_\_\_\_\_

FIELD WORK DATE: 02/16/2021

### BASIS FOR MONUMENT LOCATION

1979 - PLS 878 EXCAVATED WITH BACKHOE. FOUND NOTHING. STONES WERE FOUND AT THE NE, W1/4, SE, AND S1/4 CORNERS OF SECTION 21. STRAIGHT LINES WERE RUN THROUGH THESE POINTS TO INTERSECT AT THIS CORNER. NO RECORD OF ANY RESURVEYS (POST, NOT STONE AT W1/4 CORNER)

2021 - PLS 2675 FOUND MAGNAIL IN THE ROAD SURFACE, REMOVED, AND FOUND HARRISON (BROKEN-TOP) 12"± BELOW THE ROAD SURFACE AND 1 WITNESS. THE MONUMENT AGREES WITH THE WITNESS. ACCEPTED THE HARRISON (BROKEN-TOP) AS THE CORNER LOCATION. SET 4 NEW TIES AND MEASURED TO THE EXISTING WITNESS.



LOCATION

(INDICATE CORNER BY "X")

SEAL:



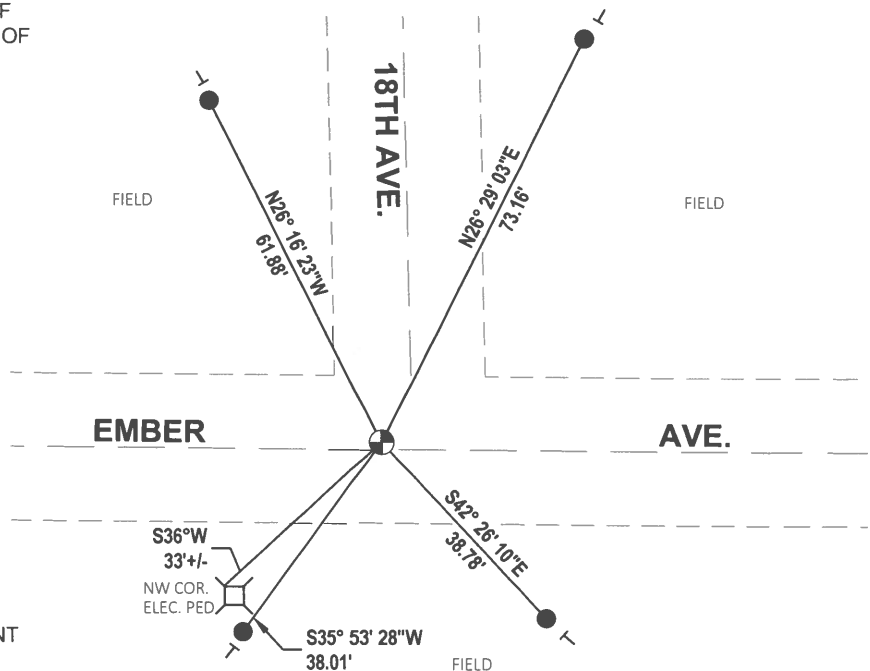
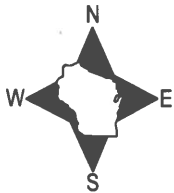
DATA SHOWN HERE ON THIS TIE SHEET IS CORRECT AND COMPLETE TO THE BEST OF MY KNOWLEDGE AND BELIEF.

PROFESSIONAL LAND SURVEYOR

DATE 3/3/2021

### TIE SKETCH

NOTE: THE CORNER LANDS 1.5'± NORTH OF EMBER AVE. CENTERLINE AND 4.5'± WEST OF 18TH AVE. CENTERLINE.

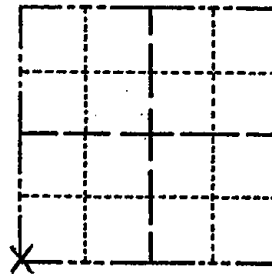


- SET 3/4" x 18" IRON REBAR, 1.50#/FT
- ⊕ FOUND HARRISON (BROKEN-TOP) MONUMENT
- ⊖ VINYL "T" POST

# Government Land Corner Certificate

ADAMS County  
 TYPE OF MONUMENT: STANDARD HARRISON  
 STATE PLANE COORDINATES: N \_\_\_\_\_  
 E \_\_\_\_\_  
 ELEVATION — M.S.L. DATUM: \_\_\_\_\_  
 THETA ANGLE: \_\_\_\_\_  
 FIELD BOOK: 77 PAGE 6  
 DRAWN BY: PAUL KIEDROWSKI

CORNER NO. 85  
 SECTION 21  
 TOWN 16N  
 RANGE 5E



LOCATION  
 (Indicated by 'X')

## BASIS FOR MONUMENT LOCATION

Show info such as: History of corner, with reference to Vol. and pg., dates, surveyor; exact description of monument replaced; if location computed, by taped or EDM traverse; landowner remarks, etc. (Use reverse side if necessary)

Excavated with backhoe. Found Nothing. Xh  
 Stones were found at the NE, W $\frac{1}{4}$ , SE, and S $\frac{1}{4}$   
 corners of section 21. Straight lines were run  
 through these points to intersect at this corner.  
 No record of any resurveys.  
 (Post, not stone at W $\frac{1}{4}$  corner)

ALL OK 4/15/85 D.K.

OVER:

SEAL:



DATA SHOWN HERE ON  
 CERTIFIED CORRECT:

6/13/79 AB Kiedrowski  
 Registered Land Surveyor

DATE: \_\_\_\_\_

## TIE SKETCH

Show at least four ties, also fence lines, roads, topo, size and type of witness trees and if off road - best way to arrive at corner.

