

## PUBLIC LAND SURVEY MONUMENT RECORD

TYPE OF MONUMENT: HARRISON (BROKEN-TOP)  
 ADAMS COUNTY COORDINATES, NAD 83 (2007)

N. 175329.748

E. 507291.189

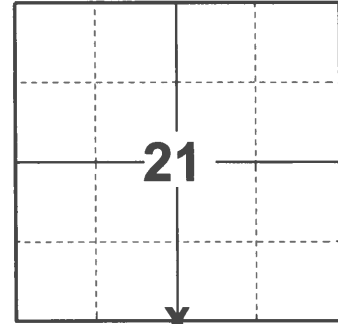
ELEVATION- - - - - DATUM - - - - -

FIELD WORK DATE: 02/03/2021

### BASIS FOR MONUMENT LOCATION

1977 - PLS 878 ABK EXCAVATED WITH BACKHOE OPPOSITE FENCE TO NORTH AND FOUND 10"X2"X10" HIGH RED STONE. LOWERED SAME AND SET HARRISON MONUMENT.

2021 - PLS 2675 FOUND HARRISON (BROKEN-TOP) MONUMENT 18" BELOW THE ROAD SURFACE AND DID NOT RECOVER ANY EXISTING TIES OR WITNESSES. ACCEPTED THE HARRISON (BROKEN-TOP) AS THE CORNER LOCATION. SET 4 NEW TIES.



LOCATION

(INDICATE CORNER BY "X")

SEAL:



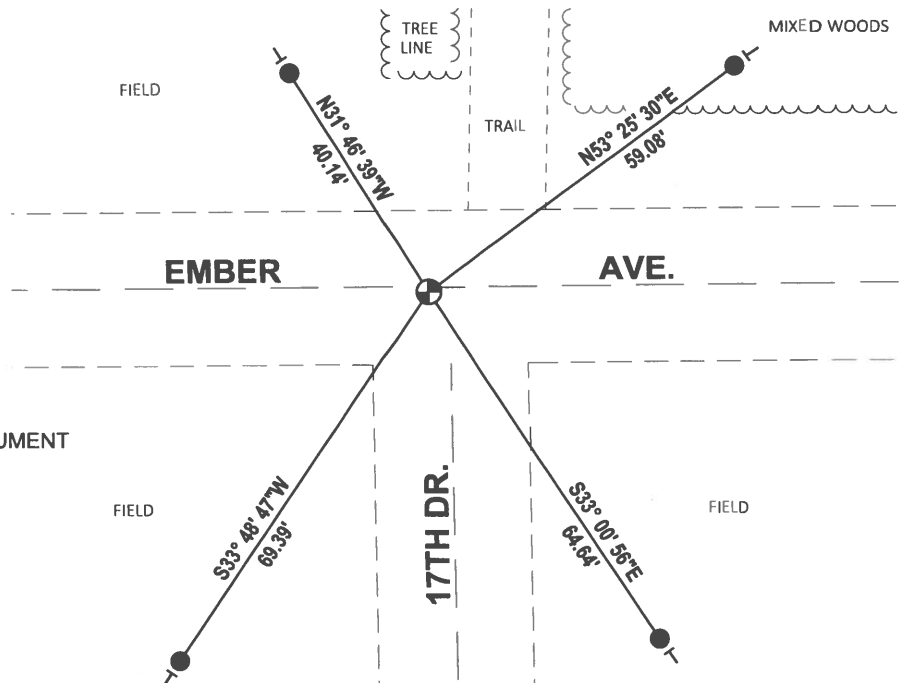
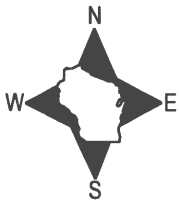
DATA SHOWN HERE ON THIS TIE SHEET IS CORRECT AND COMPLETE TO THE BEST OF MY KNOWLEDGE AND BELIEF.

PROFESSIONAL LAND SURVEYOR

DATE 2/23/2021

### TIE SKETCH

NOTE: THE CORNER LANDS 2± SOUTH OF CENTERLINE OF EMBER AVE.

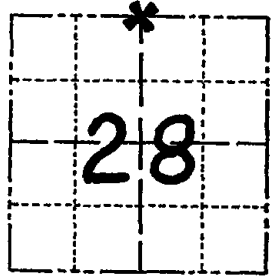


- SET 3/4" x 18" IRON REBAR, 1.50#/FT
- ⊕ FOUND HARRISON (BROKEN-TOP) MONUMENT
- ┆ VINYL "T" POST

# Government Land Corner Certificate

ADAMS County  
 TYPE OF MONUMENT: HARRISON STD.  
 STATE PLANE COORDINATES: N \_\_\_\_\_  
 E \_\_\_\_\_  
 ELEVATION — M.S.L. DATUM: \_\_\_\_\_  
 THETA ANGLE: \_\_\_\_\_ (101) \_\_\_\_\_ (116)  
 FIELD BOOK: 54 PAGE 37  
 DRAWN BY: SCOTT SORENSEN

CORNER NO. 86  
 SECTION 28  
 TOWN 16  
 RANGE 5



LOCATION  
(Indicated by 'X')

## BASIS FOR MONUMENT LOCATION

Show info such as: History of corner, with reference to Vol. and pg., dates, surveyor; exact description of monument replaced; if location computed, by taped or EDM traverse; landowner remarks, etc. (Use reverse side if necessary)

ABK excavated with backhoe opposite fence to north and found 10" X 2" X 10" high red sandstone. lowered same and set harrison monument.

SEAL:



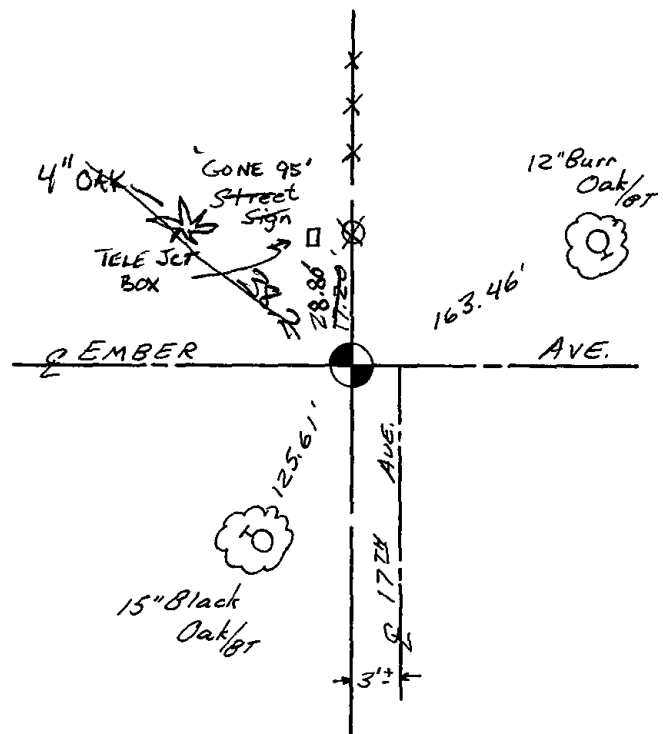
DATA SHOWN HERE ON CERTIFIED CORRECT:

Anthony B. Kiedrowski  
Registered Land Surveyor

DATE: 12/5/77

## TIE SKETCH

Show at least four ties, also fence lines, roads, topo, size and type of witness trees' and if off road - best way to arrive at corner.



## MAINTENANCE RECORD

Date	Init.	Remarks
10/3/80	KV-SK	MON. BEEPS, TIES OK
4/15/85	D.K.	ALL OK
2-8-90	KZ-SS	ALL OK
2-7-95	JG	1-GONE, 1-NEW
2-10-00	T.W.SS	ALL OK
3-3-05	SS-JS	ALL OK, 1-NEW
7-7-10	SS	3 TIES REMAIN