

## PUBLIC LAND SURVEY MONUMENT RECORD

TYPE OF MONUMENT: HARRISON (BROKEN-TOP)  
ADAMS COUNTY COORDINATES, NAD 83 (2007)

N. 175342.147

E. 509939.798

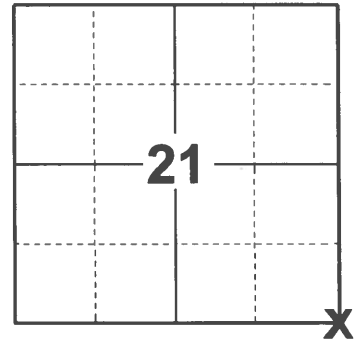
ELEVATION- - - - DATUM - - - -

FIELD WORK DATE: 02/03/2021

### BASIS FOR MONUMENT LOCATION

1977 - PLS 1103 RAN EDM/T2 TRAVERSE AROUND SECTION 27 AND PARTS OF ADJOINING SECTIONS TO DETERMINE SEARCH AREA FOR INVESTIGATION. EXCAVATION WITH BACKHOE YIELDED 3"X5"X10" WHITE SANDSTONE IN UPRIGHT POSITION. REMONUMENTED LOCATION OF STONE WITH HARRISON MONUMENT ON NOVEMBER 14, 1977.

2021 - PLS 2675 FOUND HARRISON (BROKEN-TOP) MONUMENT 24"± BELOW THE ROAD SURFACE AND DID NOT RECOVER ANY EXISTING TIES OR WITNESSES. ACCEPTED THE HARRISON AS THE CORNER LOCATION. SET 2 NEW TIES AND MEASURED TO 2 FOUND PROPERTY IRONS.



LOCATION  
(INDICATE CORNER BY "X")

SEAL:



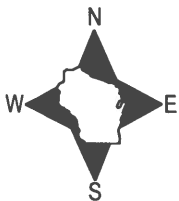
DATA SHOWN HERE ON THIS TIE SHEET IS CORRECT AND COMPLETE TO THE BEST OF MY KNOWLEDGE AND BELIEF.

PROFESSIONAL LAND SURVEYOR

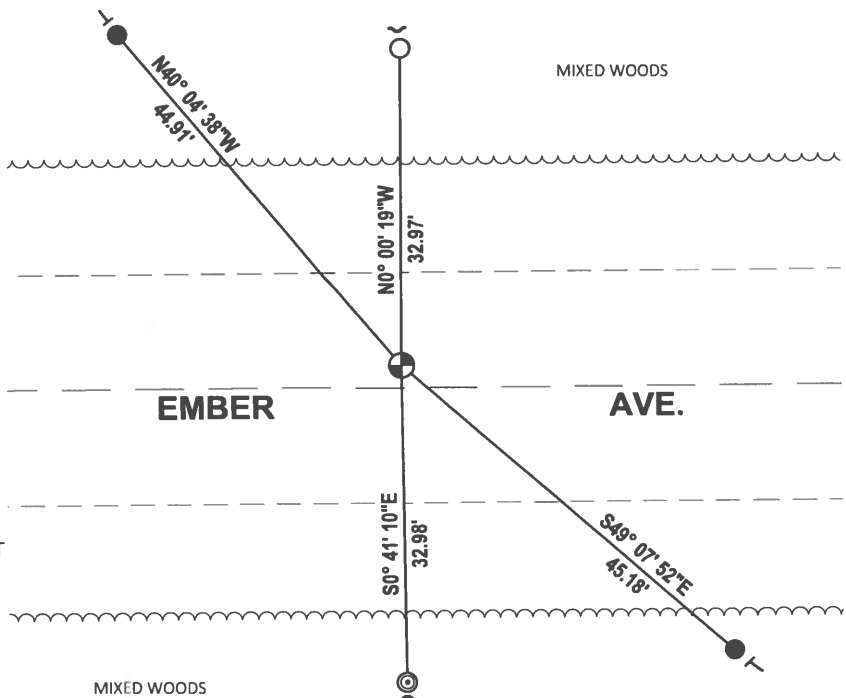
DATE 2/23/2021

### - TIE SKETCH

NOTE: THE CORNER LANDS 3'± NORTH OF CENTERLINE OF EMBER AVE.



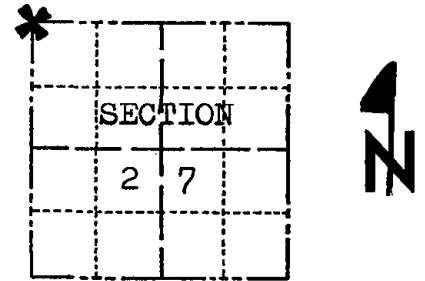
- SET 3/4" x 18" IRON REBAR, 1.50#/FT
- FOUND 3/4" IRON ROD
- ◎ FOUND 2-3/8" O.D. IRON PIPE
- ⊕ FOUND HARRISON (BROKEN-TOP) MONUMENT
- ↘ STEEL FENCE POST
- ┌ VINYL "T" POST



# Government Land Corner Certificate

Adams County  
 TYPE OF MONUMENT: HARRISON STO.  
 STATE PLANE COORDINATES: N \_\_\_\_\_  
 E \_\_\_\_\_  
 ELEVATION — M.S.L. DATUM: \_\_\_\_\_  
 THETA ANGLE: \_\_\_\_\_  
 FIELD BOOK: 57 PAGE 45  
 DRAWN BY: SCOTT SORENSEN

CORNER NO. 87  
 SECTION 27  
 TOWN 16  
 RANGE 5



LOCATION  
(Indicated by 'X')

## BASIS FOR MONUMENT LOCATION

Show info such as: History of corner, with reference to Vol. and pg., dates, surveyor; exact description of monument replaced; if location computed, by taped or EDM traverse; landowner remarks, etc. (Use reverse side if necessary)  
 Ran EDM/T2 traverse around Section 27 and parts of adjoining sections to determine search area for investigation.

Excavation with backhoe yielded 3"x5"x10" white sandstone in upright position.

Remonumented location of stone with Harrison monument on November 14, 1977.

Lowered Stone

SEAL:



DATA SHOWN HERE ON  
CERTIFIED CORRECT:

Dale C. Hagen  
Registered Land Surveyor

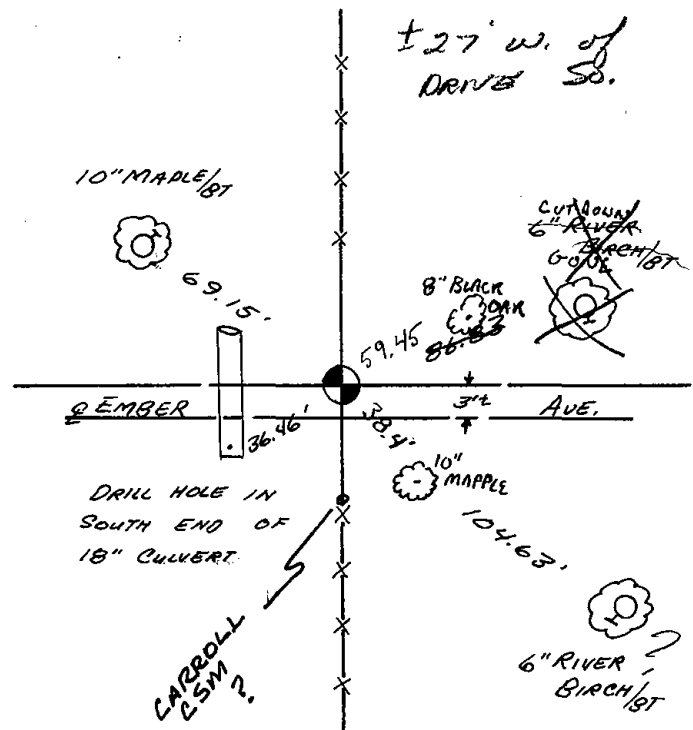
DATE: December 6, 1977

## TIE SKETCH

Show at least four ties, also fence lines, roads, topo, size and type of witness trees and if off road - best way to arrive at corner.

### NOTE

Ties in trees to nail in disc.



## MAINTENANCE RECORD

Date	Init.	Remarks
10/3/80	KV-SK	TOP BROKEN OFF (MONY TIES OK)
4/15/85	D.K.	TOP BROKEN TIES OK
2-8-90	K2-SS	TOP BROKEN TIES OK (SEE SURVEY SOUTH)
2-7-95	JG	OK
2-10-00	TH-SS	2 NEW - 1 GONE
3-3-05	SS-SS	ALL OK
7-7-10	DR-SS	OK

REVISED 1977