

23
SECTION

16
TOWN

05
RANGE

ADAMS COUNTY

COUNTY CORNER NO: 90

ROMPORTOL ID: 41605230020

PUBLIC LAND SURVEY MONUMENT RECORD

TYPE OF MONUMENT: 2-3/8" O.D. IRON PIPE WITH ALUMINUM CAP
ADAMS COUNTY COORDINATES, NAD 83 (2007)

N. 175278.589

E. 517897.777

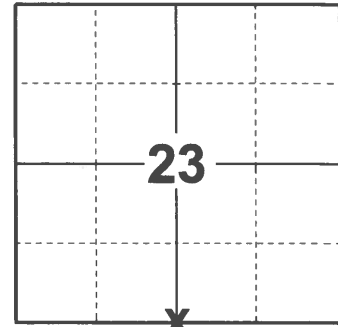
ELEVATION- _____ DATUM _____

FIELD WORK DATE: 01/21/2021

BASIS FOR MONUMENT LOCATION

1981 - PLS 1444 THIS CORNER WAS SET EQUIDISTANT AND ON A STRAIGHT LINE BETWEEN SECTION CORNERS. NO EVIDENCE OF THE ORIGINAL CORNER OR ANY RESURVEY CORNER WAS FOUND.

2021 - PLS 2675 FOUND 2-3/8" O.D. IRON PIPE WITH ALUMINUM CAP UP 18"± AND ALL 4 TIES. THE MONUMENT AGREES WITH ALL 4 TIES. ACCEPTED THE 2-3/8" O.D. IRON PIPE WITH ALUMINUM CAP AS THE CORNER LOCATION. MEASURED TO ALL FOUND IRON PIPES.



LOCATION

(INDICATE CORNER BY "X")

SEAL:

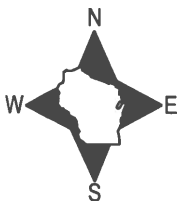


DATA SHOWN HERE ON THIS TIE SHEET IS CORRECT AND COMPLETE TO THE BEST OF MY KNOWLEDGE AND BELIEF.

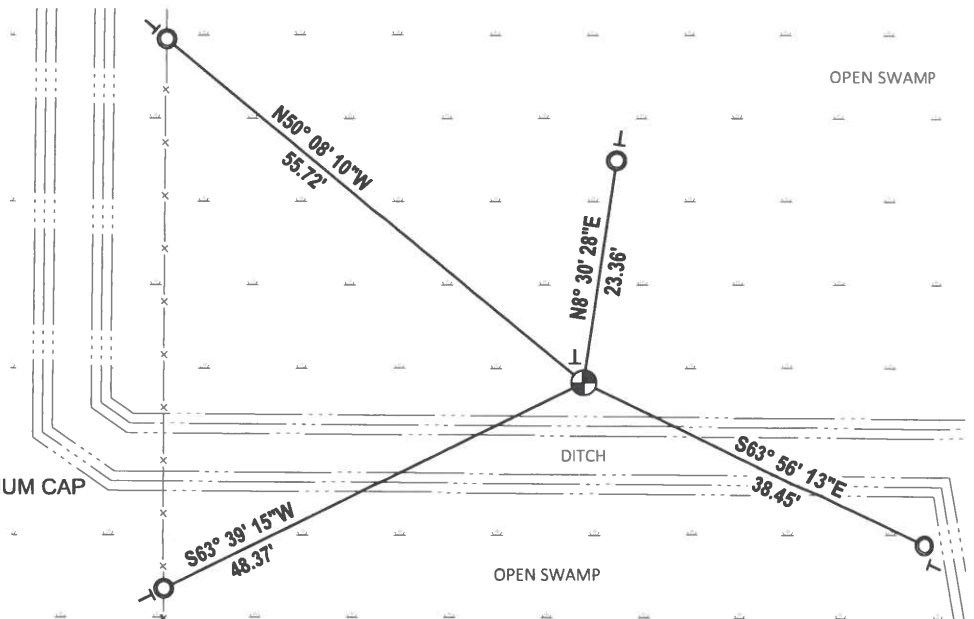
PROFESSIONAL LAND SURVEYOR

DATE 3/3/2021

- TIE SKETCH



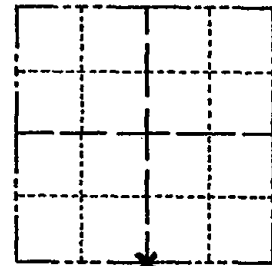
- SET 3/4" x 18" IRON REBAR, 1.50#/FT
- FOUND 1-1/4" O.D. IRON PIPE
- ⊕ FOUND 2-3/8" O.D. IRON PIPE WITH ALUMINUM CAP
- VINYL "T" POST



Government Land Corner Certificate

ADAMS County
 TYPE OF MONUMENT: 2" x 6' IRON PIPE/ALUM. CAP
 STATE PLANE COORDINATES: N 43° 50' 50.8"
 HANO HELD GPS E 089° 52' 03.8"
 ELEVATION — M.S.L. DATUM: _____
 THETA ANGLE: _____
 FIELD BOOK: 76 PAGE 48
 DRAWN BY: LANCE J. HABECK

CORNER NO. 90
 SECTION 23
 TOWN 16
 RANGE 5



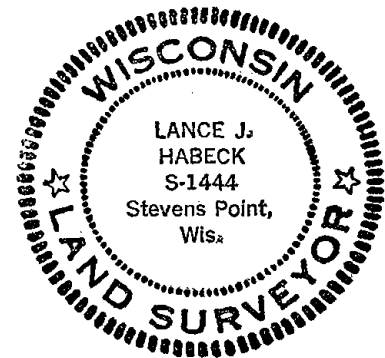
LOCATION
(Indicated by 'X')

BASIS FOR MONUMENT LOCATION

Show info such as: History of corner, with reference to Vol. and pg., dates, surveyor; exact description of monument replaced; if location computed, by taped or EDM traverse; landowner remarks, etc. (Use reverse side if necessary)

This corner was set equidistant and on a straight line between section corners. No evidence of the original corner or any resurvey corner was found.

SEAL:



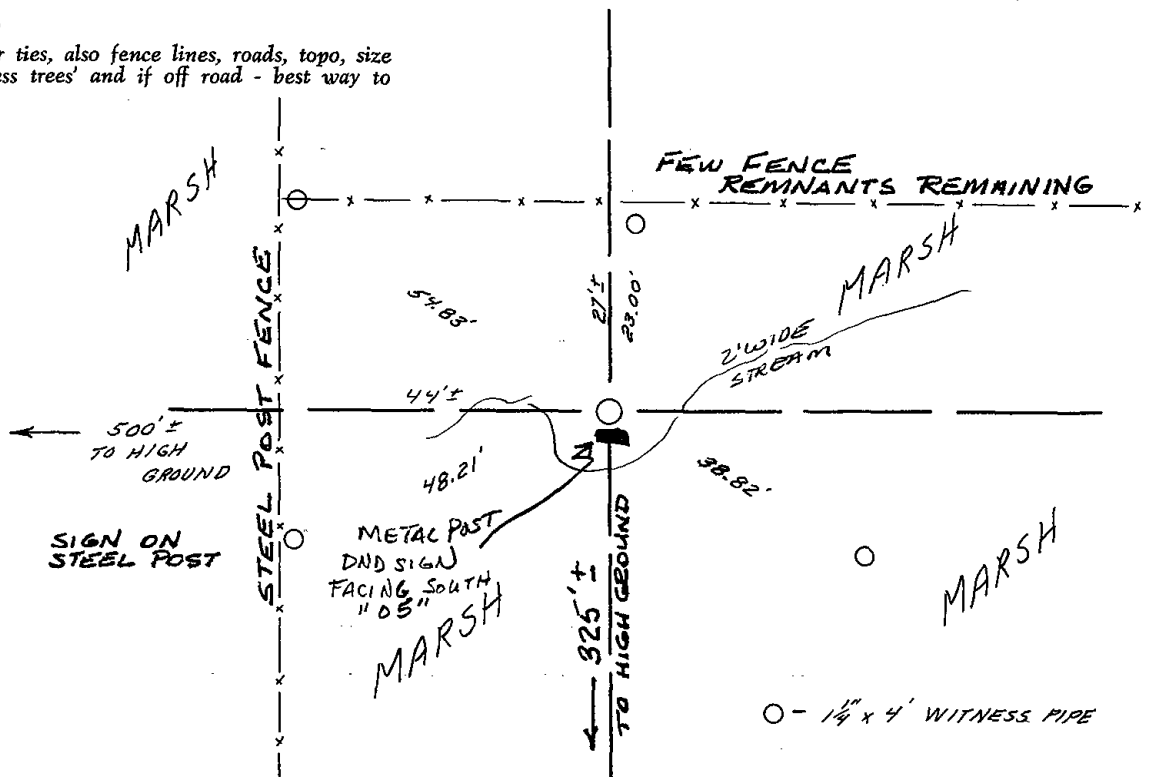
DATA SHOWN HERE ON
CERTIFIED CORRECT:

Lance J. Habeck
Registered Land Surveyor

DATE: 1/6/81

TIE SKETCH

Show at least four ties, also fence lines, roads, topo, size and type of witness trees' and if off road - best way to arrive at corner.



○ - 1/4" x 4' WITNESS PIPE

