

PUBLIC LAND SURVEY MONUMENT RECORD

TYPE OF MONUMENT: HARRISON
ADAMS COUNTY COORDINATES, NAD 83 (2007)

N. 175272.198

E. 520531.554

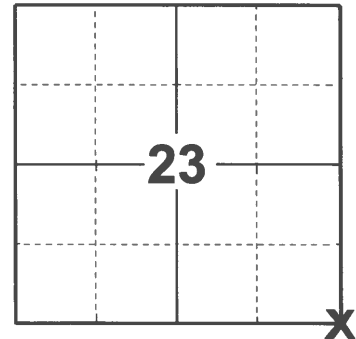
ELEVATION- - - - DATUM - - - -

FIELD WORK DATE: 01/21/2021

BASIS FOR MONUMENT LOCATION

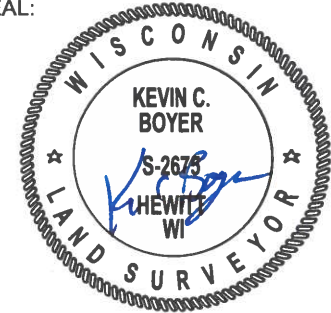
1977 - PLS 1191 RESEARCHED COUNTY SURVEY NOTES. FOUND SURVEY MADE BY Z. WISE, OCT. 27, 1874; RECORDED IN VOL. 2, PG. 109. FOUND NO EVIDENCE OF BEARING TREES OR MONUMENTATION IN SEARCH AREA. SET SOUTHWEST CORNER BY SINGLE PROPORTIONATE MEASURE SOUTH FROM W1/4 CORNER AND WEST FROM S1/4 CORNER. CORNER LOCATION COMPUTED FROM TAPED TRAVERSE. NOTE: PROPORTION DERIVED FROM MEASUREMENT ON NORTH LINE OF THE NW1/4 OF SECTION 24 AND ABOVE SURVEY NOTES.

2021 - PLS 2675 FOUND HARRISON MONUMENT FLUSH WITH THE MARSH SURFACE AND DID NOT RECOVER ANY EXISTING TIES OR WITNESSES. ACCEPTED THE HARRISON AS THE CORNER LOCATION. SET 4 NEW TIES.



LOCATION
(INDICATE CORNER BY "X")

SEAL:

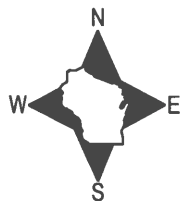


DATA SHOWN HERE ON THIS TIE SHEET IS CORRECT AND COMPLETE TO THE BEST OF MY KNOWLEDGE AND BELIEF.

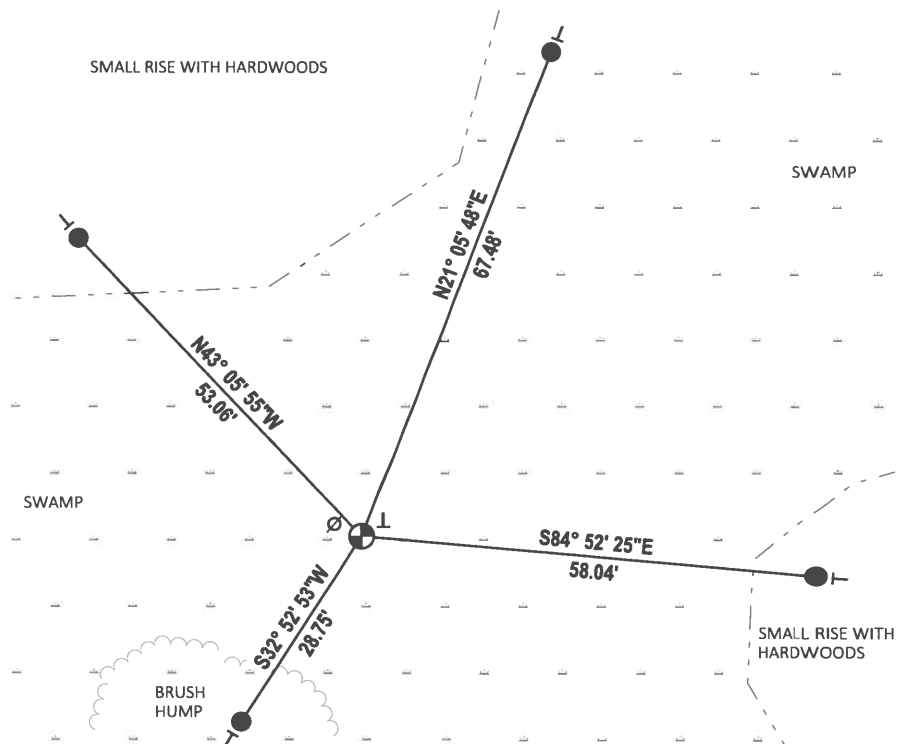
PROFESSIONAL LAND SURVEYOR

DATE 3/3/2021

TIE SKETCH



- SET 3/4" x 18" IRON REBAR, 1.50#/FT
- ⊕ FOUND HARRISON MONUMENT
- ┊ VINYL "T" POST
- ∅ 10" UTILITY POLE



Government Land Corner Certificate

ADAMS County

TYPE OF MONUMENT: STANDARD HARRISON

STATE PLANE COORDINATES: N 43°50'50.7"
 HAND HELD GPS E 89°51'28.0"

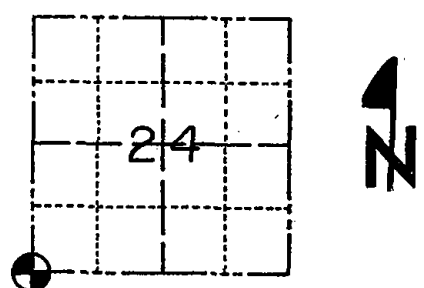
ELEVATION — M.S.L. DATUM: _____

THETA ANGLE: _____

FIELD BOOK: 7701 PAGE 17

DRAWN BY: D. DONNELLY

CORNER NO. 91
 SECTION 24
 TOWN 16
 RANGE 5



LOCATION
(Indicated by 'X')

SEAL:



BASIS FOR MONUMENT LOCATION

Show info such as: History of corner, with reference to Vol. and pg., dates, surveyor; exact description of monument replaced; if location computed, by taped or EDM traverse; landowner remarks, etc. (Use reverse side if necessary)

Researched County survey notes. Found survey made by Z. Wise, Oct. 27, 1874, recorded in Vol. 2, Pg. 109. Found no evidence of bearing trees or monumentation in search area. Set S.W. cor. by single proportionate measure south from W $\frac{1}{4}$ cor. and west from S $\frac{1}{4}$ cor. Corner location computed from taped traverse.

Note:

Proportion derived from measurement on north line of the NW $\frac{1}{4}$ of section 24 and above survey notes.

DATA SHOWN HERE ON
CERTIFIED CORRECT:

Allen D. Rohde
Registered Land Surveyor

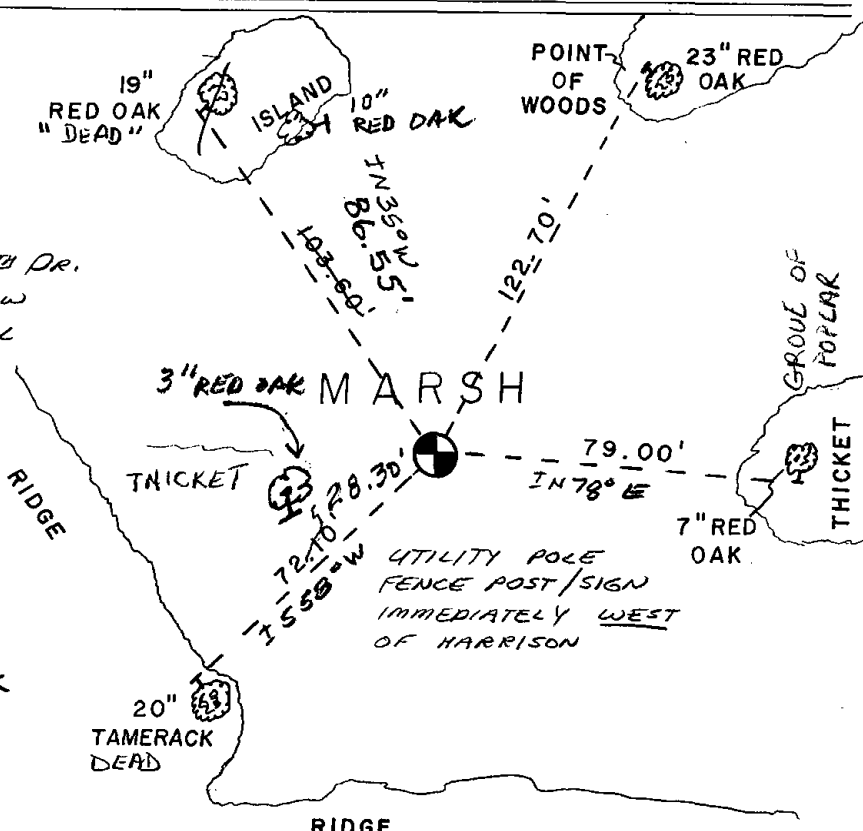
DATE: 12-12-77

THE SKETCH

Show at least four ties, also fence lines, roads, topo, size and type of witness trees' and if off road - best way to arrive at corner.

NOTE: MEASURED TO P.K. NAIL & SHINER IN BEARING TREES WITH BLAZES

ENTER WALKING TRAIL OFF 14TH DR. 600'± SOUTH OF N $\frac{1}{4}$ COR. FOLLOW MAIN TRAIL 15 MINUTES - TRAIL WILL FADE OUT AND CORNER WILL BE STRAIGHT AHEAD



MAINTENANCE RECORD

Date	Init.	Remarks
10/13/80	KU-SK	COR OK
11-5-85	S.S.	ALL O.K.
1-9-90	SS	ALL OK
12-21-05	JG	2-GONE, 2-NEW, MON OK
12-09-05	GR	OK