

## PUBLIC LAND SURVEY MONUMENT RECORD

TYPE OF MONUMENT: HARRISON  
ADAMS COUNTY COORDINATES, NAD 83 (2007)

N. 172641.378

E. 515263.815

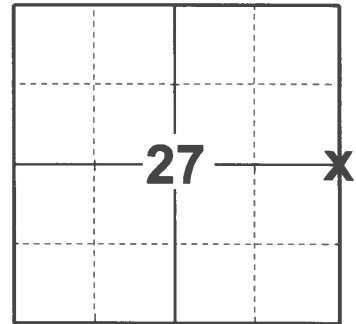
ELEVATION- - - - DATUM - - - -

FIELD WORK DATE: 01/20/2021

### BASIS FOR MONUMENT LOCATION

1977 - PLS 1103 RAN EDM/T2 TRAVERSE AROUND SECTION 27 AND PARTS OF ADJOINING SECTIONS TO DETERMINE SEARCH AREA FOR INVESTIGATION. COULD FIND NO EVIDENCE OF THE ORIGINAL CORNER, SUBSEQUENT REMONUMENTATION OR BEARING TREES. RELOCATED CORNER AT INTERSECTION OF FENCELINES, AS THIS IS THE BEST EVIDENCE OF THE LOCATION OF THE CORNER WITHIN THE SEARCH AREA. SET HARRISON MONUMENT ON 11-14-1977.

2021 - PLS 2675 FOUND HARRISON MONUMENT FLUSH WITH THE GROUND SURFACE AND 3 WITNESS TREES. THE MONUMENT AGREES WITH ALL 3 WITNESS TREES. ACCEPTED THE HARRISON AS THE CORNER LOCATION. SET 4 NEW TIES AND MEASURED TO THE EXISTING WITNESS TREES.



**LOCATION**  
(INDICATE CORNER BY "X")

SEAL:

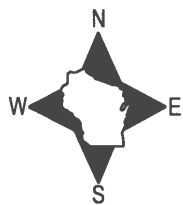


DATA SHOWN HERE ON THIS TIE SHEET IS CORRECT AND COMPLETE TO THE BEST OF MY KNOWLEDGE AND BELIEF.

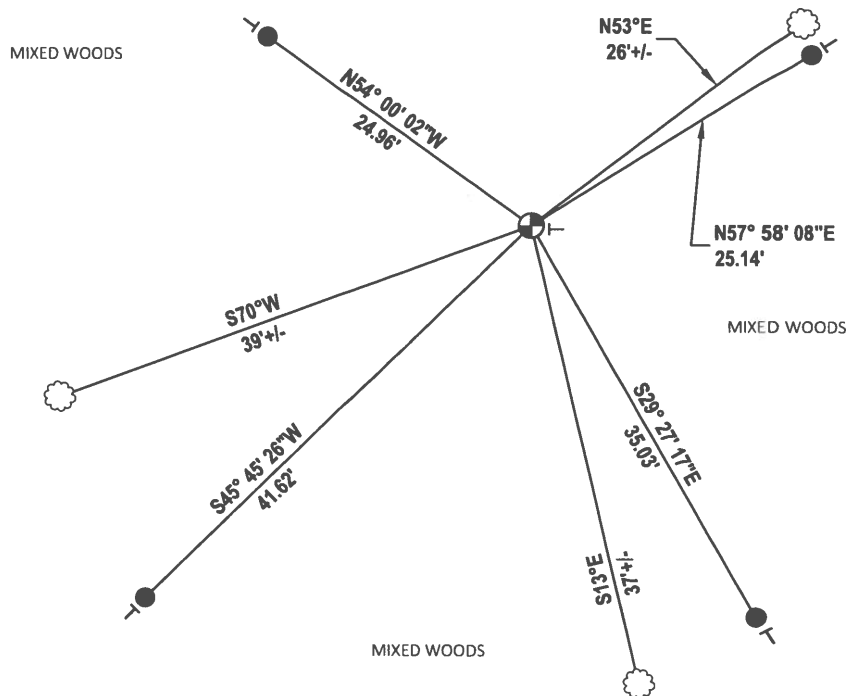
PROFESSIONAL LAND SURVEYOR

DATE 3/3/2021

### - TIE SKETCH



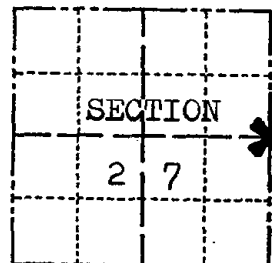
- SET 3/4" x 18" IRON REBAR, 1.50#/FT
- ⊕ FOUND HARRISON MONUMENT
- ┊ VINYL "T" POST
- ☼ WITNESS TREE



# Government Land Corner Certificate

ADAMS County  
 TYPE OF MONUMENT: HARRISON STD.  
 STATE PLANE COORDINATES: N \_\_\_\_\_  
 E \_\_\_\_\_  
 ELEVATION — M.S.L. DATUM: \_\_\_\_\_  
 THETA ANGLE: \_\_\_\_\_  
 FIELD BOOK: 57 PAGE 43  
 DRAWN BY: SCOTT SORENSEN

CORNER NO. 98  
 SECTION 27  
 TOWN 16  
 RANGE 5



LOCATION  
(Indicated by 'X')

## BASIS FOR MONUMENT LOCATION

Show info such as: History of corner, with reference to Vol. and pg., dates, surveyor; exact description of monument replaced; if location computed, by taped or EDM traverse; landowner remarks, etc. (Use reverse side if necessary)

Ran EDM/T2 traverse around Section 27 and parts of adjoining sections to determine search area for investigation.

Could find no evidence of the original corner, subsequent remonumentation or bearing trees.

Relocated corner at intersection of fence lines, as this is the best evidence of the location of the corner within the search area.

Set Harrison Monument on 11-14-77.

SEAL:



DATA SHOWN HERE ON  
CERTIFIED CORRECT:

*Dale C. Hagen*  
Registered Land Surveyor

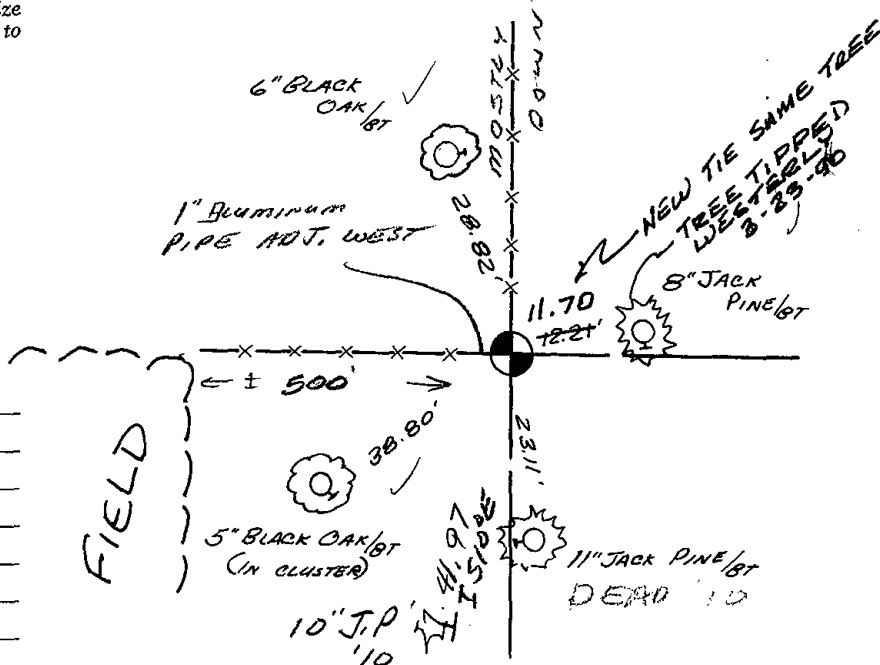
DATE: 12-6-1977

## TIE SKETCH

Show at least four ties, also fence lines, roads, topo, size and type of witness trees' and if off road - best way to arrive at corner.

### NOTE

Ties in trees to nail in disc.



## MAINTENANCE RECORD

Date	Init.	Remarks
10/13/80	KV-SK	COR OK
3-23-90	KZ-SS	ALL OK
OCT. '00	SJS	OK
3-3-05	JS-SS	OK
11-9-10	SS	1 NEW TIE