

## PUBLIC LAND SURVEY MONUMENT RECORD

TYPE OF MONUMENT: 1-1/4" IRON ROD

ADAMS COUNTY COORDINATES, NAD 83 (2007)

N. 170027.861

E. 504909.671

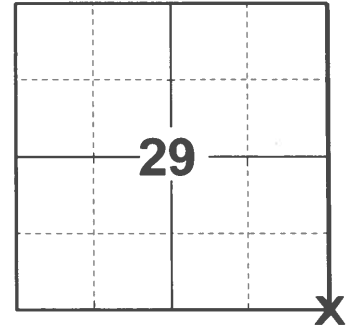
ELEVATION-      DATUM     

FIELD WORK DATE: 02/18/2021

### BASIS FOR MONUMENT LOCATION

1981 - PLS 1644 THIS MEANDER CORNER WAS SET ON THE SOUTH LINE OF SECTION 28 BY EXTENDING A STRAIGHT LINE FROM THE S $\frac{1}{4}$  CORNER THROUGH A 1" IRON PIPE SET BY PERRY-CARRINGTON ENGINEERING, TO THE WATERS EDGE. THE SOUTHWEST CORNER OF SECTION 28 WAS ESTABLISHED BY FURTHER EXTENDING THIS LINE A DISTANCE OF 2643.30' FROM THE SOUTH QUARTER CORNER. THE DISTANCE GIVEN IN THE ORIGINAL NOTES FOR THIS LINE IS 2643.30'. IT WAS HELD BECAUSE STATIONING FOR A ROAD BEARING NORTHWESTERLY (NOW CTH 'Z') FITS THE PRESENT LOCATION OF CTH 'Z' FAIRLY ACCURATELY.

2021 - PLS 2675 FOUND 1-1/4" IRON ROD BY THE WATERS EDGE AND A IRON ROD. THE FOUND 1-1/4" IRON ROD IS ON A STRAIGHT LINE BETWEEN THE S $\frac{1}{4}$  AND FOUND IRON ROD. ACCEPTED THE 1-1/4" IRON ROD AS THE MEANDER CORNER. SET 2 NEW TIES, MEASURED TO A FOUND RIGHT-OF-WAY IRON AND THE S $\frac{1}{4}$  OF SECTION 28.



LOCATION

(INDICATE CORNER BY "X")

SEAL:

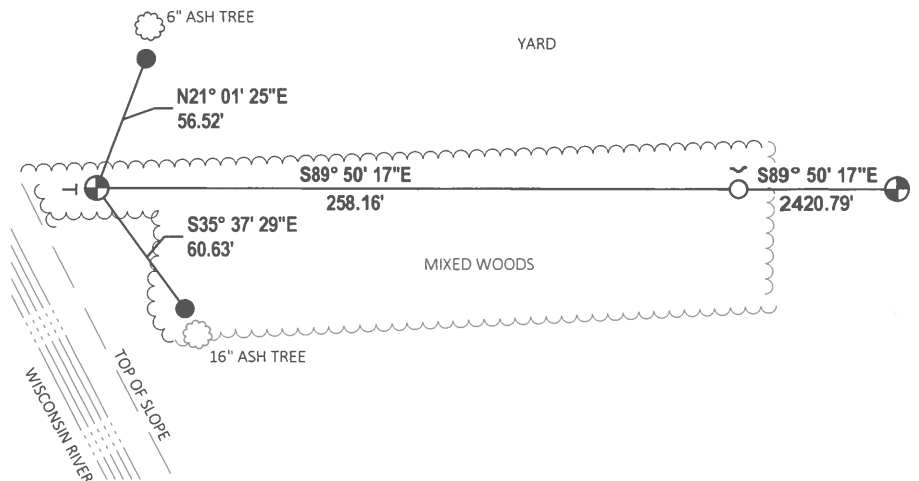
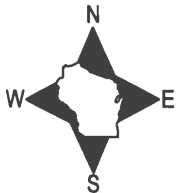


DATA SHOWN HERE ON THIS TIE SHEET IS CORRECT AND COMPLETE TO THE BEST OF MY KNOWLEDGE AND BELIEF.

PROFESSIONAL LAND SURVEYOR

DATE 3/3/2021

### - TIE SKETCH



- SET 3/4" x 18" IRON REBAR, 1.50#/FT
- FOUND 3/4" IRON ROD
- ⊕ FOUND 1-1/4" IRON ROD MONUMENT
- ✓ STEEL FENCE POST
- ⊖ VINYL "T" POST

# Government Land Corner Certificate

ADAMS County

CORNER NO. 105  
 SECTION 28  
 TOWN 16  
 RANGE 5

TYPE OF MONUMENT: 2" x 30" IRON PIPE / ALUM. CAP

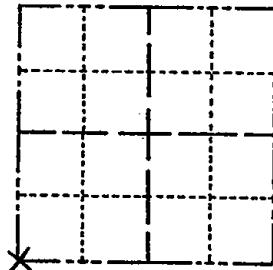
STATE PLANE COORDINATES: N \_\_\_\_\_  
 E \_\_\_\_\_

ELEVATION — M.S.L. DATUM: \_\_\_\_\_

THETA ANGLE: \_\_\_\_\_

FIELD BOOK: 76 PAGE 36

DRAWN BY: LANCE J. HABECK



LOCATION  
(Indicated by 'X')

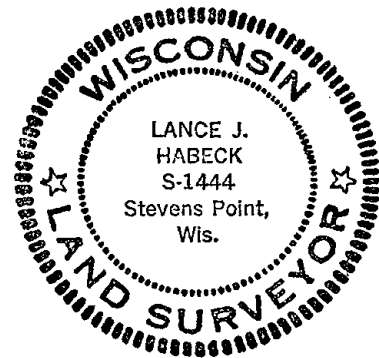
## BASIS FOR MONUMENT LOCATION

Show info such as: History of corner, with reference to Vol. and pg., dates, surveyor; exact description of monument replaced; if location computed, by taped or EDM traverse; landowner remarks, etc. (Use reverse side if necessary)

This meander corner was set on the south line of Section 28 by extending a straight line from the S $\frac{1}{4}$  corner through a 1" iron pipe set by Perry-Carrington Eng, in the waters edge. The southwest corner of Section 28 was established by further extending this line a distance of 2643.30' from the south quarter corner. The distance given in the original notes for this line is 2643.30'. It was held because stationing for a road bearing northwesterly (now CTH "Z") fit the present location of CTH "Z" fairly accurately.

ALL OK 4/15/85 D.K.  
 ALL OK 2-15-90 KZ-GR  
 SEE CSM# 4675 (MSA)

SEAL:



DATA SHOWN HERE ON  
CERTIFIED CORRECT:

*Lance J. Habeck*  
Registered Land Surveyor

DATE: 1/6/81

## TIE SKETCH

Show at least four ties, also fence lines, roads, topo, size and type of witness trees' and if off road - best way to arrive at corner.

