

PUBLIC LAND SURVEY MONUMENT RECORD

TYPE OF MONUMENT: HARRISON
ADAMS COUNTY COORDINATES, NAD 83 (2007)

N. 170007.935

E. 517930.798

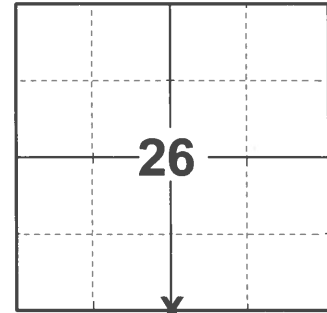
ELEVATION- - - - DATUM - - - -

FIELD WORK DATE: 02/15/2021

BASIS FOR MONUMENT LOCATION

1978 - PLS 878 SET EQUIDISTANT AND ON LINE BETWEEN ADJACENT SECTION CORNERS. NO EVIDENCE OF ANY PREVIOUS MONUMENTATION WAS FOUND.

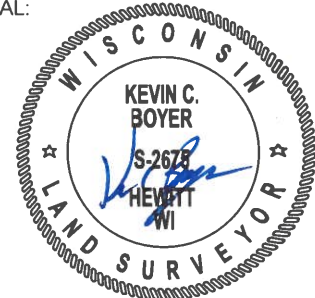
2021 - PLS 2675 FOUND HARRISON FLUSH WITH THE GROUND AND 1 WITNESS. THE MONUMENT AGREES WITH THE WITNESS AND IS ON A STRIGHT LINE AND EQUIDISTANT SPLIT BETWEEN THE SE AND SW CORNERS OF SECTION 26. ACCEPTED THE HARRISON AS THE CORNER LOCATION. SET 4 NEW TIES AND MEASURED TO THE EXISTING WITNESS.



LOCATION

(INDICATE CORNER BY "X")

SEAL:

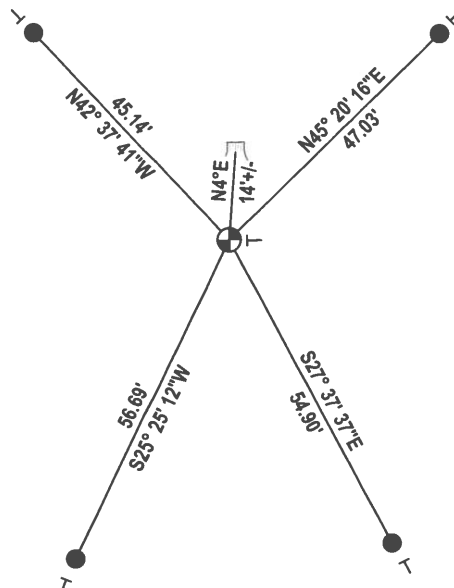


DATA SHOWN HERE ON THIS TIE SHEET IS CORRECT AND COMPLETE TO THE BEST OF MY KNOWLEDGE AND BELIEF.

PROFESSIONAL LAND SURVEYOR

DATE 3/3/2021

TIE SKETCH



- SET 3/4" x 18" IRON REBAR, 1.50#/FT
- ⊕ FOUND HARRISON MONUMENT
- VINYL "T" POST
- ⌋ WITNESS STUMP

How far to E.C.?

Government Land Corner Certificate

ADAMS County

TYPE OF MONUMENT: HARRISON MAC NAIL

STATE PLANE COORDINATES: N _____
E _____

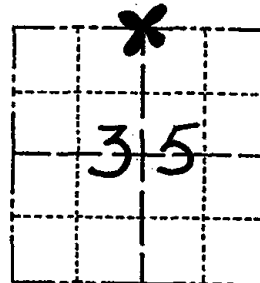
ELEVATION — M.S.L. DATUM: _____

THETA ANGLE: _____

FIELD BOOK: 57 PAGE 71

DRAWN BY: B. MERZ

CORNER NO. 110
SECTION 35
TOWN 16
RANGE 5



LOCATION
(Indicated by 'X')

BASIS FOR MONUMENT LOCATION

Show info such as: History of corner, with reference to Vol. and pg., dates, surveyor; exact description of monument replaced; if location computed, by taped or EDM traverse; landowner remarks, etc. (Use reverse side if necessary)

Set equidistant and on line between adjacent section corners.
No evidence of any previous monumentation was found.

SEAL:

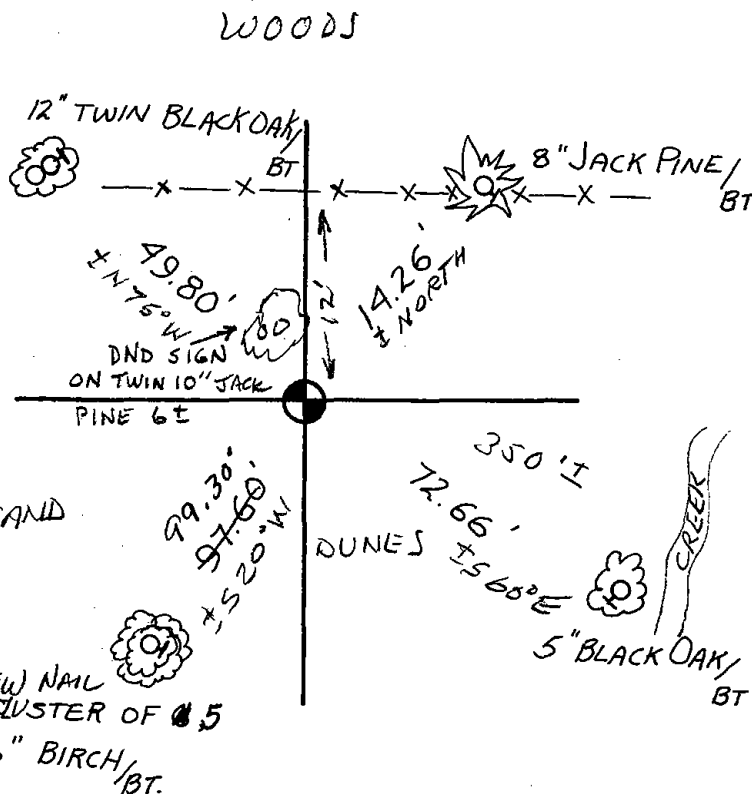
DATA SHOWN HERE ON
CERTIFIED CORRECT:

Andrew B. Kochoowski
Registered Land Surveyor

DATE: 8-1-78

TIE SKETCH

Show at least four ties, also fence lines, roads, topo, size and type of witness trees and if off road - best way to arrive at corner.



MAINTENANCE RECORD

Date	Init.	Remarks
10/13/80	KV-SK	COR. OK
3-23-90	KZ-SS	ALL OK
2-7-95	JG	ALL OK
12-01-00	STS	" "
1-13-05	JG-DA	" "
12-20-10	ES	" "